

OUTDOOR AIR CALCULATION

BASED ON FBC MECHANICAL

UNIT NO.	SPACE USE	OCC.	CFM/OCC.	OCC. CFM	SPACE AREA	CFM/S.F.	AREA CFM	TOTAL CFM
AHU-7	CONFERENCE ROOM 102	12	5	60	312 S.F.	0.06	19	79
	OFFICE 103	1	5	5	155 S.F.	0.06	9	14
	WORKROOM	8	5	40	449 S.F.	0.06	3	43
	TOTAL O/A REQUIRED							136
	O/A PROVIDED							136
AHU-8	OFFICE 104	6	5	30	155 S.F.	0.06	9	39
	OFFICE 105	6	5	10	155 S.F.	0.06	9	19
	OFFICE 106	2	5	10	155 S.F.	0.06	9	19
	TOTAL O/A REQUIRED							77
	O/A PROVIDED							77
AHU-9	WORKROOM	14	5	70	718 S.F.	0.06	43	113
	TOTAL O/A REQUIRED							113
	O/A PROVIDED							113

AIR DISTRIBUTION DEVICE SCHEDULE

	MAKE	MODEL	SIZE	MATERIAL	FRAME TYPE	DAMPER	THROW	FINISH
A	TITUS	TDC-AA	24X24-NECK PER PLAN	ALUMINUM	LAY-IN		4-WAY	WHITE
RG-1	TITUS	3FL	24X24-NECK PER PLAN	ALUMINUM	LAY-IN			WHITE
RG-2	TITUS	3FL	24X48-NECK PER PLAN	ALUMINUM	LAY-IN			WHITE
RG-3	TITUS	3FL	12X12-NECK PER PLAN	ALUMINUM	LAY-IN			WHITE

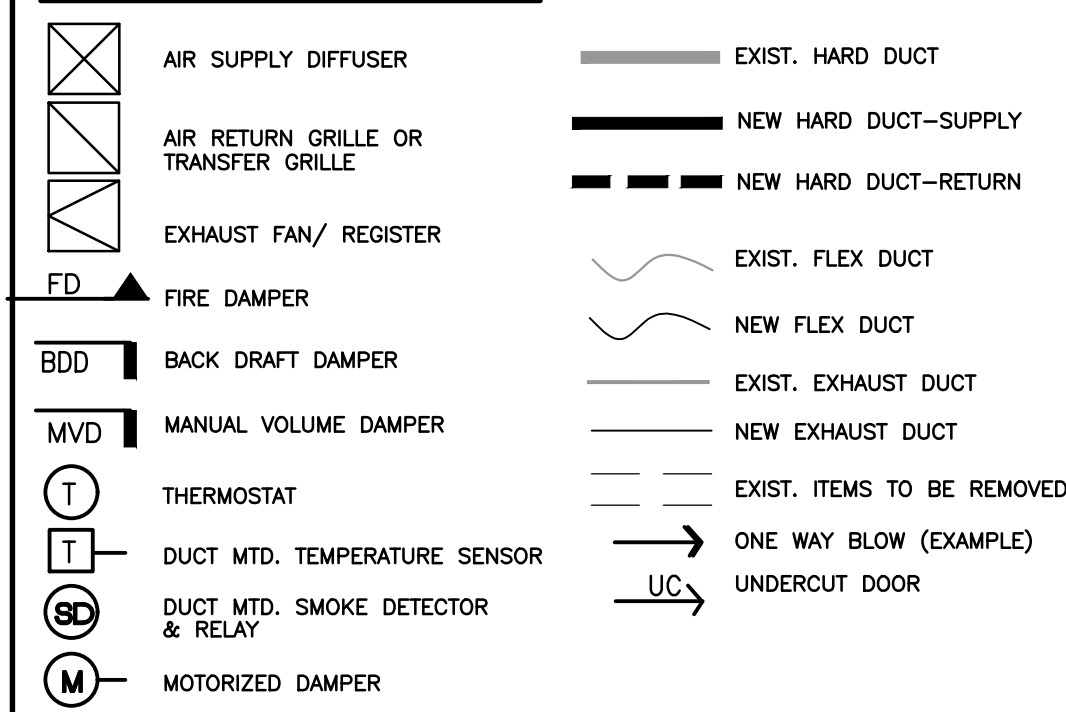
PROVIDE VOLUME DAMPERS FOR ALL BRANCH LINES
 PROVIDE SQUARE TO ROUND ADAPTERS WHERE REQUIRED FOR ROUND DUCT CONNECTION.
 PROVIDE FLEXIBLE DUCT SIZED TO MATCH S/A GRILL NECK UNLESS NOTED OTHERWISE.
 PROVIDE PLENUM BOX ABOVE RETURN AIR GRILLES.

AC EQUIPMENT SCHEDULE

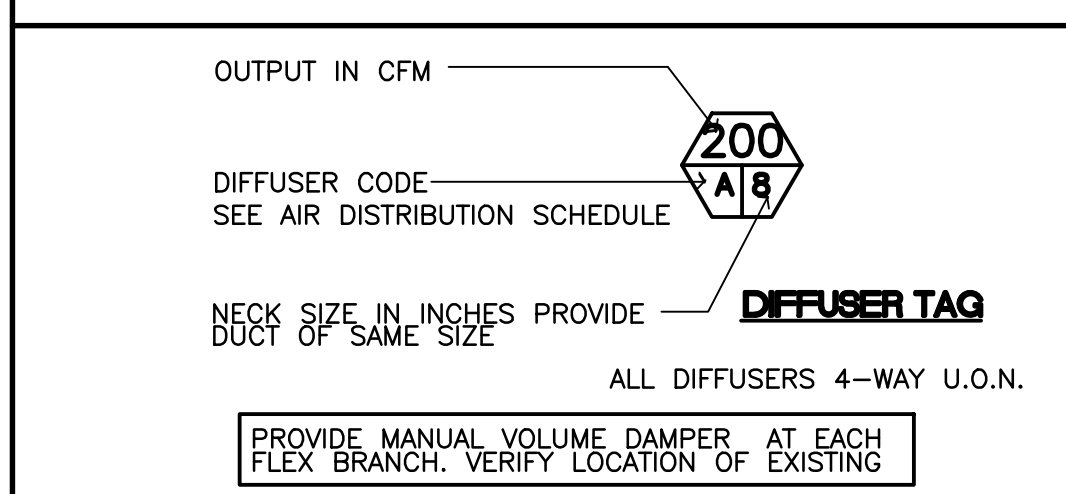
CONDENSING UNIT	CU NUMBER	CU-7, 8, 9
NOMINAL TONNAGE		2
MODEL		4TTR3024A1
SEER		13.5
CAPACITY TOTAL/SENS.		24,600 / 17,700
STAGES		Single
FLA-LRA		8.8A - 57.8A
MCA/MOP		12A / 20A
WEIGHT		197LBS
AIR HANDLER	AHU NUMBER	CU-7, 8, 9
REFRIGERANT		TEM4A0B24S21
LOCATION		SEE SCHEDULE
CFM NOMINAL		800
FAN MOTOR HP - FLA		1 1/4 / 1.3
ELECTRIC HEATER		3.84
DIMENSIONS H x W x D		45 1/8" X 18 1/2" X 21 1/8"
MCA/MOP		22A / 25A
WEIGHT		116 LBS
REF LINES SIZES		3/4", 3/8"

NOTES: MANUFACTURER TRANE

HVAC LEGEND



DIFFUSER LEGEND

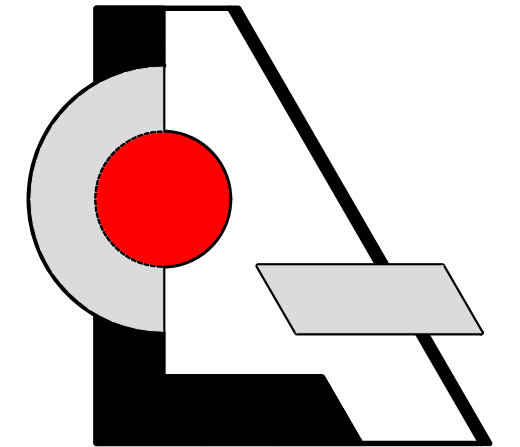
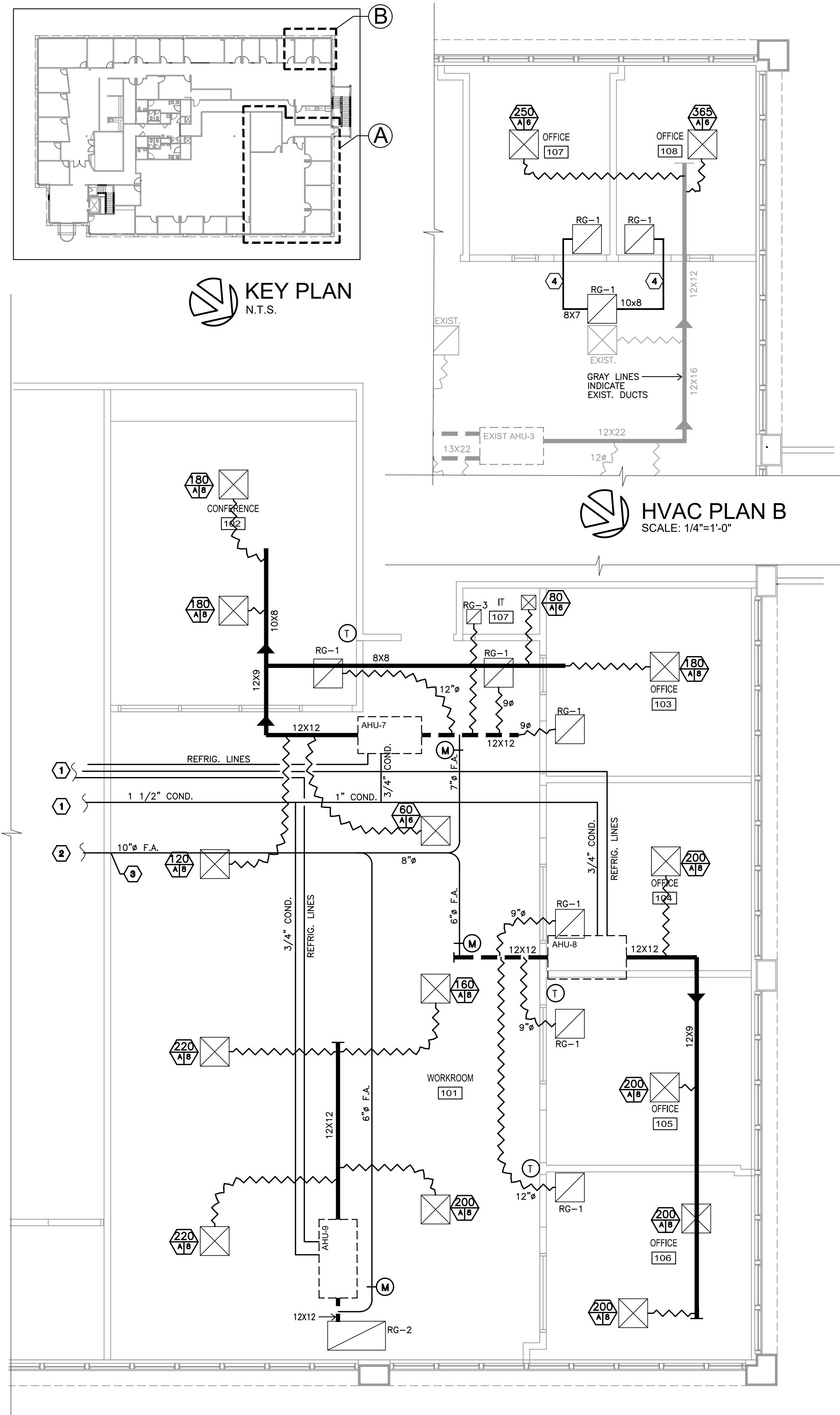


TYPICAL NOTES

- ALL SUPPLY & RETURN FLEX DUCTS SHALL BE LOOSELY COILED 360 DEGREES ABOVE CEILING FOR SOUND CONTROL. THIS APPLIES AT ENCLOSED OFFICES AND CONFERENCE ROOM
- SUPPLY & INSTALL ALL NEW FILTERS.
- MUST INSTALL TURNING VANES ON ALL ELBOWS & TEES.
- IN ADDITION TO TEST AND BALANCE PROVIDE COMFORT BALANCE AFTER USER OCCUPIES SPACE FOR AT LEAST 2 WEEKS
- TEST AND BALANCE SHALL BE BY INDEPENDENT LICENSED COMPANY
- INSTALL CONDENSING UNITS ON EXIST. EOPT. ROOF RACK. SECURE TO RACK TO MEET CODE WIND LOAD REQUIREMENTS, SEE DETAIL.
- PROVIDE 2" DEEP TRAP WITH CLEANOUTS, RUN 3/4" SCH 40 PVC DRAIN LINES WITH 1" FOAM PLASTIC INSULATION TO EXIST. CONDENSATE RISER.
- REMOVE EXISTING A/C SPLIT SYSTEM(S) FROM THE SPACE AND ROOF RACKS. REMOVE AND DO NOT REUSE REFRIGERANT LINES, REMOVE DUCTWORK, AND OTHER EXISTING DEVICES, THIS SHALL BE COMPLETE NEW SYSTEM. REFER TO DEMOLITION PLAN.

KEY NOTES:

- ROUTE REFRIGERANT AND CONDENSATE LINES TO EXISTING BUILDING CHASE. FIELD VERIFY LOCATION NEAR RESTROOMS PRIOR TO BID. PROVIDE RAIN CAPS. REMOVE UNUSED REFRIGERANT AND CONDENSATE FIRST.
- ROUTE FRESH AIR TO EXISTING CHASE. FIELD VERIFY PRIOR TO BID. PROVIDE RAIN CAPS. EXISTING CHASE IS ON RESTROOM AREA.
- LESS THAN 100 SQ INCH, FIRE DAMPER NOT REQUIRED.
- RIGID JUMPER DUCT. INSTALL AS SHOWN TO CONTROL SOUND ("C" TURNS)



LCA AA 003432

Architecture, Inc.
 1975 Sansbury's Way
 Suite 108
 West Palm Beach, FL 33411

Phone: (561) 493-4787
 Fax: (561) 493-4786

REVISIONS / DATE

NO.	DESCRIPTION	DATE

Interior Improvement for
Advantone Florida, Inc.
 855 SW 78th Ave. - Atrium "C" - Suite #202
 Plantation, Florida 33324

LESLEW A. CZACZYK AIA

AR 00015391

PROJ. NO. 16180.well

DESIGNED BY LAC

DRAWN BY MSB

DATE 07/25/16

SCALE AS SHOWN

HVAC PLANS
DETAILS