

EST. 1988

RICK GONZALEZ, A.I.A.
 PRESIDENT AR - 0014172
 300 CLEMATIS STREET
 WEST PALM BEACH
 FLORIDA 33401
 PH: (561) - 659 - 2383
 FAX: (561) - 659 - 5546

www.regarchitects.com

CORPORATION NUMBER
 AA-0002447

**RESTROOM
 FACILITIES
 at
 COMMONS
 PARK**

11600 POINCIANA BLVD.
 ROYAL PALM BEACH, FL 33411

REVISIONS	NO.
	▲
	▲
	▲
	▲

DATE 06-30-16

SCALE AS NOTED

DRAWN RB/FR/JS

CHECKED DA/SR

REG No. 16028

© 2016

OWNERSHIP AND USE OF THESE DOCUMENTS & SPECIFICATIONS AS INSTRUMENTS OF SERVICE ARE AND SHALL REMAIN THE PROPERTY OF THE ARCHITECT WHETHER THE PROJECT THEY ARE MADE FOR IS EXECUTED OR NOT. THEY SHALL NOT BE USED BY THE OWNER OR OTHERS ON OTHER PROJECTS OR FOR ADDITIONS TO THIS PROJECT BY OTHERS, EXCEPT BY AGREEMENT IN WRITING AND WITH APPROPRIATE COMPENSATION TO THE ARCHITECT.

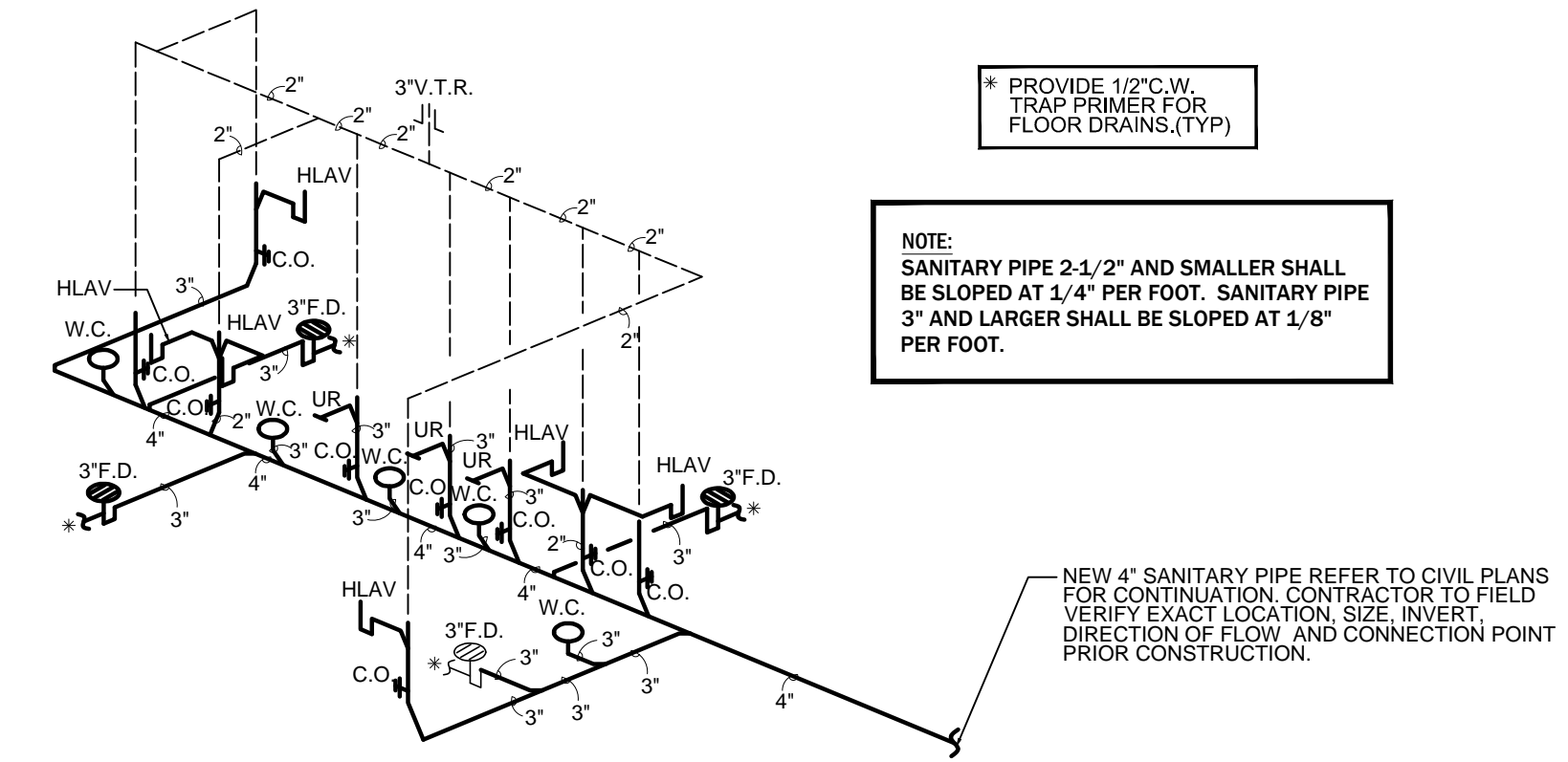
PROGRESS SET: 08/22/16



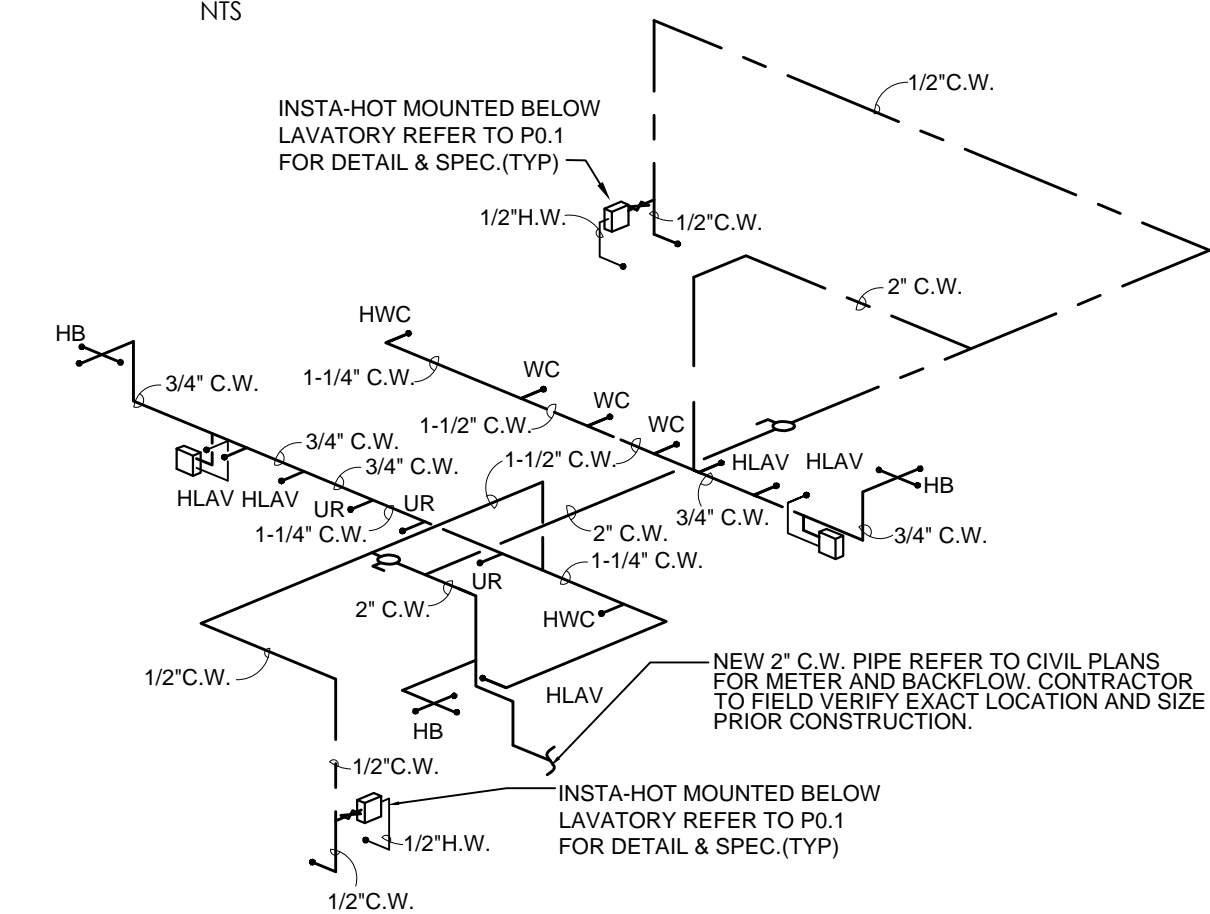
700 WEST HILLSBORO BLVD., - BLDG. #1, SUITE 204
 DEERFIELD BEACH, FLORIDA 33441
 TEL: (561) 391-9292 FAX: (561) 391-9898
 CERTIFICATE OF AUTHORIZATION NO. 2B1D7
 URBULA IAPRATA, P.E. LICENSE #73122
 STEPHEN F. ROLLIN, P.E. LICENSE #36428
 DONALD H. AUSTIN, JR., P.E. LICENSE #60651
 JASON BARBER, P.E. LICENSE #73050
 E-MAIL: INFO@FAECONSULTING.COM
 DESIGNED BY: RB/FR/JS PM: BJ P/N 16028

**RESTROOM
 PLUMBING PLAN
 & RISER DIAGRAMS**

P1.2



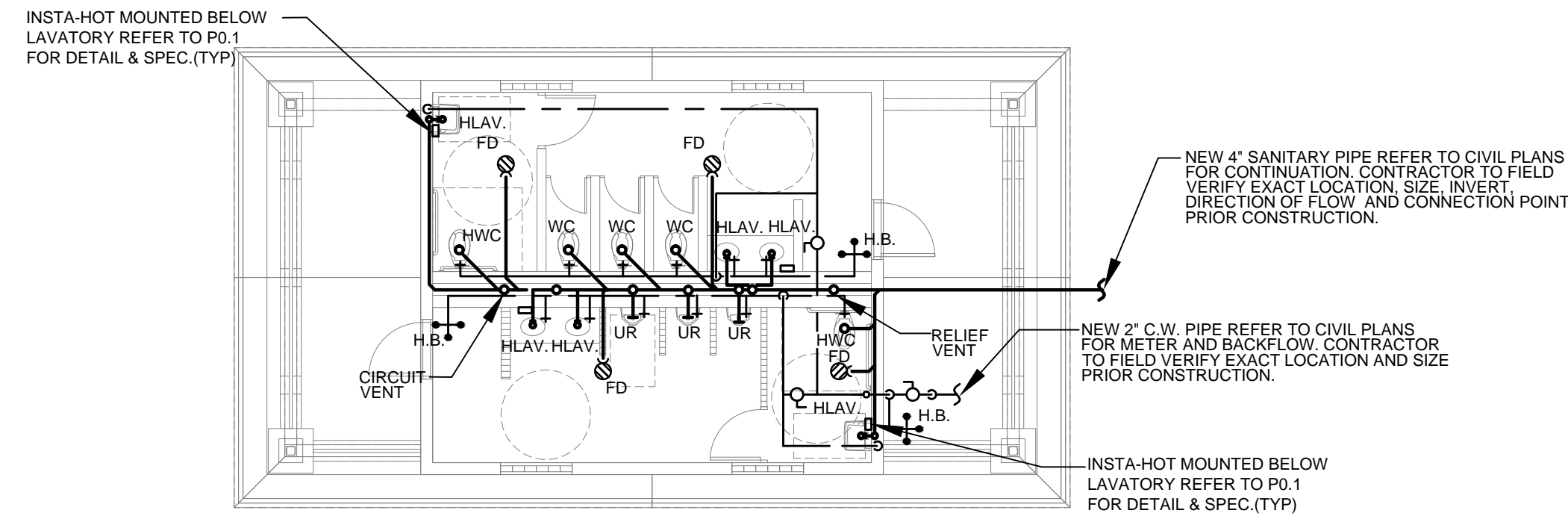
SANITARY RISER



WATER RISER

PLUMBING LEGEND

---	COLD WATER PIPING(C.W.)
---	SANITARY PIPING
---	VENT PIPING
→	PIPE TURN DOWN
↑	PIPE TURN UP
○	STOP VALVE(ISO)
+	STOP VALVE(FLOOR PLAN)
⊕	TRAP
⊙	BALL VALVE
⊖	SHOCK ARRESTOR
⊗	FLOOR DRAIN (F.D.)
⊙	CONNECTION POINT
⊕	EWC ELECTRIC WATER COOLER
⊕	H.W.C. HANDICAP WATER CLOSET
⊕	HLAV. HANDICAP LAVATORY
⊕	C.O. CLEAN OUT
⊕	WC WATER CLOSET
⊕	UR URINAL



1 RESTROOM PLUMBING PLAN
 1/8" = 1'-0"

PROGRESS OR CHECK SETS, BY THEIR NATURE, MAY BE INCOMPLETE AND ARE NOT TO BE USED FOR BIDDING OR CONSTRUCTION. CONTRACTOR RECOGNIZES HIS SOLE RESPONSIBILITY TO INCLUDE ALL CONTINGENCIES FOR DESIGN AND INSTALLATION TO MEET THE PROJECT REQUIREMENTS IN ANY PRICING EXERCISE.

PRIOR TO SUBMITTING THE BID, THE CONTRACTOR SHALL FIELD VERIFY ALL EXISTING CONDITIONS AND INFORM THE ARCHITECT AND THE ENGINEER OF ANY DISCREPANCY BETWEEN THESE DOCUMENTS AND THE EXISTING CONDITIONS AND SHALL INCLUDE IN THE BID TO CORRECT THE SAME AS DIRECTED. THE ENGINEER AND THE ARCHITECT, ARE NOT RESPONSIBLE FOR ANY ADDITIONAL COSTS RESULTING FROM VERIFYABLE EXISTING CONDITIONS DISCOVERED AFTER CONTRACT HAS BEEN AWARDED. NO CHANGES SHALL BE MADE TO THESE PLANS WITHOUT PRIOR APPROVAL FROM THE ENGINEER OF RECORD. ALL CHANGES SHALL BE SUBMITTED FOR REVIEW PRIOR TO INSTALLATION. NOT FOR BID UNTIL PERMIT HAS BEEN ISSUED.