

BOCA RATON HOUSING AUTHORITY

CONSTRUCTION SPECIFICATIONS
AND
CONTRACT DOCUMENTS

PROJECT MANUAL FOR THE LOIS MARTIN COMMUNITY CENTER IMPROVEMENT PROJECT

Located in Boca Raton, Florida
AUGUST 2016

BID SET

Volume Three of Three

KIMBERLY A. DELLASTATIOUS, P.A.
Commercial/Residential Architecture & Planning
300 South Dixie Highway, Ste. C
Lantana, Florida 33462
(561) 582-5622 / (561) 582-5623 Fax
kindell@mindspring.com

TABLE OF CONTENTS

BOCA RATON HOUSING AUTHORITY LOIS MARTIN COMMUNITY CENTER IMPROVEMENT

AUGUST 2016

VOLUME 1 OF 3

Section	Description	Number of Pages
CONTRACT DOCUMENTS		
00070	NOTICE TO PROCEED	0
00080	NOTICE OF INTENT	0
00085	ADDENDUM'S #X, #X, #X. #X	0
00100	INVITATION TO BID	2
00200	BID PROPOSAL	9
00205	HUD FORM 5369-A	5
00210	BID BOND	3
00215	FUTURE PERFORMANCE AND PAYMENT BOND LETTER	1
00218	SUB-CONTRACTOR'S LIST	2
00235	CERTIFICATION FOR CONTRACTS, GRANTS, LOANS, AND COOPERATIVE AGREEMENTS	1
00240	STATEMENT OF CONTRACTOR'S QUALIFICATION	3
00242	CONTRACTOR'S RESPONSIBILITY	3
00245	CERTIFICATE OF INSURANCE	1
00258	PUBLIC ENTITY CRIMES STATEMENT	2
00260	SECTION THREE CLAUSE	2
00270	CERTIFICATION OF LABOR STANDARDS	1
00285	THE AGREEMENT	4
00287	PERFORMANCE BOND AND PAYMENT BOND	11
00290	INFORMATION AVAILABLE TO BIDDERS	1
00300	INSTRUCTION TO BIDDERS	6
00400	GENERAL CONDITIONS – FORM HUD 5370	20
00410	SUPPLEMENTARY CONDITIONS	6
00425	CERTIFIED PAYROLL, STATEMENT OF COMPLIANCE WH-347 W/INSTRUCTIONS;	6
00430	NOTICE TO ALL EMPLOYEES	2
00860	LIST OF DRAWINGS	1
<hr/>		
00900-1	FEDERALLY FUNDED PROJECTS REQUIREMENTS	1
00900-2	FEDERALLY FUNDED PROJECTS OUTLINE / SUBMITTAL	1
00900-3	EXECUTIVE ORDER CLARIFICATION 13658	1
00900-4	WAGE DECISION RATES	7
00900-11	WAGE DECISION RATES REQUEST FOR DETERMINATION	1
00900-12	NOTICE FOR REQUIREMENT FOR AFFIRMATIVE ACTION	1
00900-12.1	MBE/WBE CONTRACTOR/SUBCONTRACTOR PARTICIATION	1
00900-12.2	MEB/WBE SUPPLIER PARTICIPATION	1
00900-13	EQUAL EMPLOYMENT OPPORTUNITY CLAUSE	1

00900-14	EQUAL EMPLOYMENT OPPORTUNITY SPECIFICATIONS	5
00900-19	MISCELLANEOUS CERTIFICATIONS AND COMPLIANCES	1
00900-20	SECTION 3 CLAUSE; FAIR LABOR STANDARDS	1
00900-21	CLEAN AIR; WORK HOURS; COPELAND ACT	1
00900-22	NON-COLLUSION AFFIDAVIT OF PRIME BIDDER	1
00900-23	ANTI-KICKBACK AFFIDAVIT	1
00900-24	CERTIFICATION OF ELIGIBILITY OF GENERAL CONTRACTOR	1
00900-25	CERTIFICATION OF NONSEGREGATED FACILITIES	1
00900-26	CERTIFICATION REGARDING DEPARTMENT, SUSPENSION, INELIGIBILITY, AND VOLUNTARY EXCLUSION-LOWER TIER PARTICIPANT (SUBCONTRACTOR)	1
00900-27	DISPLAY OF POSTERS	1
00900-28	FEDERAL LABOR STANDARDS PROVISIONS	5

TECHNICAL SPECIFICATIONS

DIVISION 1 - GENERAL REQUIREMENTS

01010	SUMMARY OF WORK	4
01012	PROJECT TIMELINE AND BENCHMARKS	1
01026	MEASUREMENT AND PAYMENT	2
01030	SAMPLE AIA DOCUMENTS	9
01120	ALTERATION PROJECT PROCEDURES	3
01300	ADMINISTRATIVE REQUIREMENTS	5
01320	SUBMITTALS	2
01400	GENERAL QUALITY CONTROL	3
01600	PRODUCT REQUIREMENTS	2
01650	PRODUCT SUBSTITUTIONS	1
01740	CLOSEOUT SUBMITTALS	2

VOLUME 2 OF 3

DIVISION 2 – SPECIFIC PROJECT REQUIREMENTS

This section contains sample cut sheets of specified products found in the drawings	91
---	----

VOLUME 3 OF 3

DIVISION 3 – EXISTING PROJECT PHOTOGRAPHS

This section contains existing job site photographs of the work areas of the project	24
--	----

DIVISION 3

EXISTING PROJECT PHOTOGRAPHS

The following section contains existing project photographs of the work area of the project. These photographs are for informational purposes only and the inclusion of these photographs does not relieve the bidder from completing their job site visit of the project prior to the bid.



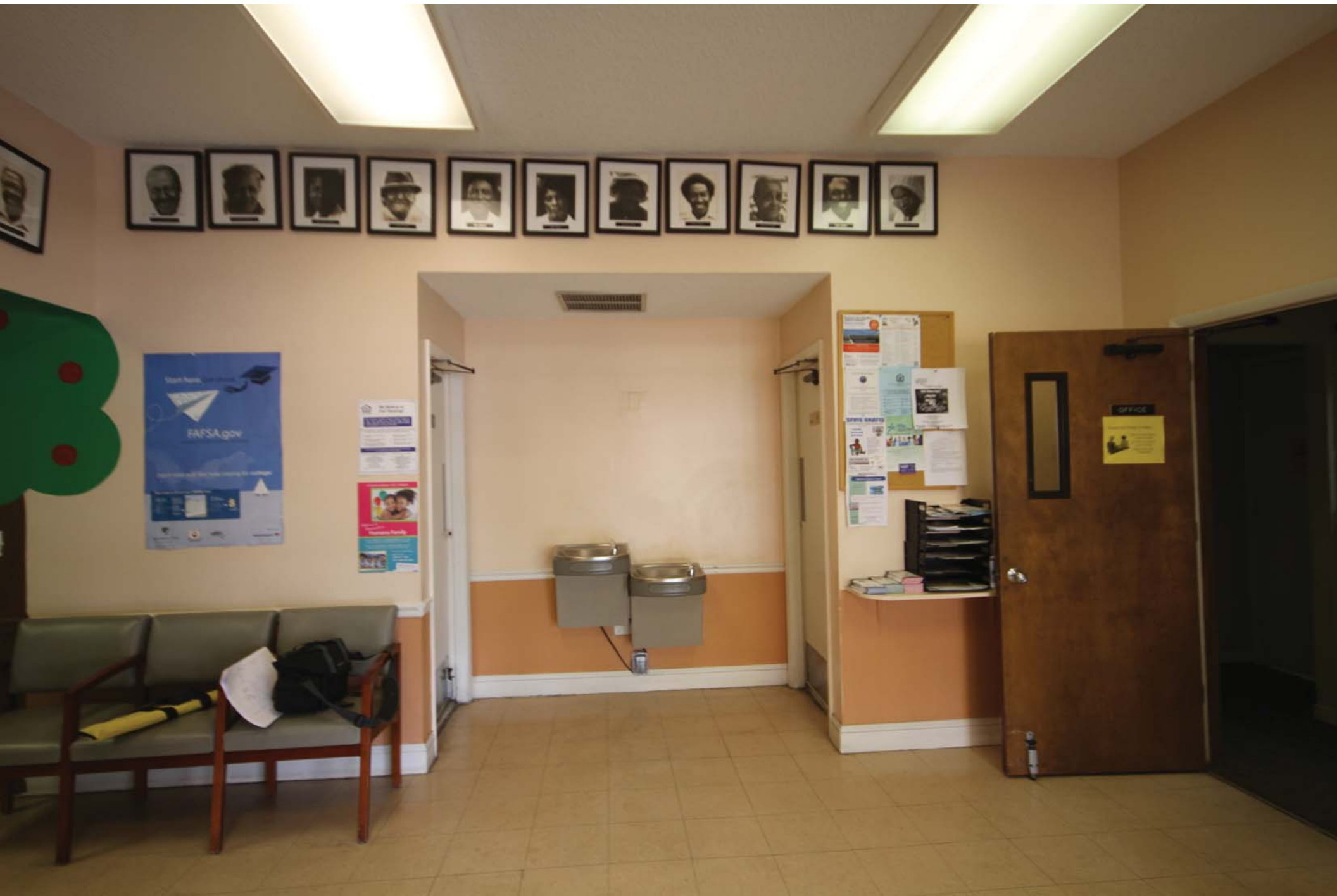
TAXES DONE FREE VITA
PREPARACION DE IMPUESTOS GRATIS VITA
UnitedWayPBC.org 211













NOTICE

EMERGENCY MAINTENANCE CELL NUMBER
561-750-4252

In Public, Please Use
Elevator Stairs and
Do Not Use Elevator
In Public Areas

NOTICE

NOTICE

NOTICE

PROVIDER

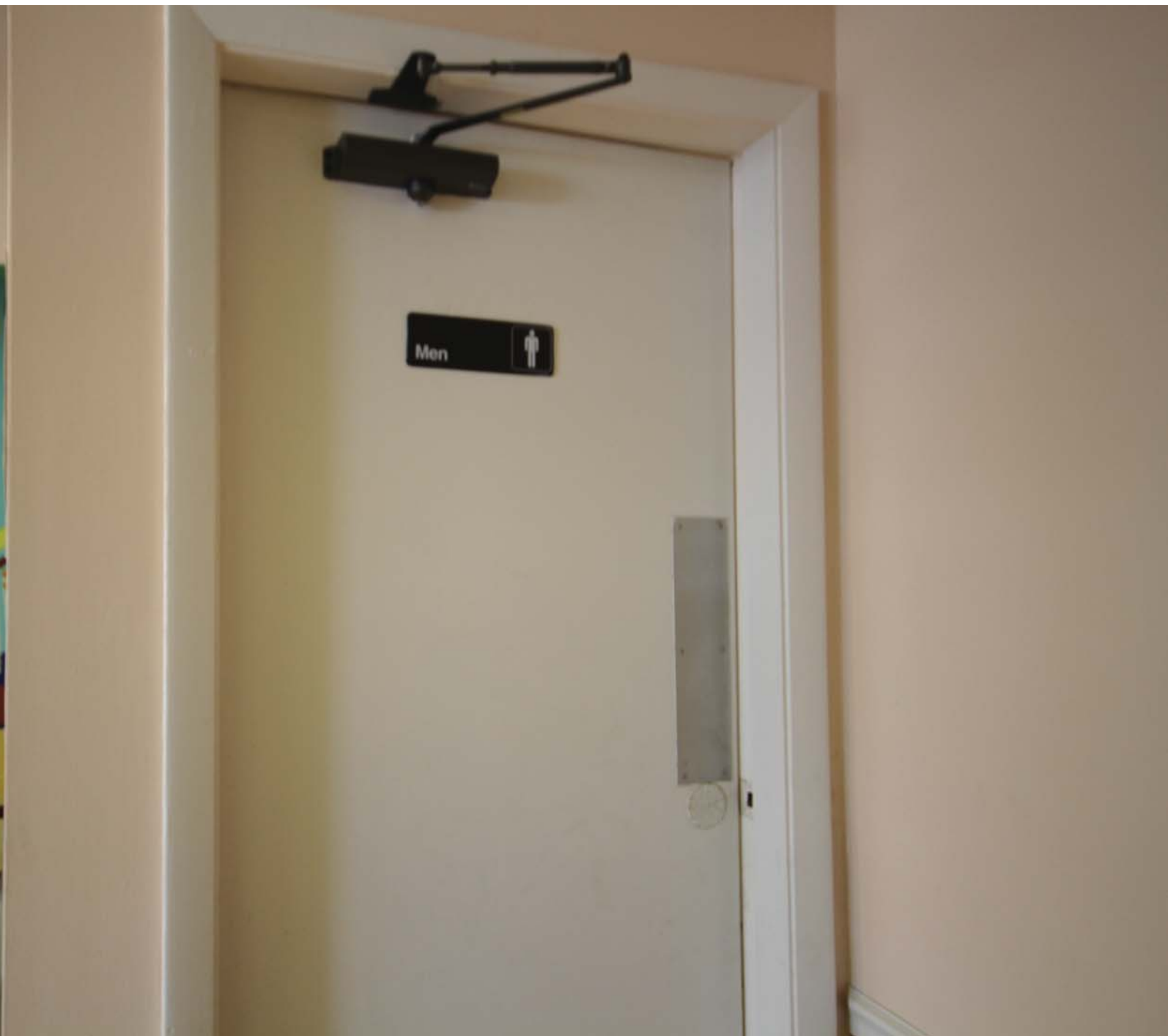
PROVIDER

Vita HEALTH

Expanded Health - For
Longer Quality of Life

Plan for a
Healthy Tomorrow

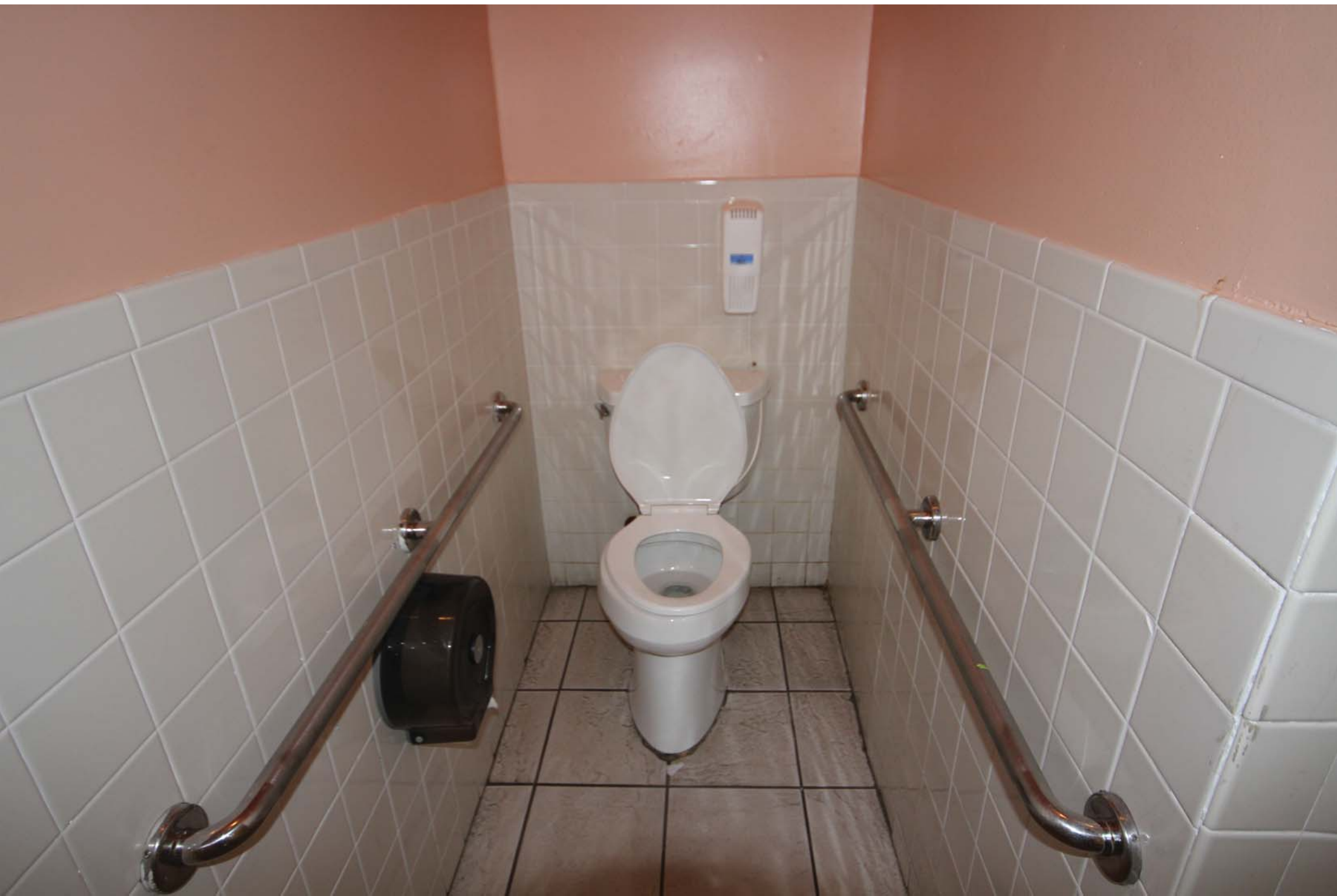
Life Now













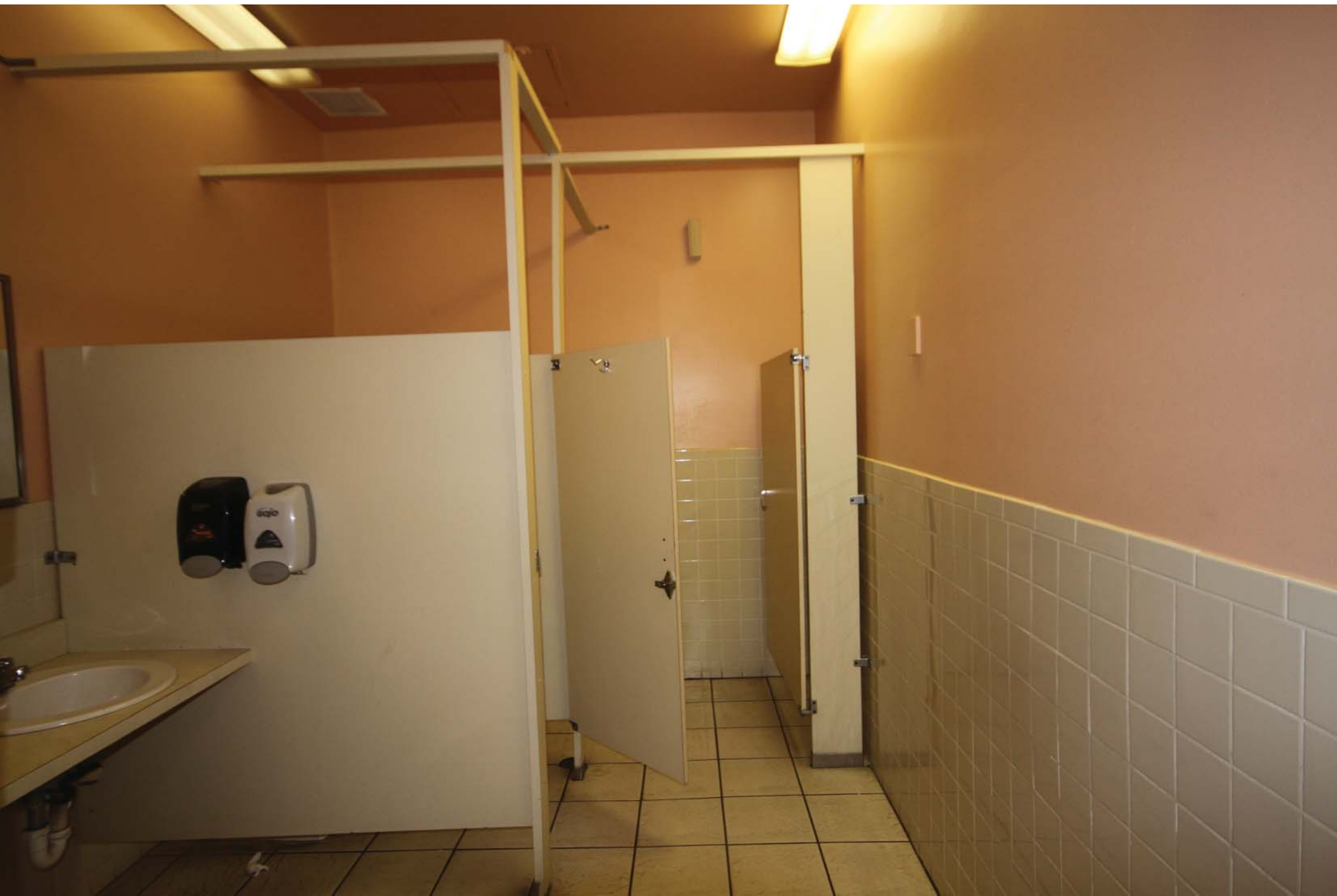




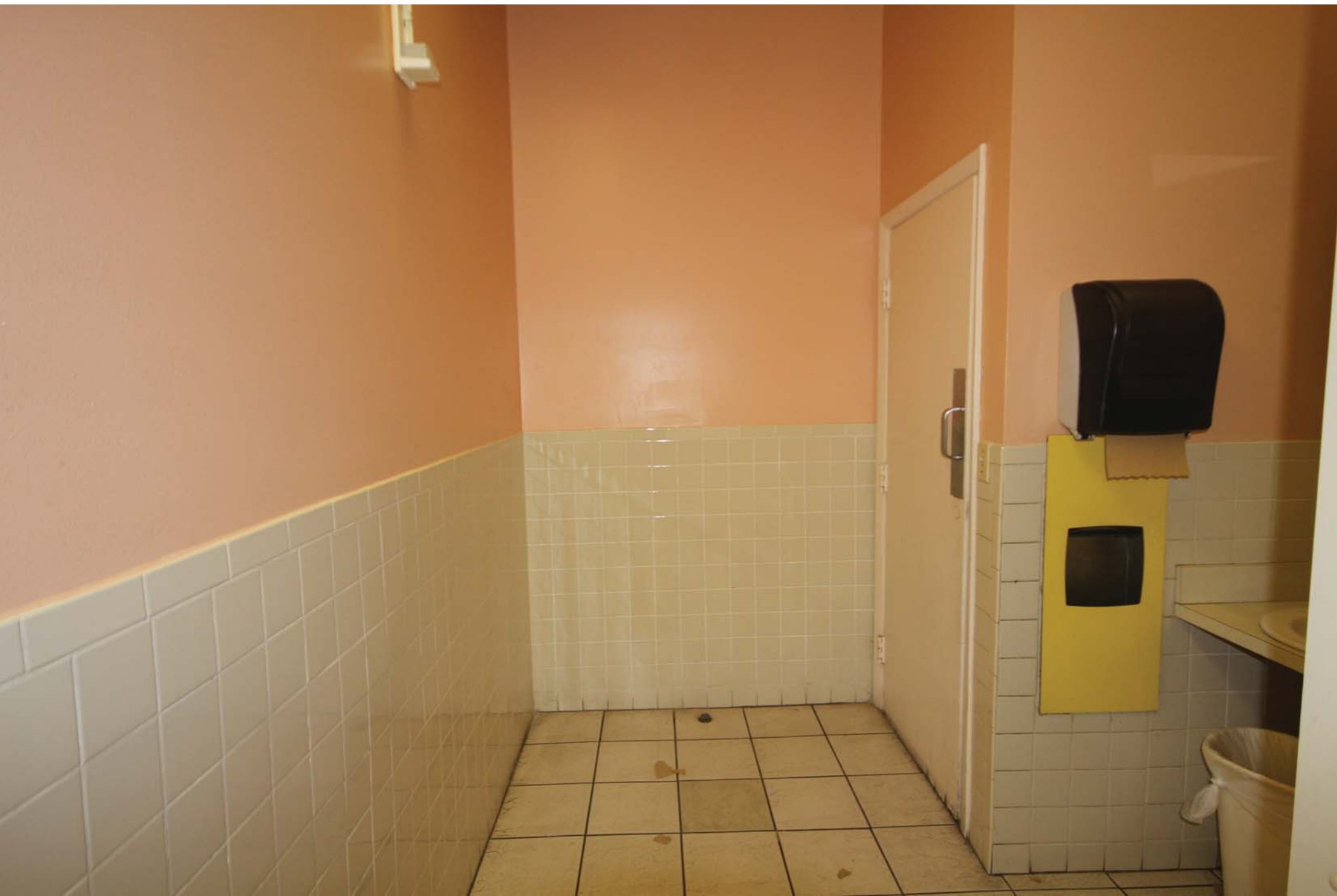
Women



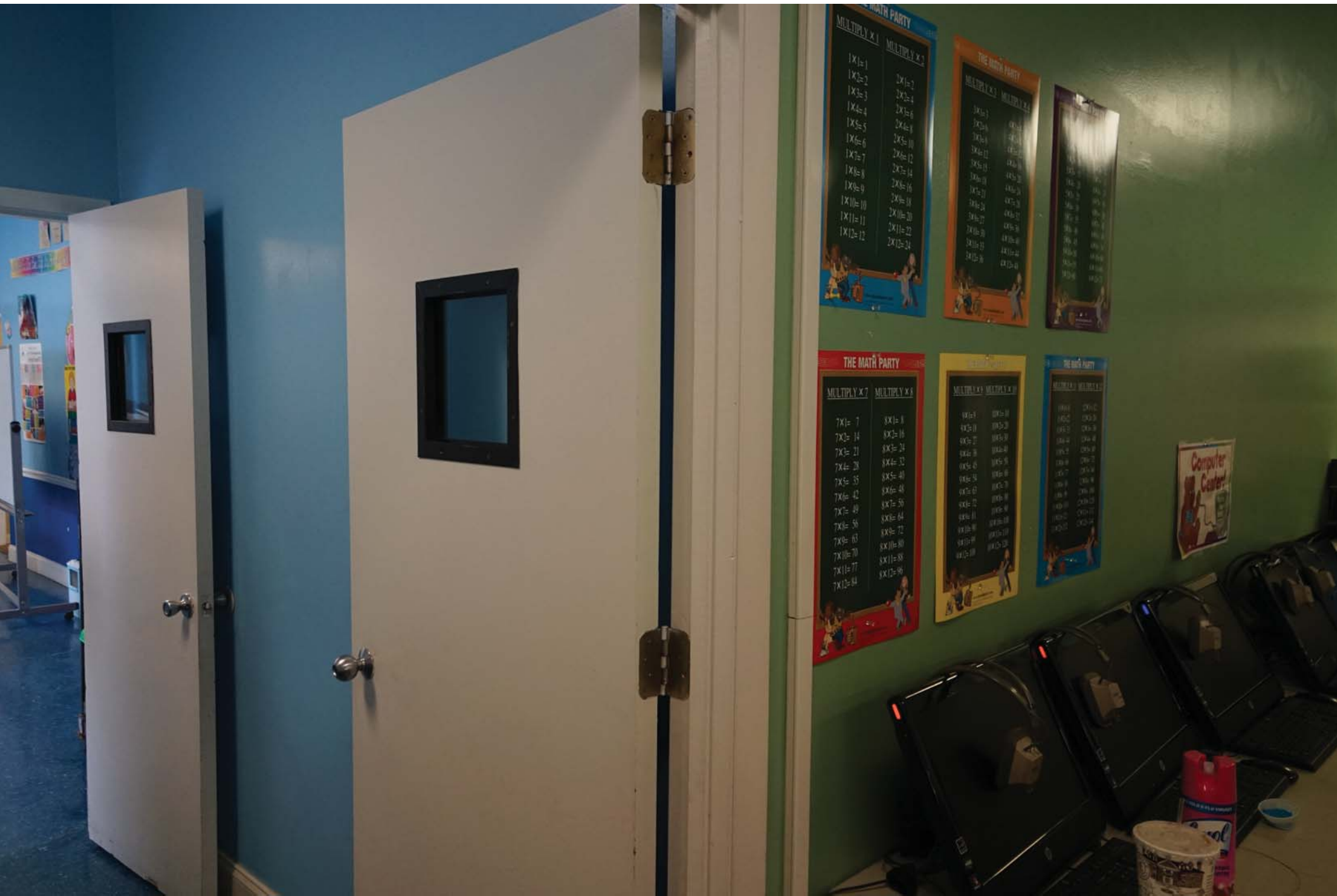












MULTIPLY x 1

1x1=1	2x1=2
1x2=2	2x2=4
1x3=3	2x3=6
1x4=4	2x4=8
1x5=5	2x5=10
1x6=6	2x6=12
1x7=7	2x7=14
1x8=8	2x8=16
1x9=9	2x9=18
1x10=10	2x10=20
1x11=11	2x11=22
1x12=12	2x12=24

MULTIPLY x 2

3x2=6	4x2=8
5x2=10	6x2=12
7x2=14	8x2=16
9x2=18	10x2=20
11x2=22	12x2=24
13x2=26	14x2=28
15x2=30	16x2=32
17x2=34	18x2=36
19x2=38	20x2=40
21x2=42	22x2=44
23x2=46	24x2=48

MULTIPLY x 3

3x3=9	4x3=12
5x3=15	6x3=18
7x3=21	8x3=24
9x3=27	10x3=30
11x3=33	12x3=36
13x3=39	14x3=42
15x3=45	16x3=48
17x3=51	18x3=54
19x3=57	20x3=60
21x3=63	22x3=66
23x3=69	24x3=72

MULTIPLY x 7

7x1=7	8x1=8
7x2=14	8x2=16
7x3=21	8x3=24
7x4=28	8x4=32
7x5=35	8x5=40
7x6=42	8x6=48
7x7=49	8x7=56
7x8=56	8x8=64
7x9=63	8x9=72
7x10=70	8x10=80
7x11=77	8x11=88
7x12=84	8x12=96

MULTIPLY x 4

4x4=16	5x4=20
6x4=24	7x4=28
8x4=32	9x4=36
10x4=40	11x4=44
12x4=48	13x4=52
14x4=56	15x4=60
16x4=64	17x4=68
18x4=72	19x4=76
20x4=80	21x4=84
22x4=88	23x4=92
24x4=96	

MULTIPLY x 5

5x5=25	6x5=30
7x5=35	8x5=40
9x5=45	10x5=50
11x5=55	12x5=60
13x5=65	14x5=70
15x5=75	16x5=80
17x5=85	18x5=90
19x5=95	20x5=100
21x5=105	22x5=110
23x5=115	24x5=120

Computer Center



TODAY'S SCHEDULE



Bb



Back to School

