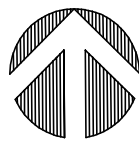


## ROOF PLAN

1/8"=1'-0"



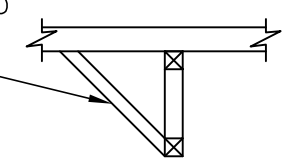
### NOTES:

- PROVIDE PLYWOOD BETWEEN EVERY OTHER TRUSS. SEE TYP. WALL/BLOCKING DETAIL ON SHEET S-3.
- HEAVY TIMBER TRUSSES TO BE DESIGNED BY HEAVY TIMBER ENGINEER.

⊕ - INDICATES 2,000 LB POINT LOAD

① - INDICATES 6x6 TIMBER BRACE TO BOTT. CHORD OF TRUSS

B=1 8x12" w/ (4)#6 #3 STIRRUPS @ 5' o.c.



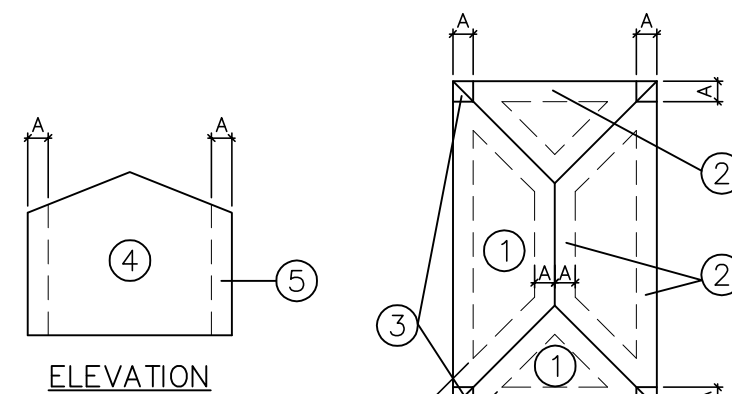
Structural Drawing Updated  
Based on Architectural Backgrounds Dated 7-20-16

ULTIMATE					
COMPONENT & CLADDING WIND DESIGN PRESSURES					
PRESSURES BASED ON $V_{wse}$	ROOF WIND LOADS			WALL WIND LOADS (SEE NOTE 1)	
	ROOF AREA (10 SF)			WALL AREA (10 SF)	
Kd IS INCLUDED	1	2	3	4	5
PRESSURE (PSF)	40.1	40.1	40.1	69.5	69.5
SUCTION (PSF)	-63.6	-110.8	-110.8	-74.5	-93.1

- EXTERIOR GLAZED OPENINGS IN BUILDINGS SHALL COMPLY WITH FLORIDA BUILDING CODE 5TH EDITION (2014) BY EITHER BEING DESIGNED FOR IMPACT RESISTANCE OR BEING PROTECTED BY IMPACT PROTECTIVE SYSTEMS.
- WIND DESIGN PRESSURES NOTED MAY BE MULTIPLIED BY (.6) FOR COMPARISON TO ALLOWABLE (NOMINAL) WIND PRESSURES OF TESTED ASSEMBLIES. PER SECTION 1609.1.5 OF FBC 5TH EDITION (2014).
- REFER TO STRUCTURAL NOTES FOR ALL WIND LOAD PARAMETERS.
- CORNER DISTANCE, A = 6 FEET

ALLOWABLE					
COMPONENT & CLADDING WIND DESIGN PRESSURES					
PRESSURES BASED ON $V_{wz}$	ROOF WIND LOADS			WALL WIND LOADS (SEE NOTE 1)	
	ROOF AREA (10 SF)			WALL AREA (10 SF)	
	1	2	3	4	5
Kd IS INCLUDED	24	24	24	41.7	41.7
PRESSURE (PSF)	24	24	24	41.7	41.7
SUCTION (PSF)	-38.2	-66.5	-66.5	45.3	-55.9

- EXTERIOR GLAZED OPENINGS IN BUILDINGS SHALL COMPLY WITH FLORIDA BUILDING CODE 5TH EDITION (2014) BY EITHER BEING DESIGNED FOR IMPACT RESISTANCE OR BEING PROTECTED BY IMPACT PROTECTIVE SYSTEMS.
- REFER TO STRUCTURAL NOTES FOR ALL WIND LOAD PARAMETERS.
- CORNER DISTANCE, A = 6 FEET



TRUSS TIE DOWN SCHEDULE									
MARK	MANUF & MODEL NO.	STRUCTURAL COMPONENT	PRODUCT APPROVAL	NAILS TO COMPONENT	NAILS TO SEAT	BOLTS	ALLOWABLE UPLIFT	LATERAL LOAD PARALLEL TO WALL	LATERAL LOAD PERPEND. TO WALL
(A)	SIMPSON HT-14-12	TRUSS/MASONRY OR CONCRETE	FL11473.5	7-10d x 1 1/2"	-	-	1265 # (*)	415 #	1100 #
(B)	SIMPSON HT-14-18	TRUSS/MASONRY OR CONCRETE	FL11473.5	14-10d x 1 1/2"	5-10d x 1 1/2"	-	1810 # (*)	415 #	1100 #
(C)	SIMPSON MGT	ORDER TRUSS / MASONRY OR CONC.	FL11470.7	22-10d	NOTE 5	5/8"	3965 # (**)	-	-
(D)	SIMPSON HT-14	TRUSS	-	12-8d x 1 1/2"	-	-	1350 #	265 #	515 #
(F)	SIMPSON HT-14-10	TRUSS	-	4-SDS 1/4" x 3"	-	-	695 #	940 #	1165 #
(P)	SIMPSON HT-14-10	TRUSS	FL10852.13	14-16d TO TRUSS	14-16d TO BEAM	-	2540 # (**)	-	-
(G)	SIMPSON HT-14-10	TRUSS	FL10456.33	7-10d x 1 1/2"	7-10d x 1 1/2"	-	840 # (*)	-	-
(H)	SIMPSON HT-14-10	TRUSS	FL10456.33	7-10d	7-10d	-	1000 # (*)	-	-
(I)	SIMPSON HT-14-10	TRUSS/MASONRY OR CONCRETE	FL11473.9	12-10d x 1 1/2"	-	-	2235 # (*)	335 #	730 #
(J)	SIMPSON HT-14-10	TRUSS/MASONRY OR CONCRETE	FL10456.18	16-10d	NOTE 5	2-3/4"	10980 # (**)	-	-
(K)	HQAM 10	TRUSS / CMU	FL11473.6	4-SDS 1/4" x 1 1/2"	(4) 1/4" x 2 3/4" TIE	-	850 #	1105 #	1005 #
(L)	SIMPSON HT-14-10	TRUSS / CMU	FL11470.6	16-16d SINKER	(1) 1/4" x 2 3/4" TIE	-	2150 # (**)	-	-
(M)	SIMPSON HT-14-10	TRUSS / CMU	FL11473.2	7-10d	(1) 1/4" x 2 3/4" TIE TO BEAM	-	860 # (*)	235 #	190 #

- NOTES:
- (\*) - ONE PLY MEMBER (\*\*) - TWO PLY (MIN.) MEMBER
  - T.B. - THRU-BOLT
  - U.N.O. - UNLESS NOTED OTHERWISE
  - APPROVED EQUAL OR BETTER TIE DOWNS FOR THE SAME LATERAL & UPLIFT LOADS ARE ACCEPTABLE.
  - USE "ULTRABOND 1" EPOXY W/ 1/2" MIN. EMBED.
  - USE "ULTRABOND 1" EPOXY W/ 5" MIN. EMBED.

## NOT FOR CONSTRUCTION

THESE ARE PROGRESS DRAWINGS, THEREFORE THEY ARE ISSUED PRIOR TO COMPLETION OF THE STRUCTURAL DESIGN, AND OTHER DESIGN DISCIPLINES, INCLUDING BUT NOT LIMITED TO ARCHITECTURAL OR MECHANICAL DESIGNS; AND AS SUCH, ARE INCOMPLETE BY NATURE FOR THE COMPREHENSIVE SCOPE OF THE PROJECT. ALLOWANCES FOR STRUCTURAL ELEMENTS REQUIRED DUE TO THE COMPLETION AND CROSS-COORDINATION OF ALL OTHER DISCIPLINES SHOULD BE MADE.

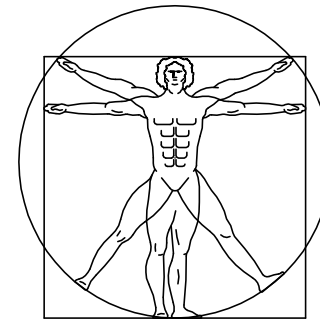


**ONM&J**  
O'Donnell, Naccarato, Mignogna Jackson  
STRUCTURAL ENGINEERS

321 15TH STREET, SUITE 200  
WEST PALM BEACH, FLORIDA 33401  
(561) 835-1994 FAX (561) 835-8255

UIC: #0004386  
JOB # 341.110

**REG**  
ARCHITECTS  
INTERIORS  
PLANNERS  
INCORPORATED



EST. 1988

RICK GONZALEZ, AIA  
PRESIDENT AR-0014172

300 CLEMATIS STREET  
WEST PALM BEACH  
FLORIDA 33401

PH: (561) 659-2383  
FAX: (561) 659-5546

www.regarchitects.com

CORPORATION NUMBER  
AA-0002447

AMPHITHEATRE  
at  
COMMONS  
PARK

11600 POINCIANA BLVD.  
ROYAL PALM BEACH, FL 33411

REVISIONS	NO.
	1
	2
	3
	4

DATE 06-30-16

SCALE

DRAWN

CHECKED

REG No. 15048  
© 2016

OWNERSHIP AND USE OF THESE DOCUMENTS & SPECIFICATIONS AS INSTRUMENTS OF SERVICE ARE AND SHALL REMAIN THE PROPERTY OF THE ARCHITECT WHETHER THE PROJECT THEY ARE MADE FOR IS EXECUTED OR NOT. THEY SHALL NOT BE USED BY THE OWNER OR OTHERS ON OTHER PROJECTS OR FOR ADDITIONS TO THIS PROJECT BY OTHERS, EXCEPT BY AGREEMENT IN WRITING AND WITH APPROPRIATE COMPENSATION TO THE ARCHITECT.

S-2