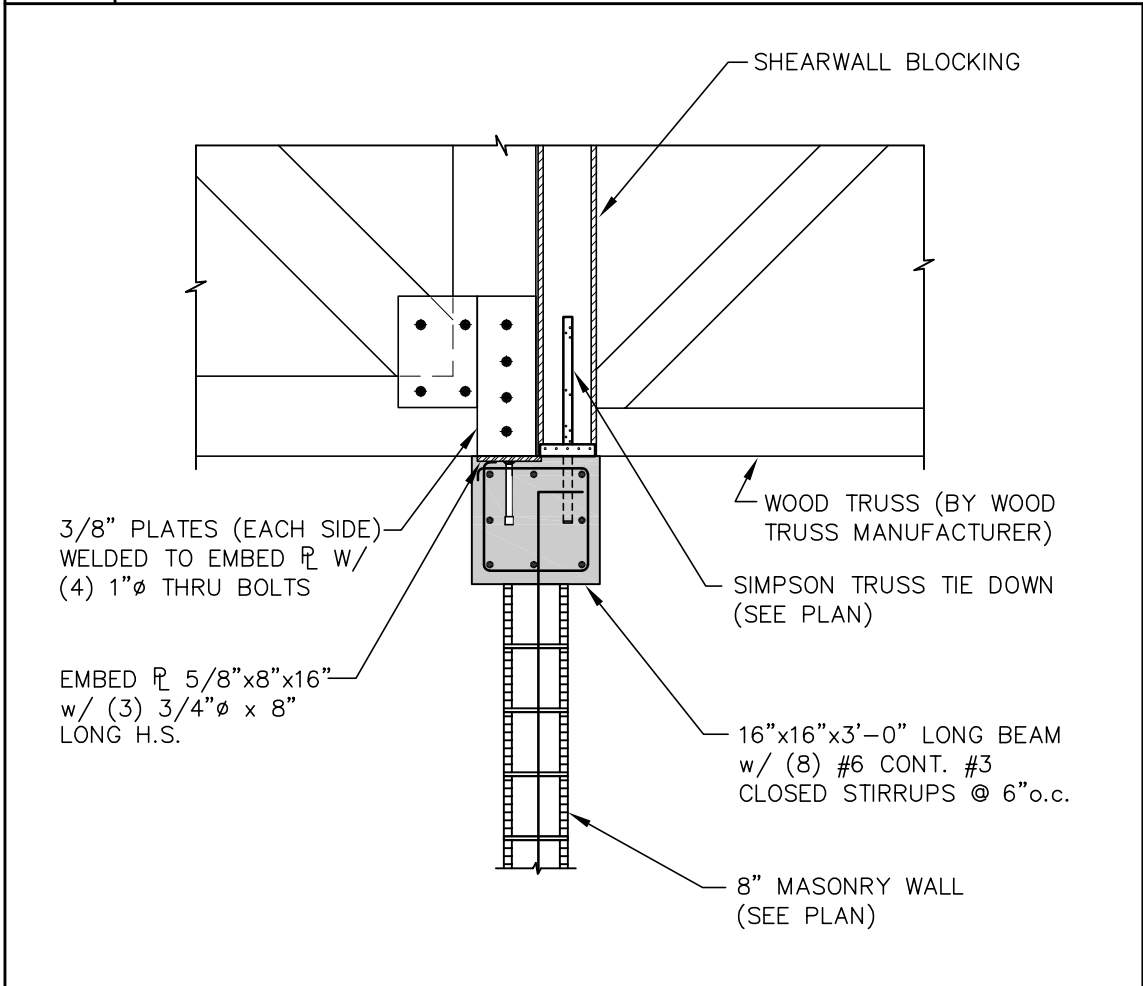
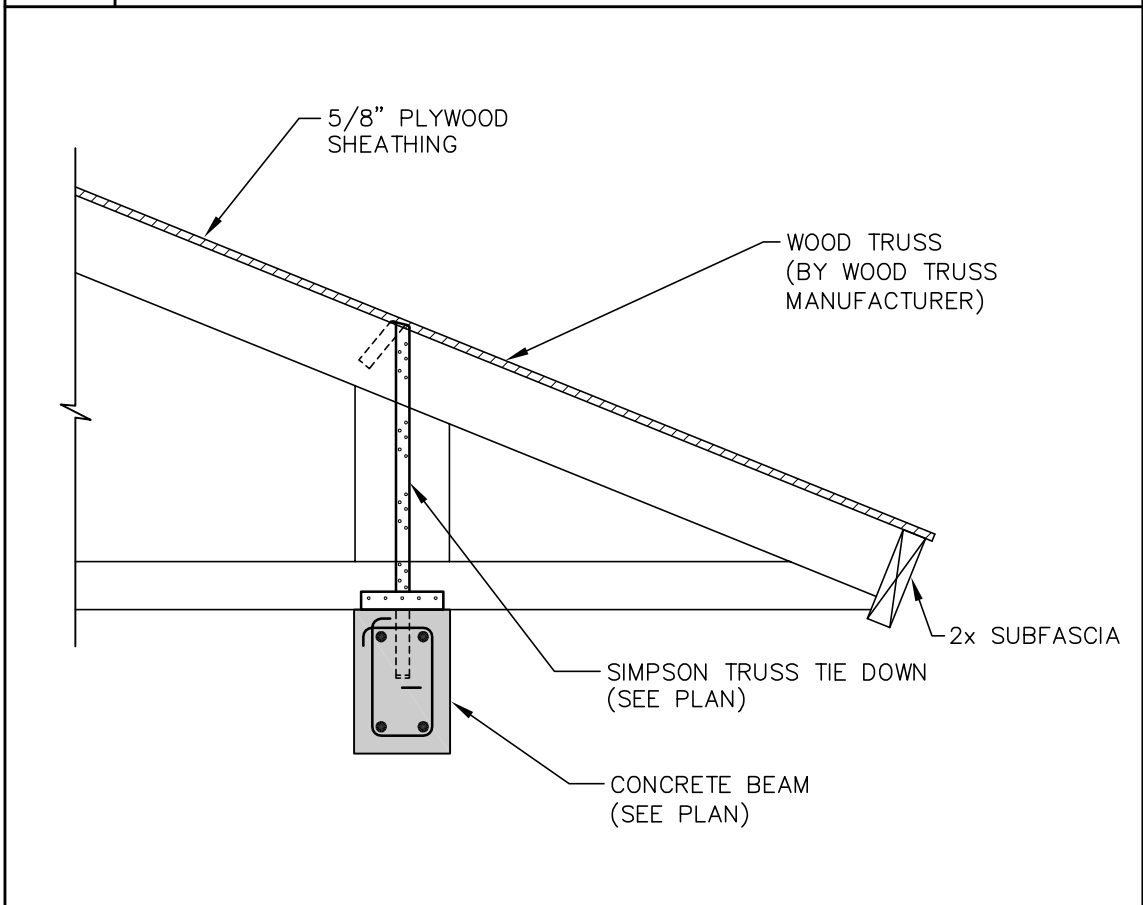


3 SECTION 1/4" = 1'-0"



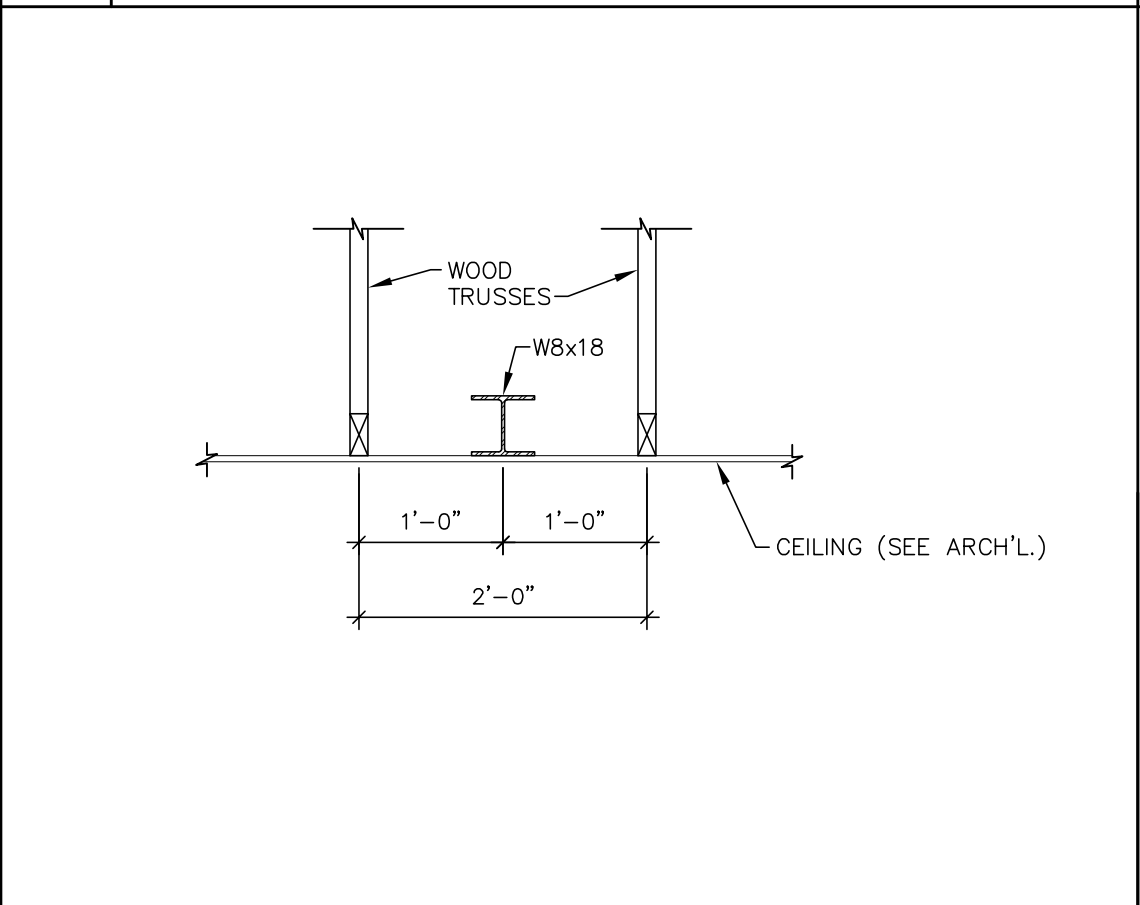
8 SECTION 1/2" = 1'-0"



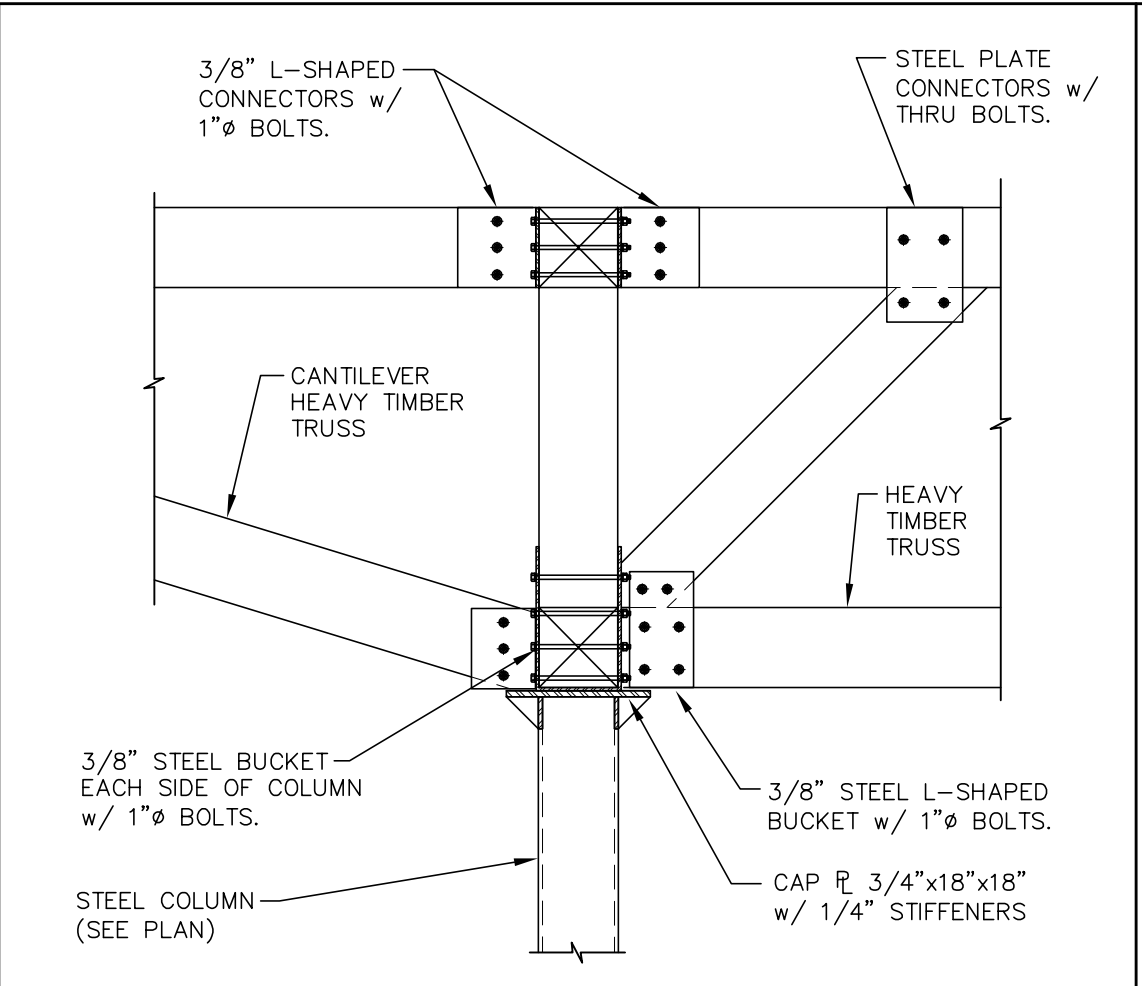
12 SECTION 3/4" = 1'-0"



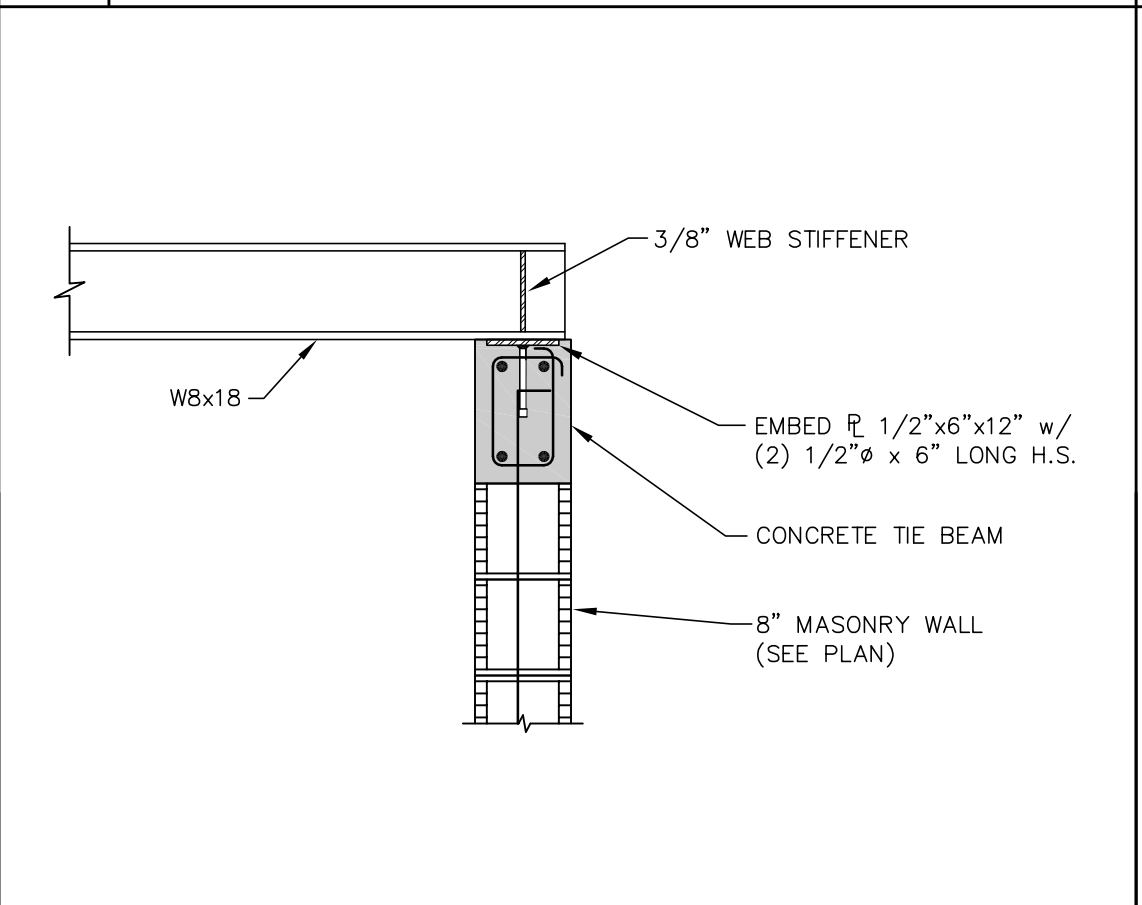
7 SECTION 1/2" = 1'-0"



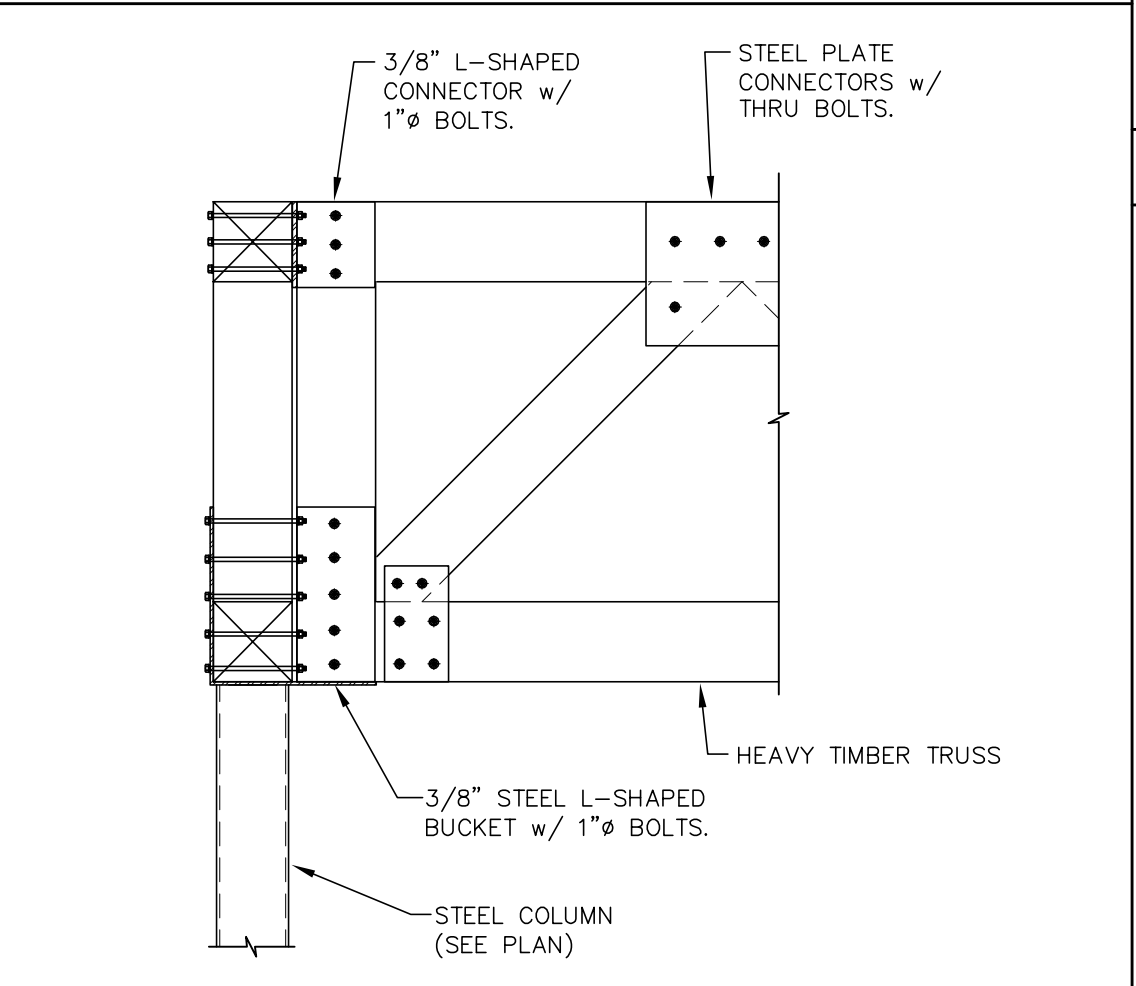
11 SECTION 3/4" = 1'-0"



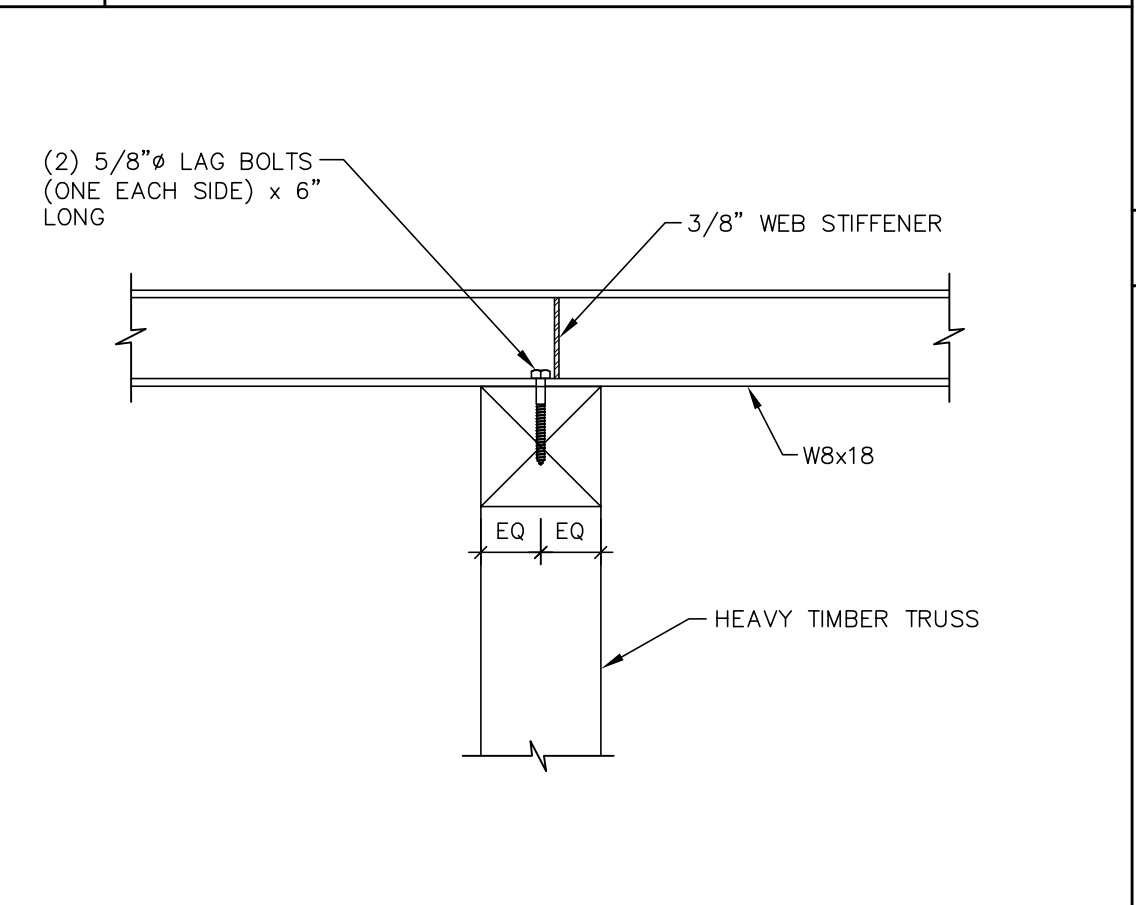
6 SECTION 1/2" = 1'-0"



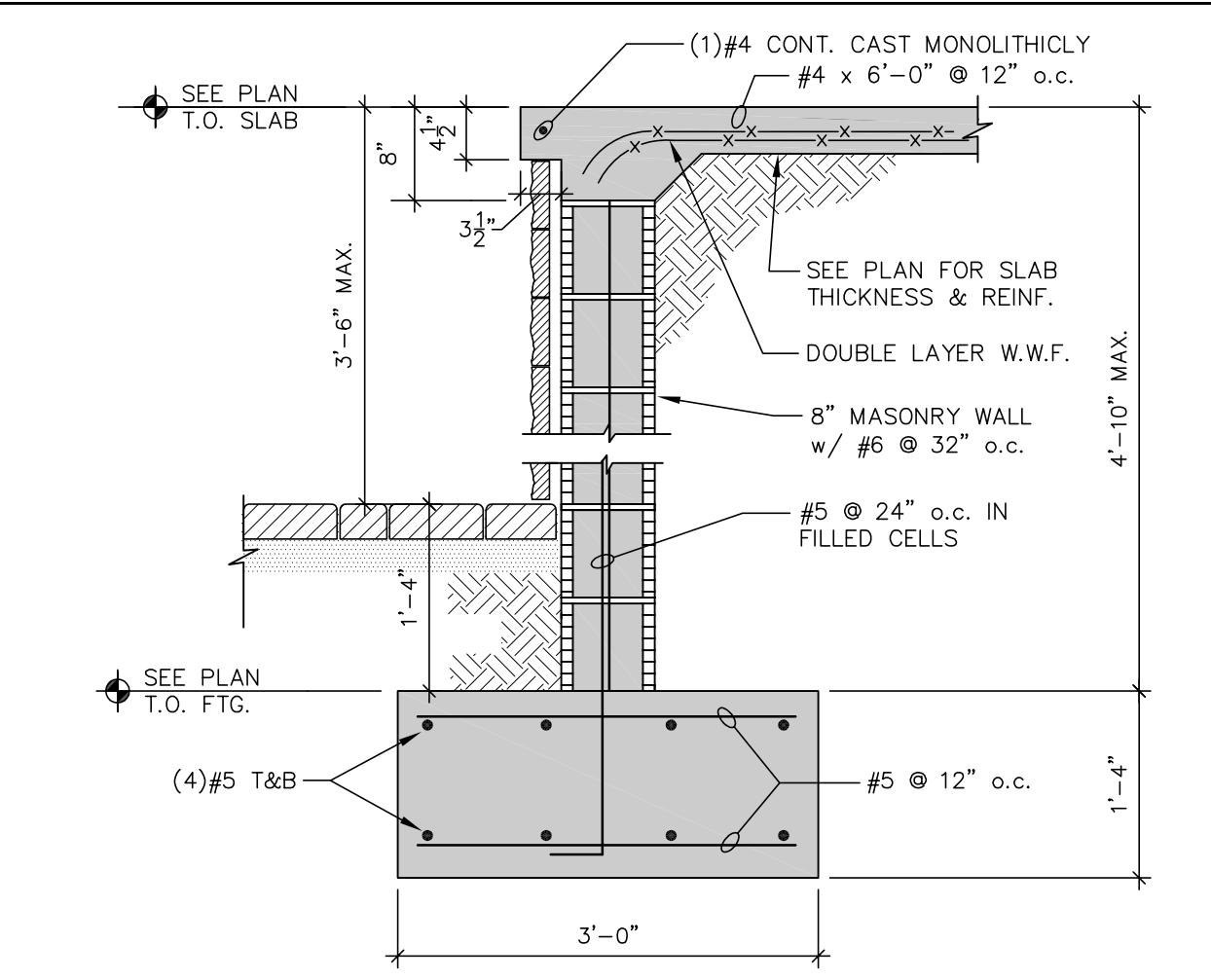
10 SECTION 3/4" = 1'-0"



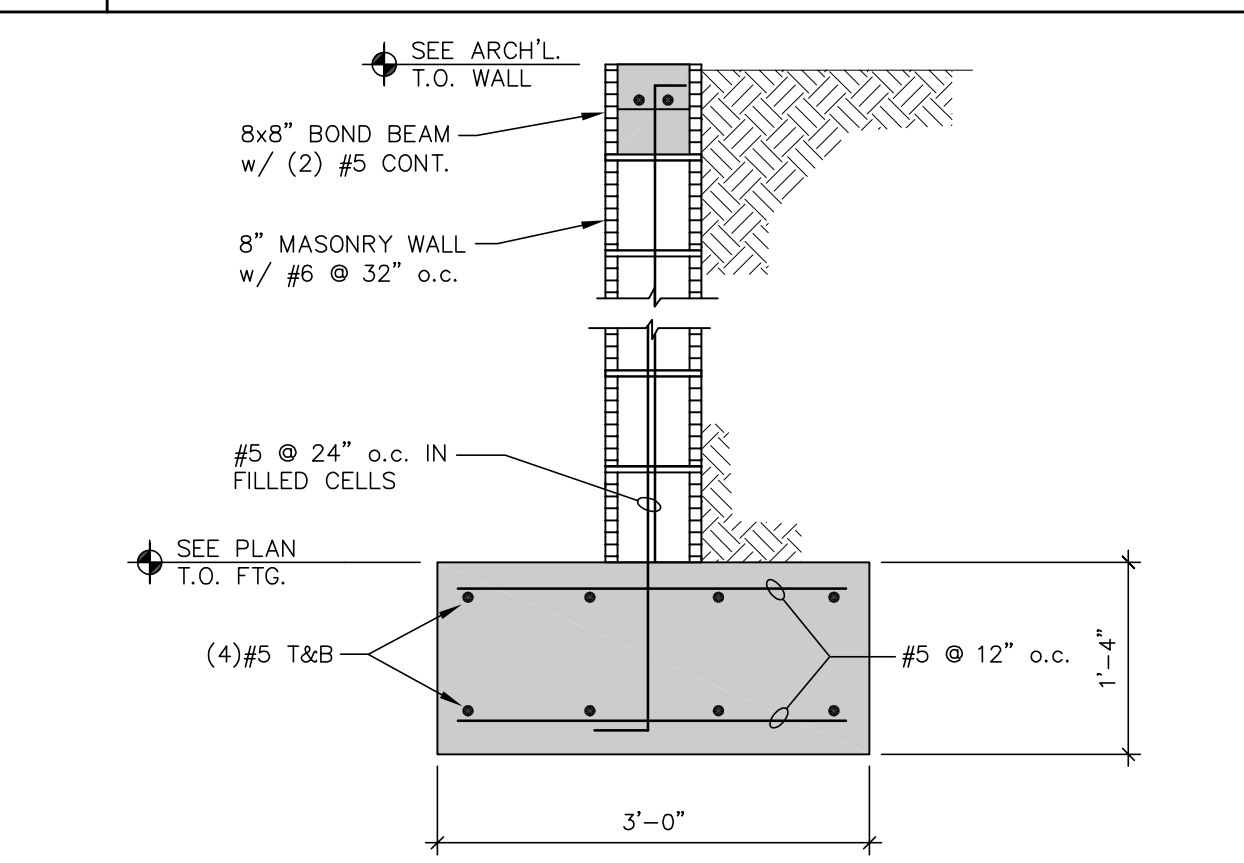
5 SECTION 1/2" = 1'-0"



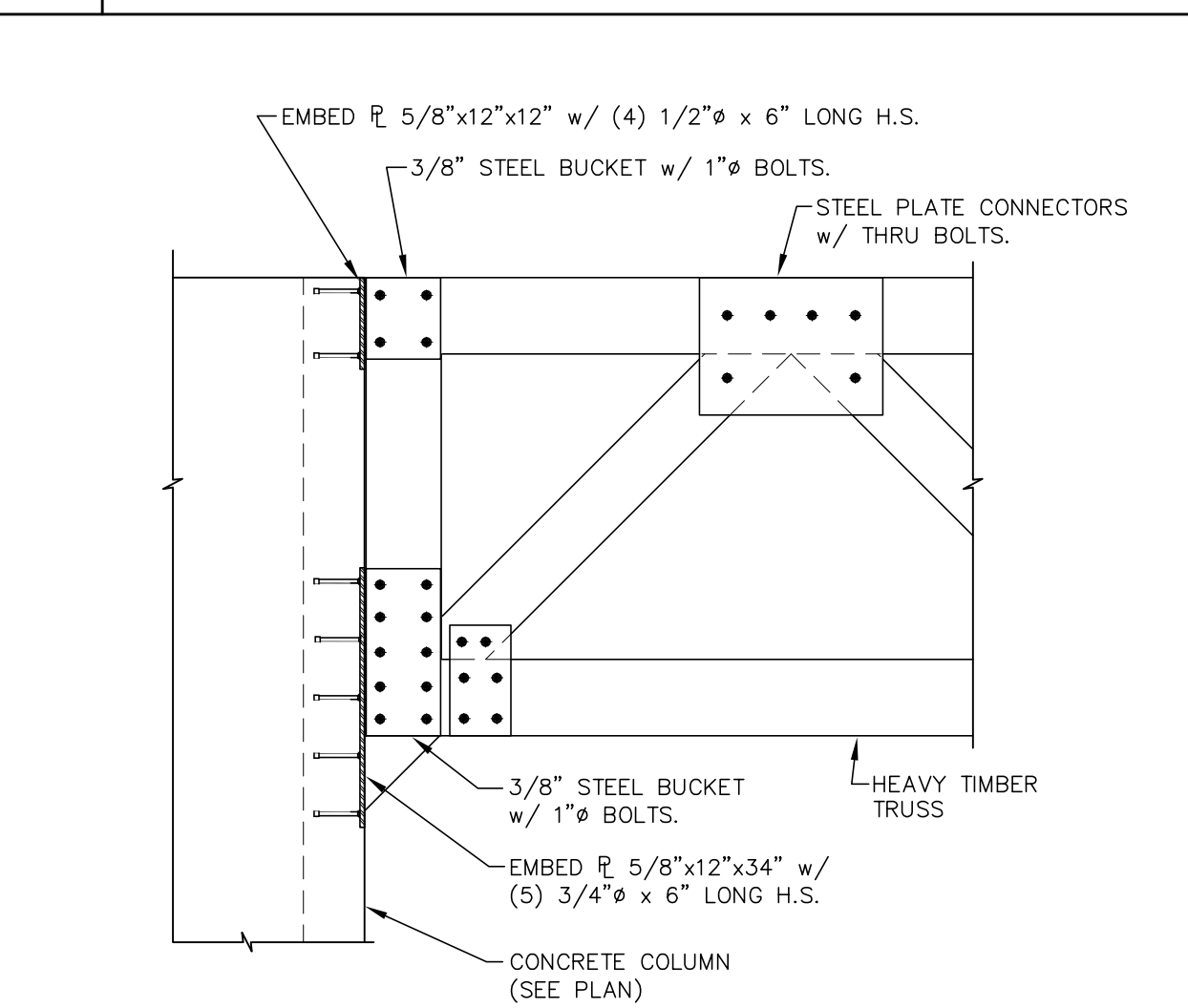
9 SECTION 3/4" = 1'-0"



1 SECTION 3/4" = 1'-0"



2 SECTION 3/4" = 1'-0"



4 SECTION 1/2" = 1'-0"

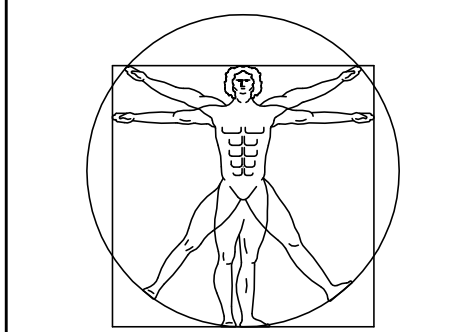
NOT FOR CONSTRUCTION

THESE ARE PROGRESS DRAWINGS, THEREFORE THEY ARE ISSUED PRIOR TO COMPLETION OF THE STRUCTURAL DESIGN, AND OTHER DESIGN DISCIPLINES, INCLUDING BUT NOT LIMITED TO ARCHITECTURAL OR MECHANICAL DESIGNS; AND AS SUCH, ARE INCOMPLETE BY NATURE FOR THE COMPREHENSIVE SCOPE OF THE PROJECT. ALLOWANCES FOR STRUCTURAL ELEMENTS REQUIRED DUE TO THE COMPLETION AND CROSS-COORDINATION OF ALL OTHER DISCIPLINES SHOULD BE MADE.



**ONM&J**  
O'Donnell, Naccarato, Mignogna Jackson  
STRUCTURAL ENGINEERS  
321 15TH STREET, SUITE 200  
WEST PALM BEACH, FLORIDA 33401  
(561) 835-9994 FAX (561) 835-8255  
LIC. #0004386  
JOB # 341.110

**REG**  
ARCHITECTS  
INTERIORS  
PLANNERS  
INCORPORATED



EST. 1988  
RICK GONZALEZ, A.I.A.  
PRESIDENT AR-0014172  
300 CLEMATIS STREET  
WEST PALM BEACH  
FLORIDA 33401  
PH: (561) 659-2383  
FAX: (561) 659-5546  
www.regarchitects.com

CORPORATION NUMBER  
AA-0002447

AMPHITHEATRE  
at  
COMMONS  
PARK

11600 POINCIANA BLVD.  
ROYAL PALM BEACH, FL 33411

REVISIONS	NO.
	1
	2
	3
	4

DATE 06-30-16

SCALE

DRAWN

CHECKED

REG No. 15048

© 2016

OWNERSHIP AND USE OF THESE DOCUMENTS & SPECIFICATIONS AS INSTRUMENTS OF SERVICE ARE AND SHALL REMAIN THE PROPERTY OF THE ARCHITECT. WHETHER THE PROJECT THEY ARE MADE FOR IS EXECUTED OR NOT, THEY SHALL NOT BE USED BY THE OWNER OR OTHERS ON OTHER PROJECTS OR FOR ADDITIONS TO THIS PROJECT BY OTHERS, EXCEPT BY AGREEMENT IN WRITING AND WITH APPROPRIATE COMPENSATION TO THE ARCHITECT.

S-4

Structural Drawing Updated  
Based on Architectural Backgrounds Dated 7-20-16