

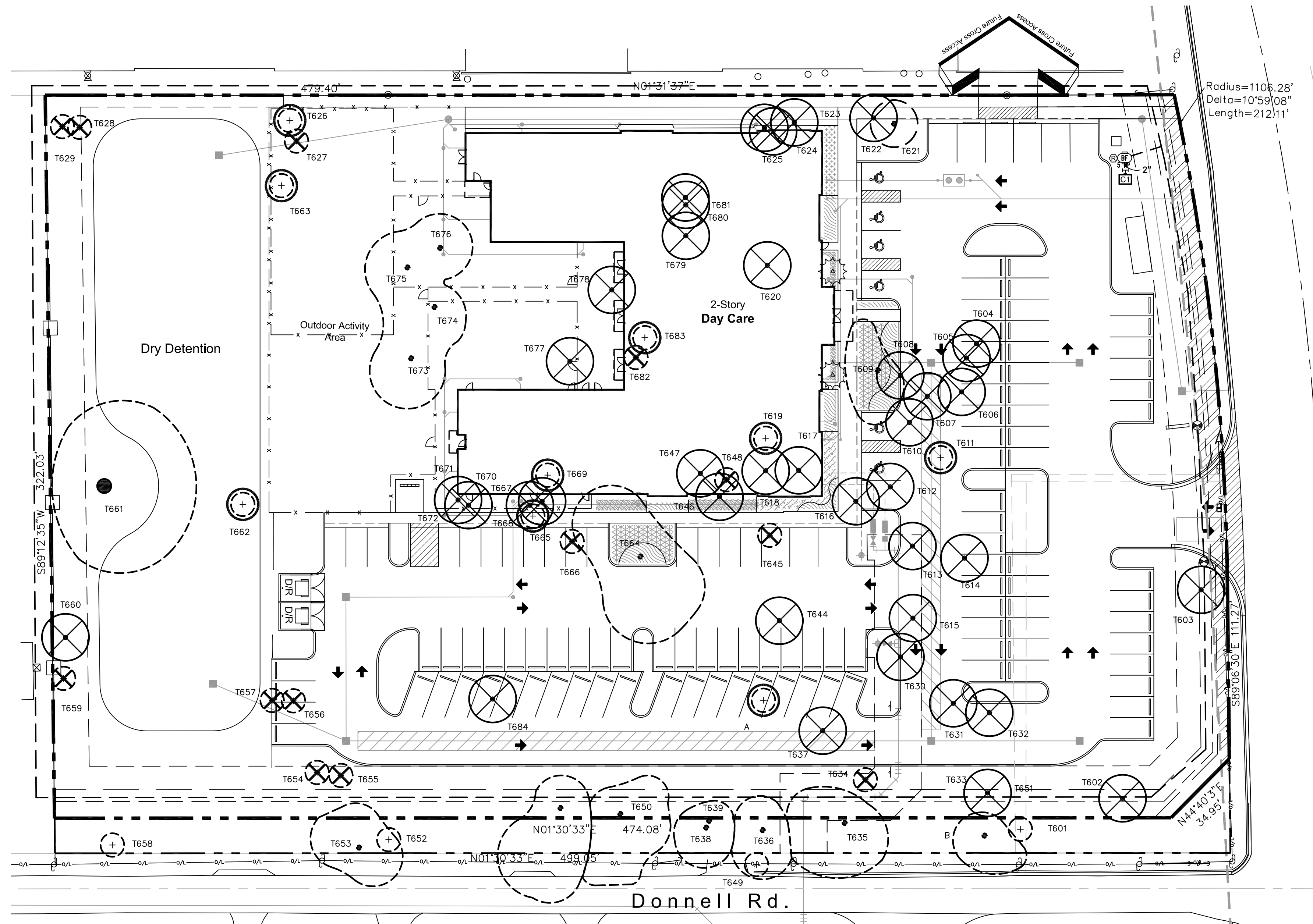
Jon E. Schmidt and Associates
Landscape Architecture & Site Planning
2247 Palm Beach Lakes Blvd., Suite 101
West Palm Beach, Florida 33409
Tel. (561) 684-6141 • Fax. (561) 684-6142
E-mail: jschmidt@jesla.com
Website: www.jesla.com
License No.: LC26000232

Opportunity Inc. Early Learning Center

Palm Beach County, Florida

Tree List

ID	DBH	SPECIES (*Native)	DISPOSITION	MITIGATION REQUIRED	ON-SITE MIT. PROVIDED	OFF-SITE MIT. PROVIDED
A	20' CT	Sabal Palm*	Transplant on Site	N/A	N/A	N/A
B	6"	Multi-Trunk Orchid Tree	Preserve	N/A	N/A	N/A
T601	3' CT	Sabal Palm*	Preserve	N/A	N/A	N/A
T602	10"	Ackee Tree	Remove	0	0	0
T603	14"	Mango	Remove	0	0	0
T604	10"	Unknown Shade Tree	Remove	0	0	0
T605	10"	Unknown Shade Tree	Remove	0	0	0
T606	14"	Banyan Tree*	Remove	3	0	3
T607	14"	Banyan Tree*	Remove	3	0	3
T608	6"	Banyan Tree*	Remove	1	0	1
T609	14"	Shaving Brush Tree	Preserve	N/A	N/A	N/A
T610	10"	Java Plum	Remove	0	0	0
T611	20' CT	Sabal Palm*	Transplant on Site	N/A	N/A	N/A
T612	4"	Lychee Tree	Remove	0	0	0
T613	8"	Carabola	Remove	0	0	0
T614	8"	Mango	Remove	0	0	0
T615	8"	Sapodilla	Remove	0	0	0
T616	36"	Native Stranger Fig*	Remove	7	0	7
T617	14"	Mango	Remove	0	0	0
T618	8"	Cassia	Remove	0	0	0
T619	18' CT	Sabal Palm*	Transplant on Site	N/A	N/A	N/A
T620	20"	Lychee Tree	Remove	0	0	0
T621	14"	Candlewood Tree	Preserve	N/A	N/A	N/A
T622	14"	Gumbo Limbo*	Remove	3	0	3
T623	14"	Gumbo Limbo*	Remove	3	0	3
T624	16"	Gumbo Limbo*	Remove	3	0	3
T625	10"	Unknown Shade Tree	Remove	0	0	0
T626	20' CT	Sabal Palm*	Transplant on Site	N/A	N/A	N/A
T627	20' CT	Queen Palm	Remove	0	0	0
T628	18' CT	Queen Palm	Remove	0	0	0
T629	18' CT	Queen Palm	Remove	0	0	0
T630	48"	Unknown Shade Tree	Remove	0	0	0
T631	10"	Lychee	Remove	0	0	0
T632	12"	Advocado	Remove	0	0	0
T633	4"	Multi-Trunk Lychee	Remove	0	0	0
T634	20' CT	Queen Palm	Remove	0	0	0
T635	20"	Oak*	Preserve	N/A	N/A	N/A
T636	18"	Oak*	Preserve	N/A	N/A	N/A
T637	10"	Multi-Trunk Cassia	Remove	0	0	0
T638	12"	Oak*	Preserve	N/A	N/A	N/A
T639	6"	Oak*	Preserve	N/A	N/A	N/A
T644	12"	Orchid Tree	Remove	0	0	0
T645	4"	Montgomery Palm	Remove	0	0	0
T646	10"	Jacaranda	Remove	0	0	0
T647	13"	Ficus	Remove	0	0	0
T648	4"	Areca Palm	Remove	0	0	0
T649	12' CT	Sabal Palm*	Preserve	N/A	N/A	N/A
T650	52"	Oak*	Preserve	N/A	N/A	N/A
T651	54"	Oak*	Preserve	N/A	N/A	N/A
T652	48"	Areca Palm	Preserve	N/A	N/A	N/A
T653	60"	Ficus	Preserve	N/A	N/A	N/A
T654	10' CT	Ponytail Palm	Remove	0	0	0
T655	5' CT	Ponytail Palm	Remove	0	0	0
T656	10' CT	Ponytail Palm	Remove	0	0	0
T657	10' CT	Ponytail Palm	Remove	0	0	0
T658	18' CT	Sabal Palm*	Preserve	N/A	N/A	N/A
T659	48"	Areca Palm	Remove	0	0	0
T660	12"	Native Stranger Fig*	Remove	3	0	3
T661	48"	Native Stranger Fig*	Preserve	N/A	N/A	N/A
T662	18' GW	Royal Palm*	Transplant on Site	N/A	N/A	N/A
T663	12' CT	Sabal Palm*	Transplant on Site	N/A	N/A	N/A
T664	40"	Oak*	Preserve	N/A	N/A	N/A
T665	18' CT	Sabal Palm*	Transplant on Site	N/A	N/A	N/A
T666	18' CT	Queen Palm	Remove	0	0	0
T667	8"	Oak*	Remove	2	2	0
T668	6"	Oak*	Remove	1	1	0
T669	4' CT	Sabal Palm	Transplant on Site	N/A	N/A	N/A
T670	5"	Multi-Trunk Oak*	Remove	1	0	1
T671	5"	Multi-Trunk Oak*	Remove	1	0	1
T672	48"	Multi-Trunk Oak*	Remove	8	0	8
T673	14"	Oak*	Preserve	N/A	N/A	N/A
T674	10"	Oak*	Preserve	N/A	N/A	N/A
T675	10"	Oak*	Preserve	N/A	N/A	N/A
T676	6"	Oak*	Preserve	N/A	N/A	N/A
T677	7"	Multi-Trunk Oak*	Remove	2	2	0
T678	6"	Oak*	Remove	1	1	0
T679	8"	Oak*	Remove	2	2	0
T680	4"	Oak*	Remove	1	1	0
T681	5"	Oak*	Remove	1	1	0
T682	20' CT	Coconut Palm	Remove	0	0	0
T683	18' CT	Sabal Palm*	Transplant on Site	N/A	N/A	N/A
T684	8"	Oak*	Remove	2	2	0
TOTAL MITIGATION REQUIRED				48	-	-
ON-SITE MITIGATION PROVIDED				-	12	-
OFF-SITE MITIGATION PROVIDED				-	-	36



Tree Protection Notes

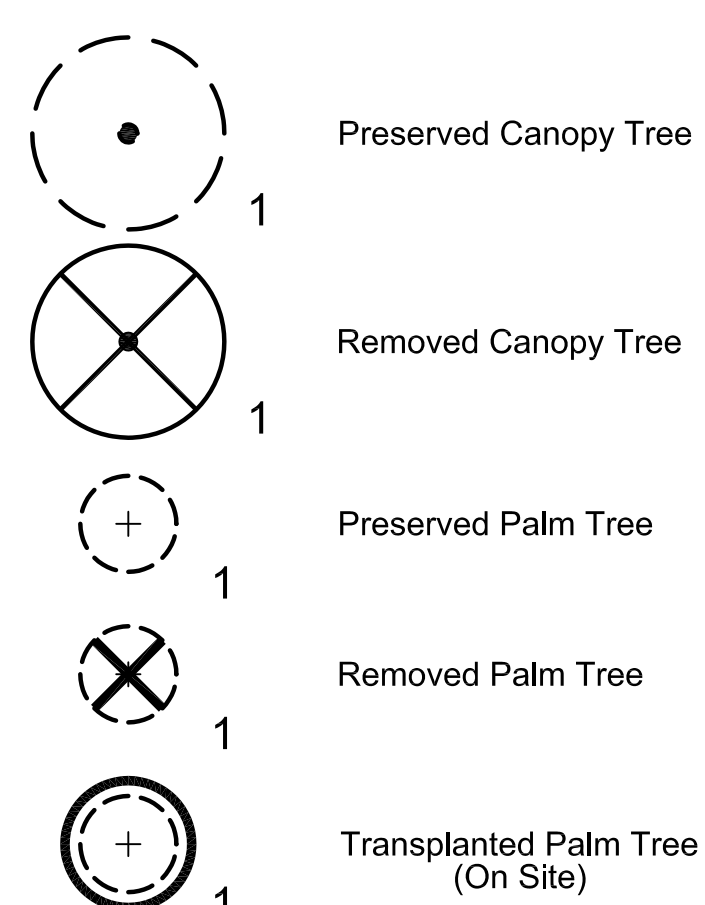
- Tree protection barriers shall be installed and in place prior to any other construction activity on site. Tree protection barriers shall remain in place throughout the construction of the project until removal is approved by Palm Beach County.
- During land altering and construction, protective barriers shall be erected and maintained around all trees or groups of trees to be protected. The movement of equipment or the storage of equipment, materials, and placement of debris or fill within protective barriers is prohibited.
- All trees to be preserved or transplanted on site must be tagged prior to any clearing activities take place on site.

Mitigation Requirements

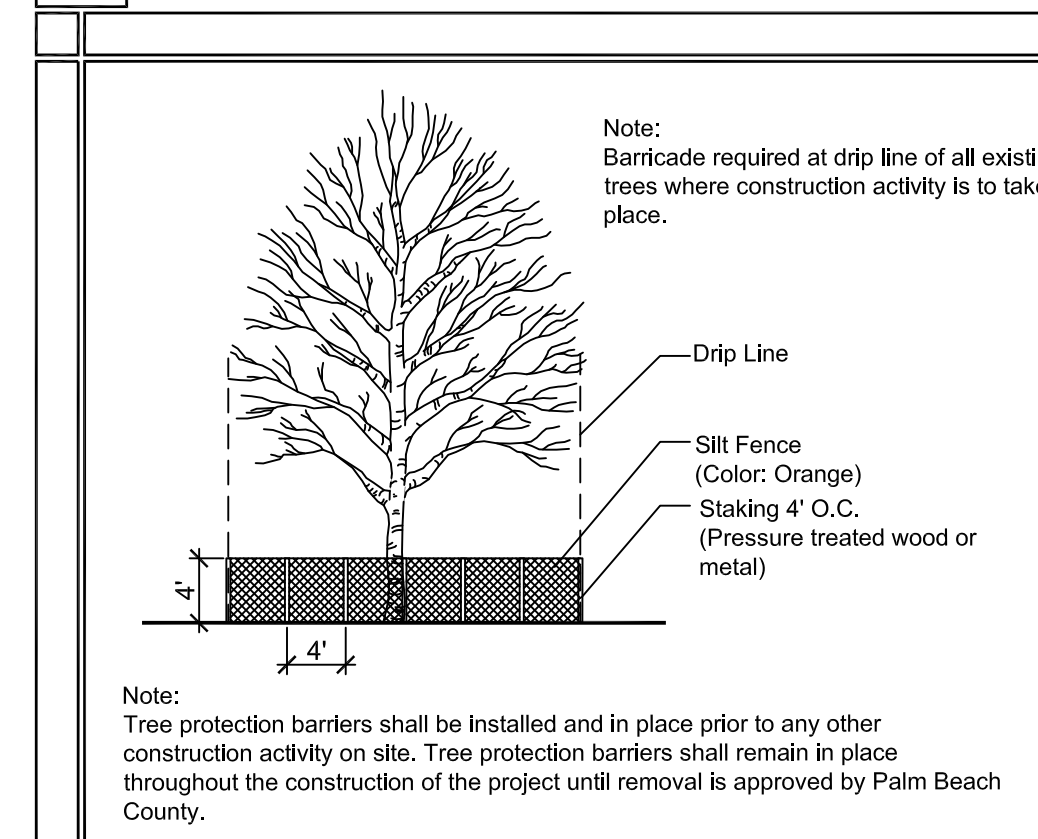
Crown Spread of Tree	Or	Diameter of Tree at 4.5 feet Above Grade	Credits	No. of Trees	Total Points
Less than 5 feet		Less than 2 inches	0	00	00
5-9 feet		2-6 inches	1	7	7
10-19 feet		7-11 inches	2	4	8
20-29 feet		12-16 inches	3	6	18
30-39 feet		17-21 inches	4	00	00
40-49 feet		22-26 inches	5	00	00
50-59 feet		27-31 inches	6	00	00
60-69 feet		32-36 inches	7	1	7
90 feet or greater		37 inches or more	8	1	8
			TOTAL POINTS	48	

*Mitigation is not required for trees less than 6" D.B.H.

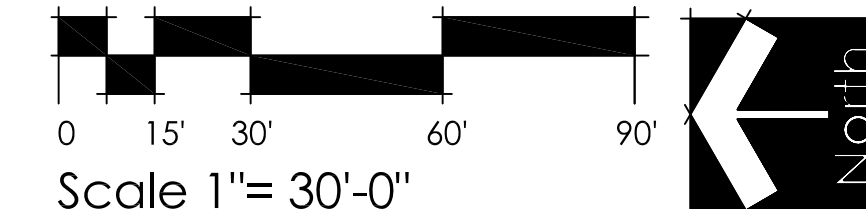
Tree Key



Tree Protection Detail



Know what's below.
Call before you dig.



Date: 10/07/15
Scale: 1" = 30'-0"
Design By: JES
Drawn By: JES
Checked By: JES
File No. 703.01
Job No. 14-47

REVISIONS / SUBMISSIONS

- 11/05/15 County Comments
- 11/12/15 DRO Resubmittal
- 02/02/16 CT on Palms
- 02/19/16 Removal Permit Submittal
- 03/04/16 Revise per ERM Comments
- 04/22/16 Revise per COA
- 09/19/16 Updated Civil

Tree Disposition Plan