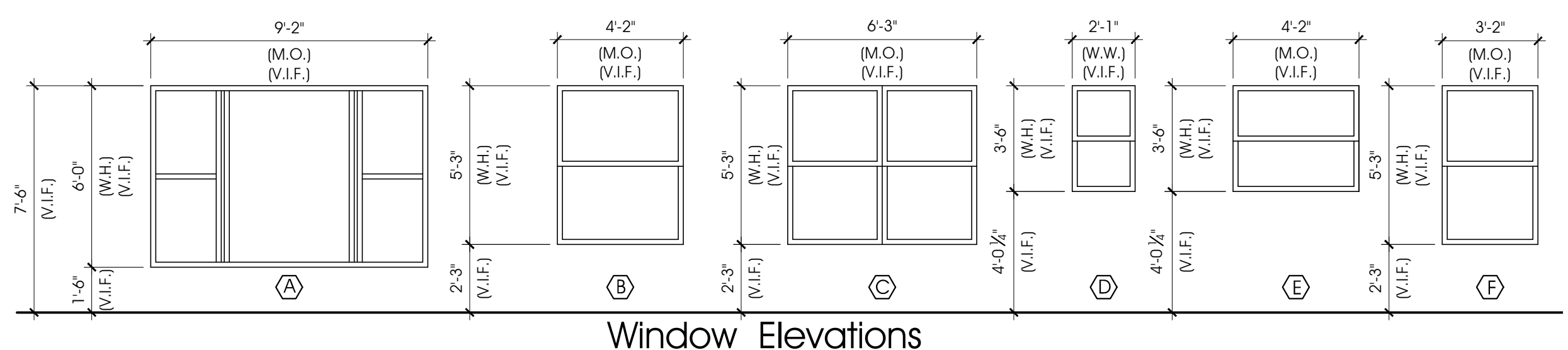


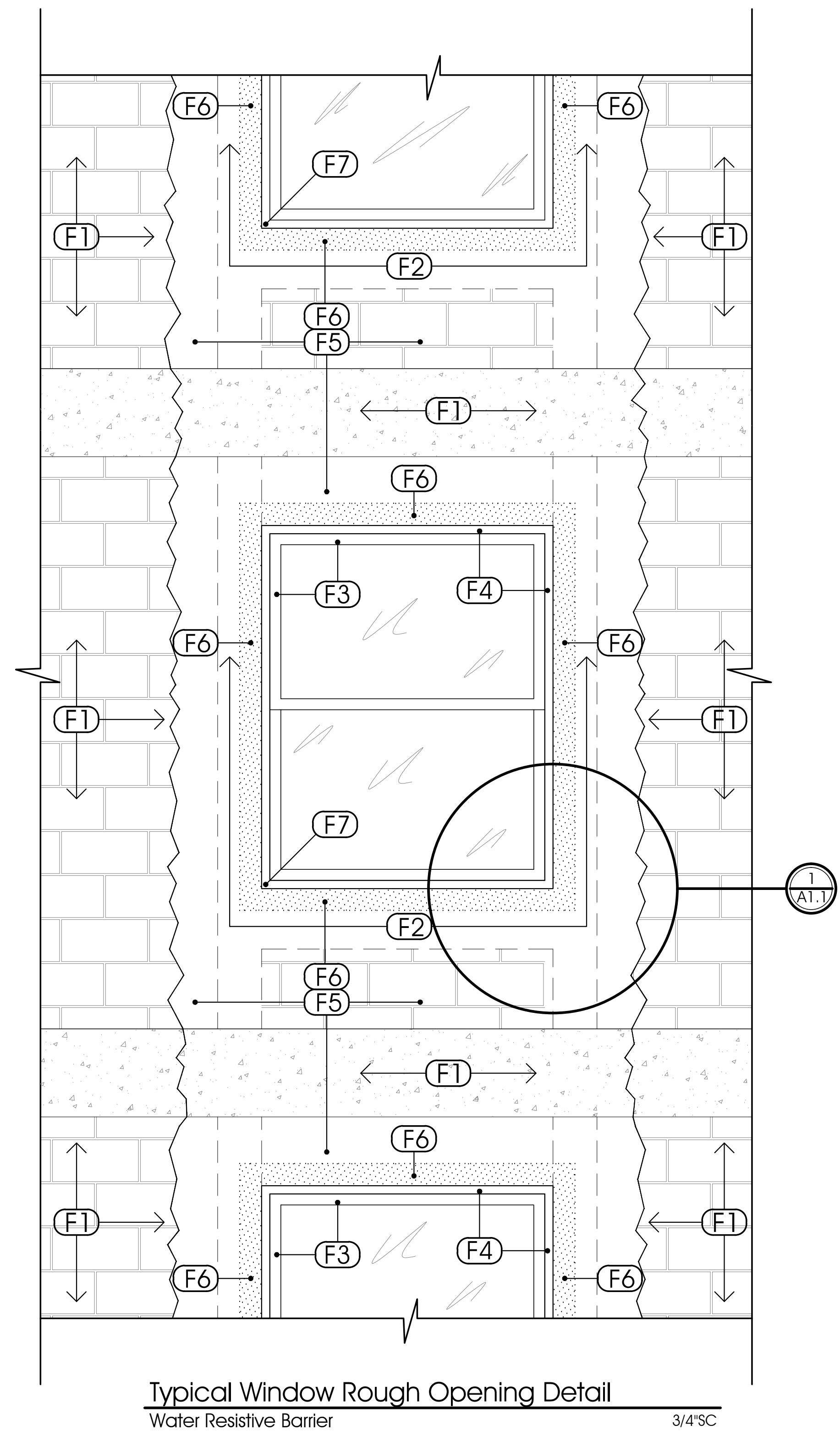
- WINDOW REPLACEMENT SPECIFICATIONS LIST:**
- (F1) Existing CMU Wall/ Concrete Beam/ Floor
 - (F2) Enhanced opening reinforced (See Detail)
 - (F3) Proposed Window Frame
 - (F4) P.T. Wood Buck per: NOA
 - (F5) Prostogo Cat-5 Air & Water Resistive Barrier
 - (F6) Fast Flash Liquid applied Flashing Membrane
 - (F7) Joint & Seam Filler
 - (F8) Stucco to match existing



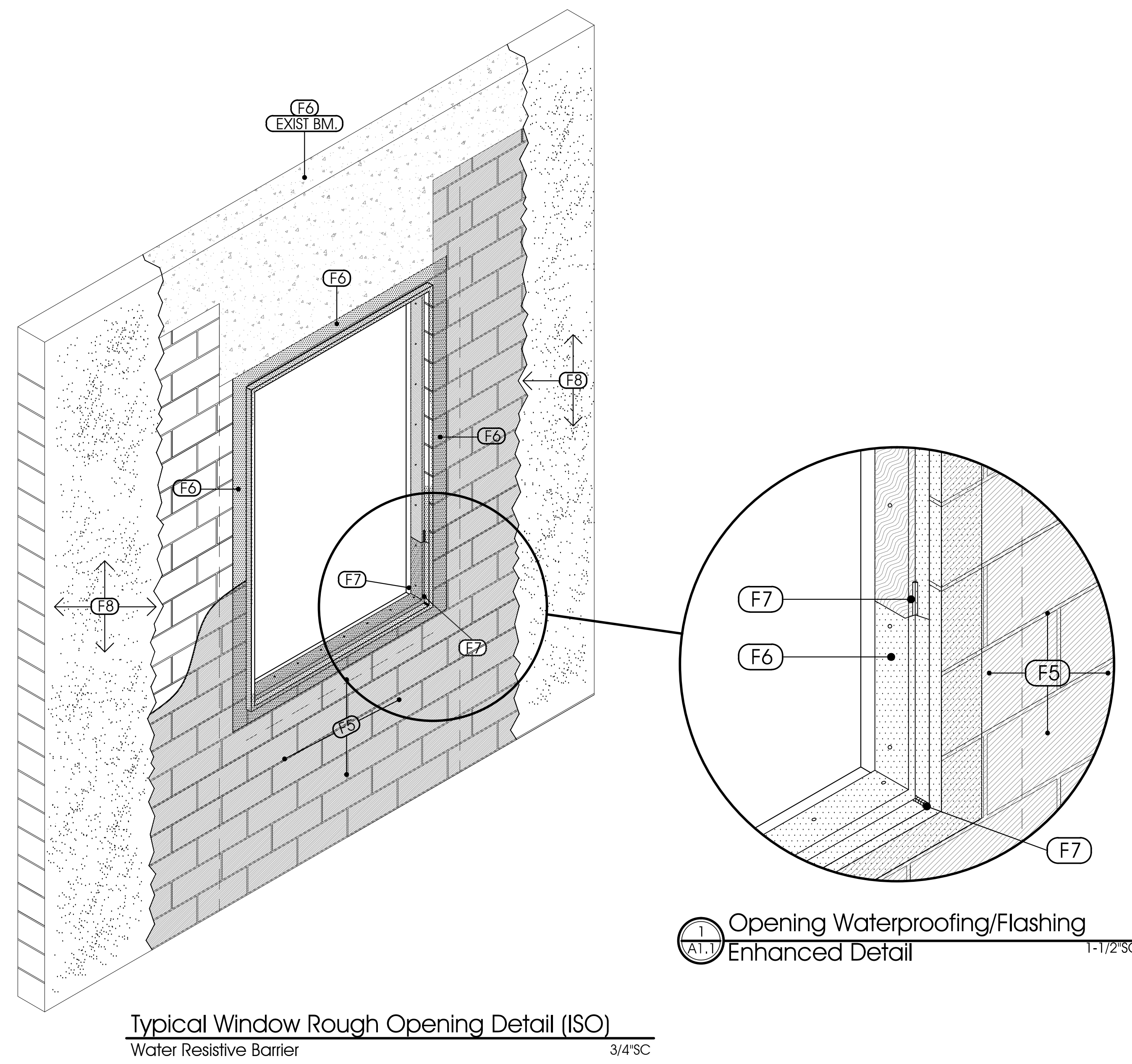
Window Elevations

MARK	SIZE	TYPE	GLASS		FRAME		TOP AFF	NOA req'd
			TINT	IMPACT	COLOR	MATERIAL		
(A)	See Elevations Window Size	Fixed Glass	GREY	YES	WHITE	Aluminum	Match Post-Opening	YES
(B)	"	Single Hung	GREY	YES	WHITE	Aluminum	"	YES
(C)	"	Single Hung	GREY	YES	WHITE	Aluminum	"	YES
(D)	"	Single Hung	GREY	YES	WHITE	Aluminum	"	YES
(E)	"	Single Hung	GREY	YES	WHITE	Aluminum	"	YES
(F)	"	Single Hung	GREY	YES	WHITE	Aluminum	"	YES

NOTE: ALL WINDOWS BASED ON PGT



Typical Window Rough Opening Detail
Water Resistive Barrier 3/4" SC



Typical Window Rough Opening Detail (ISO)
Water Resistive Barrier 3/4" SC

Opening Waterproofing/Flashing Enhanced Detail 1-1/2" SC

Date:
Mark Duckett,
P.E., S.I., S.E.S.C.
consulting Structural Engineer
3844 N.W. 43rd Terr.
Coconut Creek, FL.
FL Registration P.E. #45196
S.I. #1040

Bermuda High West
2150 S. Ocean Boulevard
Delray Beach, Florida
RBA PN: 11616.04

- Issued
- ⊙ : Permit Set
 - ⊙ : G.C. Bid Set
 - ⊙ : Owner Review
 - 9-15-16: Structural Review

ALL DESIGN, CONCEPTS, AND IDEAS CONTAINED AND REPRESENTED HEREIN ARE THE PROPERTY OF RICK BRAUTIGAN ARCHITECTURE, INC. AND MAY NOT BE ALTERED, CHANGED, MODIFIED OR COPIED WITHOUT THE PERMISSION OF RICK BRAUTIGAN ARCHITECTURE, INC. EXPRESSED IN WRITING.
1. DRAWINGS ARE NOT TO BE SCALED. WRITTEN DIMENSIONS HAVE PRECEDENCE OVER ALL SCALED DIMENSIONS. 2. CONTRACTOR TO VERIFY ALL DIMENSIONS AND ADVISE ARCHITECT OF ANY DISCREPANCIES. CONSTRUCTION SHALL NOT PROCEED UNTIL SAID DISCREPANCIES HAVE BEEN RESOLVED.
3. NO MATERIALS OR SYSTEMS ARE TO BE FABRICATED UNTIL: A) ALL DIMENSIONS HAVE BEEN VERIFIED BY CONTRACTOR B) SHOP DRAWINGS HAVE BEEN REVIEWED AND ACCEPTED BY THE ARCHITECT