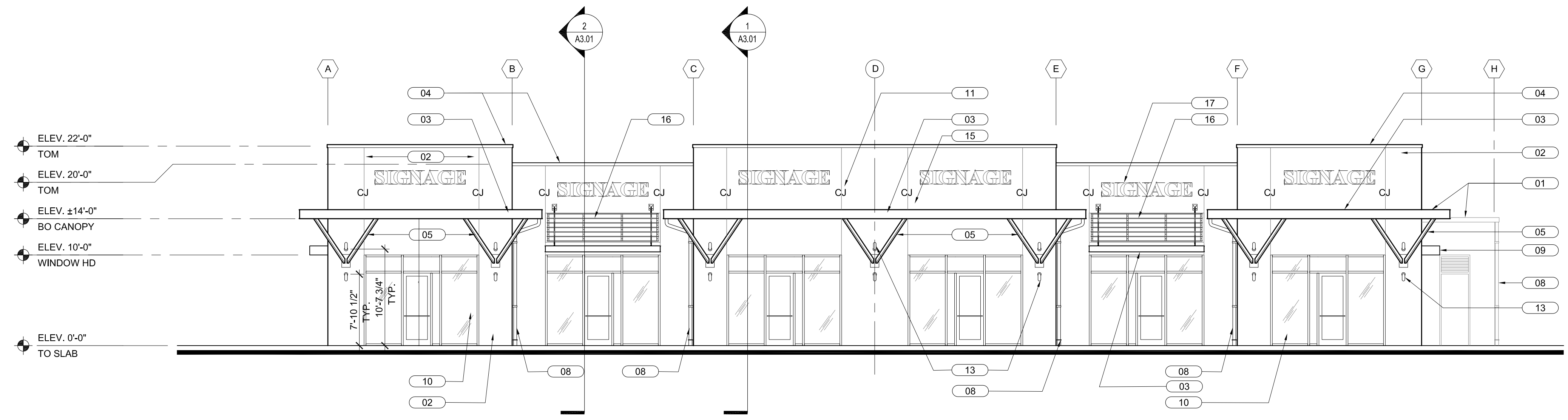


- CONNECT ALL DOWNSPOUTS TO UNDERGROUND STORM WATER SYSTEM. PROVIDE "SQUARE TO ROUND" CONNECTION BOOT.
- ALL COPING IS BY OTHERS UNDER SEPARATE PERMIT
- ALL COPING CORNERS TO BE SHOP FABRICATED, MITERED, WELDED AND GROUND SMOOTH. FOLDED AND RIVETED CORNERS WILL NOT BE ACCEPTED.

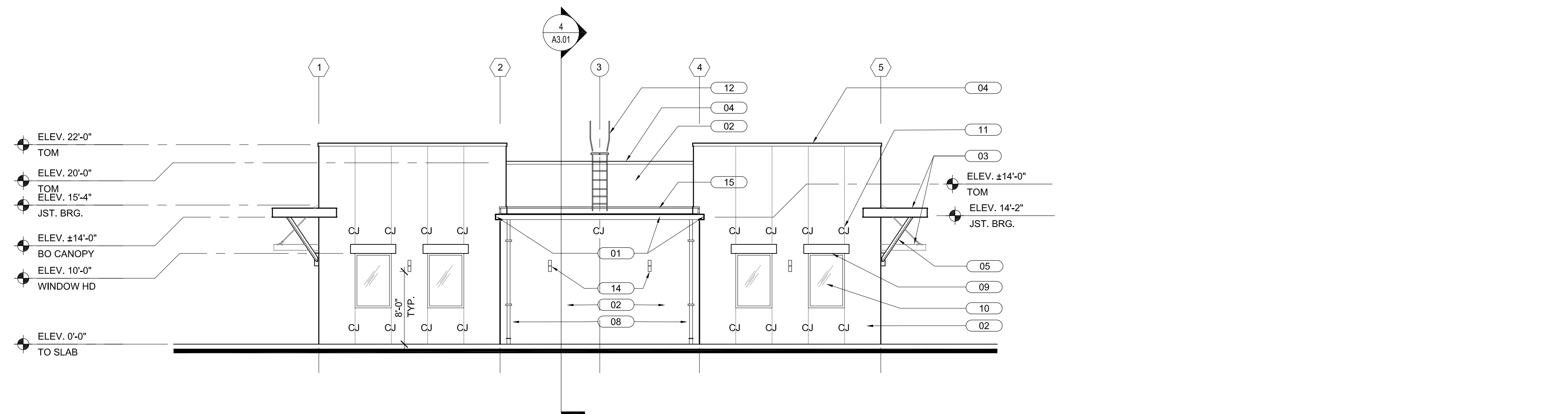
- 0.040" PRE-FINISHED ALUMINUM GUTTER. SEE DETAILS FOR MORE INFORMATION.
- STUCCO WITH SAND FINISH, PRIME & PAINT. TYPICAL FOR ENTIRE EXTERIOR FINISH U.O.N.
- PRE-ENGINEERED CANOPY SYSTEM. SEE DETAILS FOR MORE INFORMATION.
- 0.050" PRE-FINISHED ALUMINUM COPING WITH WIND CLIPS AT 18" O.C. MAX. SEE DETAILS FOR MORE INFORMATION.
- 3"x8" PRE-ENGINEERED ALUMINUM STRUCTURAL SUPPORT BRACE ASSEMBLY, PRIME & PAINT. SEE DETAIL 05/A3.11 AND STRUCTURAL DRAWINGS FOR MORE INFORMATION. TYPICAL.
- THRU WALL ROOF SCUPPER & 6"x6" 0.040" PRE-FINISHED ALUMINUM DOWNSPOUT
- BRONZE LAMBS TONGUE CONNECT TO 6"Ø OVERFLOW DRAIN
- 4"x4" 0.040" PRE-FINISHED ALUMINUM DOWNSPOUT
- PRE-ENGINEERED "BOXED AWNING LOUVER", TYPICAL
- ALUMINUM AND GLASS STOREFRONT SYSTEM, TYPICAL
- "C.J." REFERS TO STUCCO CONTROL JOINT, TYPICAL.
- LADDER, SEE DETAIL 05/A2.01 FOR MORE INFORMATION
- SURFACE MOUNTED WALL SCONCES, ONE POINTED UP AND ONE POINTED DOWN. SEE ELEVATIONS AND SECTIONS. TYPICAL. (SEE ELECTRICAL DRAWINGS)
- SURFACE MOUNTED WALL SCONCES, SEE ELEVATIONS AND SECTIONS. TYPICAL. (SEE ELECTRICAL DRAWINGS)
- LINE DENOTES FLASHING, SEE SECTIONS AND DETAILS FOR MORE INFORMATION, TYPICAL.
- PRE-ENGINEERED LOUVER. SEE 2/A3.11 FOR MORE INFORMATION.
- DASHED LINE DENOTES AREA OF PROPOSED SIGNAGE (0.75 SF / LF OF FRONTAGE). SIGNAGE BY OTHERS UNDER SEPARATE PERMIT

GENERAL NOTES

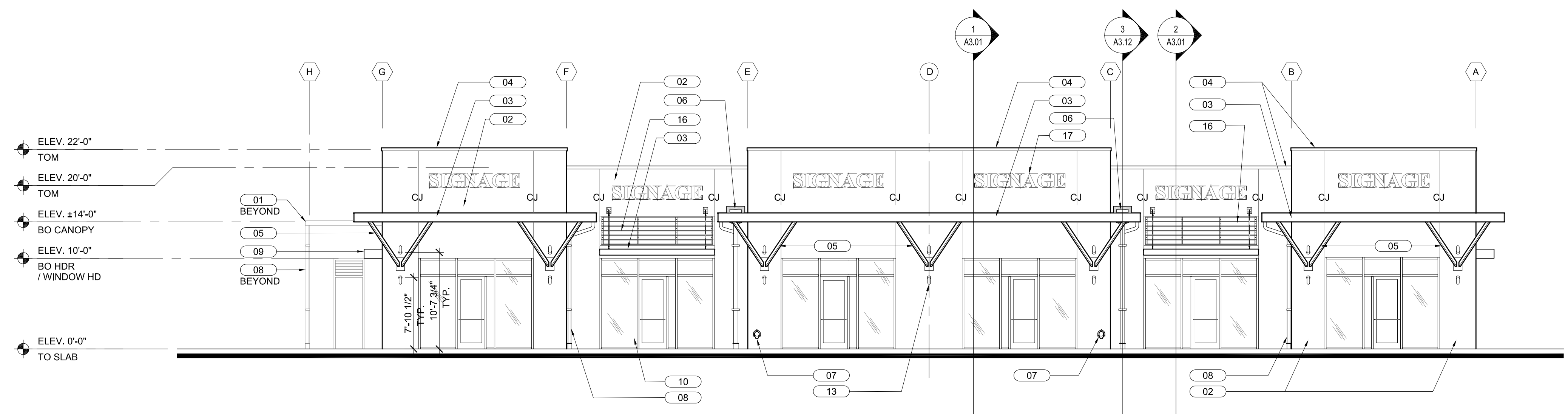
KEY NOTES (XX) REFERENCED BY THIS SYMBOL



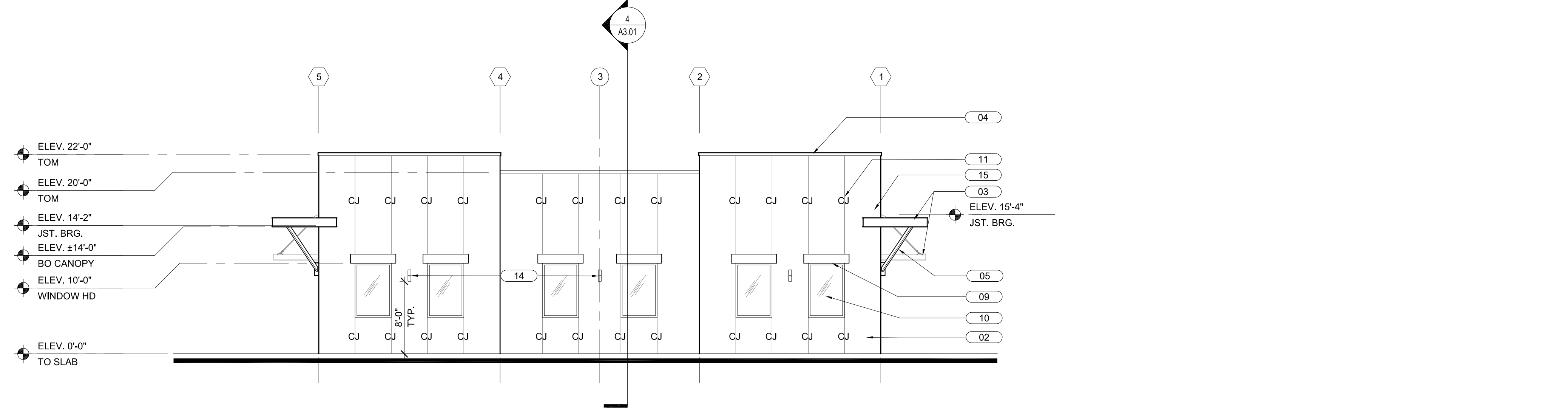
WEST ELEVATION SCALE 1/8" = 1'-0" 4



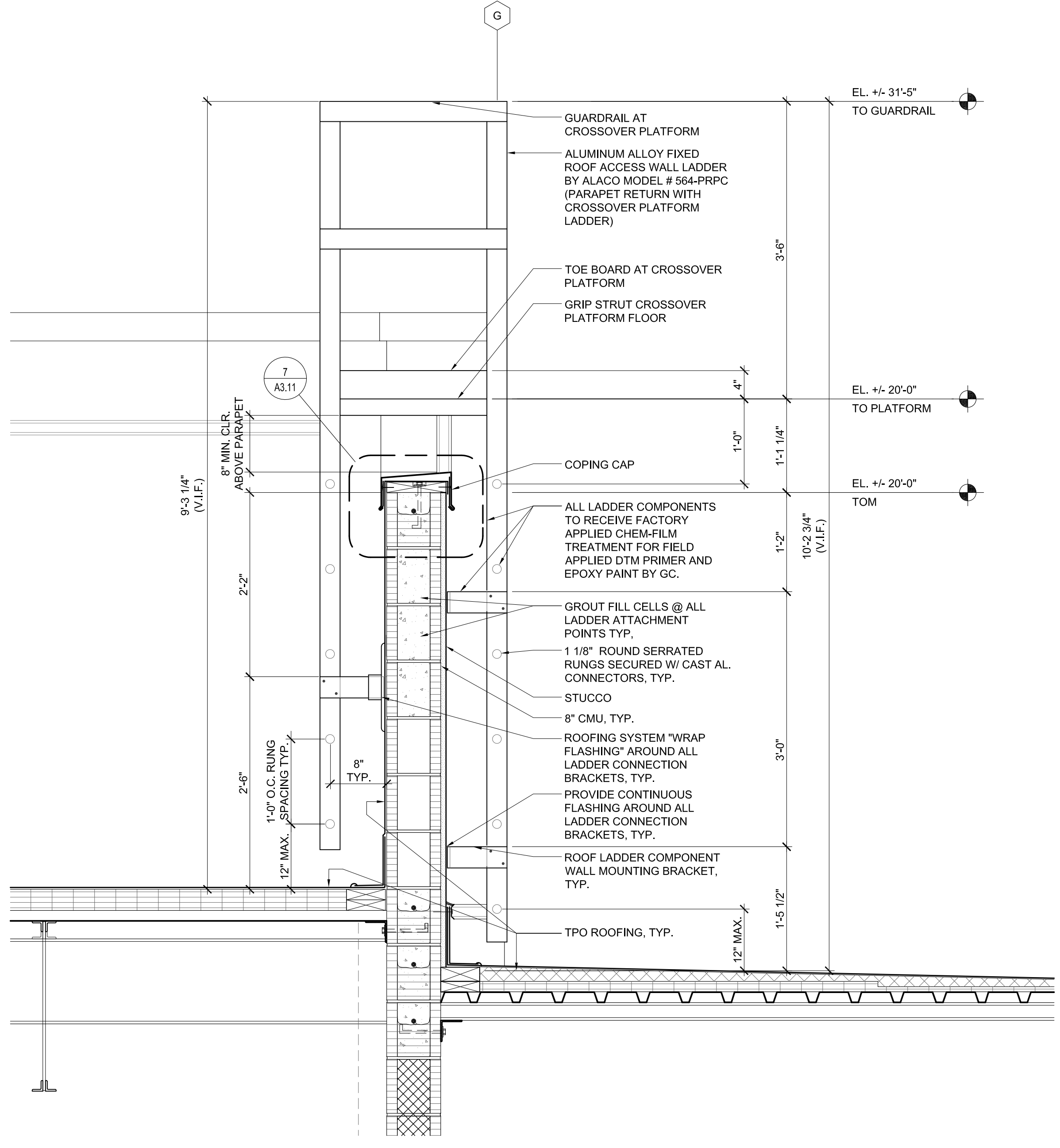
SOUTH ELEVATION SCALE 1/8" = 1'-0" 3



EAST ELEVATION SCALE 1/8" = 1'-0" 2



NORTH ELEVATION SCALE 1/8" = 1'-0" 1



SECTION DETAIL SCALE 1" = 1'-0" 5

BULLETIN LOG




**WESTLAKE AUXILIARY SALES CENTER**  
 CITY OF WESTLAKE  
 PALM BEACH COUNTY, FLORIDA

ISSUE DATE: - 09-30-16  
 ISSUED FOR:  
 PERMIT - BUILDING SHELL ONLY  
 © AS DATED ARCHITECTURE PLUS INTERNATIONAL, INC.

REVISION LOG


STATE REGISTRATIONS  
 FL #AAC001935 NC #8581  
 SC #6109 GA #0079  
 TN #00102675

Juan F. Romero AIA License No. AR0007933  
TO THE BEST OF THE KNOWLEDGE OF THE ARCHITECT AND ENGINEER, SAID PLAN AND SPECIFICATIONS COMPLY WITH THE APPLICABLE MINIMUM BUILDING CODES AND THE APPLICABLE MINIMUM SAFETY STANDARDS.

**WESTLAKE AUXILIARY SALES CENTER**  
 PROJECT NAME  
**EXTERIOR ELEVATIONS / DETAILS**  
 SHEET NAME  
 PROJECT NUMBER: **2016.082**  
 DRAWN BY: **PC** CHECKED BY: **PC**  
 SCALE:  
**A2.01**  
 SHEET NUMBER