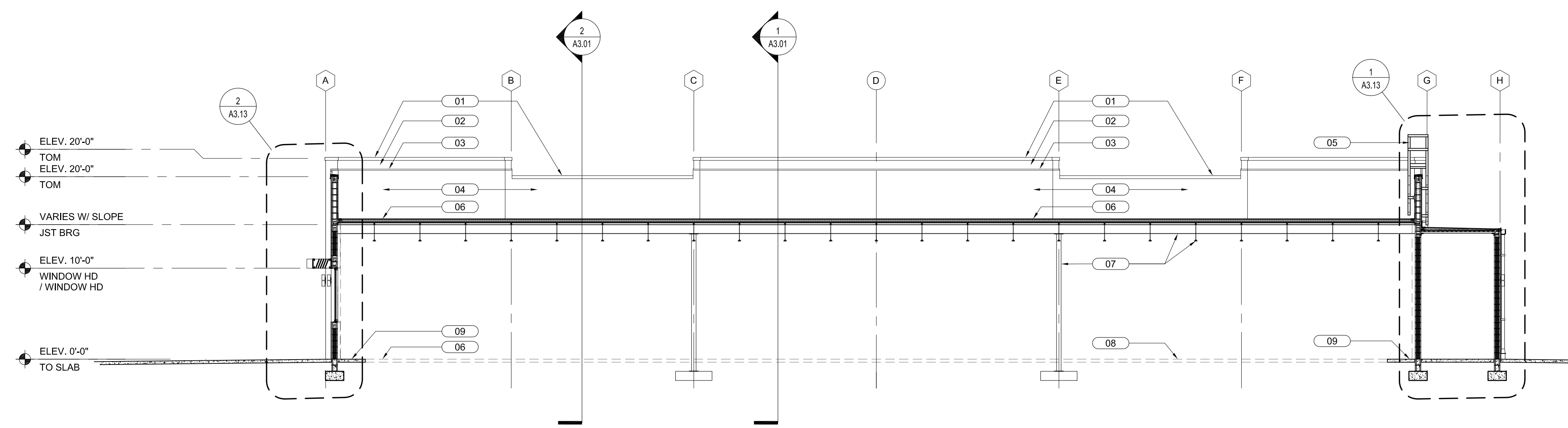


- 01 0.050" PRE-FINISHED ALUMINUM COPING WITH WIND CLIPS AT 18" O.C. MAX. SEE DETAILS FOR MORE INFORMATION.
- 02 STUCCO WITH SAND FINISH, PRIME & PAINT. TYPICAL AT ROOF SIDE OF HIGHER PARAPETS.
- 03 LINE DENOTES FLASHING. SEE SECTIONS AND DETAILS FOR MORE INFORMATION. TYPICAL
- 04 TPO ROOFING SYSTEM, RUN UP WALL TO FLASHING OR COPING AS INDICATED.
- 05 LADDER, SEE DETAIL 5/A2.01 FOR MORE INFORMATION
- 06 TPO ROOFING SYSTEM OVER R-19 RIGID INSULATION ON GALVANIZED METAL DECK. PROVIDE TAPERED INSULATION TO FORM CRICKETS AND SLOPE TO DRAIN AS INDICATED.
- 07 STRUCTURAL STEEL, SEE STRUCTURAL DRAWINGS, TYPICAL
- 08 DASHED LINE INDICATES SLAB TO BE POURED AT TIME OF TENANT BUILD OUT. POUR. INTERIOR TO REMAIN AS COMPACTED FILL.
- 09 4" CONCRETE SLAB ON 10 MIL VAPOR BARRIER ON COMPACTED, TERMITE TREATED FILL. SEE STRUCTURAL DRAWINGS.

GENERAL NOTES

KEY NOTES (XX) REFERENCED BY THIS SYMBOL



NORTH SOUTH SECTION LOOKING EAST

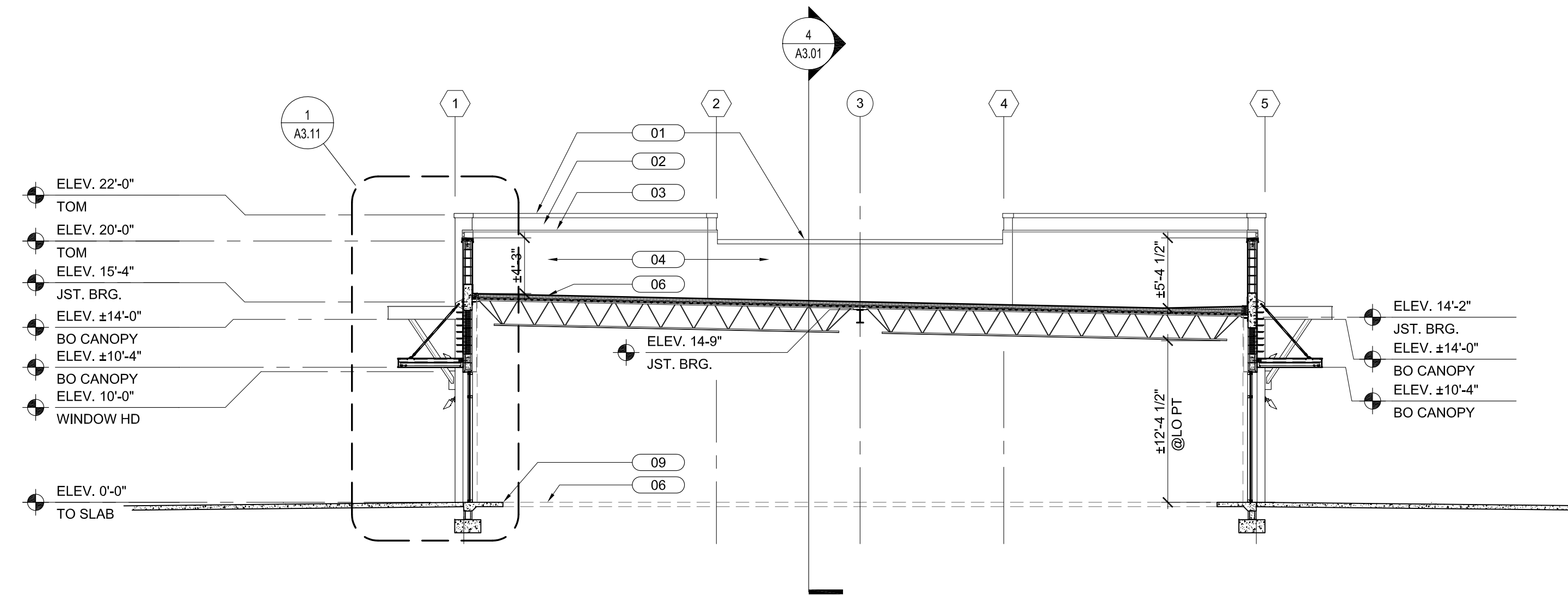
SCALE
1/8" = 1'-0"

4

NOT USED

SCALE
NA

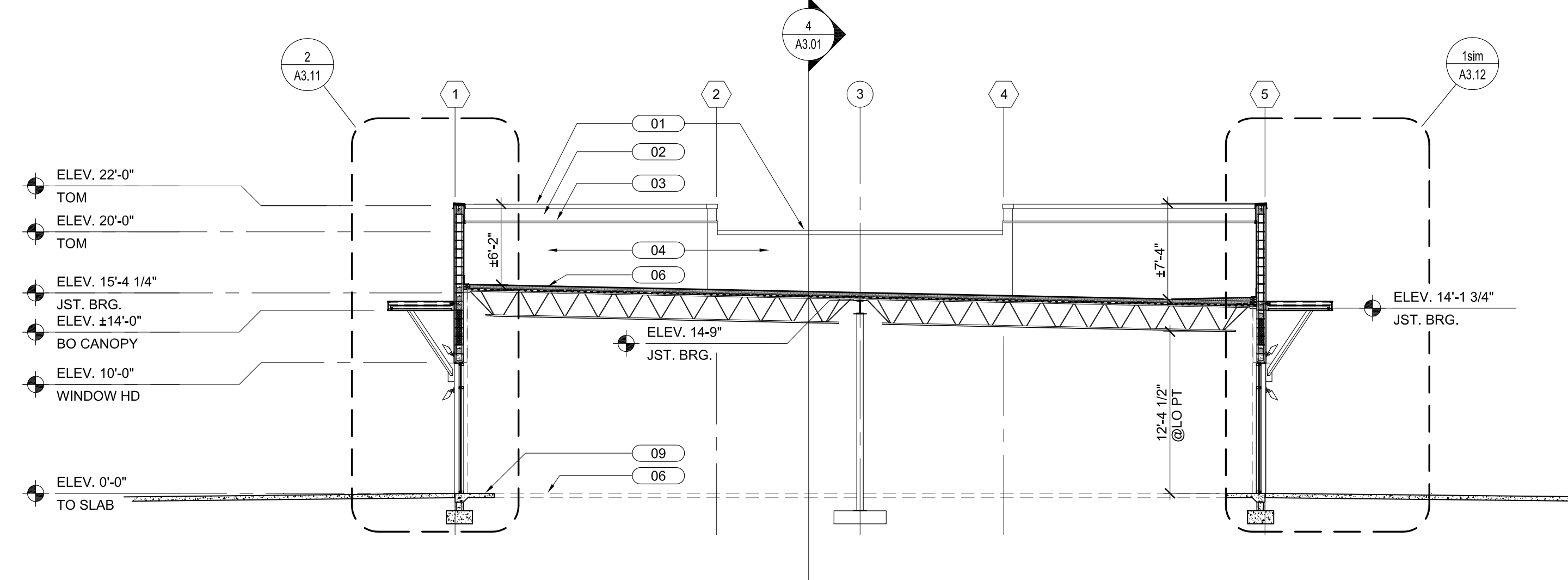
3



EAST WEST SECTION LOOKING NORTH

SCALE
1/8" = 1'-0"

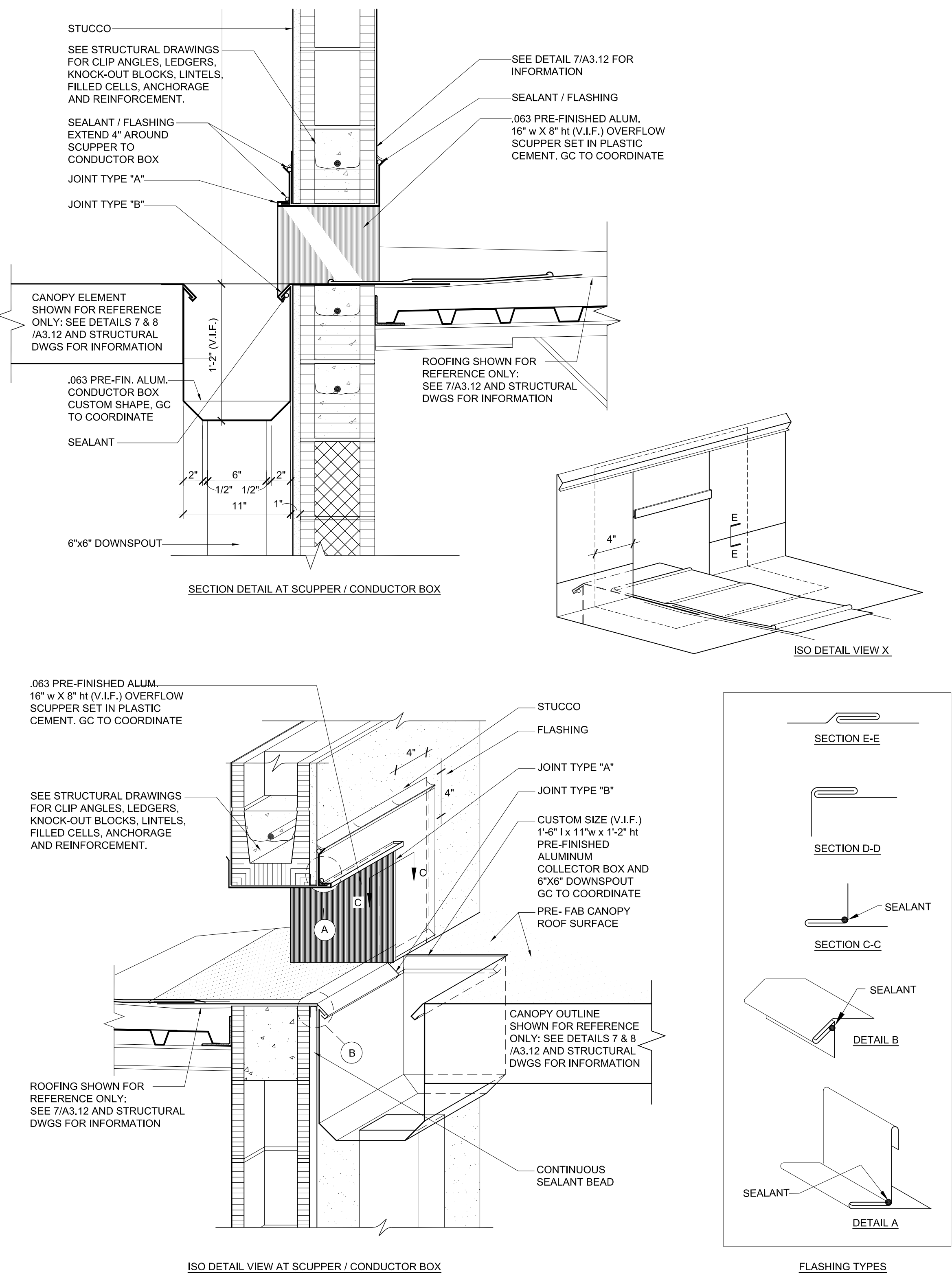
2



EAST WEST SECTION LOOKING NORTH

SCALE
1/8" = 1'-0"

1



SCUPPER DETAIL

SCALE
NA

5

REVISION LOG

| | |
|--|--|
| | |
| | |
| | |
| | |
| | |
| | |
| | |
| | |
| | |
| | |

STATE REGISTRATIONS

| | |
|---------------|-----------|
| FL #AAC001935 | NC #8581 |
| SC #6109 | GA #10079 |
| TN #00102675 | |

Juan F. Romero AIA License No. AR000793
TO THE BEST OF THE KNOWLEDGE OF THE ARCHITECTS AND ENGINEERS, SAID PLAN AND SPECIFICATIONS COMPLY WITH THE APPLICABLE MINIMUM BUILDING CODES AND THE APPLICABLE MINIMUM SAFETY STANDARDS.