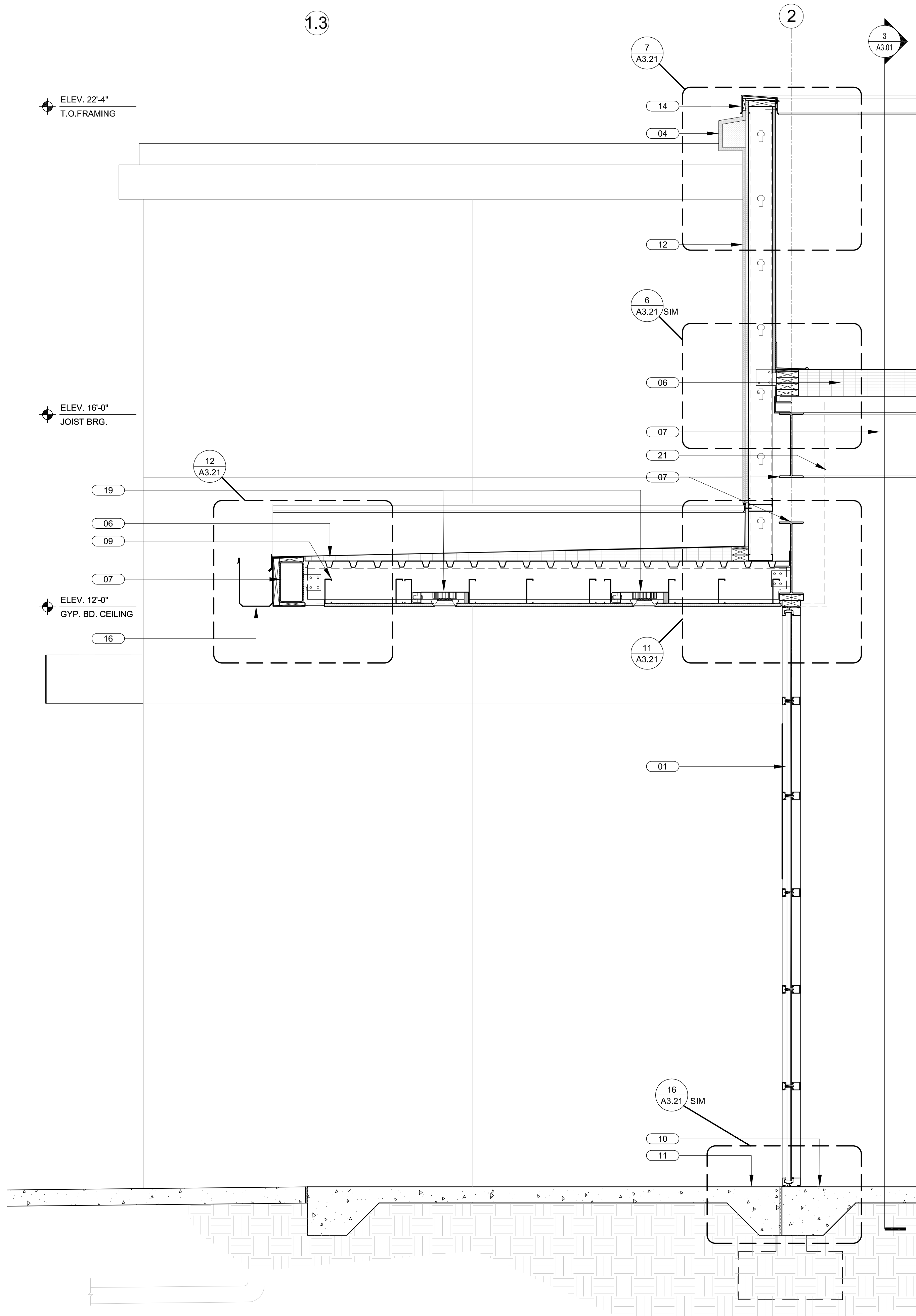


- KEYED NOTES**
- 01 CURTAIN WALL GLAZING SYSTEM BY "KAWNEER" OR EQUAL.
  - 02 10" KAWNEER VERTICAL LOUVERS ATTACHED TO PRIME/PAINTED 4x4 GALV. STEEL POSTS, TYPICAL.
  - 03 3/8" STUCCO ON GALV. P.B. MTL. LATH ON 15# FELT ON 8" CMU
  - 04 STUCCO ON FOAM TRIM ACCENT BAND
  - 05 PVC DOWNSPOUT CONCEALED IN BUTTRESS. CONNECT TO STORM DRAIN SYSTEM-SEE CIVIL DWG'S
  - 06 TPO ROOFING SYSTEM ON TAPERED INSULATION ON GALV. MTL. DECK
  - 07 STRUCTURAL BEAM-SEE STRUCT'L DWG'S
  - 08 CORBEL LEADING EDGE OF MASONRY BUTTRESS & FORM GROUT AS SHOWN

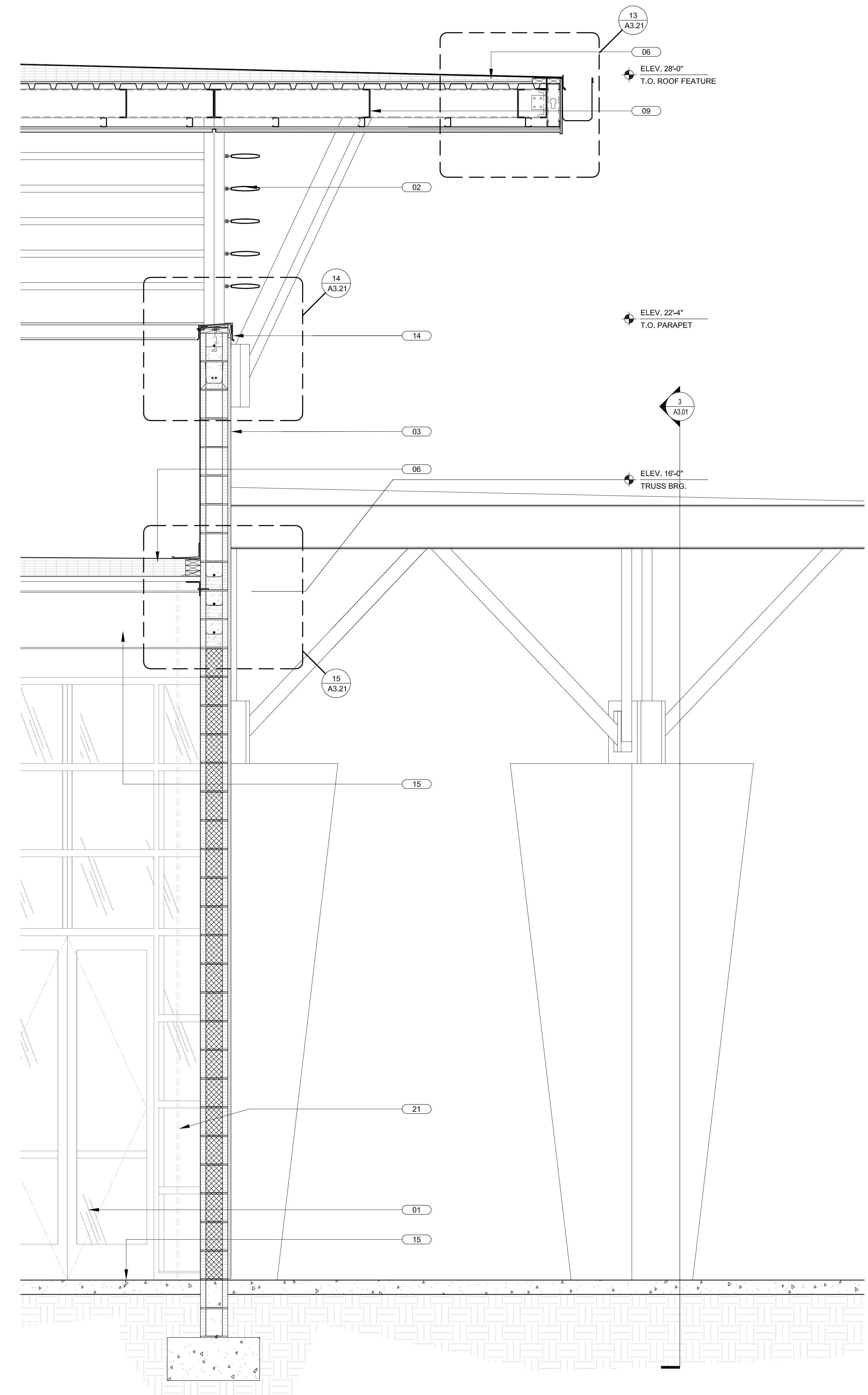
- 09 METAL STUD JOIST FRAMING-SEE STRUCT'L DWG'S
- 10 SCHED. FLOOR FINISH ON REINF. CONC. SLAB-SEE STRUCT'L DWG'S
- 11 PAVERS / CONC. WALKWAY-SEE CIVIL DWG'S
- 12 3/8" STUCCO ON GALV. P.B. MTL. LATH ON 15# FELT ON 7" DENSGLOSS GOLD SHEATHING
- 13 STUCCO BUTTRESS BEYOND
- 14 PRE-MFG'D ANOD. ALUMINUM COPING CAP W/ P.T. NAILER
- 15 PRE-ENGINEERED STEEL ROOF TRUSS-SEE STRUCTURAL DRAWINGS
- 16 0.040" PRE-FINISHED ALUMINUM GUTTER. SEE DETAILS FOR MORE INFORMATION.

- 17 PRE-ENGINEERED GALV. PAINTED MTL. CANOPY (BY OTHERS)
- 18 SURFACE MOUNTED WALL SCONCE. PROVIDE JBOX-SEE ELEVATIONS AND SECTIONS. TYPICAL (SEE ELECTRICAL DRAWINGS)
- 19 EXTERIOR LED SOFFIT LIGHT FIXTURE TYPICAL-SEE ELECTRICAL DRAWINGS
- 20 SEE STRUCTURAL DRAWINGS FOR FOUNDATIONS, CLIP ANGLES, LEDGERS, KNOCK-OUT BLOCKS, LINTELS, FILLED CELLS, ANCHORAGE AND REINFORCEMENT.
- 21 DASHED LINE AT INTERIOR OF EXTERIOR WALL DENOTES FUTURE 5/8" GWB ON 6" GALV. METAL STUD FURRING WITH 5-1/2" BATT INSULATION (R-19 NOMINAL) TO BE INSTALLED AS PART OF TENANT BUILD-OUT (N.I.C. FOR SHELL CONTRACT), TYPICAL
- 22 3"x8" PRE-ENGINEERED ALUMINUM STRUCTURAL SUPPORT BRACE ASSEMBLY, PRIME & PAINT. SEE DETAIL 3/A3.13 & STRUCTURAL DRAWINGS FOR MORE INFORMATION, TYPICAL.

**KEY NOTES** SCALE NTS **4**



**WALL SECTION** SCALE 3/4" = 1'-0" **2**



**WALL SECTION** SCALE 3/4" = 1'-0" **1**

**api+**  
 2709 Rocky Point Dr. 201 T 813 + 281 9299  
 Tampa, Florida 33607 USA F 813 + 281 9292  
 License No AAC001935 **apiplus.com**



**WESTLAKE VISITOR CENTER**  
 CITY OF WESTLAKE  
 PALM BEACH COUNTY, FLORIDA

ISSUE DATE: - 09-30-16  
 ISSUED FOR:  
**PERMIT - BUILDING SHELL ONLY**  
 ©AS DATED ARCHITECTURE PLUS INTERNATIONAL, INC.

REVISION LOG

STATE REGISTRATIONS  
 FL #AAC001935 NC #8581  
 SC #6109 GA #10079  
 TN #00102675

Juan F. Romero AIA License No. AP0007793  
TO THE BEST OF THE KNOWLEDGE OF THE ARCHITECT AND ENGINEER, THE DRAWINGS AND SPECIFICATIONS COMPLY WITH THE APPLICABLE MICHIGAN BUILDING CODES AND THE APPLICABLE MICHIGAN FIRE SAFETY STANDARDS.

**WESTLAKE VISITOR CENTER**  
 PROJECT NAME  
**WALL SECTIONS**  
 SHEET NAME  
 PROJECT NUMBER: **2016.037**  
 DRAWN BY: **DF/CV** CHECKED BY: **TM/PC**  
 SCALE  
**A3.12**  
 SHEET NUMBER