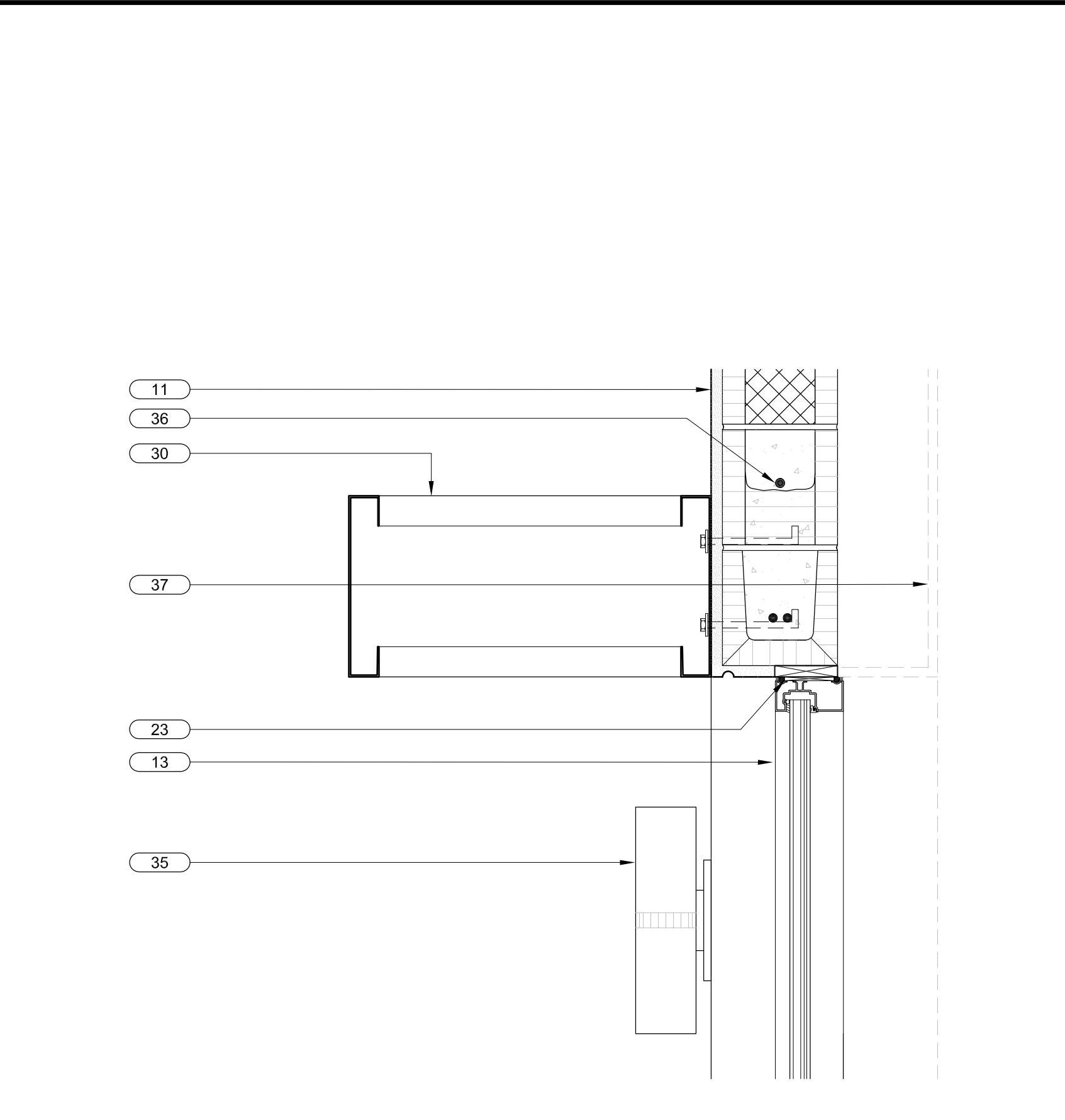


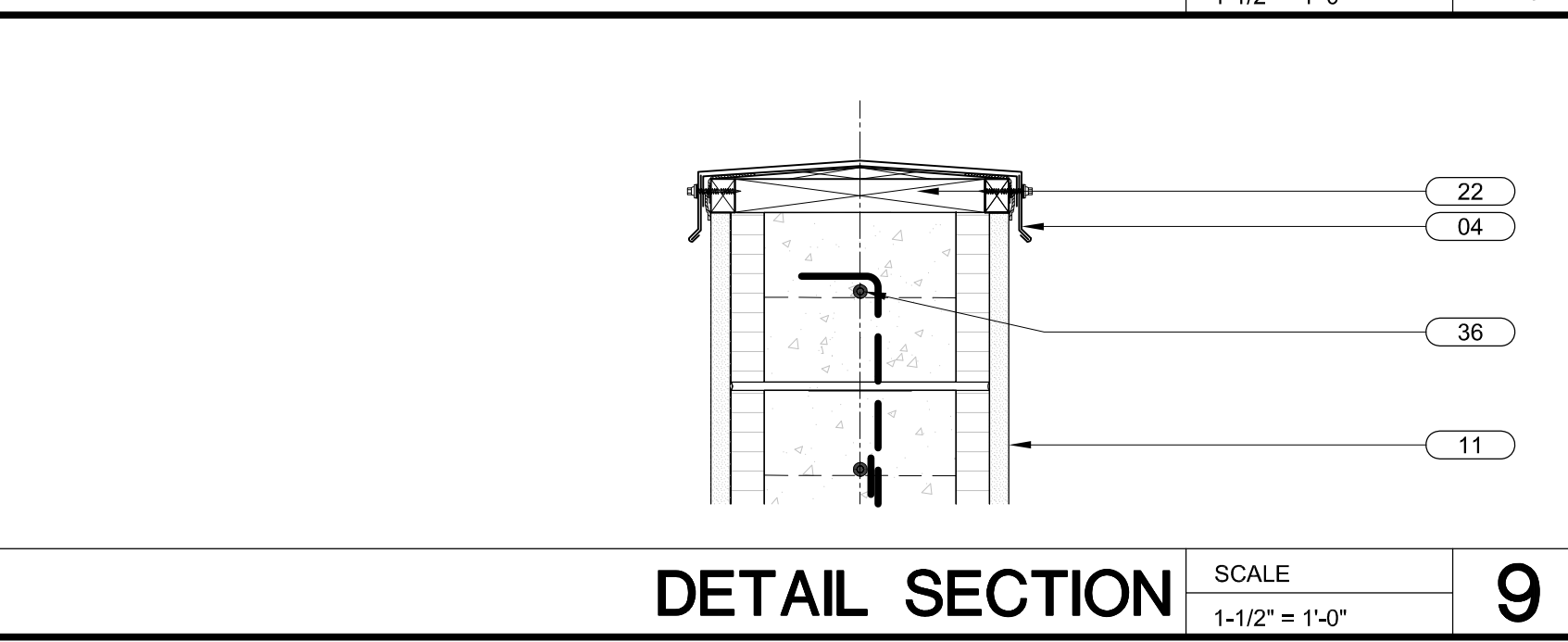
- 01 TPO ROOFING SYSTEM OVER R-19 RIGID INSULATION ON GALVANIZED METAL DECK. PROVIDE TAPERED INSULATION TO FORM CRICKETS AND SLOPE TO DRAIN AS INDICATED.
- 02 TPO ROOFING SYSTEM OVER FIBER BOARD ON SLEEPERS AS REQUIRED TO SLOPE ROOF AS INDICATED. SEE DETAILS FOR MORE INFORMATION. (NOT USED, THIS SHEET)
- 03 PRE-ENGINEERED CANOPY SYSTEM. SEE DETAILS FOR MORE INFORMATION.
- 04 0.050" PRE-FINISHED ALUMINUM COPING WITH WIND CLIPS AT 18" O.C. MAX. SEE DETAILS FOR MORE INFORMATION.
- 05 0.040" PRE-FINISHED ALUMINUM GUTTER. SEE DETAILS FOR MORE INFORMATION.
- 06 THRU WALL ROOF SCUPPER
- 07 OVERFLOW DRAIN, PRIME & PAINT STRAINER
- 08 3/8" STUCCO ON GALV. P.B. METAL LATH ON 15# FELT ON 3/4" "DENSGLASS GOLD" SHEATHING
- 09 STUCCO BUTTRESS BEYOND
- 10 ALL COPING CORNERS TO BE SHOP FABRICATED, MITERED, WELDED AND GROUND SMOOTH. FOLDED AND RIVETED CORNERS WILL NOT BE ACCEPTED. (NOT USED, THIS SHEET)
- 11 3/4" STUCCO ON GALV. P.B. MTL. LATH ON 15# FELT ON 8" CMU
- 12 "FOAM-IN" INSULATION (R-6 APPROXIMATE VALUE)
- 13 CURTAIN WALL GLAZING SYSTEM BY "KAWNEER" OR EQUAL
- 14 10" "KAWNEER VERSOLEIL" LOUVERS ATTACHED TO PAINTED 4X4 GALV. STEEL POSTS, TYPICAL
- 15 3/8" STUCCO ON FOAM TRIM ACCENT BAND-SLOPE TOP 1"
- 16 PVC DOWNSPOUT CONCEALED IN BUTTRESS. CONNECT TO STORM DRAIN SYSTEM BELOW GRADE-SEE CIVIL DRAWINGS
- 17 STRUCTURAL STEEL BEAM-SEE STRUCTURAL DRAWINGS
- 18 FRAMELESS TEMPERED GLASS WALL SYSTEM BY "ORL" OR EQUAL (NOT USED IN BUILDING SHELL PLANS)
- 19 METAL STUD JOIST FRAMING-SEE STRUCTURAL DRAWINGS
- 20 SCHEDULED FLOOR FINISH ON REINFORCED CONCRETE SLAB-SEE STRUCTURAL DRAWINGS
- 21 PAVERS / CONCRETE WALKWAY-SEE CIVIL DRAWINGS
- 22 2X P.T. WOOD BLOCKING AS REQUIRED
- 23 CONTINUOUS BACKER ROD & SEALANT
- 24 3/4" TYPE "X" GYP. BD. CEILING ON 6" METAL STUDS @ 16" O.C.
- 25 REINFORCED CONCRETE SLAB-SEE STRUCTURAL DRAWINGS
- 26 3/8" GALV. STEEL JOIST SEAT P W GALV. HEADED STUD EMBED ON REINFORCED GROUT FILLED TIE BEAM-SEE STRUCTURAL DRAWINGS
- 27 PRE-ENGINEERED STEEL ROOF TRUSS-SEE STRUCTURAL DRAWINGS
- 28 PRE-ENGINEERED REINFORCED CONCRETE LINTEL-SEE STRUCTURAL DRAWINGS
- 29 CONTINUOUS PRE-FINISHED ALUMINUM FLASHING
- 30 PRE-ENGINEERED AWNING
- 31 PRE-FINISH 0.02" ALUMINUM BREAK METAL ON 3/8" DENSGLASS SHEATHING
- 32 SOFFIT VENT W/ SCREEN
- 33 STUCCO CONTROL JOINT
- 34 ACT SYSTEM
- 35 EXTERIOR LIGHT
- 36 SEE STRUCTURAL DRAWINGS FOR CLIP ANGLES, LEDGERS, KNOCK-OUT BLOCKS, LINTELS, FILLED CELLS, ANCHORAGE AND REINFORCEMENT.
- 37 DASHED LINE AT INTERIOR OF EXTERIOR WALL DENOTES FUTURE 5/8" GWS ON 6" GALV. METAL STUD FURRING WITH 5-1/2" BATT INSULATION (R-19 NOMINAL), TO BE INSTALLED AS PART OF TENANT BUILD-OUT (N.I.C. FOR SHELL CONTRACT), TYPICAL
- 38 TUBE STEEL STRUCTURAL SUPPORT BRACKET ASSEMBLY, PRIME & PAINT. SEE DETAIL 6/A3.11 AND STRUCTURAL DRAWINGS FOR MORE INFORMATION. TYPICAL
- 39 2X6 P.T. / T.&G. STAINED WD. SOFFIT ON 3/8" EXTERIOR GRADE PLYWOOD SHEATHING (STAIN COLOR TBD) ON 3/8" GALV. MTL. HAT CHANNELS @ 16" O.C.

**KEY NOTES** XX REFERENCED BY THIS SYMBOL

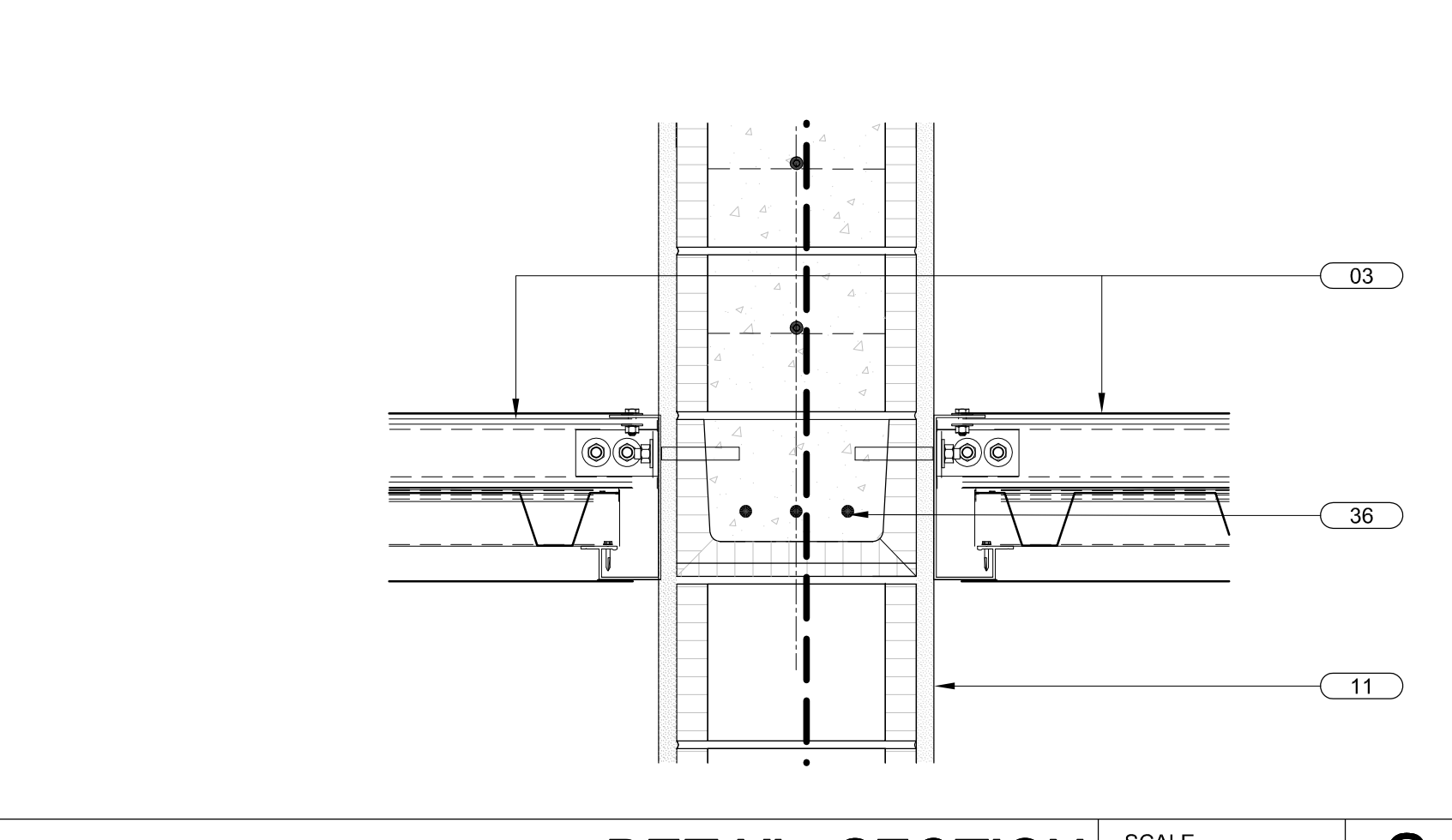
NOT USED SCALE NTS **11**



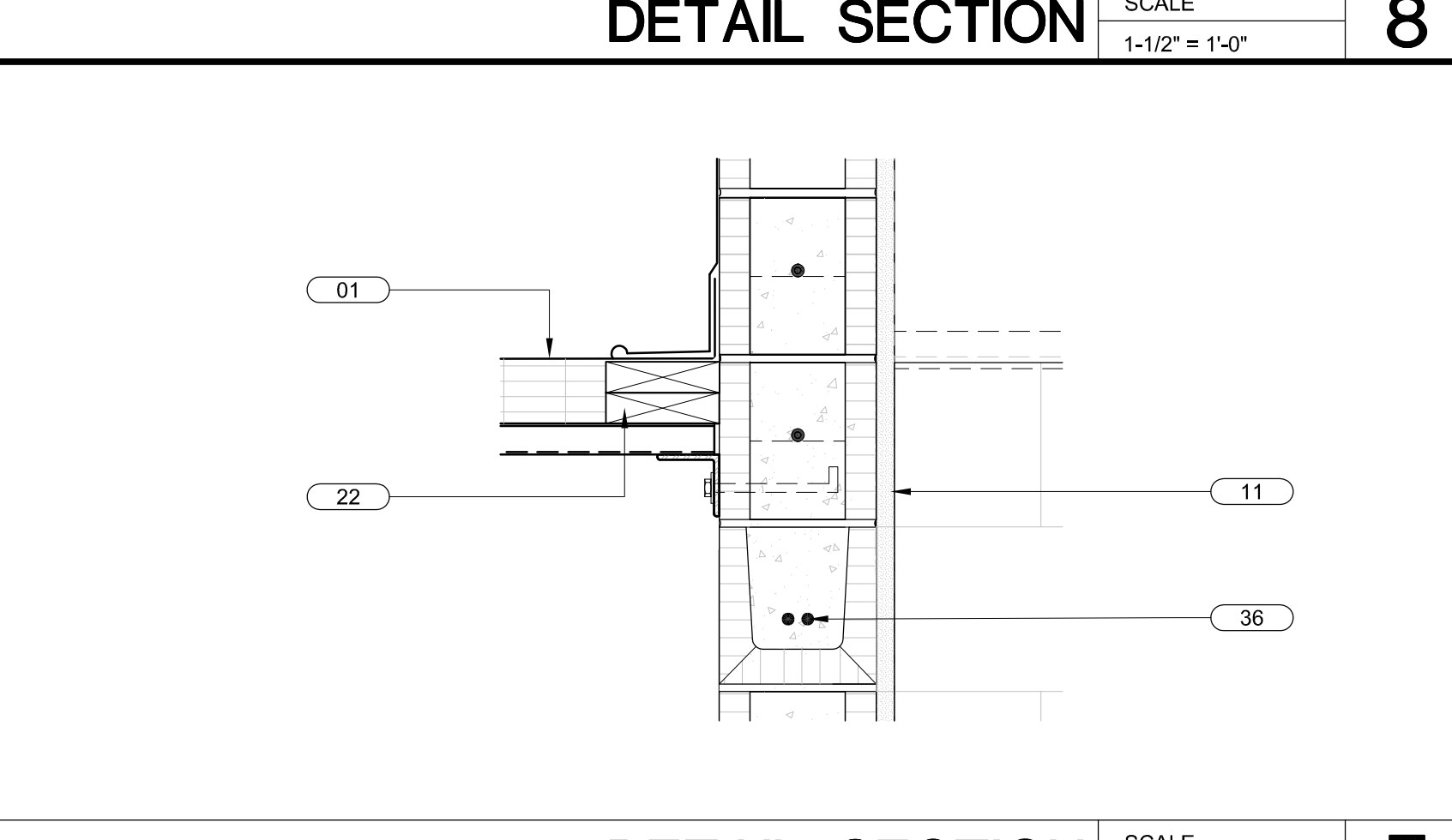
**DETAIL SECTION** SCALE 1-1/2" = 1'-0" **10**



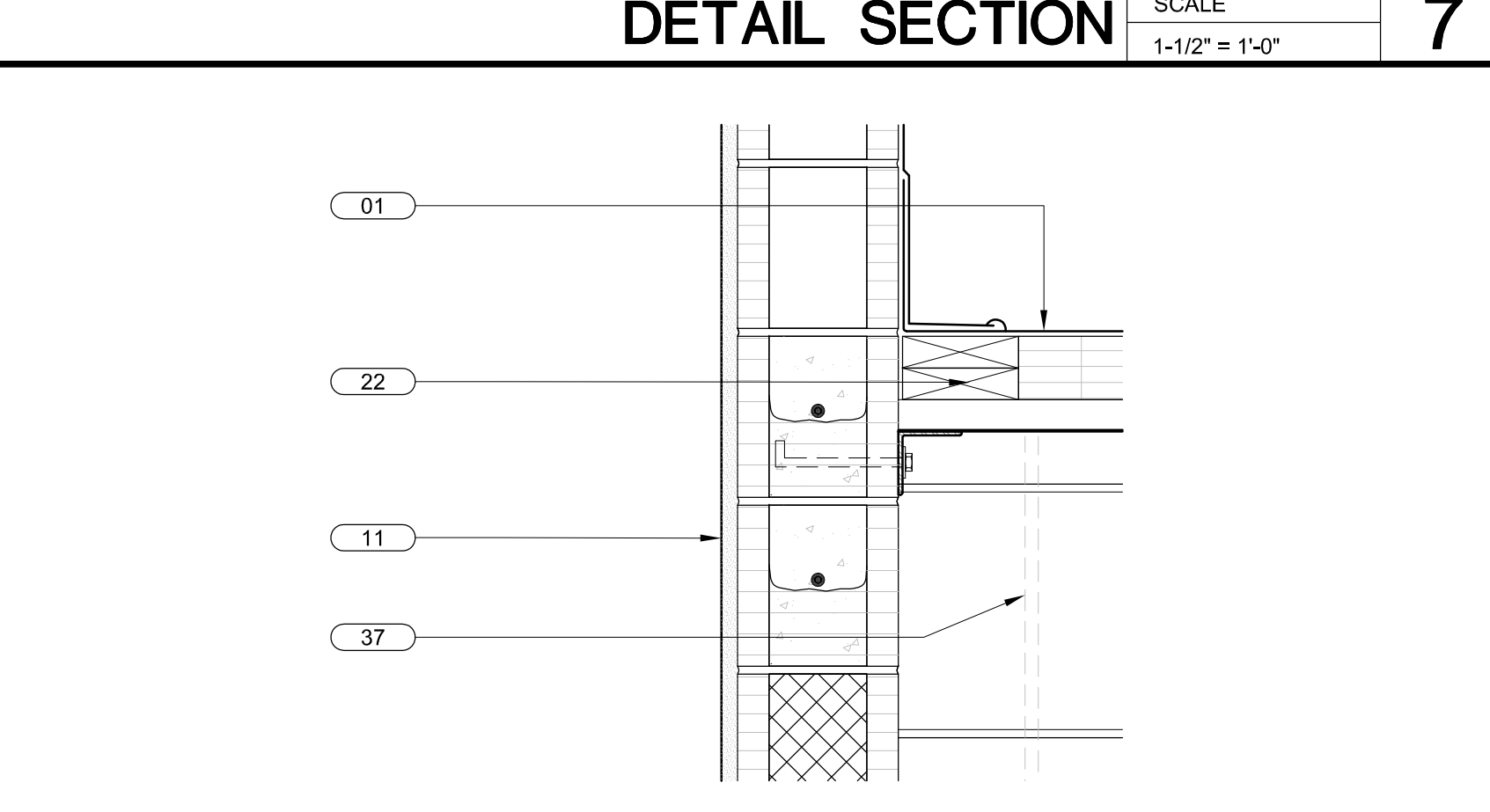
**DETAIL SECTION** SCALE 1-1/2" = 1'-0" **9**



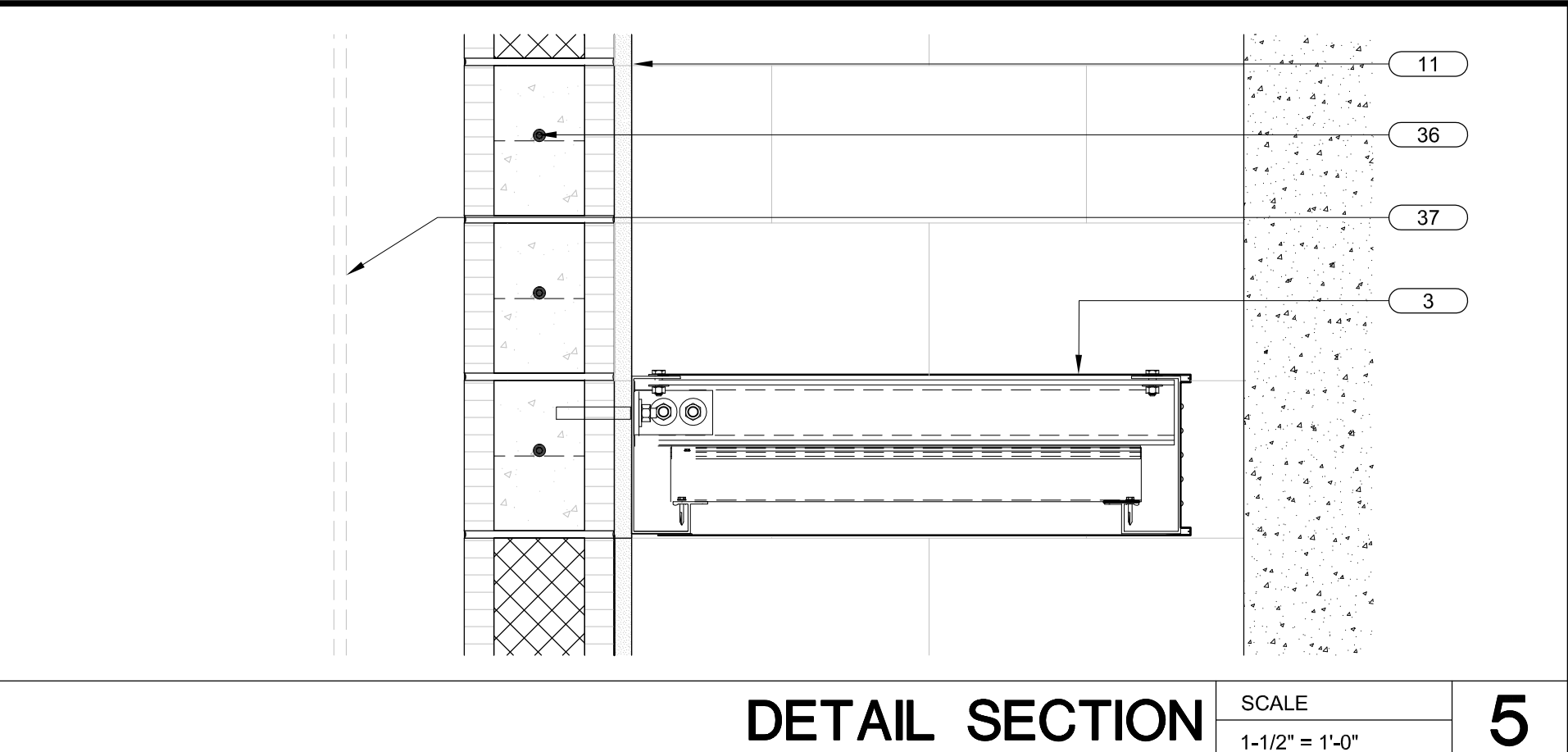
**DETAIL SECTION** SCALE 1-1/2" = 1'-0" **8**



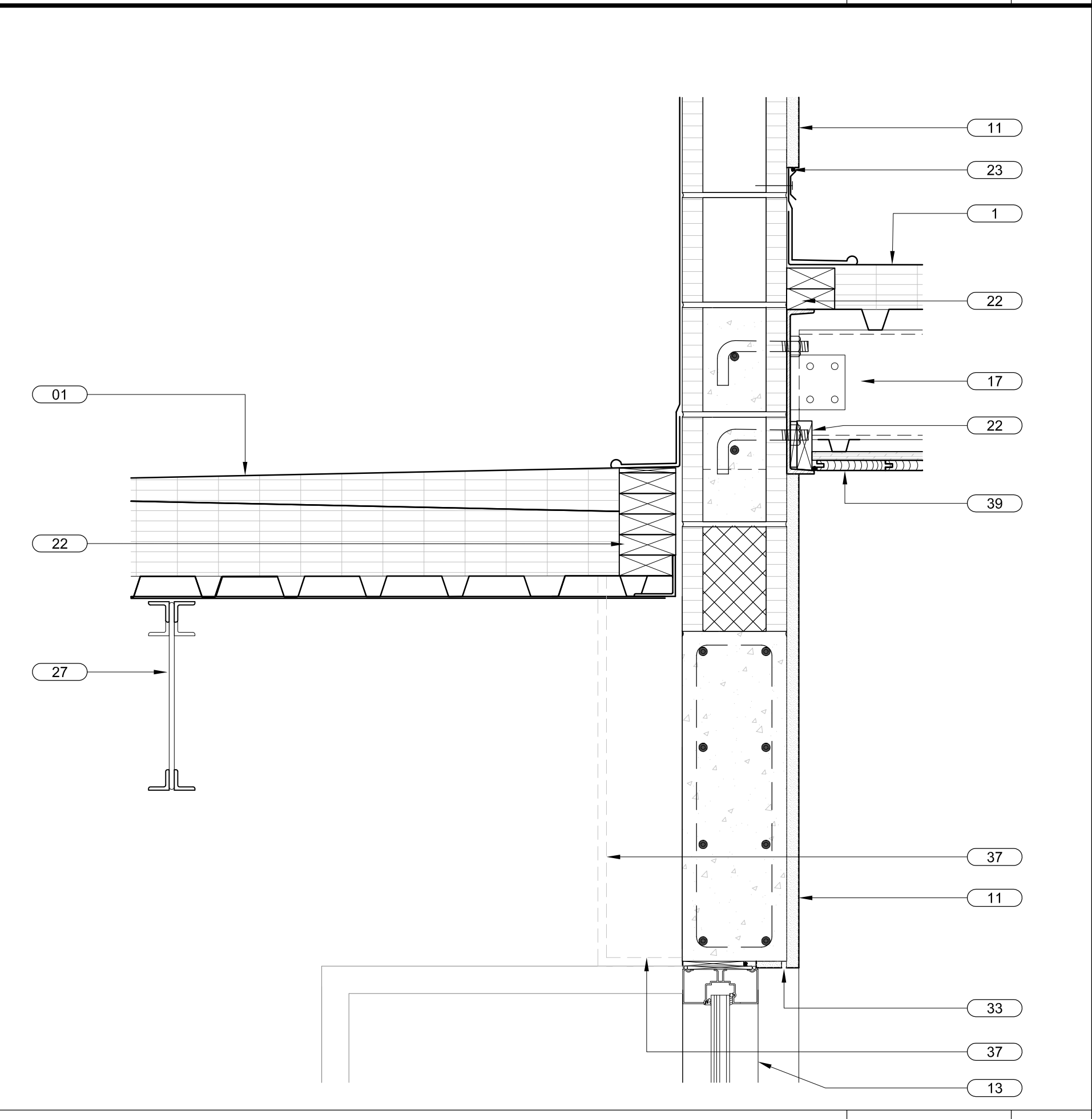
**DETAIL SECTION** SCALE 1-1/2" = 1'-0" **7**



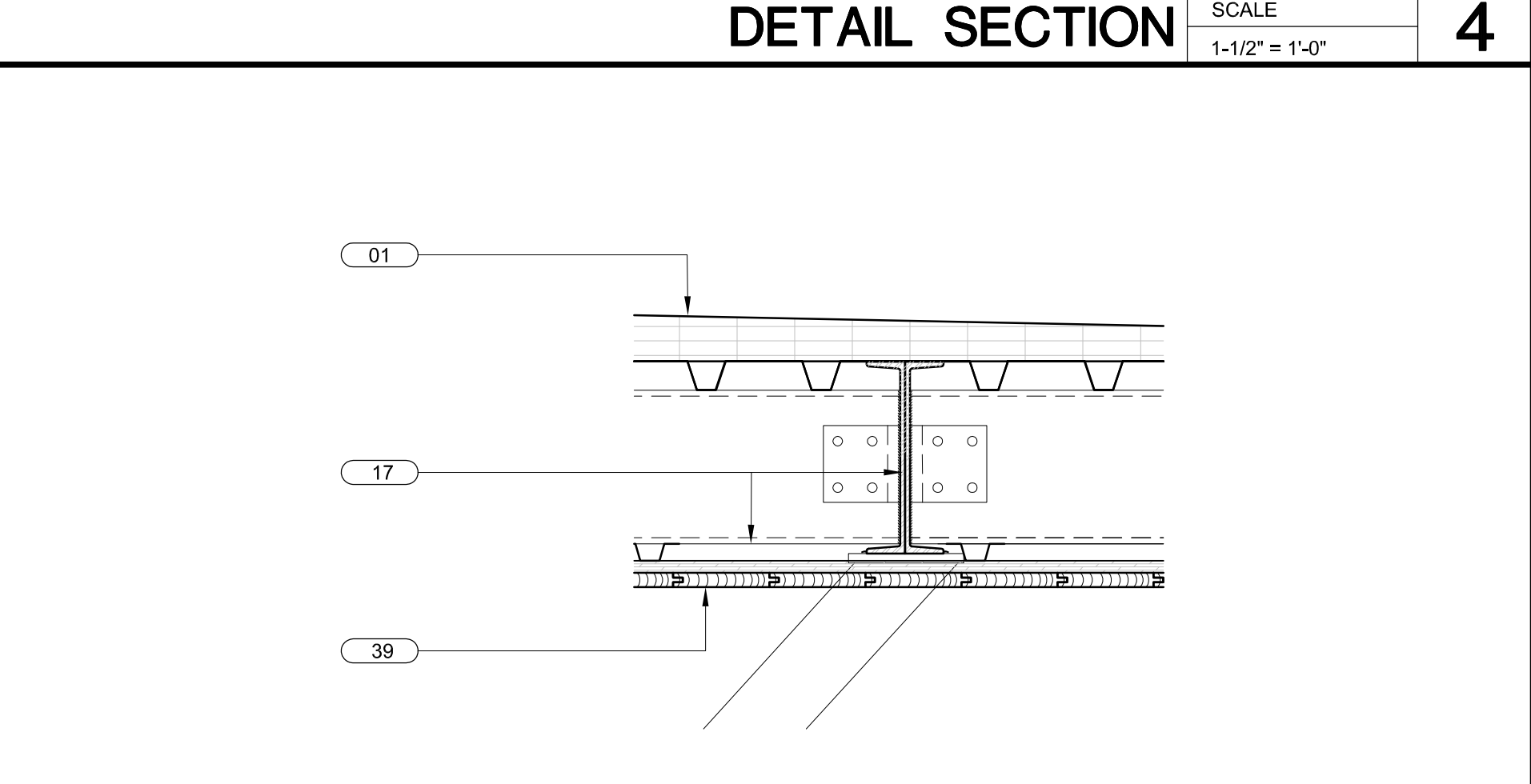
**DETAIL SECTION** SCALE 1-1/2" = 1'-0" **6**



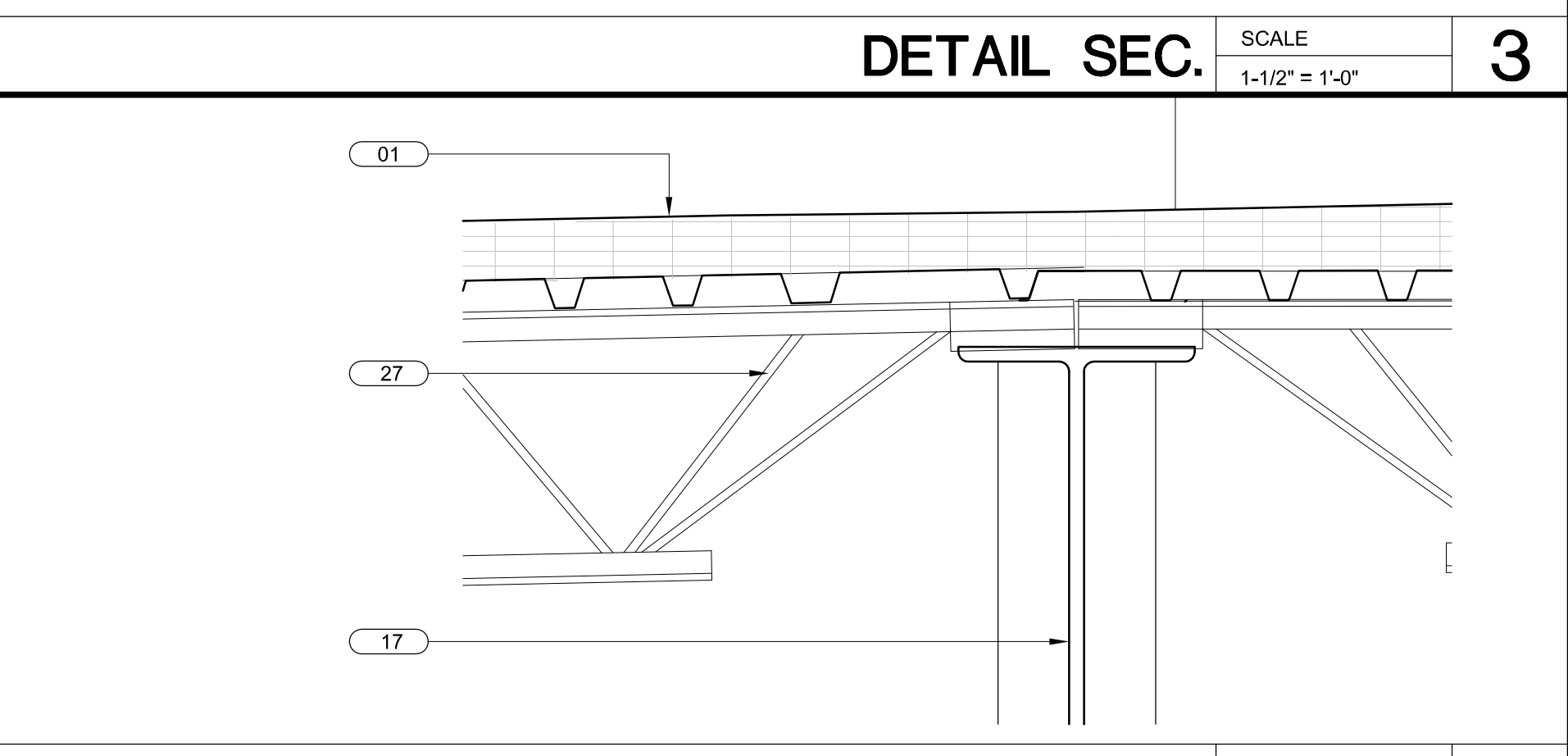
**DETAIL SECTION** SCALE 1-1/2" = 1'-0" **5**



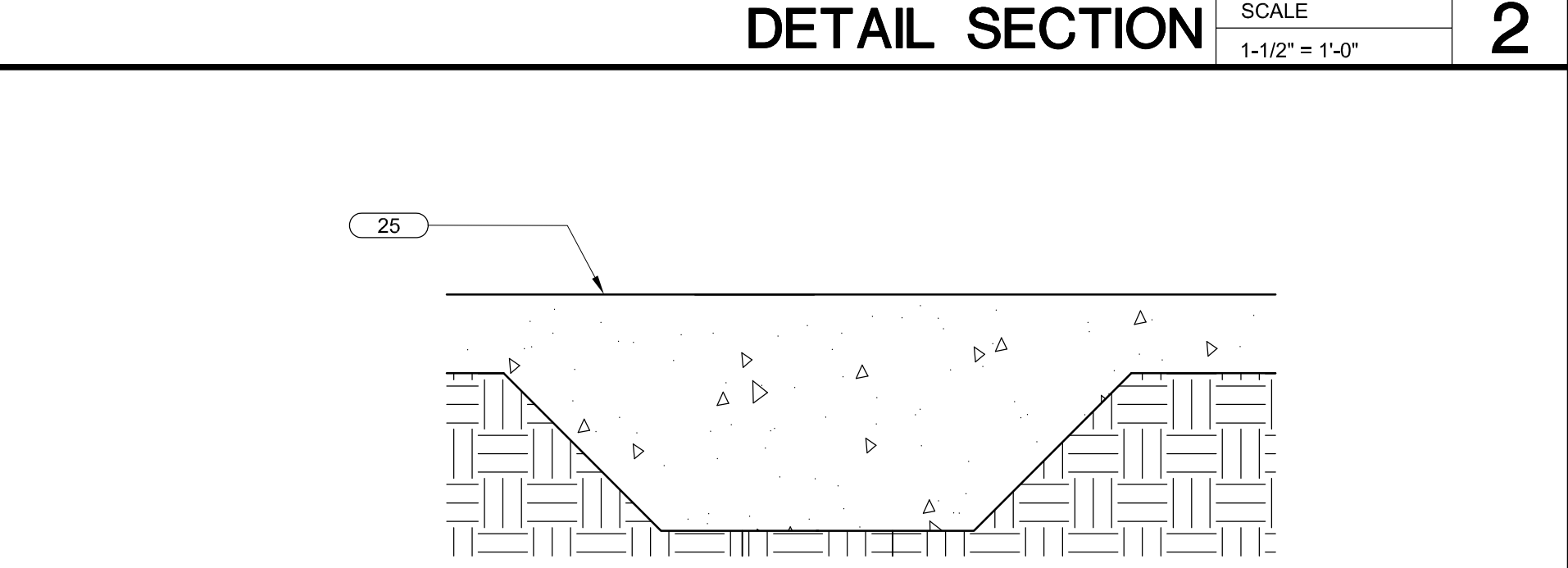
**DETAIL SECTION** SCALE 1-1/2" = 1'-0" **4**



**DETAIL SEC.** SCALE 1-1/2" = 1'-0" **3**



**DETAIL SECTION** SCALE 1-1/2" = 1'-0" **2**



**DETAIL SECTION** SCALE 1-1/2" = 1'-0" **1**

○
○
○
○
○
○
○
○

BULLETIN LOG



**WESTLAKE VISITOR CENTER**  
 CITY OF WESTLAKE  
 PALM BEACH COUNTY, FLORIDA

ISSUE DATE: - 09-30-16  
 ISSUED FOR:  
 PERMIT - BUILDING SHELL ONLY  
 ©AS DATED ARCHITECTURE PLUS INTERNATIONAL, INC.

△
△
△
△
△
△
△
△

REVISION LOG

STATE REGISTRATIONS	
FL #AAC001935	NC #8581
SC #6109	GA #10079
TN #00102675	

Juan F. Romero AIA License No. AP0000793  
TO THE BEST OF THE KNOWLEDGE OF THE ARCHITECT AND ENGINEER, SAID PLANS AND SPECIFICATIONS COMPLY WITH THE APPLICABLE MINIMUM BUILDING CODES AND THE APPLICABLE MINIMUM FIRE SAFETY STANDARDS.

**WESTLAKE VISITOR CENTER**  
 PROJECT NAME  
**DETAIL SECTIONS**  
 SHEET NAME  
 PROJECT NUMBER: **2018.037**  
 DRAWN BY: **DF/CV** CHECKED BY: **TM/PC**  
 SCALE:  
**A3.22**  
 SHEET NUMBER