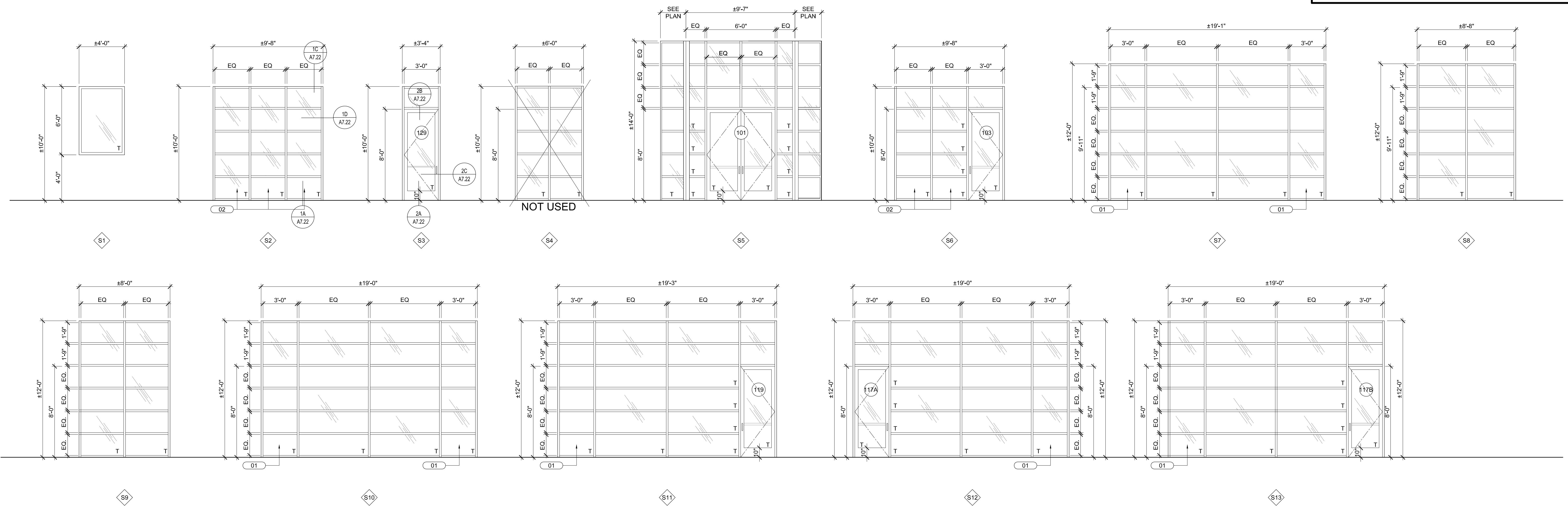


- 01 ALLOW FUTURE INSTALLATION OF 3' WIDE DOOR
- 02 ALLOW FUTURE INSTALLATION OF (3) 3' WIDE DOORS

KEY NOTES XX REFERENCED BY THIS SYMBOL



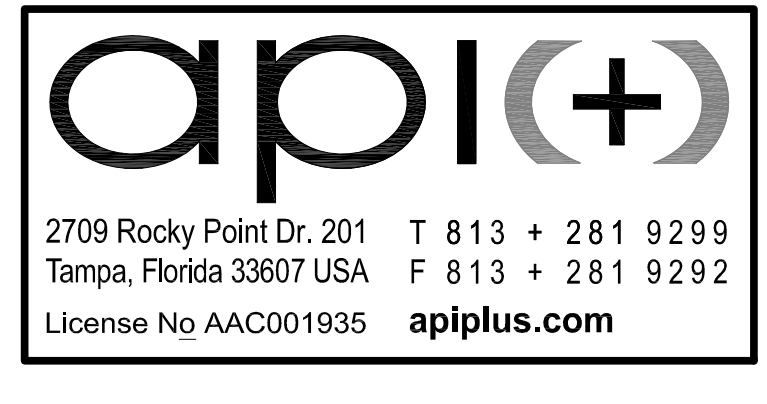
EXTERIOR STOREFRONT SCALE 1/4" = 1'-0" 1

1. STOREFRONT AND CURTAIN WALL MANUFACTURER TO FIELD VERIFY SIZES FOR FINAL SIZES AND INSTALLATION DETAILS.
2. STOREFRONT WINDOW / DOOR AND CURTAIN WALL MANUFACTURER SHALL SUBMIT SIGNED & SEALED SHOP DRAWINGS TO ARCHITECT FOR FINAL APPROVAL. REFER TO SPECIFICATIONS FOR MORE INFORMATION.
3. T= TEMPERED / SAFETY GLAZING
4. ALL EXTERIOR GLAZING TO BE LARGE MISSILE IMPACT RATED
5. ALL EXTERIOR GLAZING TO BE INSULATED
6. DOORS & WINDOWS SHALL COMPLY WITH F.B.C. 1707.4.5.4 FOR 1.5 TIMES THE DESIGN WIND LOAD.
7. PROVIDE CYLINDER LOCK (W/ ADA COMPLIANT THUMB TURN) AND ADA COMPLIANT ALUMINUM THRESHOLD. BALANCE OF HARDWARE BY STOREFRONT MANUFACTURER.
8. INSTALL ALL STOREFRONT PER FLORIDA PRODUCT APPROVAL AND/OR MIAMI DADE NOA REQUIREMENTS.

GLAZING
BASIS OF DESIGN IS LARGE AND SMALL IMPACT RATED / INSULATED ASSEMBLY USING:
PPG SOLARBAN 72 + STARRPHIRE - SHGC 0.30 - SUMMER U VALUE: 0.27
STOREFRONT SYSTEM
BASIS OF DESIGN IS KAWNEER IR-501 LARGE AND SMALL IMPACT RATED / INSULATED
FLORIDA PRODUCT APPROVAL FL8787
MIAMI DADE: NOA No. 14-43018 (EXP 02-15-2017)
FINISH: CLEAR ANODIZED ALUMINUM
APPROVED FOR USE IN HVHZ: YES

SEE STRUCTURAL DRAWINGS FOR COMPONENTS AND CLADDING REQUIREMENTS. DESIGN STOREFRONT SYSTEM AS REQUIRED TO RESIST PRESSURES INDICATED THEREIN.

STOREFRONT GENERAL NOTES SCALE NTS 2



2709 Rocky Point Dr. 201 T 813 + 281 9299
Tampa, Florida 33607 USA F 813 + 281 9292
License No AAC001935 **apiplus.com**



WESTLAKE VISITOR CENTER
CITY OF WESTLAKE PALM BEACH COUNTY, FLORIDA

ISSUE DATE: - 09-30-16
ISSUED FOR:
PERMIT - BUILDING SHELL ONLY
© AS DATED ARCHITECTURE PLUS INTERNATIONAL, INC.

NO.	REVISION

REVISION LOG

STATE REGISTRATIONS

FL #AAC001935	NC #8581
SC #6109	GA #10079
TN #00102675	

Juan F. Romero AIA License No. AR000793

TO THE BEST OF THE KNOWLEDGE OF THE ARCHITECTS AND ENGINEERS, SAID PLANS AND SPECIFICATIONS COMPLY WITH THE PROVISIONS OF THE FLORIDA BUILDING CODES AND THE APPLICABLE MINIMUM SAFETY STANDARDS.

WESTLAKE VISITOR CENTER
PROJECT NAME

STOREFRONT TYPES
SHEET NAME

PROJECT NUMBER: 2016.037

DRAWN BY: DF/CV CHECKED BY: TM/PC

SCALE: AS NOTED

A7.21
SHEET NUMBER