

**FIRE PROTECTION SPECIFICATIONS:**

**REGULATION REQUIREMENTS:** SYSTEM SHALL COMPLY WITH:  
 FLORIDA BUILDING CODE 5TH ED. & FLORIDA FIRE PREVENTION CODE 2014, WITH ALL UPDATES  
 FLORIDA ADMINISTRATIVE CODE # 61G15-32.004  
 2010 NFPA 13 - STANDARD FOR INSTALLATION OF SPRINKLER SYSTEMS.  
 UL AND FM COMPLIANCE  
 LOCAL CODES AND ORDINANCES

**SCOPE:** THE WORK SHALL INCLUDE ALL MATERIALS, EQUIPMENT AND LABOR REQUIRED TO INSTALL AN AUTOMATIC SPRINKLER SYSTEMS FOR THE BUILDING.  
 THE DOCUMENTS HEREIN ARE TO PROVIDE SYSTEM REQUIREMENTS & SPECIFICATION CRITERIA. CONTRACTOR SHALL DESIGN THE PIPING AS REQUIRED BY LOCAL CODES AND NFPA-13.

**SYSTEM DESCRIPTION:** FIRE PROTECTION SYSTEM IS A WET PIPE SYSTEM EMPLOYING AUTOMATIC SPRINKLERS ATTACHED TO A PIPING SYSTEM. WET PIPING SYSTEM CONTAINS WATER TO PROVIDE THE REQUIRED WATER FLOW AND PRESSURE REQUIRED BY NFPA-13.

**PERMITS:** THE INSTALLING CONTRACTOR SHALL BE RESPONSIBLE FOR ALL NECESSARY PERMITS, SUBMITTAL AND APPROVALS ASSOCIATED WITH THIS WORK.

**SHOP DRAWINGS SUBMITTAL AND APPROVALS:** THIS CONTRACTOR SHALL PREPARE DETAILED SHOP DRAWINGS & HYDRAULIC CALCULATIONS OF SYSTEM AS SPECIFIED HEREIN. SUBMIT DETAILED PRODUCT DATA ON EACH PRODUCT AND ACCESSORY.

**GENERAL INSTALLATION:** ALL MATERIALS AND EQUIPMENT UTILIZED TO BE IN ACCORDANCE WITH THE STANDARDS SET FORTH BY NFPA. ALL EQUIPMENT SHALL BE UL LISTED AND APPROVED FOR THE INTENDED APPLICATION.

**UNDERGROUND:** WATER SERVICE LINE TO A POINT 1'-0" ABOVE SLAB WITH FLANGED CONNECTION IN BUILDING SHALL BE FURNISHED BY SITE FIRE LINE INSTALLATION CONTRACTOR.

**QUALITY ASSURANCE:** INSTALLATION AND ALTERATION OF FIRE PROTECTION PIPING, EQUIPMENT, SPECIALTIES AND ACCESSORIES, AND REPAIR AND SERVICING SHALL BE PERFORMED ONLY BY A QUALIFIED INSTALLER. THE TERM QUALIFIED MEANS EXPERIENCED IN SUCH WORK (EXPERIENCED MEANS HAVING A MINIMUM OF FIVE YEARS EXPERIENCE SPECIALIZING IN FIRE PROTECTION SYSTEMS SIMILAR IN SIZE AND SCOPE TO THIS PROJECT). FAMILIAR WITH ALL PRECAUTIONS REQUIRED AND HAS COMPLIED WITH ALL THE REQUIREMENTS OF THE AUTHORITY HAVING JURISDICTION. UPON REQUEST, SUBMIT EVIDENCE OF SUCH QUALIFICATIONS TO THE ARCHITECT.

**SYSTEM DESIGN:**  
 1. ORD. HAZARD, GROUP-2 OCCUPANCY. 0.2-GPM/1,500-SQFT  
 MAX. COVERAGE AREA PER HEAD = 130-SQFT MAX HEAD SPACING = 15'-FT.  
 ALLOW FOR 250-GPM HOSE STREAM (INSIDE/OUTSIDE)

2. PROVIDE NECESSARY DEVIATION IN THE PIPE ROUTING AND ARRANGEMENTS TO ACCOMMODATE FIELD CONDITIONS. INCLUDE ADDITIONAL FITTINGS, HANGER AND ACCESSORIES REQUIRED FOR THESE OFFSETS.  
 3. MAKE MODIFICATIONS TO THE SYSTEM TO COMPLY WITH AUTHORITIES HAVING JURISDICTION.  
 4. HYDRANT FLOW TEST: HAS BEEN REQUESTED AND RESULTS WILL BE DISTRIBUTED TO CONTRACTOR.

**VALVES:**  
 1. INDICATING TYPE BUTTERFLY OR O.S.&Y. VALVE: UL LISTED SUITABLE FOR ELECTRIC TAMPER SWITCH INSTALLATION. PROVIDE LOCKING CHAIN ON VALVE IN ACCORDANCE WITH NFPA-13.  
 2. CHECK VALVE: UL LISTED FOR FIRE PROTECTION SYSTEMS.

ALL VALVES ON THE FIRE SPRINKLER SYSTEM TO BE SUPERVISED BY FIRE ALARM SYSTEM. FIRE PROTECTION CONTRACTOR SHALL BE RESPONSIBLE FOR COORDINATING WITH FIRE ALARM CONTRACTOR, THE TYPE AND LOCATION OF FLOW, PRESSURE AND SUPERVISORY SWITCHES.

**SPRINKLERS:**  
 IN GENERAL USE UPRIGHT, SIDEWALL, SEMI-RECESSED & FLUSH PENDANTS TYPE SPRINKLERS WITH 1/2" MINIMUM ORIFICE AND TEMPERATURE CLASSIFICATIONS IN ACCORDANCE WITH NFPA-13. USE PENDANT HEADS WHERE APPLICABLE. USE SIDEWALL HEADS WHERE SPACE CONDITIONS PREVENT PENDANTS. PROVIDE WIRE GUARDS IN MECHANICAL AND ELECTRICAL ROOMS. ALL SPRINKLER HEADS SHALL BE QUICK RESPONSE TYPE & ORDINARY DEGREE RATING. PROVIDE STOCK OF SPARE SPRINKLERS IN ACCORDANCE WITH NFPA-13. COORDINATE LOCATION OF HEADS WITH LIGHTING FIXTURES AND ROOF STRUCTURE. LOCATE HEADS IN CENTER OF 2X2 OR 2X4 TILES, OR SYMMETRICALLY WITH CEILING LAYOUT.

**PIPING:**  
 SCHEDULE 10 (2" AND LARGER) OR SCHEDULE 40 BLACK STEEL MAINS AND BRANCHES. MECHANICAL PIPE, FITTINGS, COUPLING, AND ACCESSORIES SHALL BE UL LISTED FOR FIRE PROTECTION SYSTEMS. ALL EXPOSED PIPING SHALL BE BLACK STEEL PAINTED WITH RUST PROTECTIVE PAINTING; COLOR TO BE COORDINATED WITH THE ARCHITECT.

**FIRE PROTECTION ACCESSORIES:**  
 1. TAMPER SWITCH: UL LISTED FOR MOUNTING ON MAIN VALVE. WIRING BY ELECTRICAL CONTRACTOR.  
 2. FLOW SWITCH: UL LISTED. MOUNT ON EACH FLOOR. WIRING BY ELECTRICAL CONTRACTOR.  
 3. ELECTRICAL ALARM BELL: UL LISTED AND SUITABLE FOR FIRE PROTECTION SERVICE LOCATED OUTDOORS. ALARM CONTACTS AND ACCESSORIES. WIRING BY ELECTRICAL CONTRACTOR.  
 4. FIRE DEPARTMENT CONNECTION: COORDINATE WITH THE FIRE MARSHAL FOR LOCATION ON BUILDING OR BACKFLOW PREVENTER.

**INSTALLATION:**  
 1. INSTALL IN ACCORDANCE WITH NFPA-13, AND REQUIREMENTS OF LOCAL AUTHORITY HAVING JURISDICTION.  
 2. COORDINATE ELECTRICAL WIRING OF ALARM BELL, FLOW SWITCH AND TAMPER SWITCH WITH ELECTRICAL WORK (DIVISION 16).  
 3. INSTALL INSPECTOR TEST CONNECTION IN ACCORDANCE WITH NFPA-13.  
 4. INSTALL PIPING TO PROVIDE FOR SYSTEM DRAINAGE. PROVIDE MAIN AND AUXILIARY DRAINS IN ACCORDANCE WITH NFPA-13.  
 5. PROVIDE ADDITIONAL ACCESSORY STEEL ANGLES AND SUPPORTS, AS REQUIRED, FOR SUPPORT OF PIPING AND ACCESSORIES.  
 6. CONCEAL PIPING WHERE REQUIRED (SUCH AS ABOVE CEILINGS AND WITHIN FINISHED WALLS).  
 7. COORDINATE WITH DEVICES OF OTHER TRADES (SUCH AS DIFFUSERS, LIGHTS, PLUMBING DEVICES).  
 8. PROVIDE PERMANENT IDENTIFICATION AT EACH SYSTEM RISER INDICATING SYSTEM DESIGN INFORMATION, IN ACCORDANCE WITH NFPA-13.  
 9. HANGERS AND SUPPORTS SHALL COMPLY WITH REQUIREMENTS OF NFPA-13.  
 TESTING: FLUSH, TEST AND INSPECT SPRINKLER PIPING SYSTEMS IN ACCORDANCE WITH NFPA-13.  
 10. INSTALL PIPING MAINS AND BRANCHES UP WITHIN ROOF FRAMING SYSTEM TO ALLOW FOR DUCTWORK AND HIGH CEILINGS.

REPLACE PIPING SYSTEMS COMPONENTS WHICH DO NOT PASS THE TEST PROCEDURES SPECIFIED AND RETEST REPAIRED PORTIONS OF THE SYSTEM.

CONDUCT PIPE TESTS BEFORE JOINTS ARE COVERED AND AFTER THRUST BLOCKS HAVE HARDENED.

CONDUCT HYDROSTATIC TESTS PER REQUIREMENTS OF NFPA-13.

PROVIDE FIRE RATED SLEEVES AND FIRE STOP ALL PENETRATIONS OF RATED WALLS.

LOCATE PIPE HANGERS IN ACCORDANCE WITH NFPA 13.

NOTE: ALL SPRINKLER PIPE SIZES, INCLUDING BRANCH PIPING SHALL BE DETERMINED BY HYDRAULIC CALCULATIONS.

**FLORIDA ADMINISTRATIVE CODE 61G15-32.004**

SYSTEM TO COMPLY THE FLORIDA ADMINISTRATIVE CODE# 61G15-32.004, #2 (A-J):

(2)(A) POINT OF SERVICE: NEW 8" FIRE MAIN - LOCATION SHOWN ON SITE PLAN

(2)(B) NFPA-13, 2010 ED. IS THE STANDARD TO BE UTILIZED.

(2)(C) HAZARD OCCUPANCY: ORDINARY HAZARD GROUP 2 (RETAIL/SALES)

(2)(D) DESIGN APPROACH: WATER BASED WET SYSTEM UTILIZING A LOCAL WATER SUPPLY SOURCE. (SEE 'C' ABOVE FOR DENSITIES UTILIZED, AND SEE SPRINKLER LEGEND ON FLOOR PLAN FOR TEMPERATURE RATINGS & SPACING ALLOWED FOR SPRINKLER HEADS.)

(2)(E) WATER SUPPLY: A PROPOSED 16" PVC CIRCULATING WATER MAIN IS UTILIZED FOR THE WATER SOURCE TO SUPPLY THE PROPOSED 8" FIRE MAIN SERVING THIS BUILDING. (SEE FLOOR PLAN) THE WATER SUPPLY RUNS PAST THE PROPOSED BUILDING/SITE AND CIRCULATES TO & FROM THE CITY MAINS.

(2)(F) WATER SUPPLY FLOW TEST: A FLOW TEST ON THE LOCAL WATER MAIN HAS BEEN REQUESTED AND THE RESULTS WILL BE DISTRIBUTED TO CONTRACTOR, WHEN AVAILABLE. NOTE THAT THE WATER MAIN SERVING THE SITE IS NOT INSTALLED YET.

(2)(G) VALVING/ALARMS: RISER / FLOOR VALVES CONTAINS FLOW & TAMPER SWITCHES, AS SHOWN ON THE RISER DIAGRAM.

(2)(H) M.I.C.: DISCUSSIONS WITH CIVIL ENGINEERS FOR THE SITE INDICATES NO KNOWN UNUSUAL ISSUES OR CONCERNS.

(2)(I) SYSTEM PROTECTION: FIRE MAIN AS SHOWN ON FP101 IS PROTECTED WITH A MUNICIPAL APPROVED DOUBLE DETECTOR CHECK VALVE ASSEMBLY.

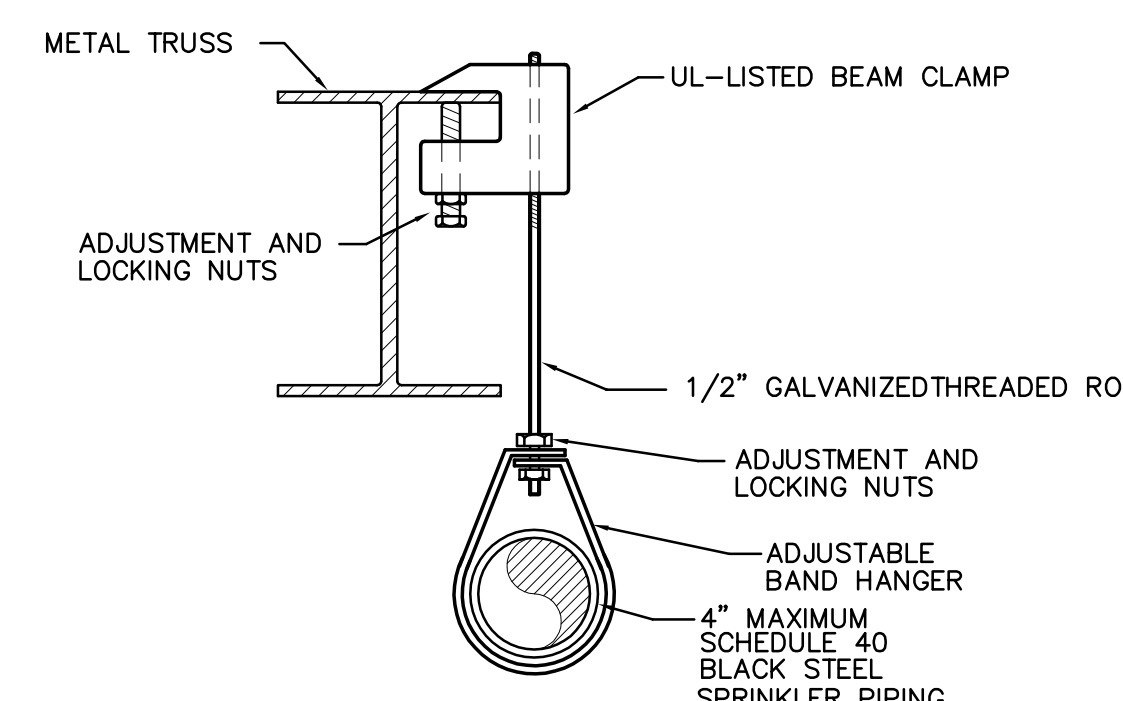
(2)(J) QUALITY SPECIFICATIONS: SYSTEM COMPONENTS SHALL BE RATED MIN. 175-PSI, AND VALVES SHALL BE UL-LISTED. SEE REQUIREMENTS IN NOTES BELOW FOR MATERIAL SPECIFICATIONS.

(2)(K) FIRE PUMP: BASED ON ESTIMATED SITE PRESSURE AND SYSTEM DESIGN, A FIRE PUMP IS NOT YET ANTICIPATED.

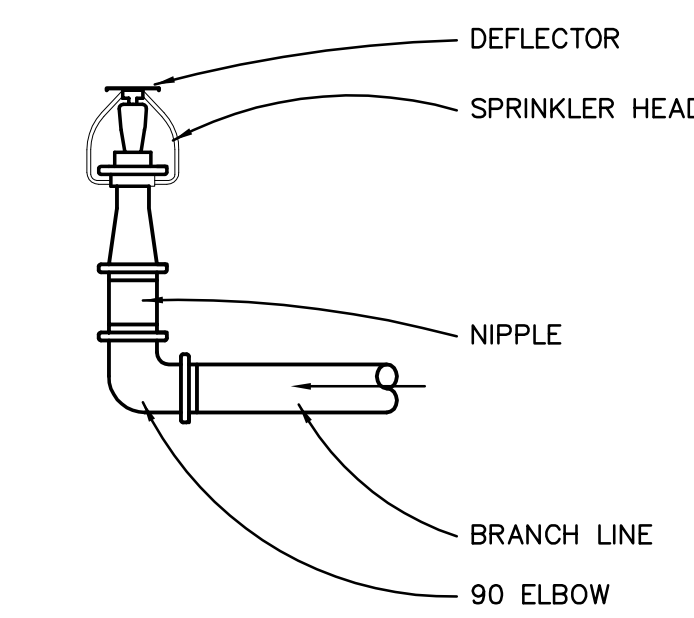
(2)(L) FIREWATER STORAGE TANK: BASED ON EXISTING MUNICIPAL SITE AVAILABLE UTILITIES, AND PROPOSED MODIFICATIONS, A STORAGE TANK IS NOT ANTICIPATED.

(2)(M) OWNER'S CERTIFICATE: THIS BUILDING AND SPACE IS NOT A PRIMARY STORAGE OCCUPANCY

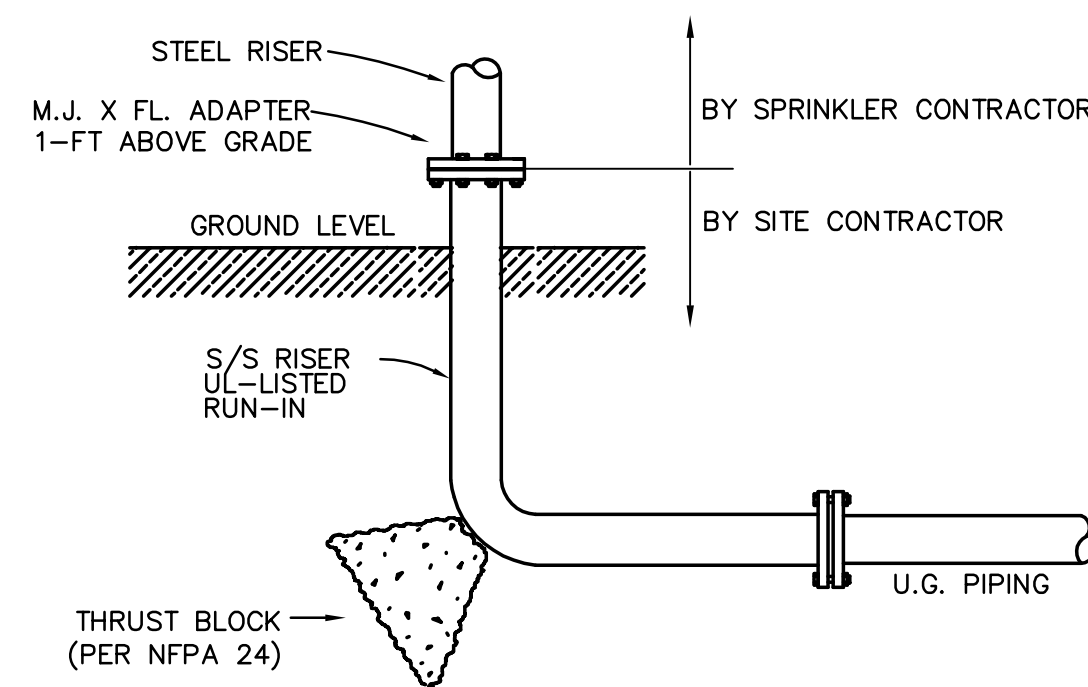
NOTE: ANY "MATERIAL" DEVIATIONS FROM THESE OR ANY REQUIREMENTS ON THIS PLAN REQUIRES THE APPROVAL OF THE ENGINEER OF RECORD PRIOR TO IMPLEMENTATION OF SAID DEVIATION.



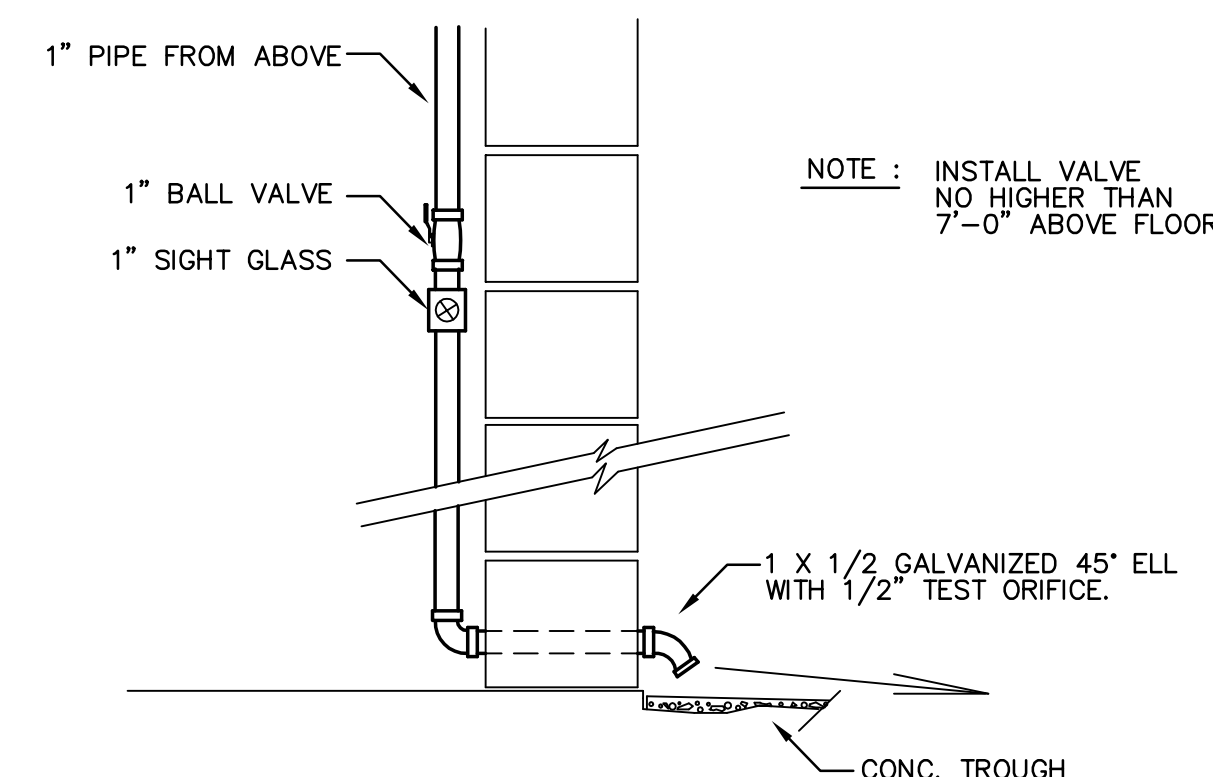
**PIPE HANGER DETAIL**  
SCALE: NONE



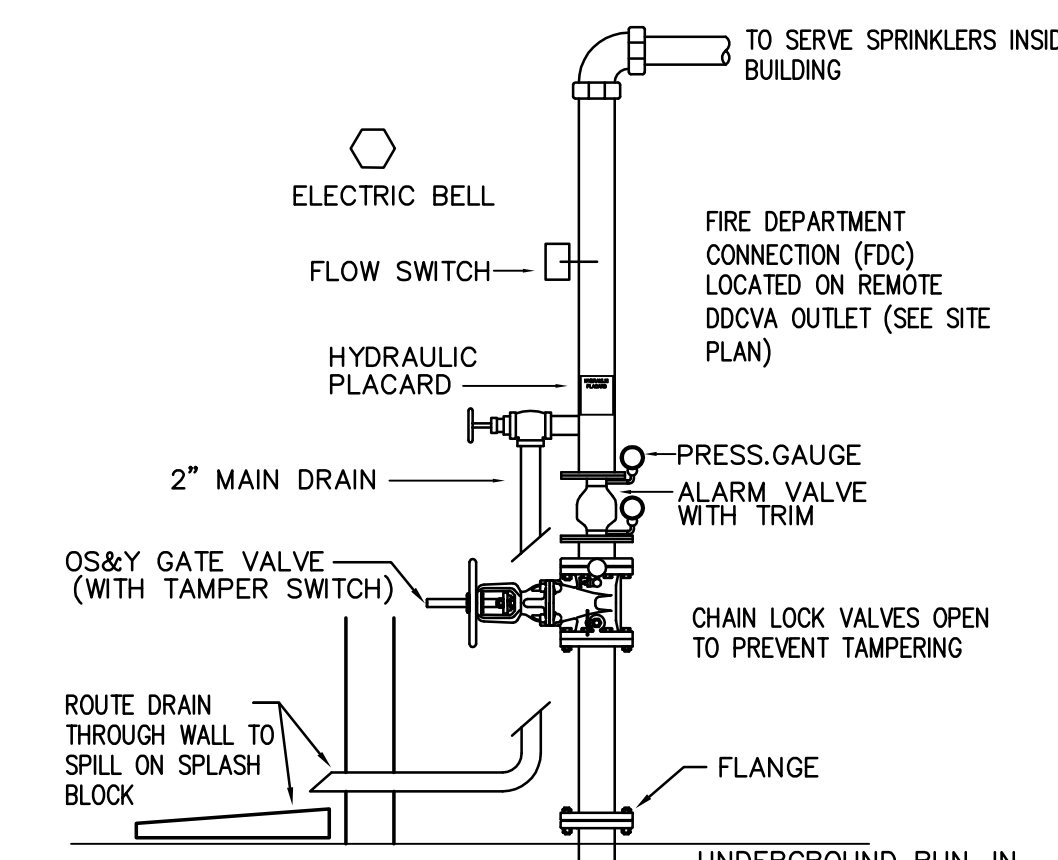
**UPRIGHT SPRINKLER HEAD DETAIL**  
SCALE: NONE



**RUN-IN TO RISER AT BUILDING ENTRANCE**  
NO SCALE



**INSPECTOR'S TEST DETAIL**  
SCALE: NONE



**FIRE RISER SYSTEM DETAIL**  
SCALE: NONE

**STEPANEK-ENGINEERING, INC.**  
 CERT. AUTH. # 8597  
 dba: **STEPANEK-LEWIS AND ASSOCIATES**  
 2257 TWELVE OAKS WAY, SUITE 103  
 WESLEY CHAPEL, FL 32644  
 PH (813) 991-1248

**api(+)**  
 2709 Rocky Point Dr. 201 T 813 + 281 9299  
 Tampa, Florida 33607 USA F 813 + 281 9292  
 License No AAC001935 **apiplus.com**

BULLETIN LOG

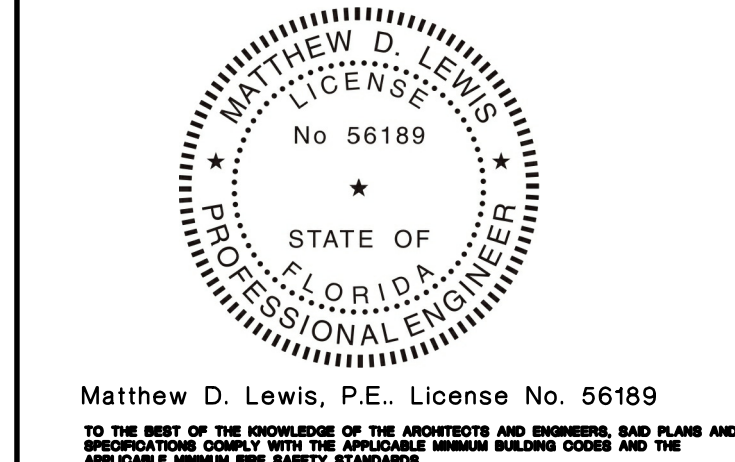


**WESTLAKE AUXILIARY SALES CENTER**  
 CITY OF WESTLAKE  
 PALM BEACH COUNTY, FLORIDA

ISSUE DATE: - 09-30-16  
 ISSUED FOR:  
**PERMIT - BUILDING SHELL ONLY**  
 ©AS DATED ARCHITECTURE PLUS INTERNATIONAL, INC.

REVISION LOG

STATE REGISTRATIONS  
 FL 56189



**WESTLAKE AUXILIARY SALES CENTER**  
 PROJECT NAME

**FIRE PROTECTION SPECS AND DETAILS**  
 SHEET NAME

PROJECT NUMBER: 2016.082  
 DRAWN BY: TJ CHECKED BY: ML  
 SCALE: AS SHOWN

**FP2.01**  
 SHEET NUMBER