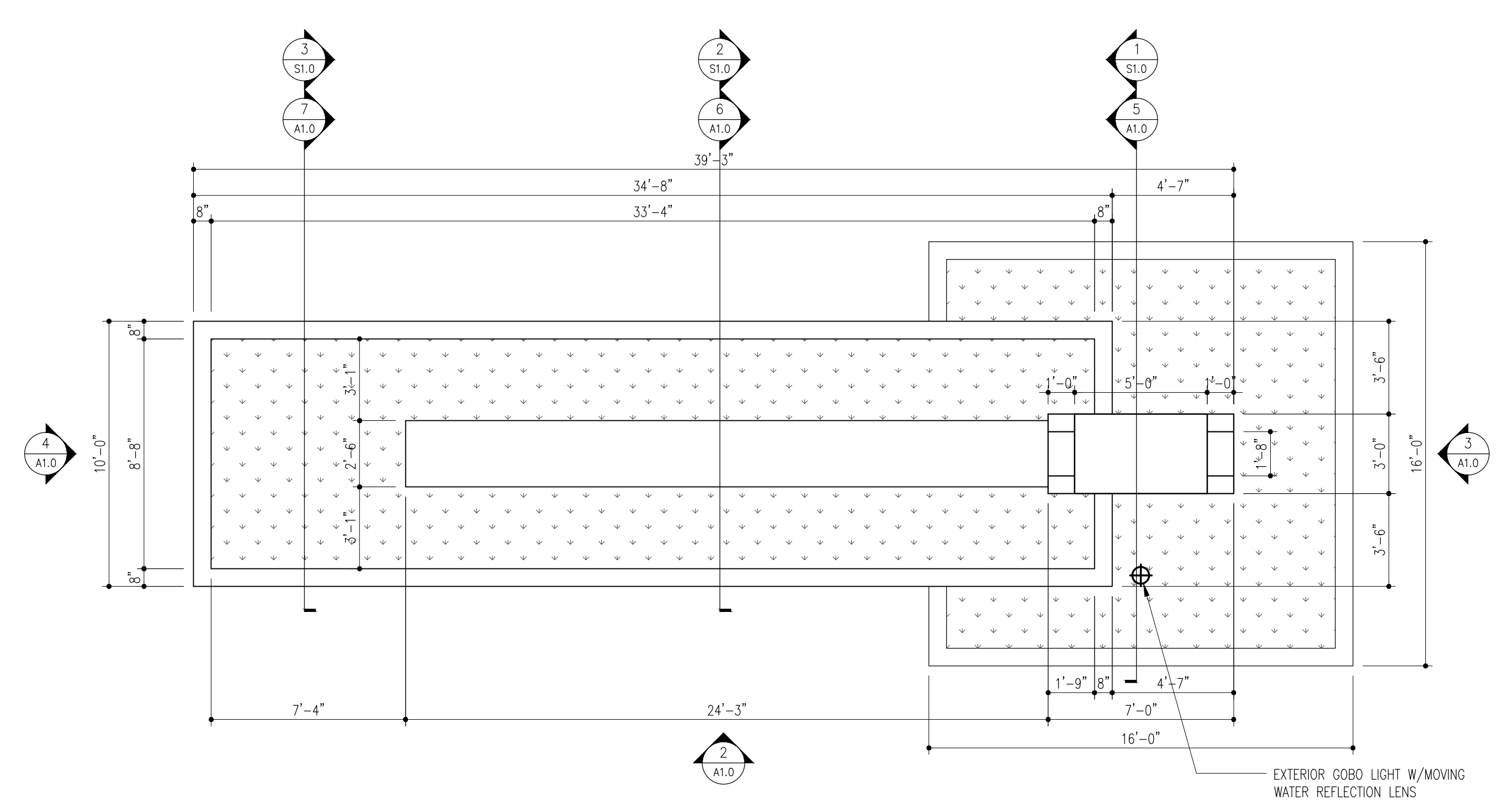


REVISIONS

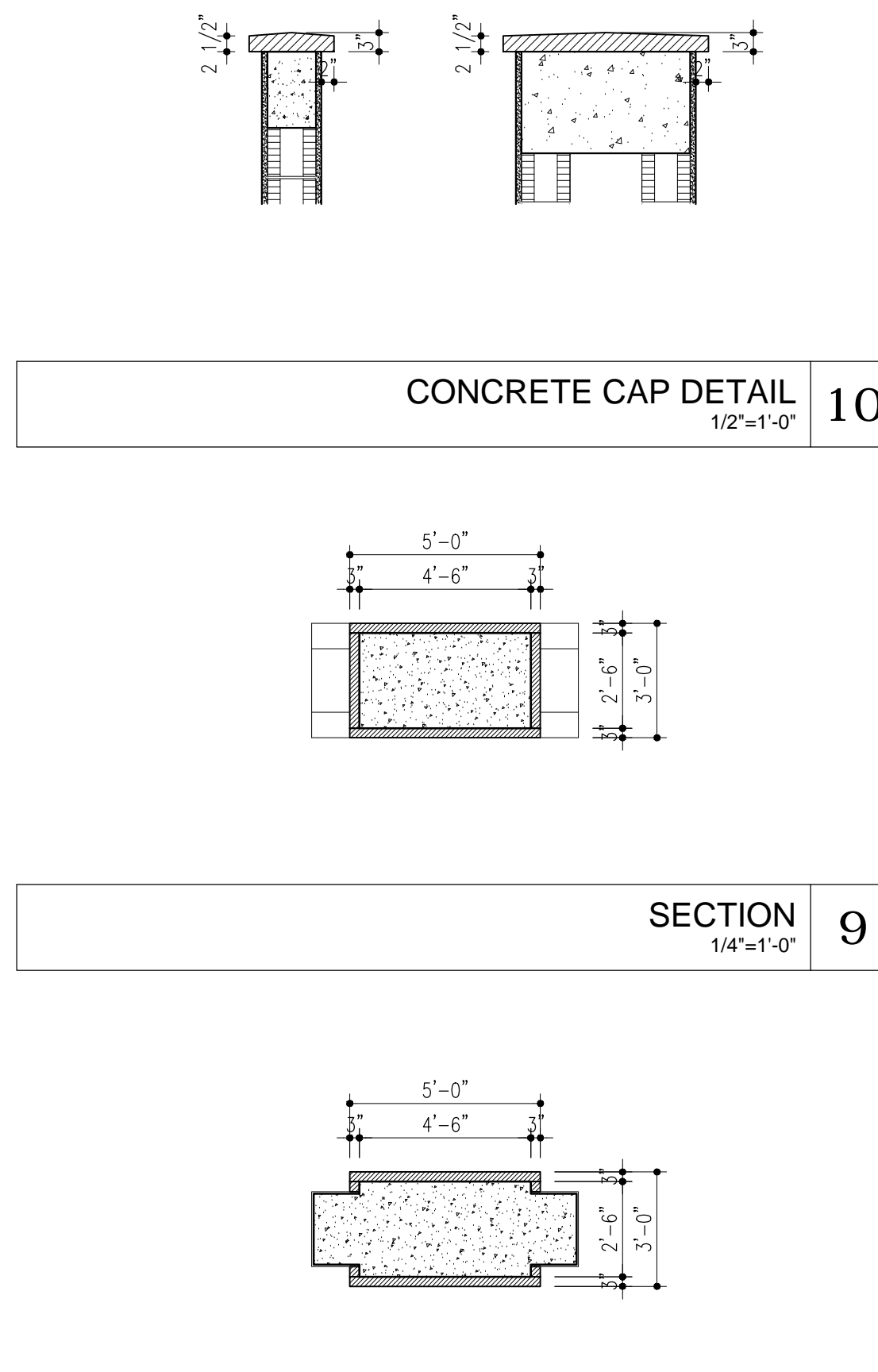
1.
2.
3.
4.
5.
6.
7.
8.
9.
10.

ALL MEASUREMENTS, ARRANGEMENTS, AND PLANS INDICATED OR REPRESENTED BY THIS DRAWING ARE OWNED BY AND PROPERTY OF THE OFFICE, AND WHEN CREATED, EVALUATED, AND DEVELOPED FOR USE, AND IN CONNECTION WITH THE SPECIFIED PROJECT, NONE OF SUCH MEASUREMENTS, ARRANGEMENTS, AND PLANS SHALL BE USED BY OR DISCLOSED TO ANY PERSON, FIRM, OR CORPORATION FOR ANY PURPOSE WITHOUT WRITTEN PERMISSION OF RWB LINARES ARCHITECTURE, INC.

MINTO WEST  
ENTRY MONUMENTS  
TYPE A1

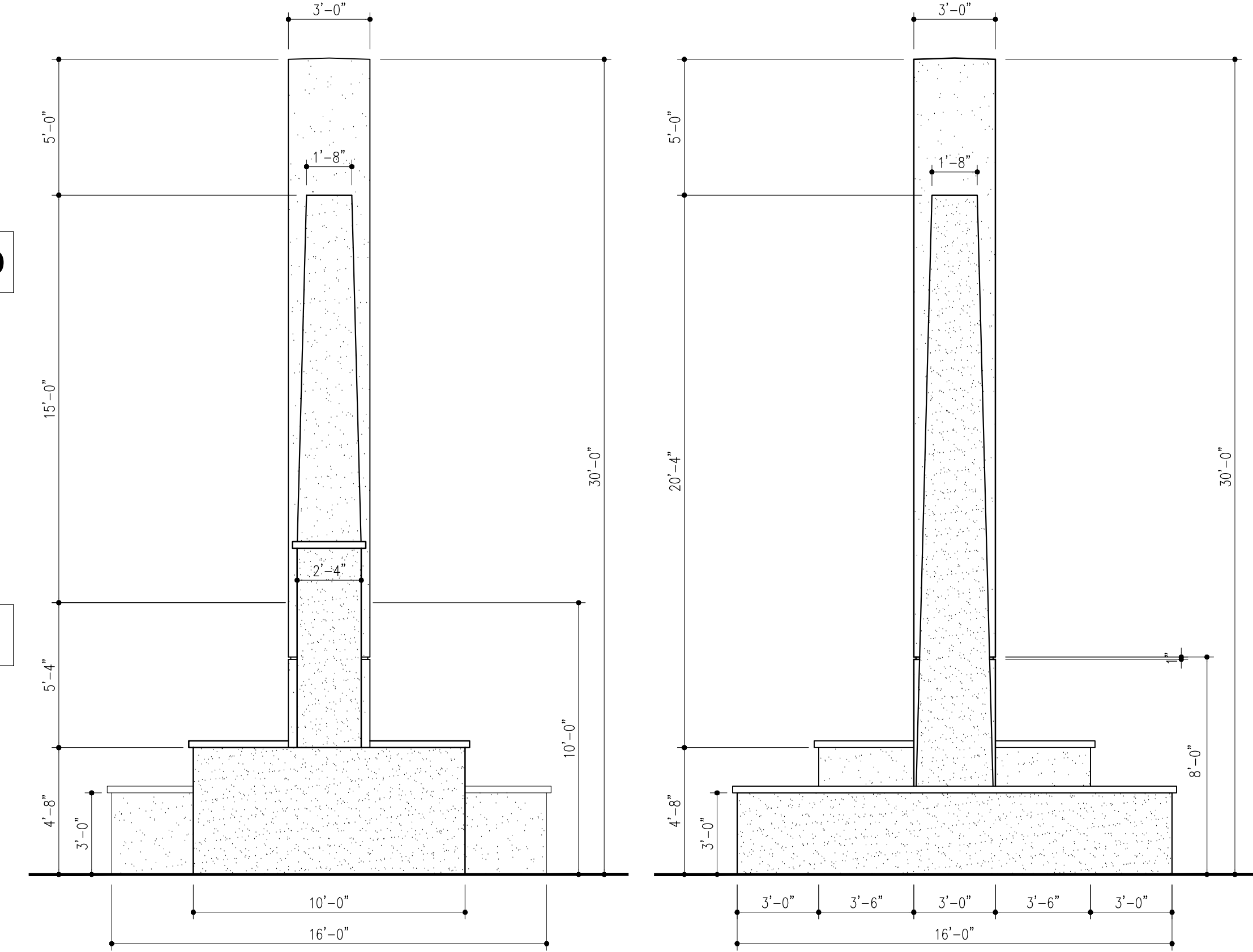


EXTERIOR GOBO LIGHT W/MOVING WATER REFLECTION LENS



CONCRETE CAP DETAIL  
1/2"=1'-0" 10

SECTION  
1/4"=1'-0" 9

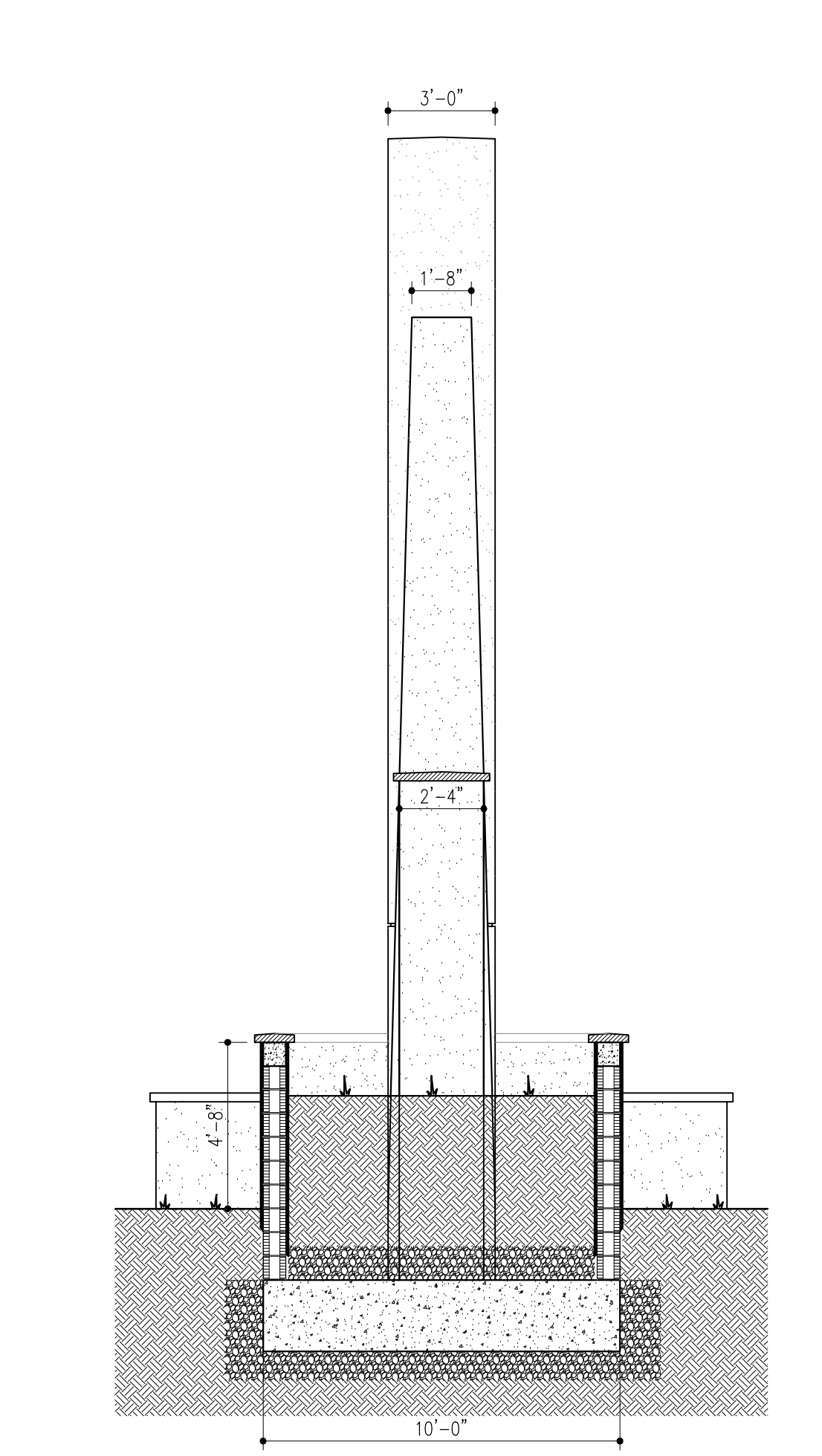


SECTION  
1/4"=1'-0" 8

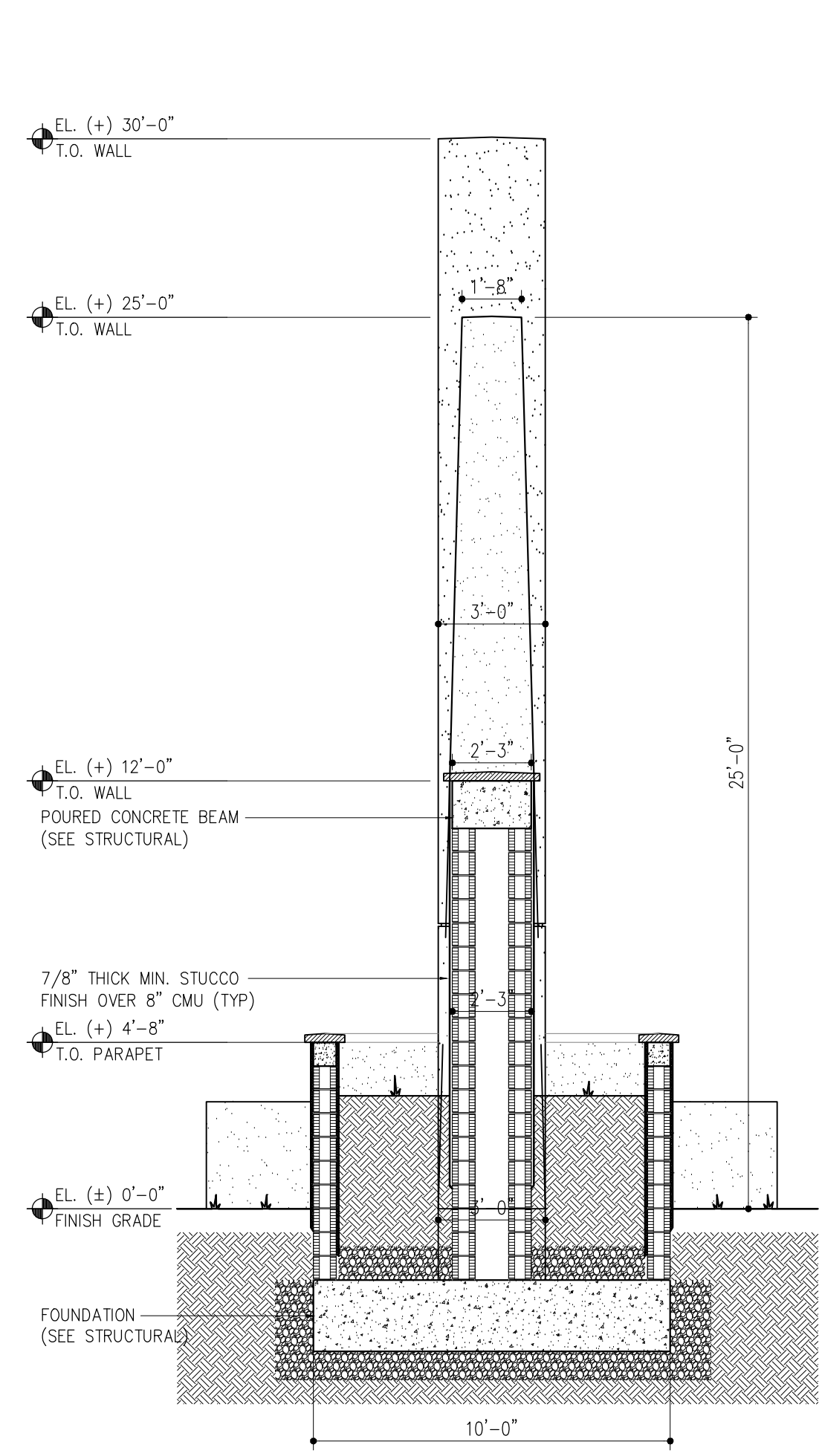
SIDE ELEVATION (PLANTER SIDE)  
1/4"=1'-0" 4

SIDE ELEVATION (TOWER SIDE)  
1/4"=1'-0" 3

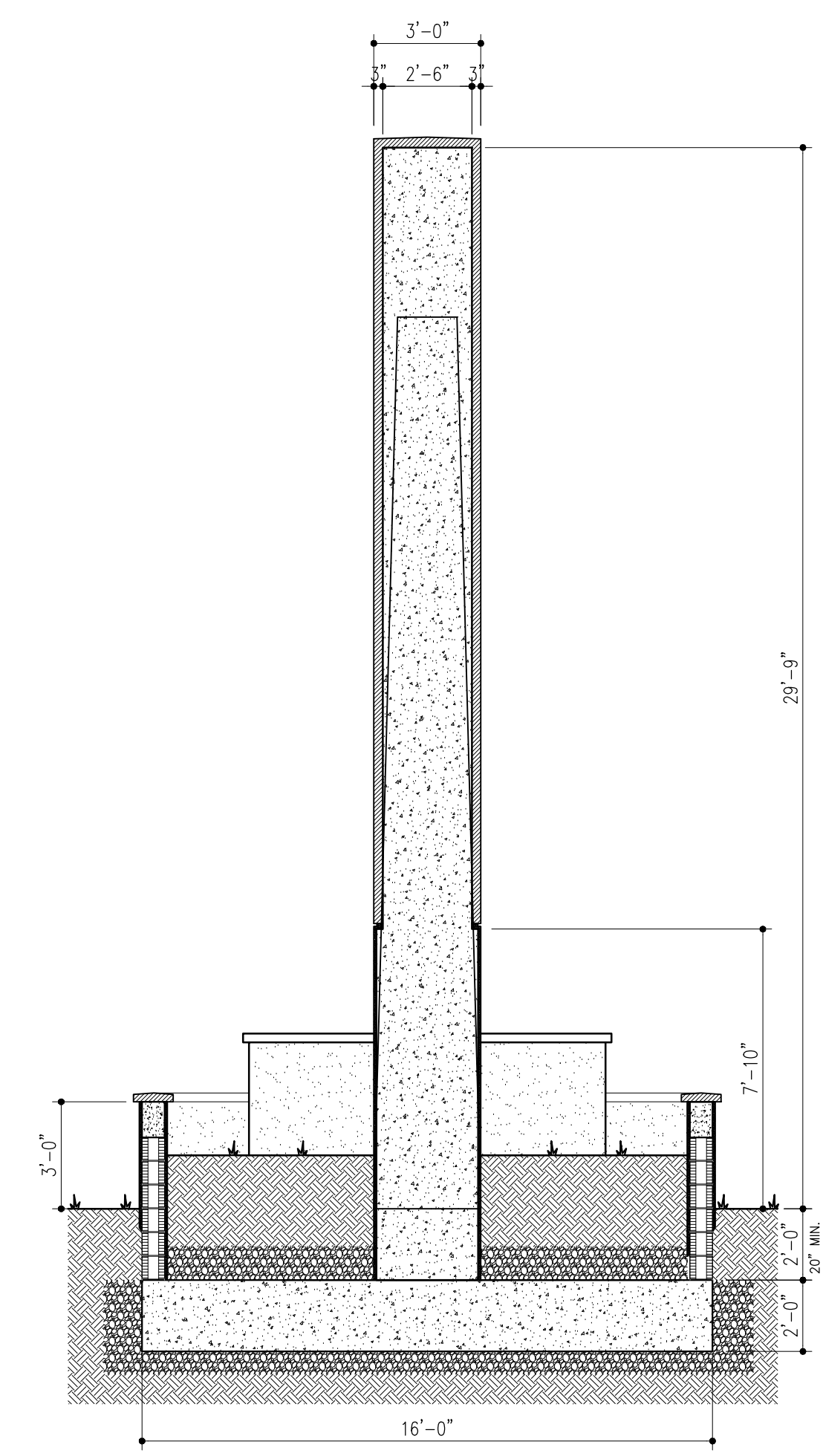
FLOOR PLAN - TYPE A1  
1/4"=1'-0" 1



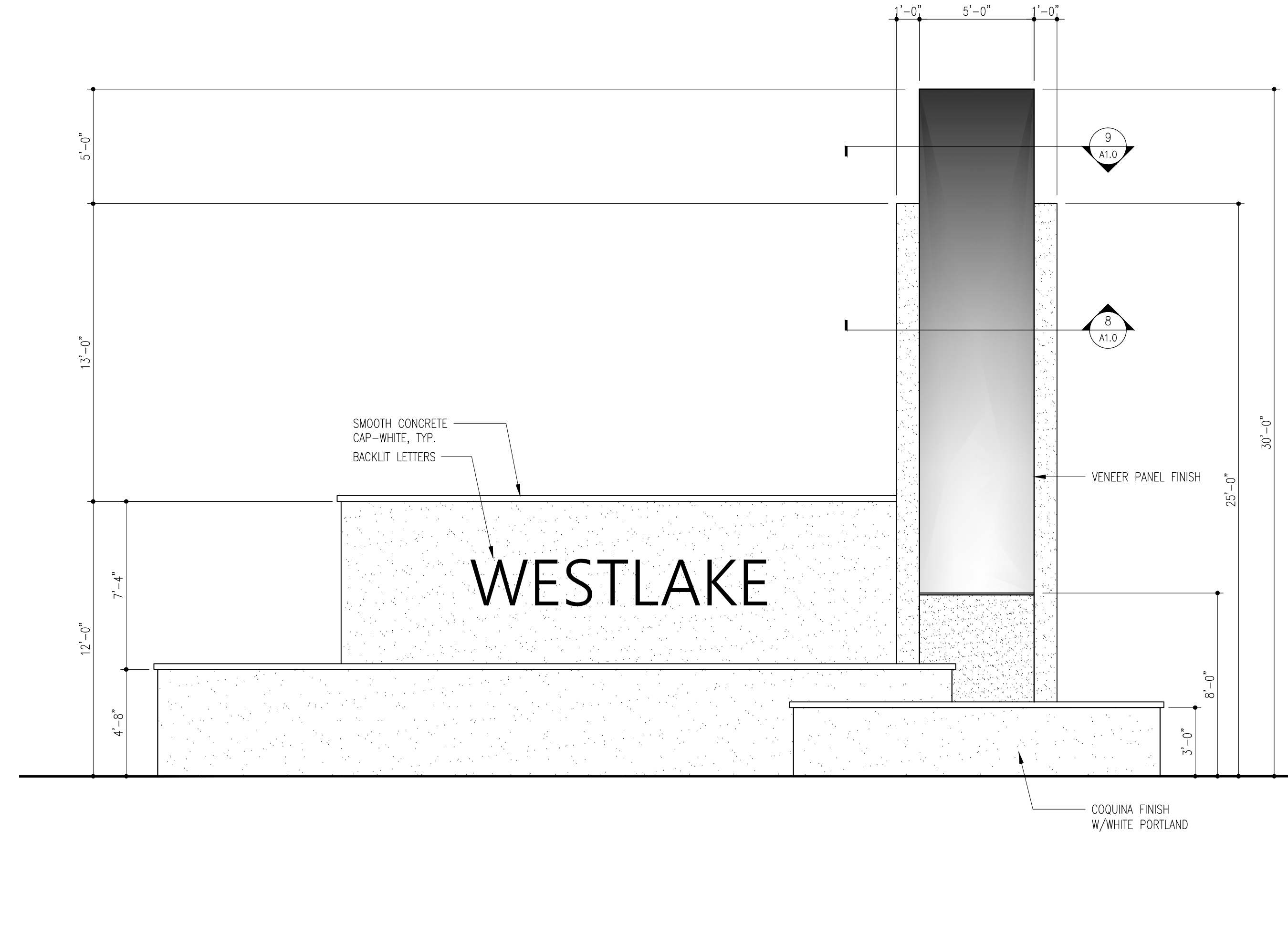
SECTION  
1/4"=1'-0" 7



SECTION  
1/4"=1'-0" 6



SECTION  
1/4"=1'-0" 5



FRONT ELEVATION  
1/4"=1'-0" 2

1600 SOUTH DIXIE HWY., SUITE 400  
BOCA RATON, FLORIDA 33432  
PHONE 561-391-0081 FAX 561-391-0085  
EMAIL mail@rwb-arch.com



PROJECT # 16-005  
DATE 2-26-16  
SHEET #

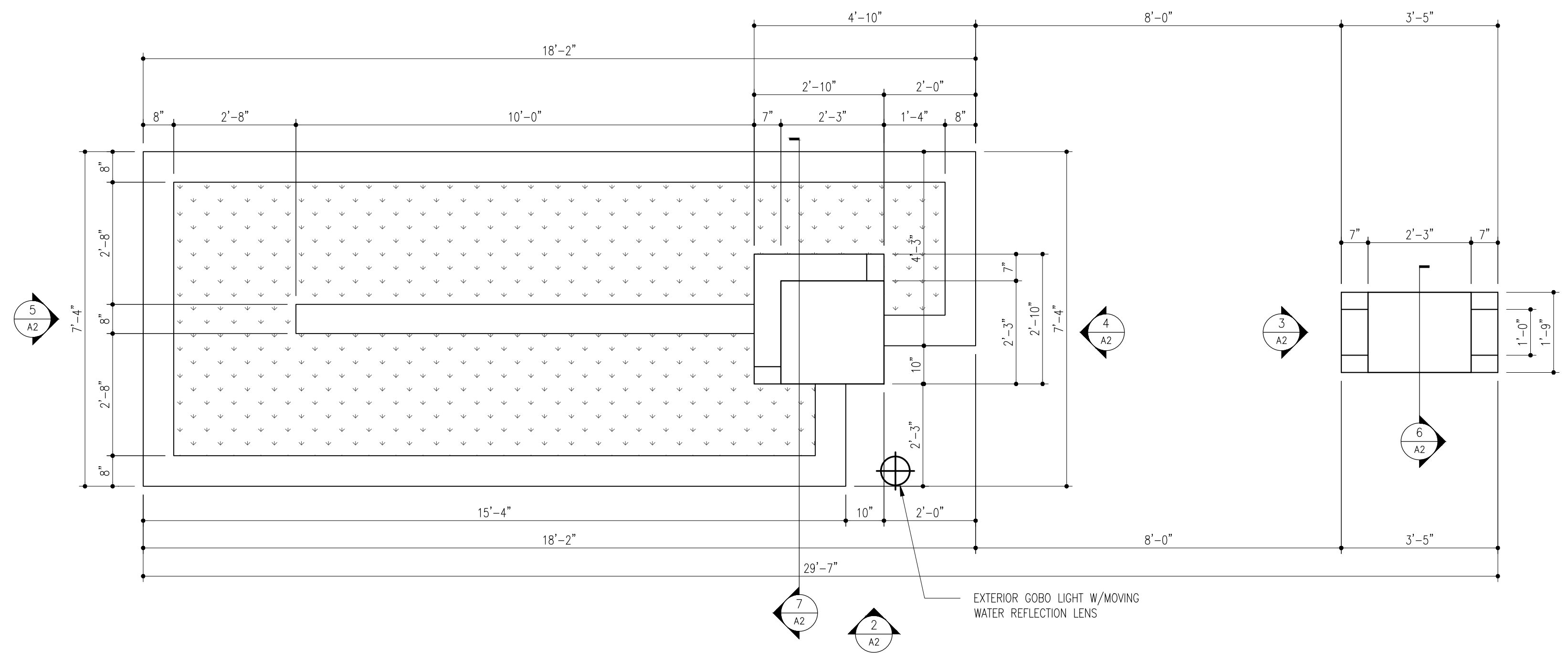
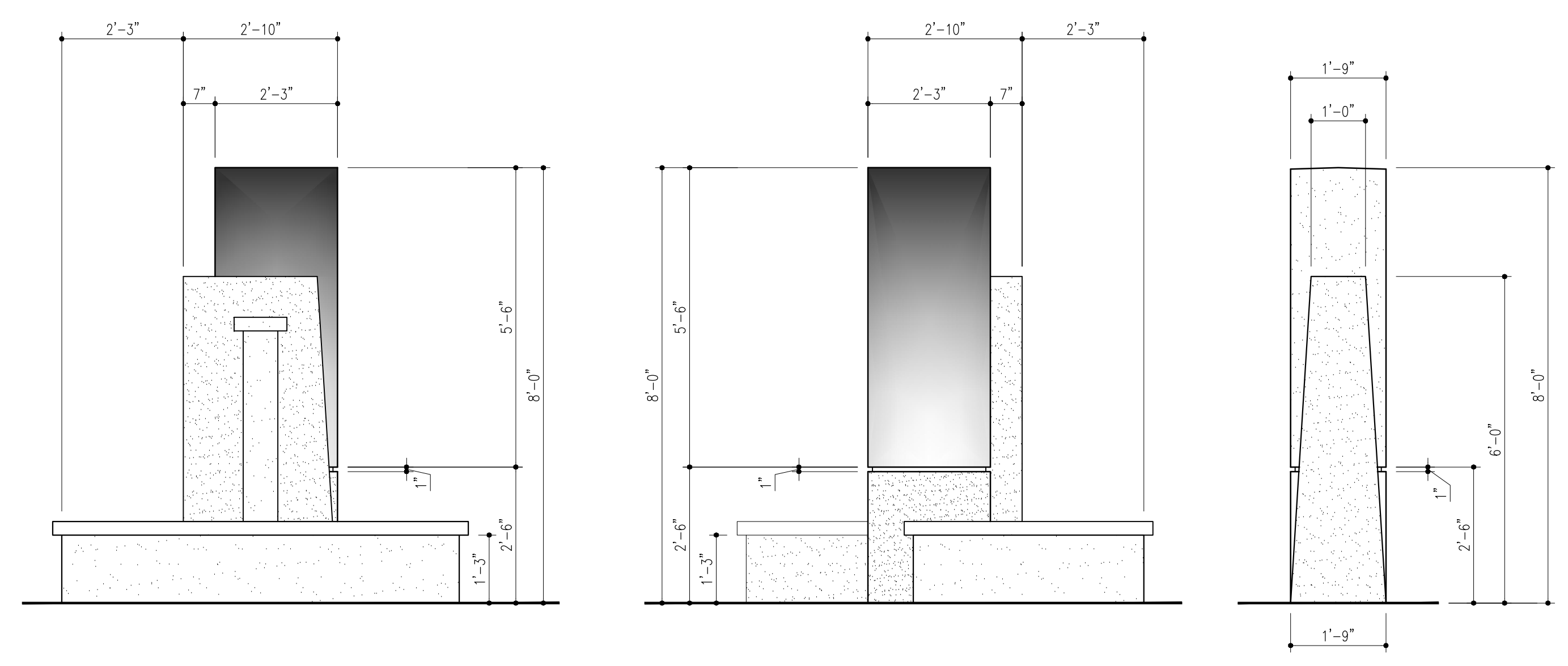
A1  
JUAN C. LINARES

REVISIONS

1.
2.
3.
4.
5.
6.
7.
8.
9.
10.

ALL AREA, DIMENSION, ARRANGEMENTS, AND PLANS INDICATED OR REPRESENTED BY THIS DRAWING ARE OWNED BY AND PROPERTY OF THE OFFICE, AND WORKS CREATED, EVALUATED, AND DEVELOPED FOR USE OF, AND IN CONNECTION WITH THE SPECIFIED PROJECT, NONE OF WHICH SHALL BE REPRODUCED, ARRANGED, AND PLANS SHALL BE USED BY OR DISCLOSED TO ANY PERSON, FIRM, OR CORPORATION FOR ANY PURPOSE WITHOUT WRITTEN PERMISSION OF RWB LINARES ARCHITECTURE, INC.

MINTO WEST  
ENTRY MONUMENTS  
TYPE A2

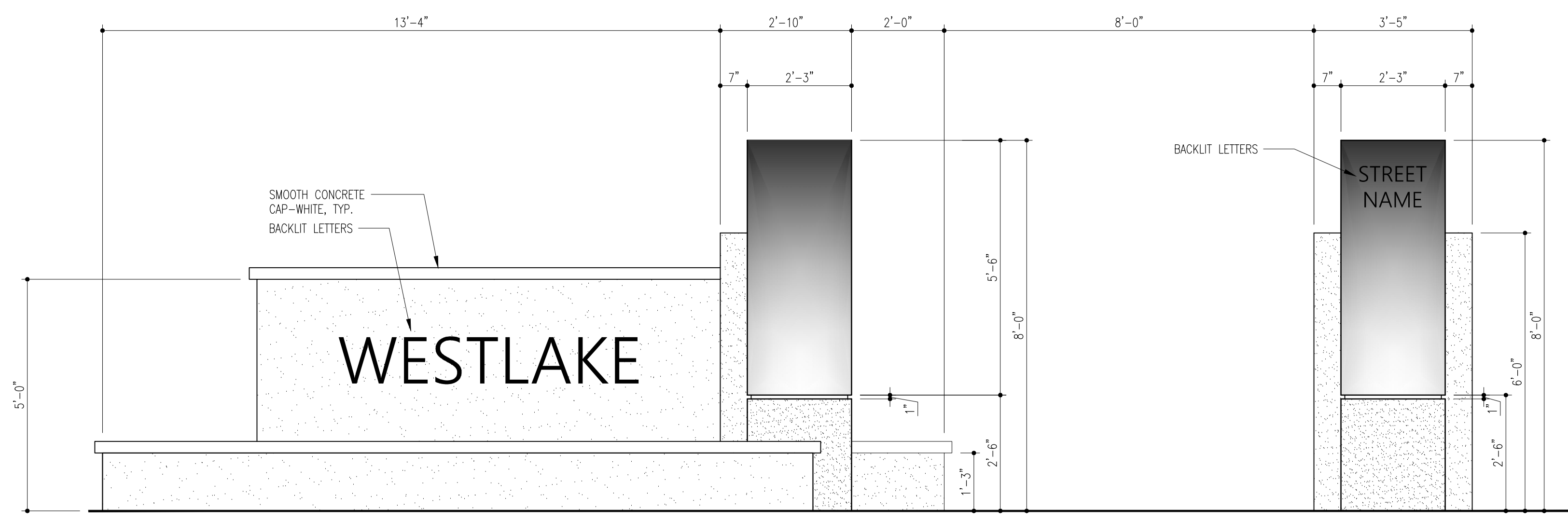
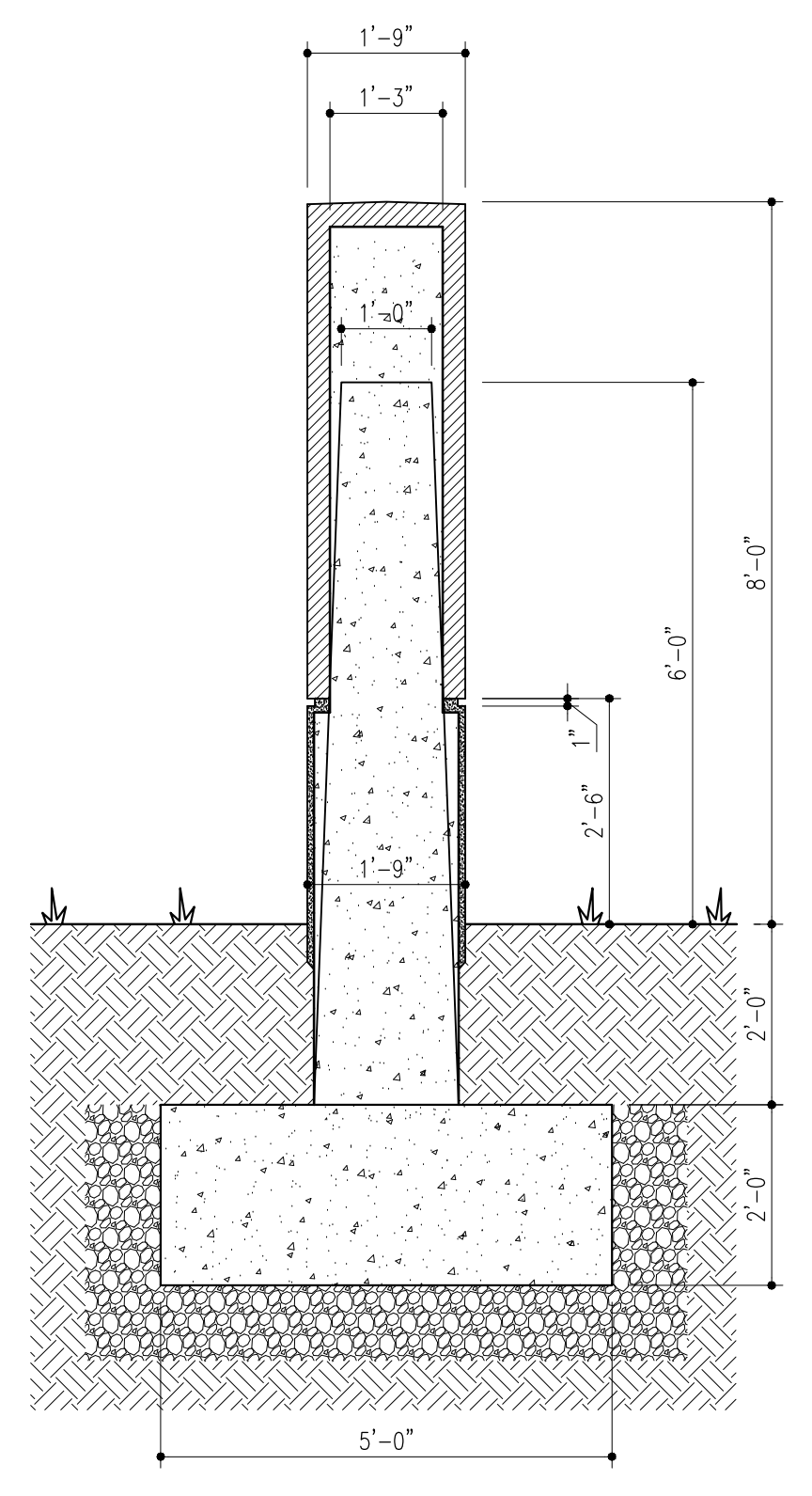
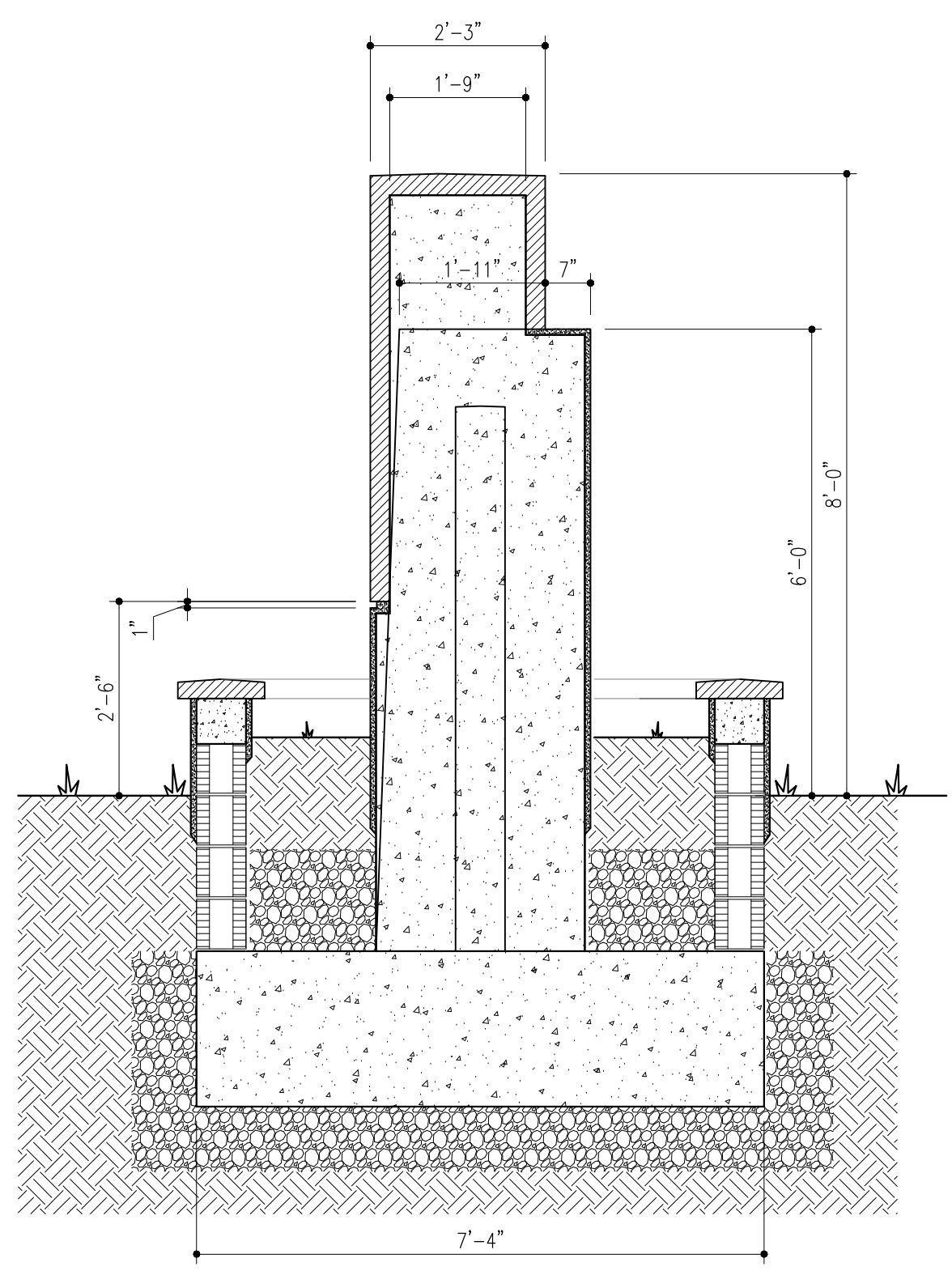


SIDE ELEVATION 5  
1/2"=1'-0"

SIDE ELEVATION 4  
1/2"=1'-0"

SIDE ELEVATION 3  
1/2"=1'-0"

FLOOR PLAN - TYPE A3  
1/2"=1'-0"



SECTION 7  
1/2"=1'-0"

SECTION 6  
1/2"=1'-0"

FRONT ELEVATION 2  
1/2"=1'-0"

1600 SOUTH DIXIE HWY., SUITE 400  
BOCA RATON, FLORIDA 33432  
PHONE 561-391-0081 FAX 561-391-0085  
EMAIL mail@rwb-arch.com

**RWB**  
*L i n a r e s*  
ARCHITECTURE

PROJECT # 16-005  
DATE 2-26-16  
SHEET #

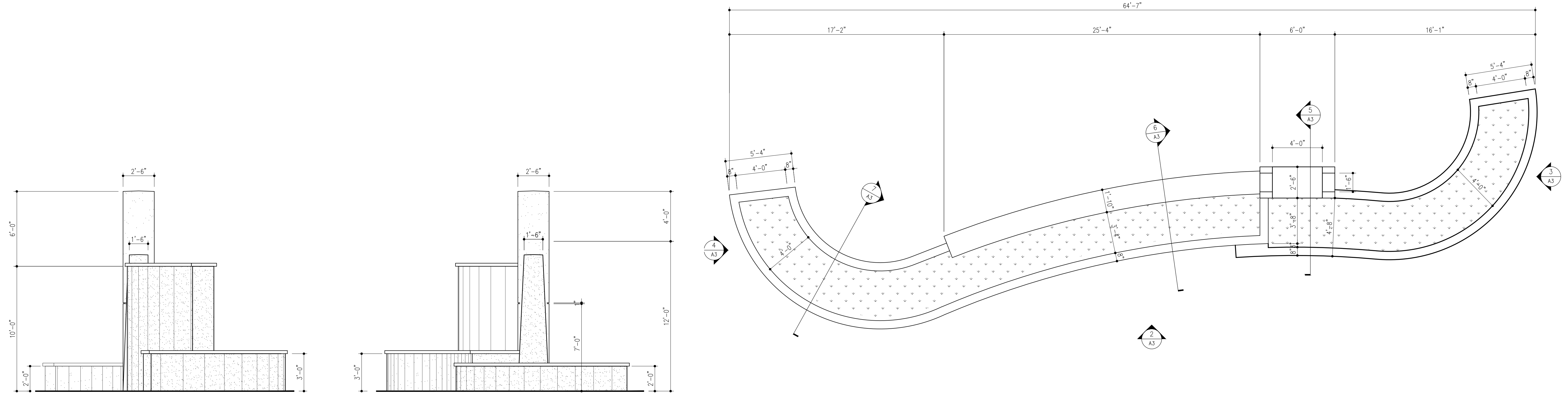
A2  
JUAN C. LINARES

REVISIONS

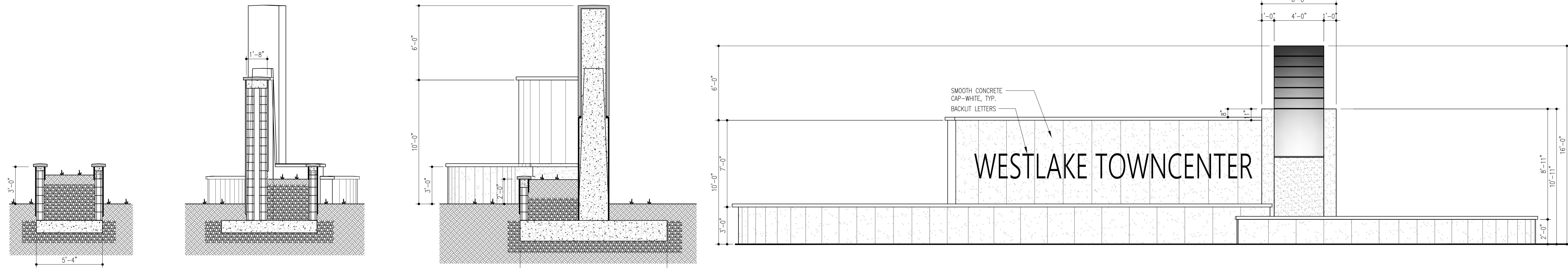
1.
2.
3.
4.
5.
6.
7.
8.
9.
10.

ALL IDEAS, DESIGN, ARRANGEMENTS, AND PLANS INDICATED OR REPRESENTED BY THIS DRAWING ARE OWNED BY AND PROPERTY OF THE OFFICE, AND WHERE CREATED, ENHANCED, AND DEVELOPED FOR USE, AND IN CONNECTION WITH THE SPECIFIED PROJECT, NONE OF SUCH IDEAS, DESIGN, ARRANGEMENTS, AND PLANS SHALL BE USED BY OR DISCLOSED TO ANY PERSON, FIRM, OR CORPORATION FOR ANY PURPOSE WITHOUT WRITTEN PERMISSION OF RWB LINARES ARCHITECTURE, INC.

MINTO WEST  
ENTRY MONUMENTS  
TYPE A3



SIDE ELEVATION (PLANTER SIDE) 1/4"=1'-0"	4	SIDE ELEVATION (TOWER SIDE) 1/4"=1'-0"	3	FLOOR PLAN - TYPE A2 1/4"=1'-0"	1
---	---	---	---	------------------------------------	---



SECTION 1/4"=1'-0"	7	SECTION 1/4"=1'-0"	6	SECTION 1/4"=1'-0"	5	FRONT ELEVATION 1/4"=1'-0"	2
-----------------------	---	-----------------------	---	-----------------------	---	-------------------------------	---

1600 SOUTH DIXIE HWY., SUITE 400  
BOCA RATON, FLORIDA 33432  
PHONE 561-391-0081 FAX 561-391-0085  
EMAIL mail@rwb-arch.com



PROJECT # 16-005  
DATE 2-26-16  
SHEET #

A3  
JUAN C. LINARES