

FOUNDATION PLAN NOTES:

- TOP OF SLAB ELEVATION = 0'-0" U.N.O.
TOP OF EXTERIOR FOOTING ELEVATION = (-) 1'-4" U.N.O.
< > INDICATES TOP OF FOOTING ELEVATION.
- CENTER ALL FOOTINGS BELOW WALL OR COLUMN U.N.O.
- ALL FOOTING REINFORCING TO BE BOTTOM BARS U.N.O.
- REFER TO ARCHITECTURAL/CIVIL FOR EXTERIOR SLAB AND SIDEWALK INFORMATION.
- REFER TO ARCHITECTURAL DRAWINGS FOR ALL DIMENSIONS NOT SHOWN.
- REFER TO THIS PLAN FOR MASONRY CONTROL JOINT (M.C.J.) LOCATIONS. REFER TO 3/S4.1 FOR MASONRY CONTROL JOINT DETAIL.
- ALL WALL FOOTINGS TO BE TYPE "WF2" U.N.O.
- PROVIDE CORNER BARS AT ALL CORNERS AND INTERSECTIONS OF CONTINUOUS FOOTINGS. REFER TO DETAIL 2/S4.1 FOR MORE INFO.
- REFER TO 1/S2.1 FOR DESIGN WIND CRITERIA.

LEGEND

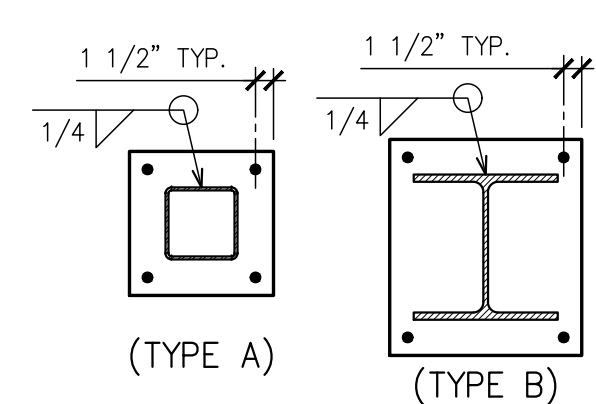
- 8" MASONRY WALL IN RUNNING BOND w/ #6 VERT. IN FULLY GROUTED CELL AT 24" O.C. MAX. AND AT ALL WALL INTERSECTIONS AND SIDES OF OPENINGS. HOOK INTO FOOTING AND ROOF TIE BEAM (TYP.). REFER TO PLAN FOR ADD'L./SPECIFIC REINF. REQUIREMENTS.
- 12" TAPERED MASONRY WING WALL w/ #6 VERT. IN FULLY GROUTED CELL AT 16" O.C. MAX.
- METAL STUD WALL FRAMING AT 16" O.C. MAX. REFER TO SECTIONS FOR SIZE, GAGE, AND SPACING.
- SAW-CUT SLAB CONTROL JOINT. REFER TO 1/S4.1.
- EXTENT OF FUTURE SLAB (COMPACTED GRADE)
- EXTENT OF 4" THICK CONC. (3,000 PSI) SLAB-ON-GRADE w/ 6#6 - W1.4xW1.4 W.W.F. ON 10 MIL VAPOR BARRIER OVER COMPACTED AND TERMITE TREATED SOIL. COORD. w/ ARCH.

FOOTING SCHEDULE

MARK	SIZE	DEPTH	REINFORCING	COMMENTS
WF2	2'-0" WIDE X CONT.	1'-0"	(3) #5 CONT. W/ #5 TRANSV. AT 48" O.C. BOTTOM	WALL FOOTING
F5	5'-0" X 5'-0"	1'-0"	(5) #5 EACH WAY, BOTTOM	COLUMN FOOTING
F5A	5'-0" X 5'-0"	1'-0"	(5) #5 EACH WAY, TOP & BOTTOM	COLUMN FOOTING
F6	6'-0" X 6'-0"	1'-2"	(7) #5 EACH WAY, BOTTOM	COLUMN FOOTING
F7	7'-0" X 7'-0"	1'-4"	(7) #6 EACH WAY, TOP AND BOTTOM	COLUMN FOOTING
F8	8'-0" X 8'-0"	1'-6"	(8) #6 EACH WAY, TOP AND BOTTOM	COLUMN FOOTING

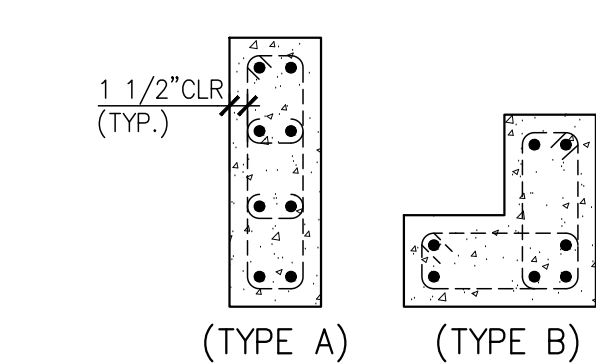
STEEL COLUMN SCHEDULE

MARK	COLUMN SIZE	BASE PLATE	BASE PLATE TYPE	COMMENTS
HSS-5	HSS 5 X 5 X 3/8	3/4 X 12 X 12	TYPE A	(4) 3/4" x 14" F1554-GR36 ANCHOR BOLTS
HSS-7	HSS 7 X 7 X 3/8	3/4 X 14 X 14	TYPE A	(4) 3/4" x 14" F1554-GR36 ANCHOR BOLTS
WF-12	W 12 X 65	3/4 X 18 X 16	TYPE C	(4) 3/4" x 14" F1554-GR36 ANCHOR BOLTS



CONCRETE COLUMN SCHEDULE

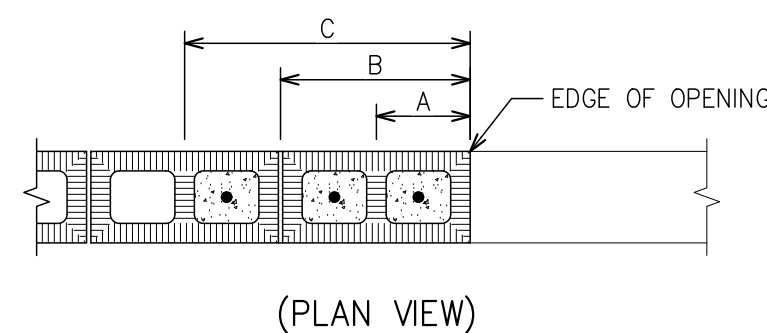
MARK	SIZE	VERTICAL REINFORCING	HORIZONTAL TIES	COMMENTS
C1	8" X 24"	(8) #6	#3 AT 8"	TYPE A
C2	8" X 8" X 16"	(7) #6	#3 AT 8"	TYPE B



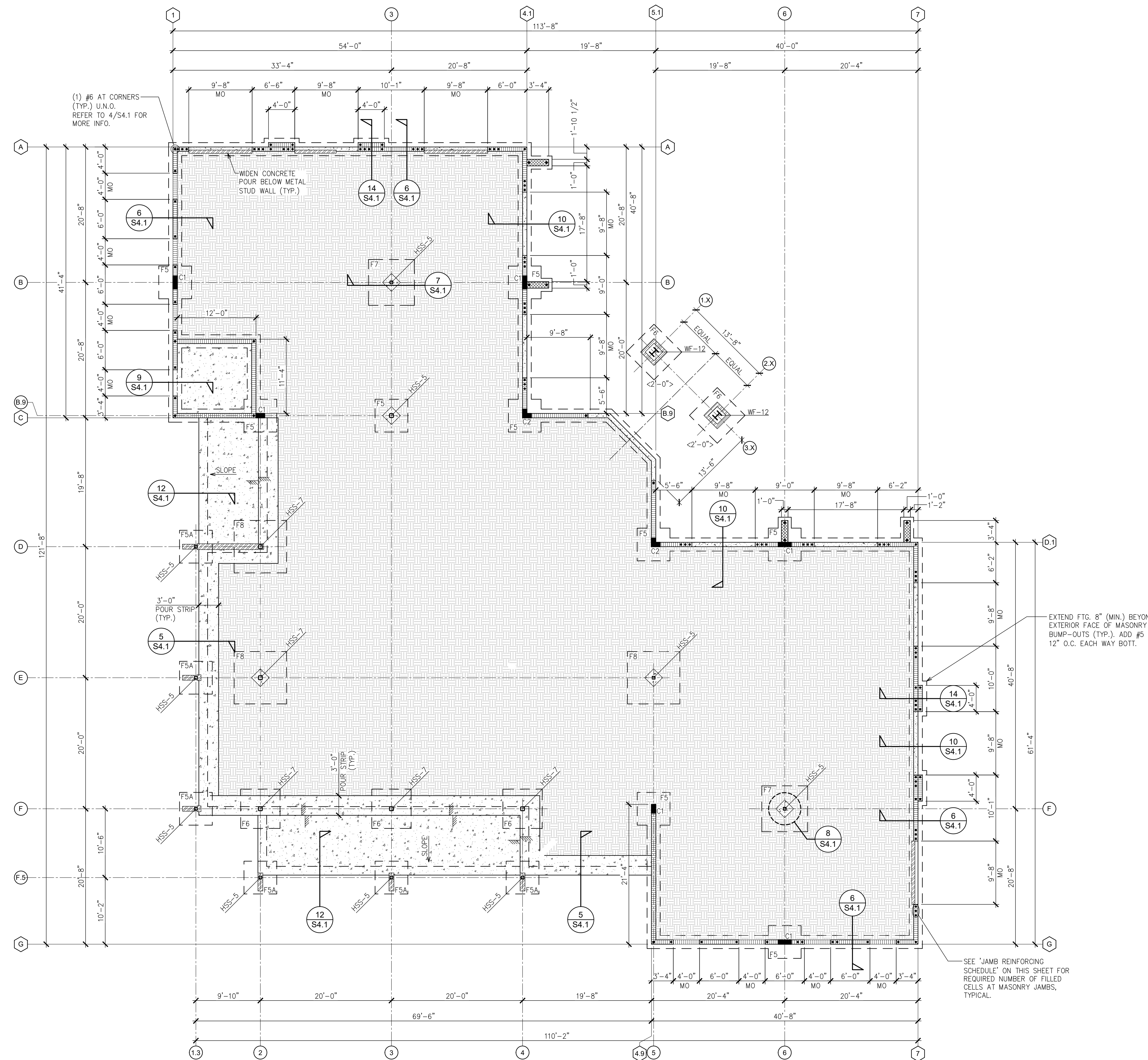
- TIE THE CONCRETE COLUMNS INTO ADJACENT LOAD-BEARING MASONRY USING ONE OF THE FOLLOWING METHODS:
 - INSTALL DOVETAIL ANCHORS AT 16" O.C. VERTICAL
 - TURN 1/2 BLOCK ON ITS SIDE EVERY OTHER COURSE TO ALLOW CONCRETE POUR TO BE KEED INTO MASONRY.
- REBAR DETAILER TO COORDINATE w/ DETAIL 13/S4.1
- EXTEND HORIZONTAL JOINT REINFORCING 2" INTO THE COLUMNS, TYP.
- ALL CONCRETE COLUMNS SHALL BE CONTINUOUS FROM FOUNDATION TO MASONRY ROOF TIE BEAM. HOOK VERTICAL BARS WITH THE BEAM BARS.

JAMB REINFORCEMENT SCHEDULE

MARK	OPENING WIDTH	GROUTED CELL(S)	REINFORCEMENT PER CELL
A	LESS THAN 4'-8"	1	(1) #6 BARS
B	4'-8" TO LESS THAN 8'-0"	2	(1) #6 BARS
C	8'-0" AND GREATER	3	(1) #6 BARS



- NOTES:**
- REFER TO FOUNDATION PLAN FOR ADDITIONAL GROUTED CELL REQUIREMENTS.
 - ALL GROUTED CELL BARS AT JAMB TO HOOK INTO FOUNDATION AND THE BEAM.



FOUNDATION PLAN
SCALE: 1/8" = 1'-0"

BULLETIN LOG



WESTLAKE VISITOR CENTER
CITY OF WESTLAKE PALM BEACH COUNTY, FLORIDA

ISSUE DATE: - 09-30-16
ISSUED FOR: PERMIT BUILDING SHELL ONLY

REVISION LOG

EAG
PROFESSIONAL ENGINEERING INC. 35
14912 Mellissa Ann Dr. Lutz, FL 33538
PH: 813.763.1708 FAX: 813.889.4444
Alan C. Guenther, P.E. #53308 / C.A. #22813

ALAN C. GUENTHER, PE #53308

TO THE BEST OF THE KNOWLEDGE OF THE ARCHITECTS AND ENGINEERS, SAID PLANS AND SPECIFICATIONS COMPLY WITH THE APPLICABLE MINIMUM BUILDING CODES AND THE APPLICABLE MINIMUM FIRE SAFETY STANDARDS.

WESTLAKE VISITOR CENTER
PROJECT NAME
FOUNDATION PLAN
SHEET NAME
PROJECT NUMBER: 2016.037
DRAWN BY: MAK CHECKED BY: ACC
SCALE: SEE SHEET
S1.1
SHEET NUMBER