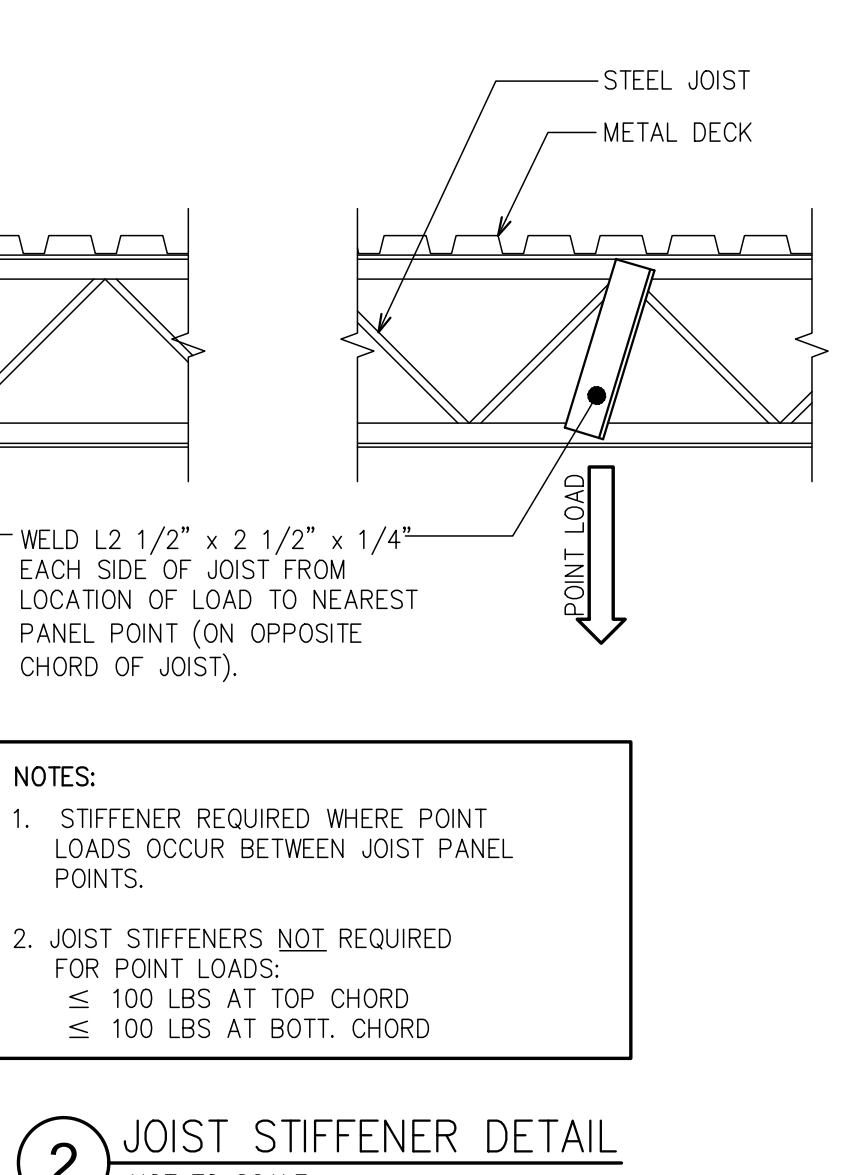
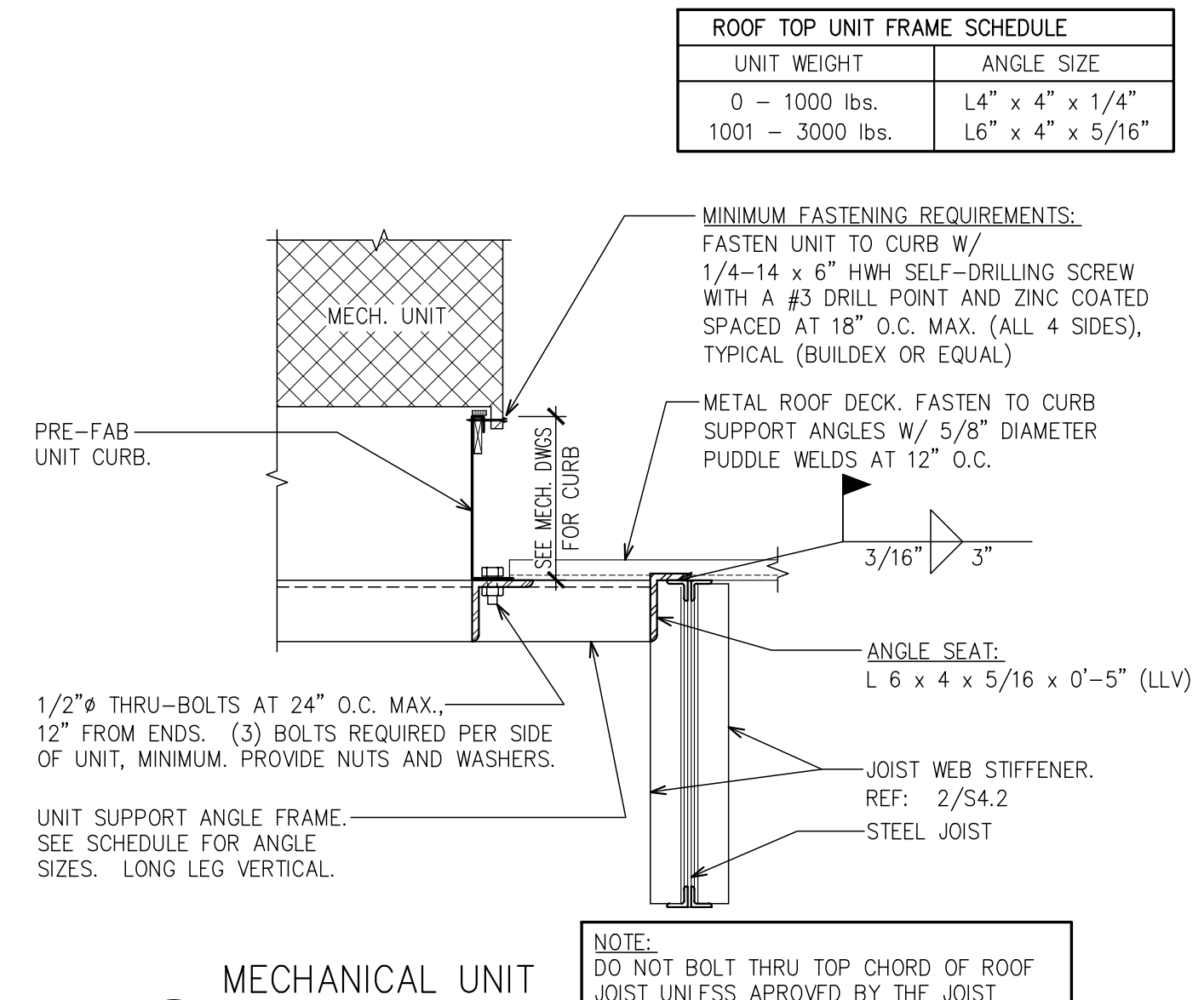


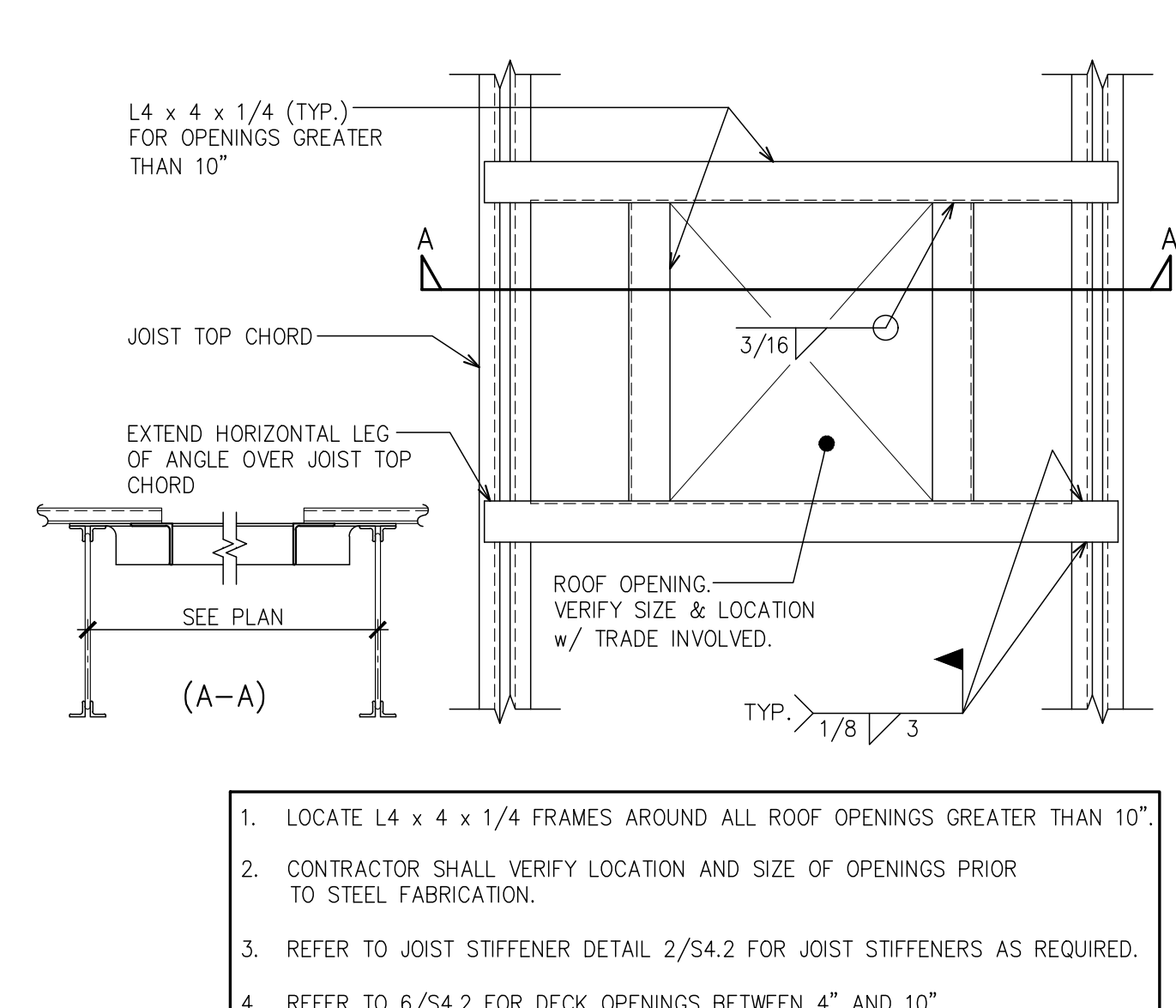
1 METAL DECK ATTACHMENT
NOT TO SCALE



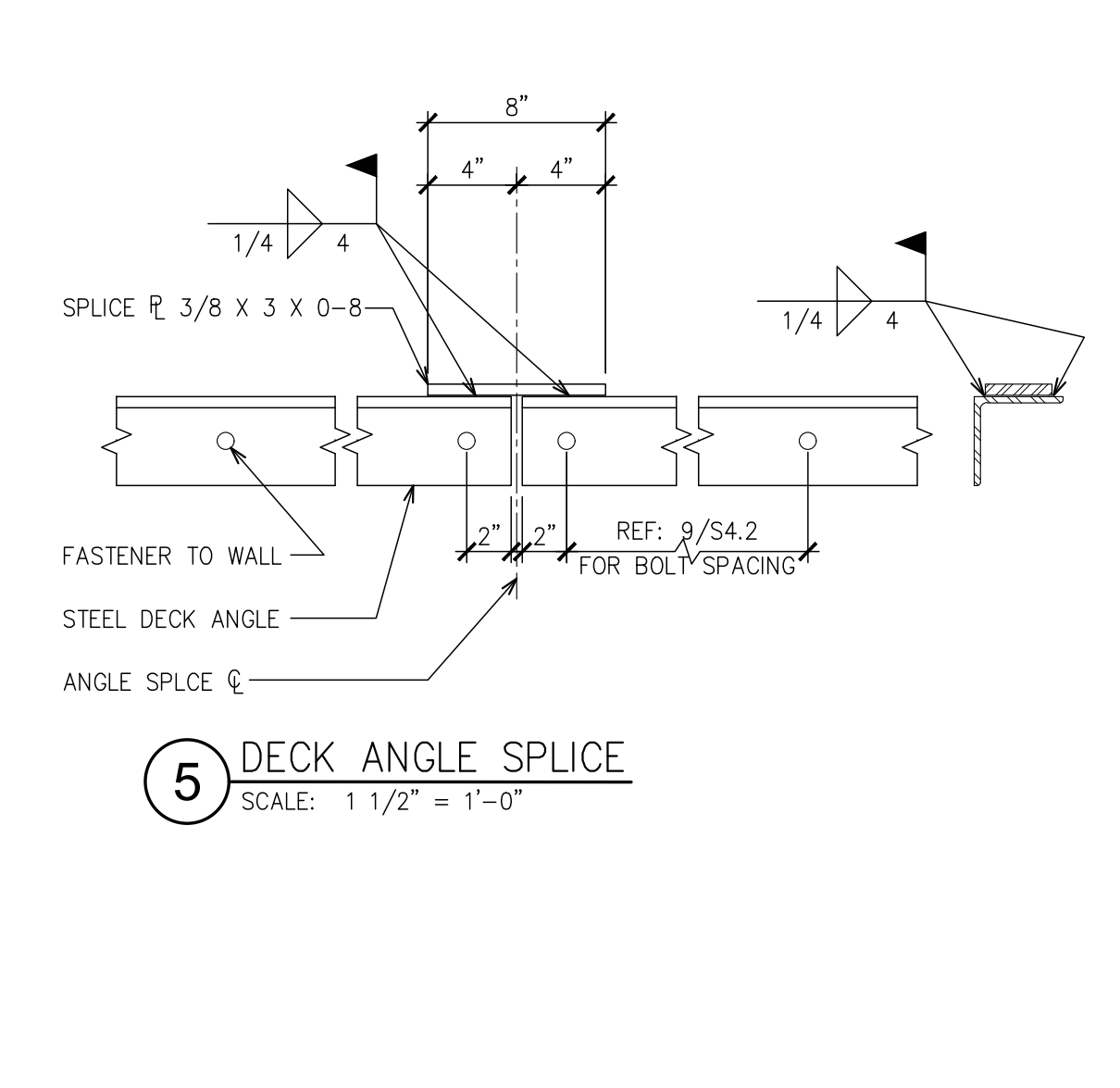
2 JOIST STIFFENER DETAIL
NOT TO SCALE



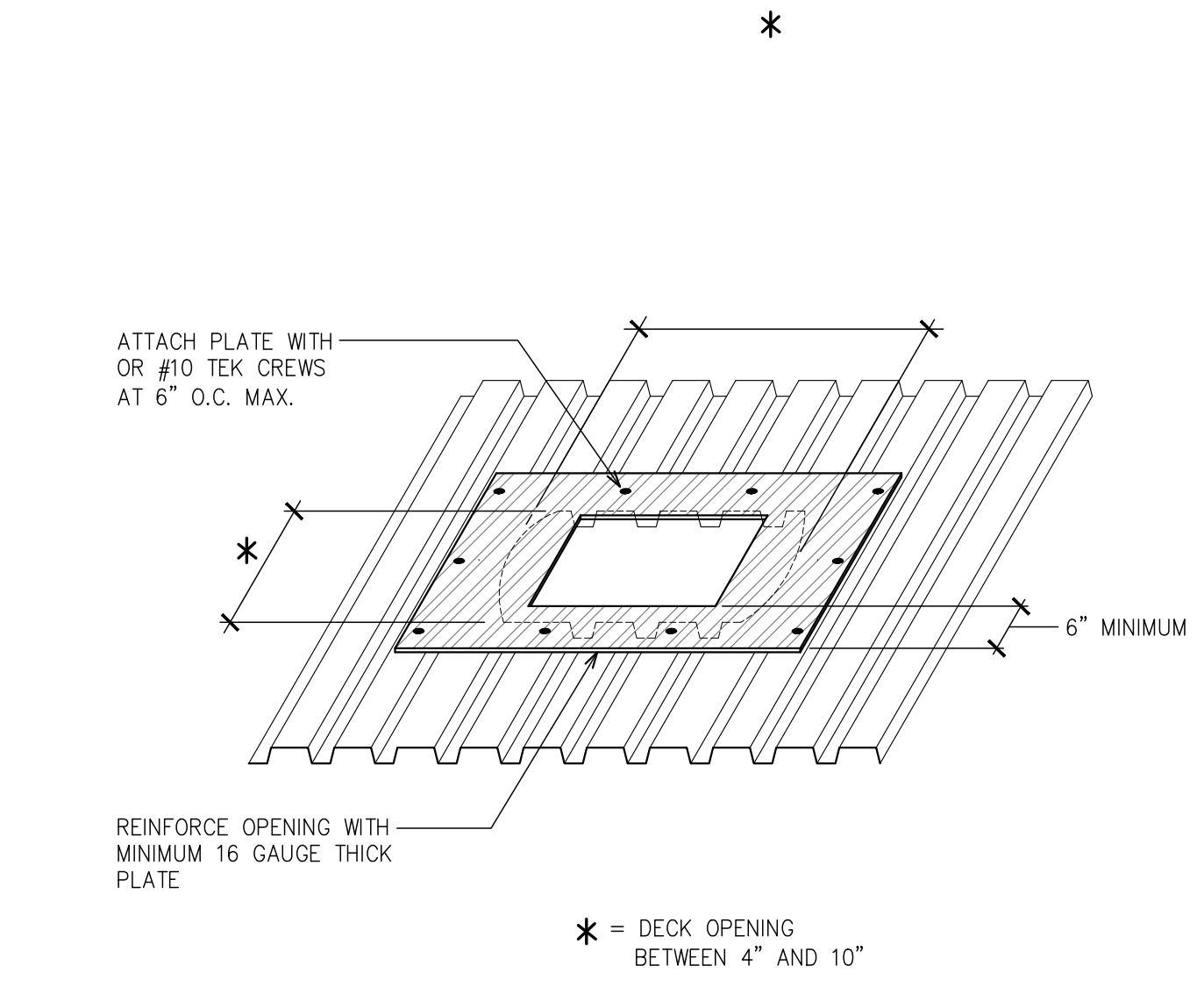
3 MECHANICAL UNIT FASTENING DETAIL
SCALE: 1" = 1'-0"



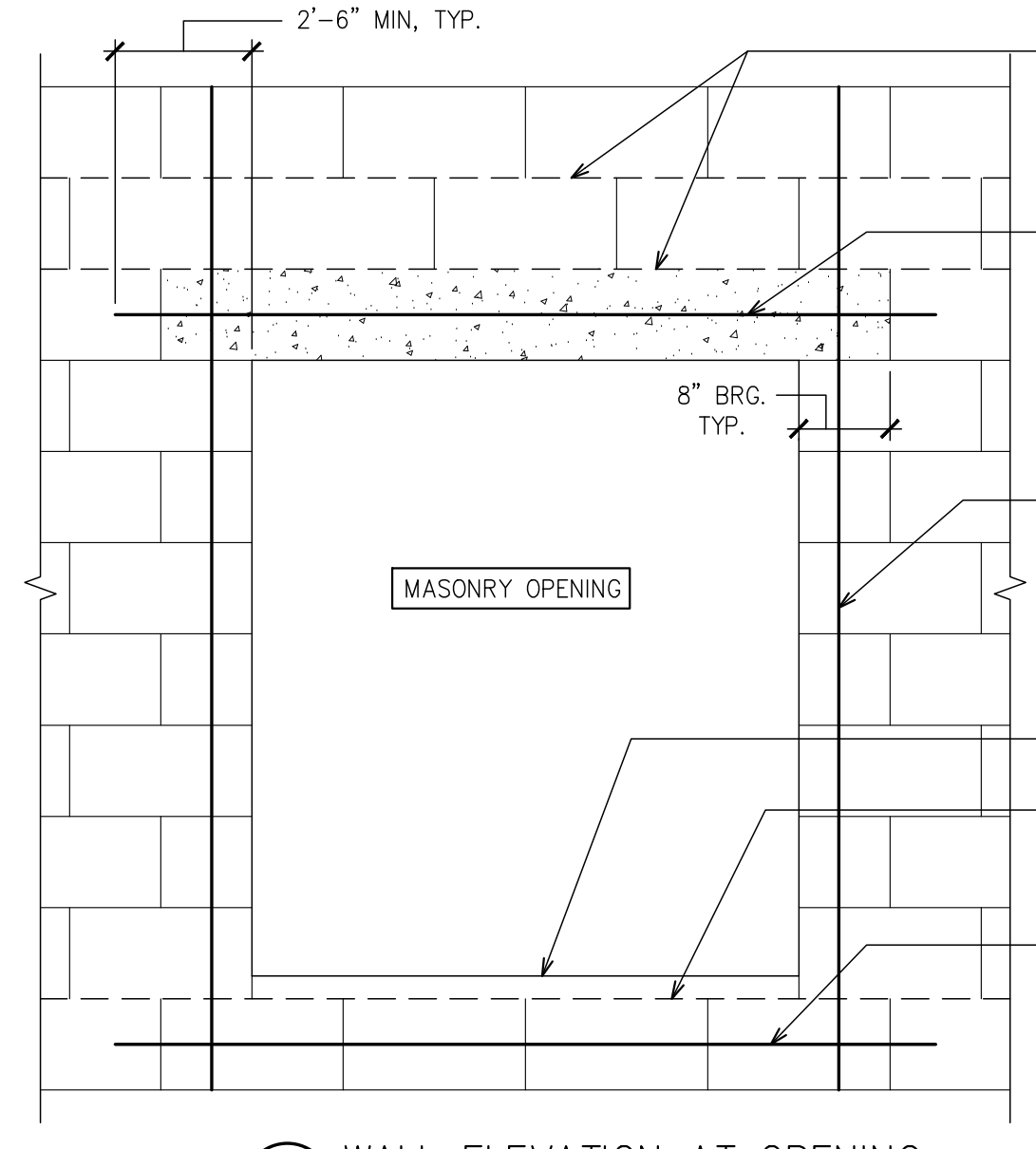
4 ROOF OPENING
NOT TO SCALE



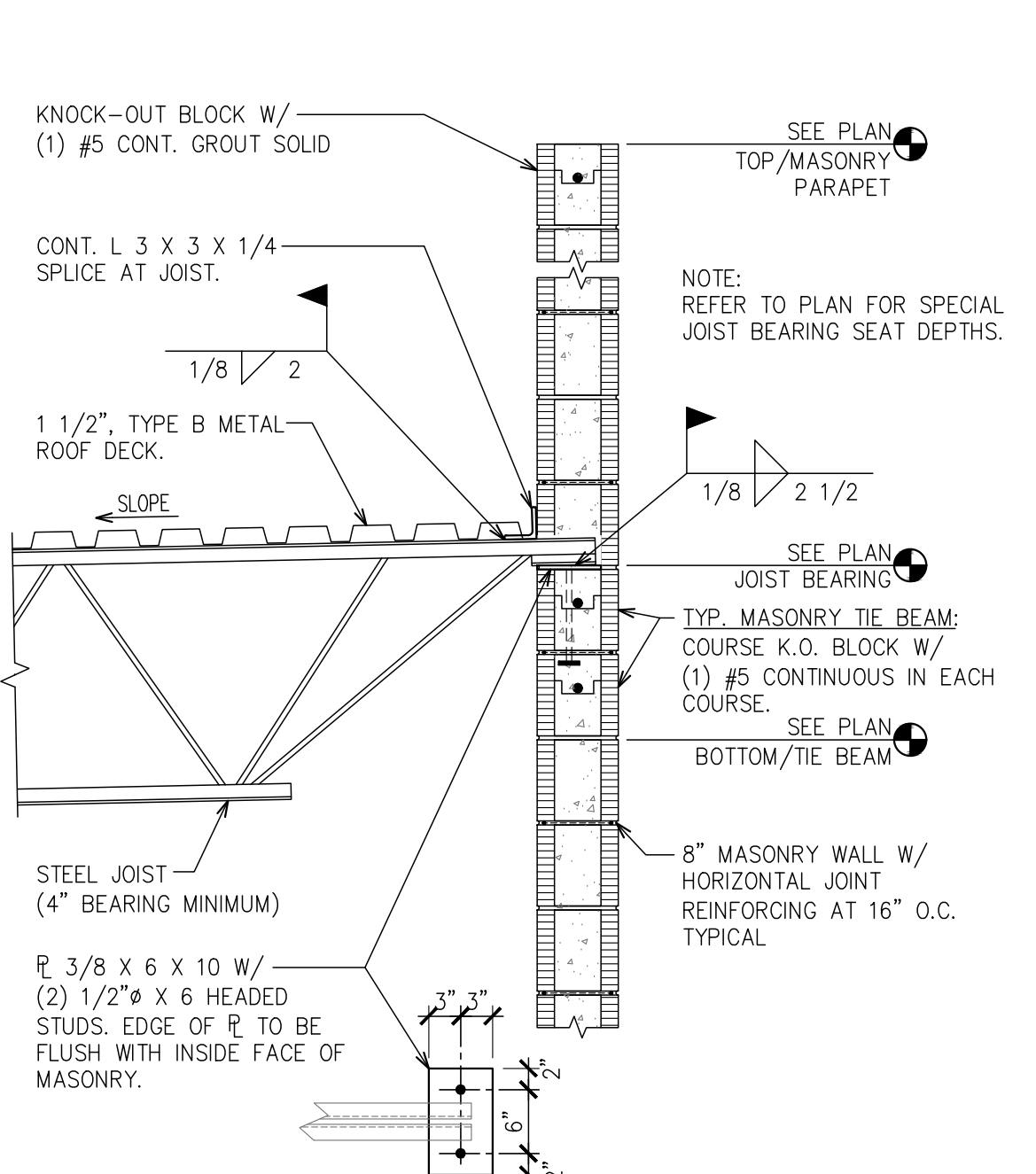
5 DECK ANGLE SPLICE
SCALE: 1 1/2" = 1'-0"



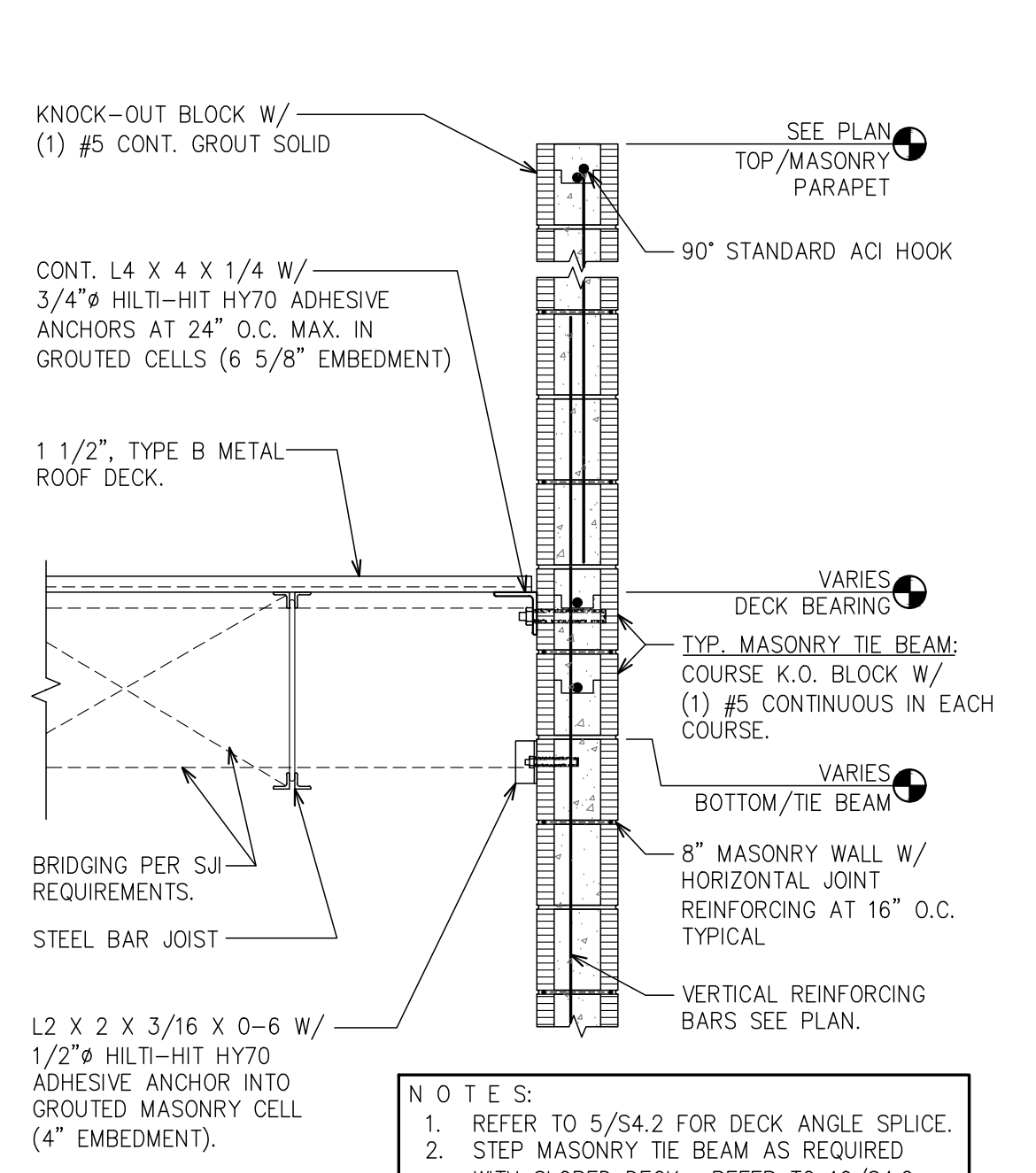
6 DECK REINFORCEMENT AT UNFRAMED ROOF OPENING
NOT TO SCALE



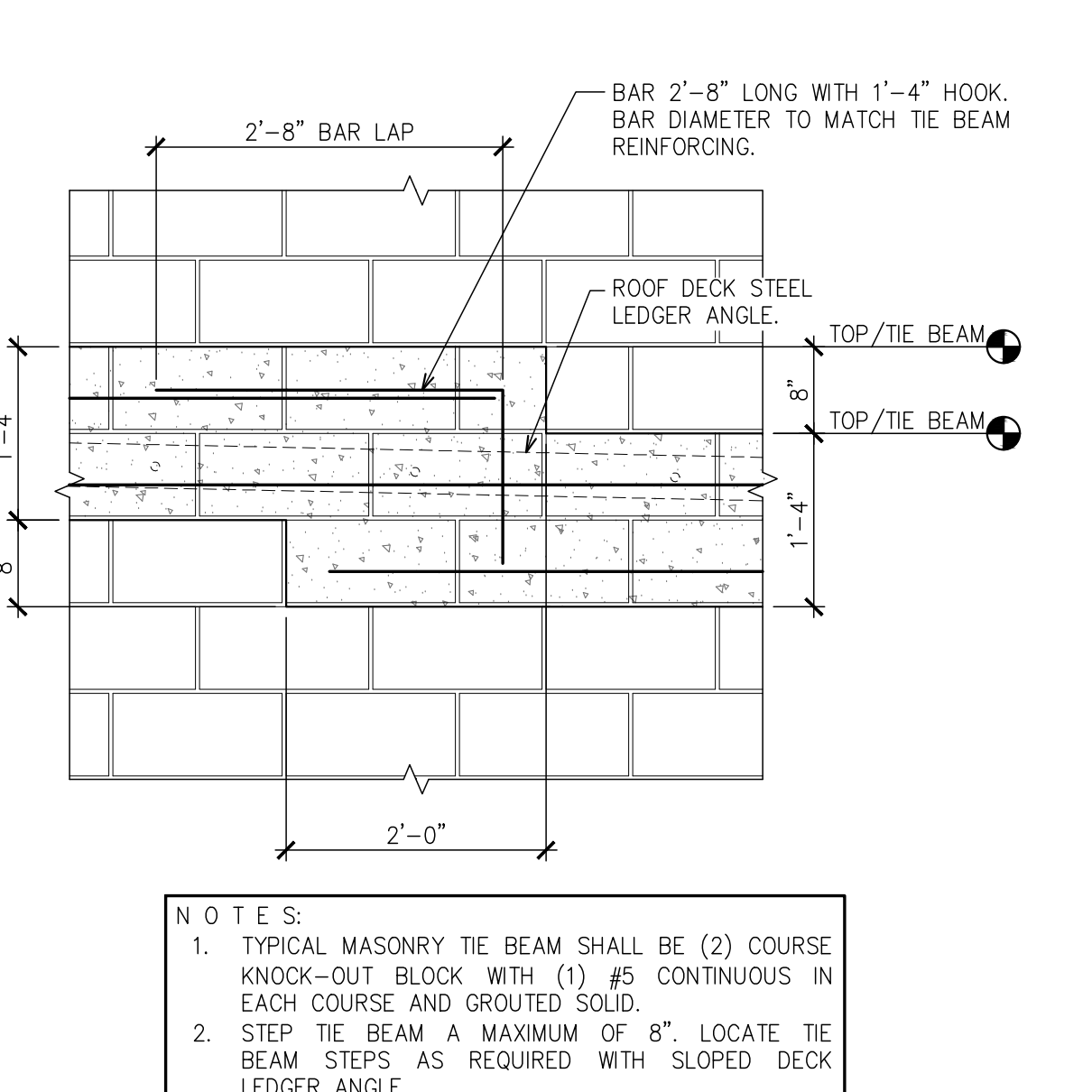
7 WALL ELEVATION AT OPENING
SCALE: 3/4" = 1'-0"



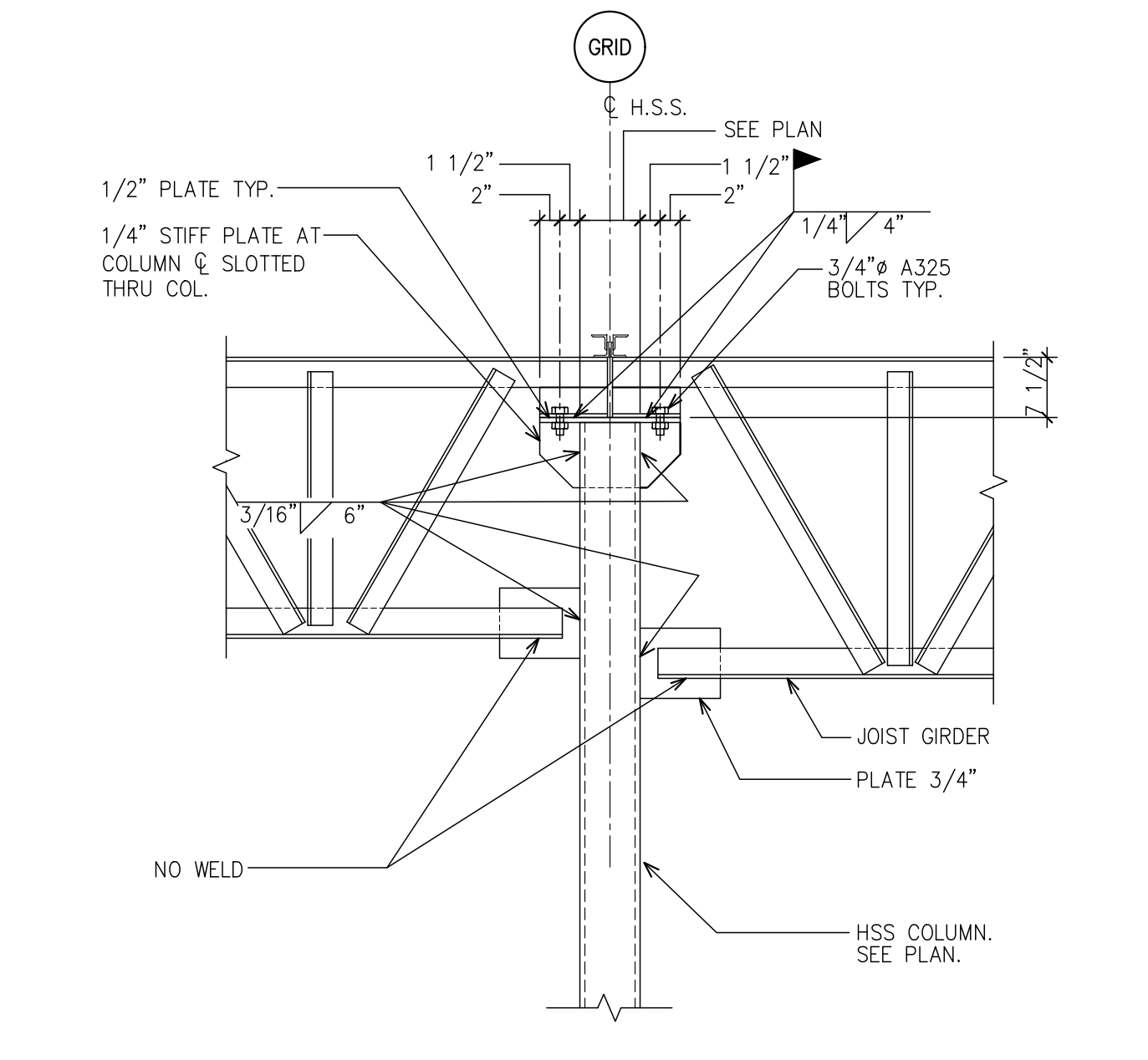
8 JOIST BEARING
SCALE: 3/4" = 1'-0"



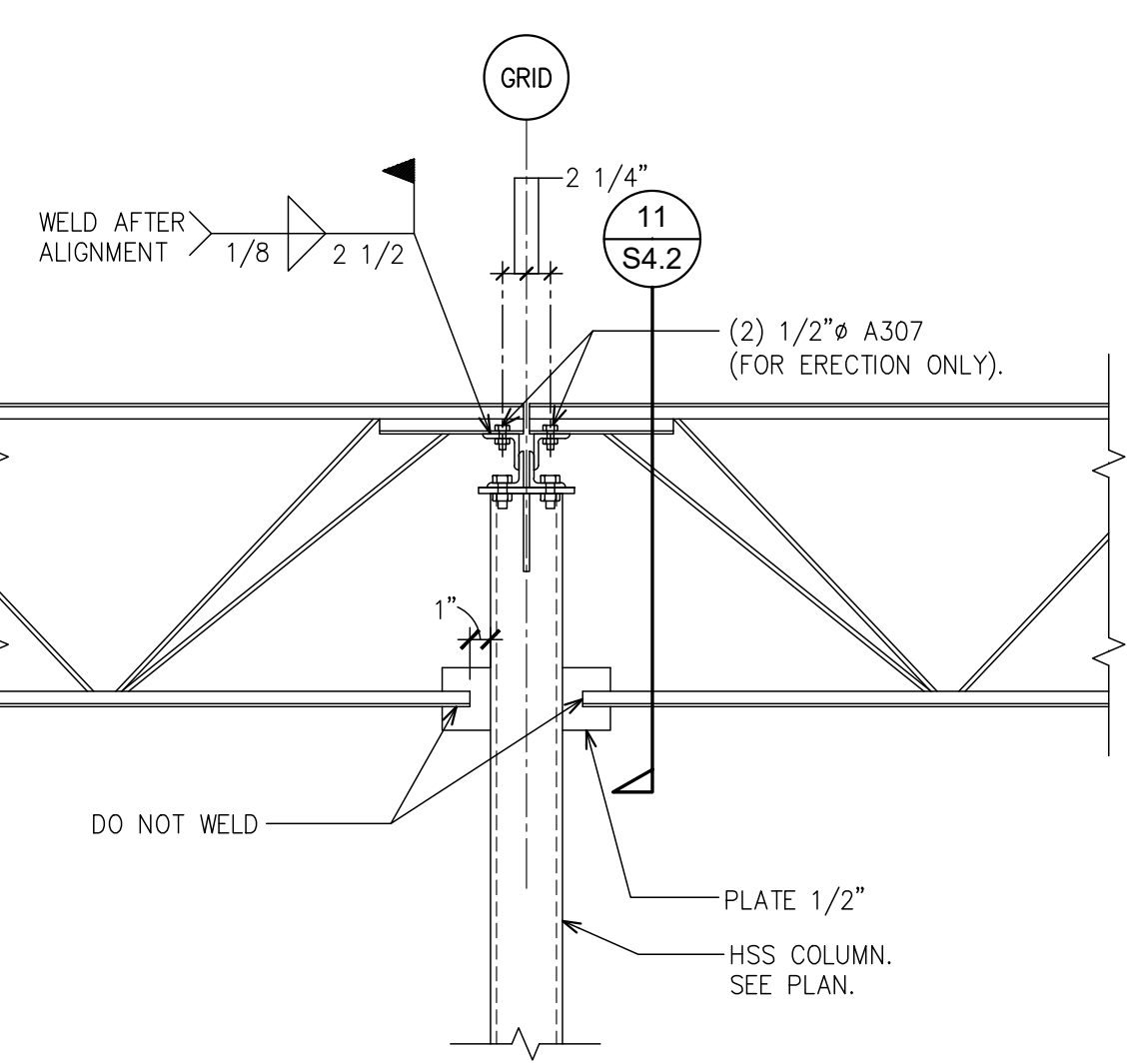
9 DECK BEARING
SCALE: 3/4" = 1'-0"



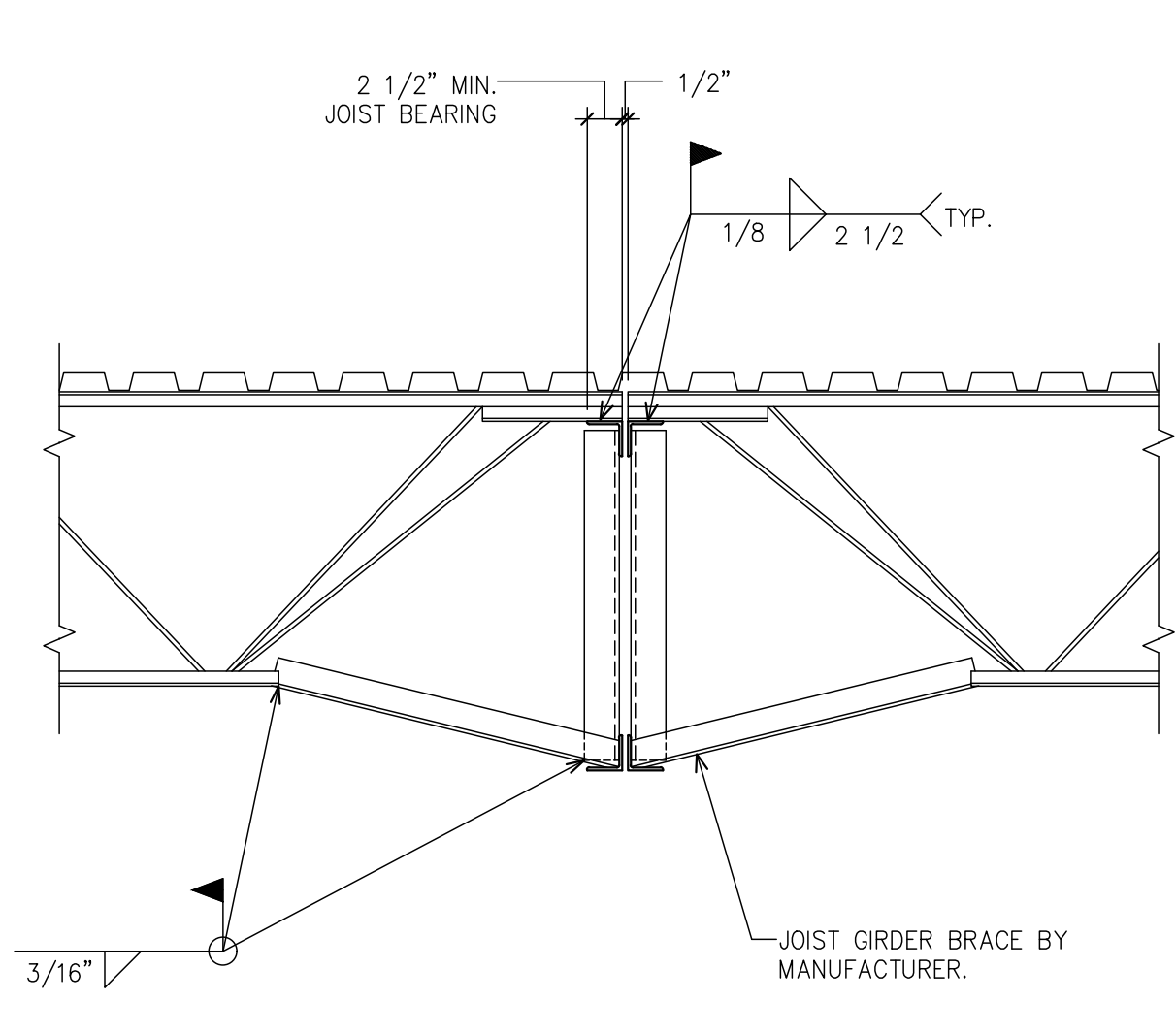
10 MASONRY TIE BEAM - STEP
NOT TO SCALE



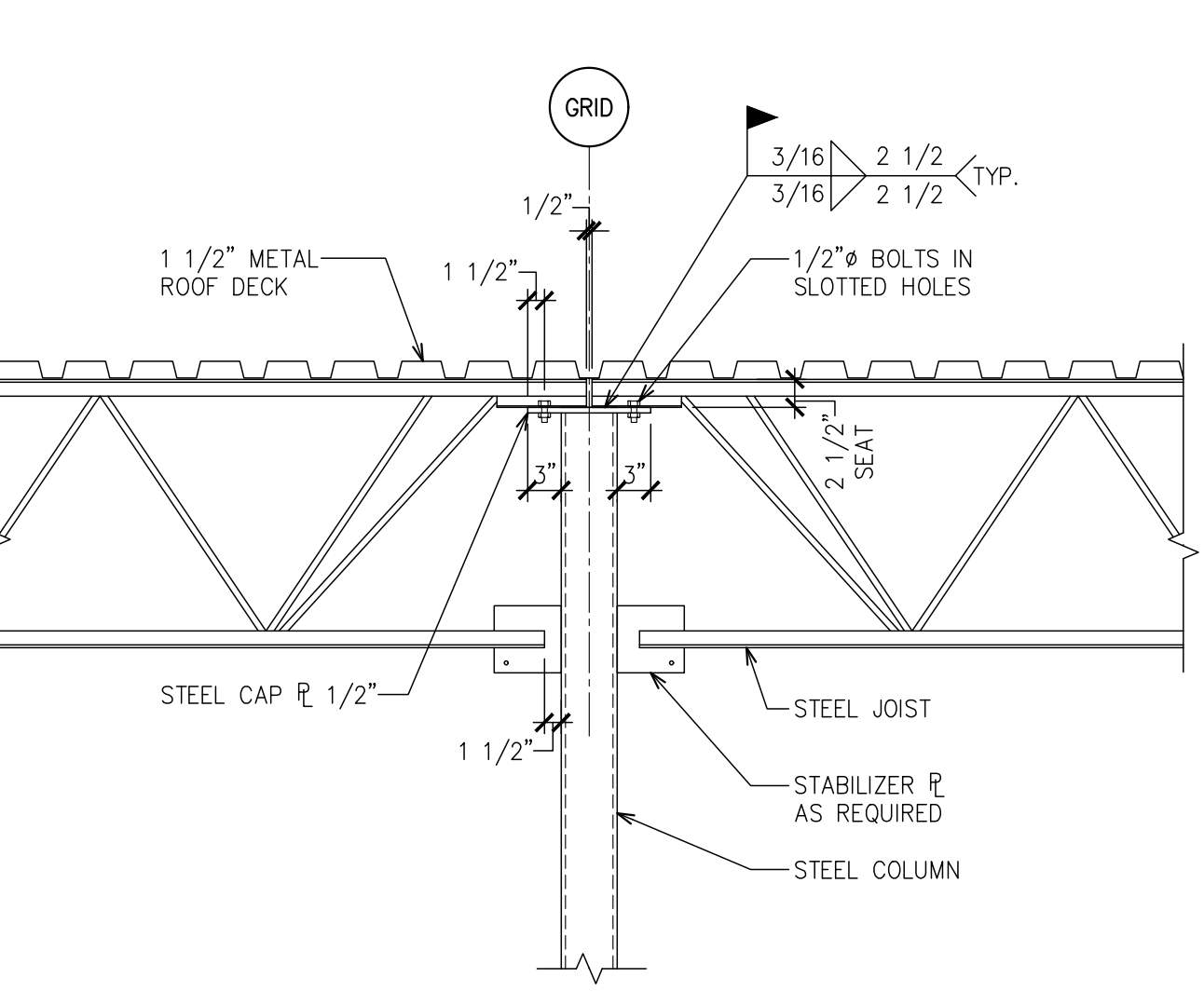
11 GIRDER BEARING AT COLUMN
SCALE: 3/4" = 1'-0"



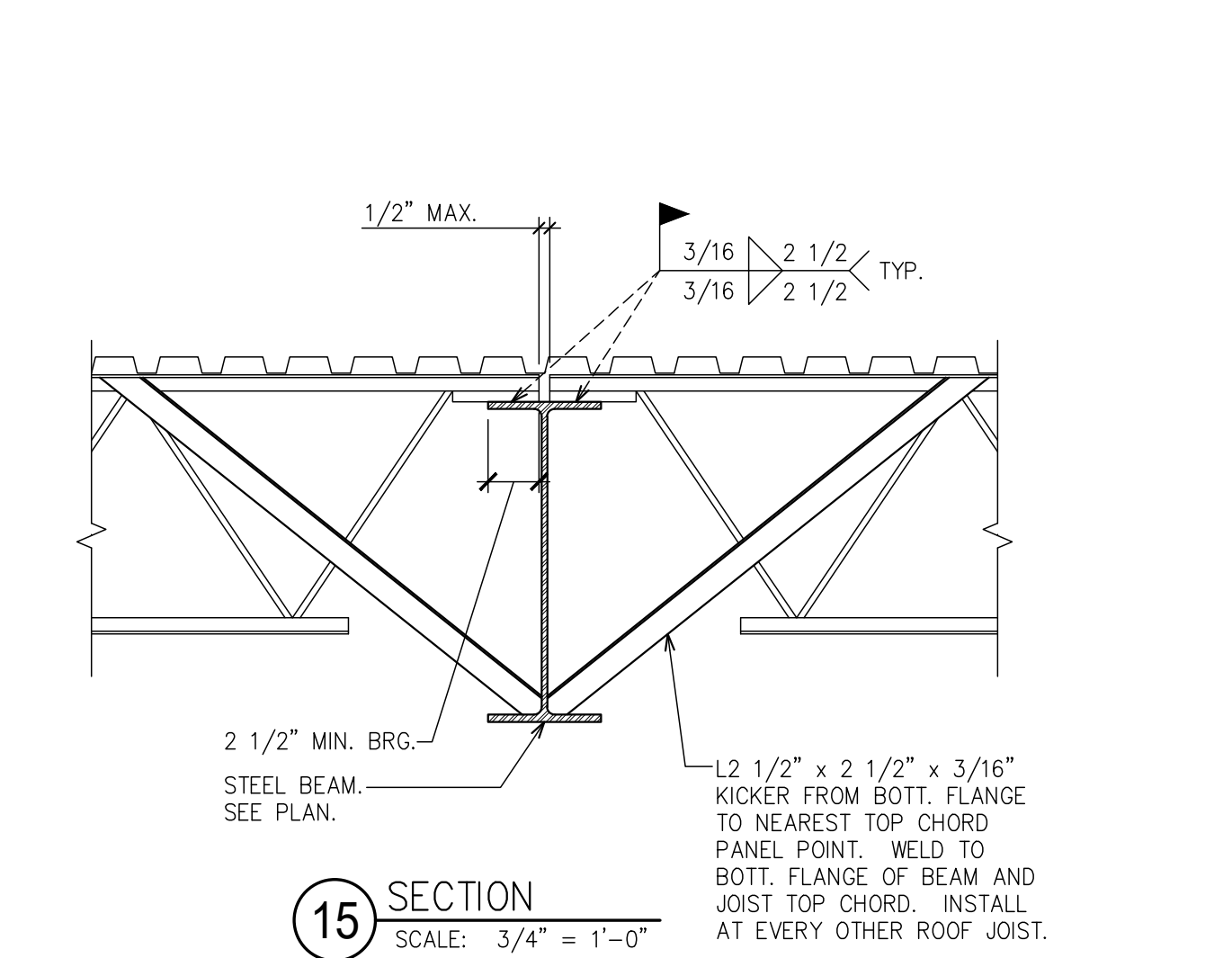
12 JOIST TO COLUMN
SCALE: 3/4" = 1'-0"



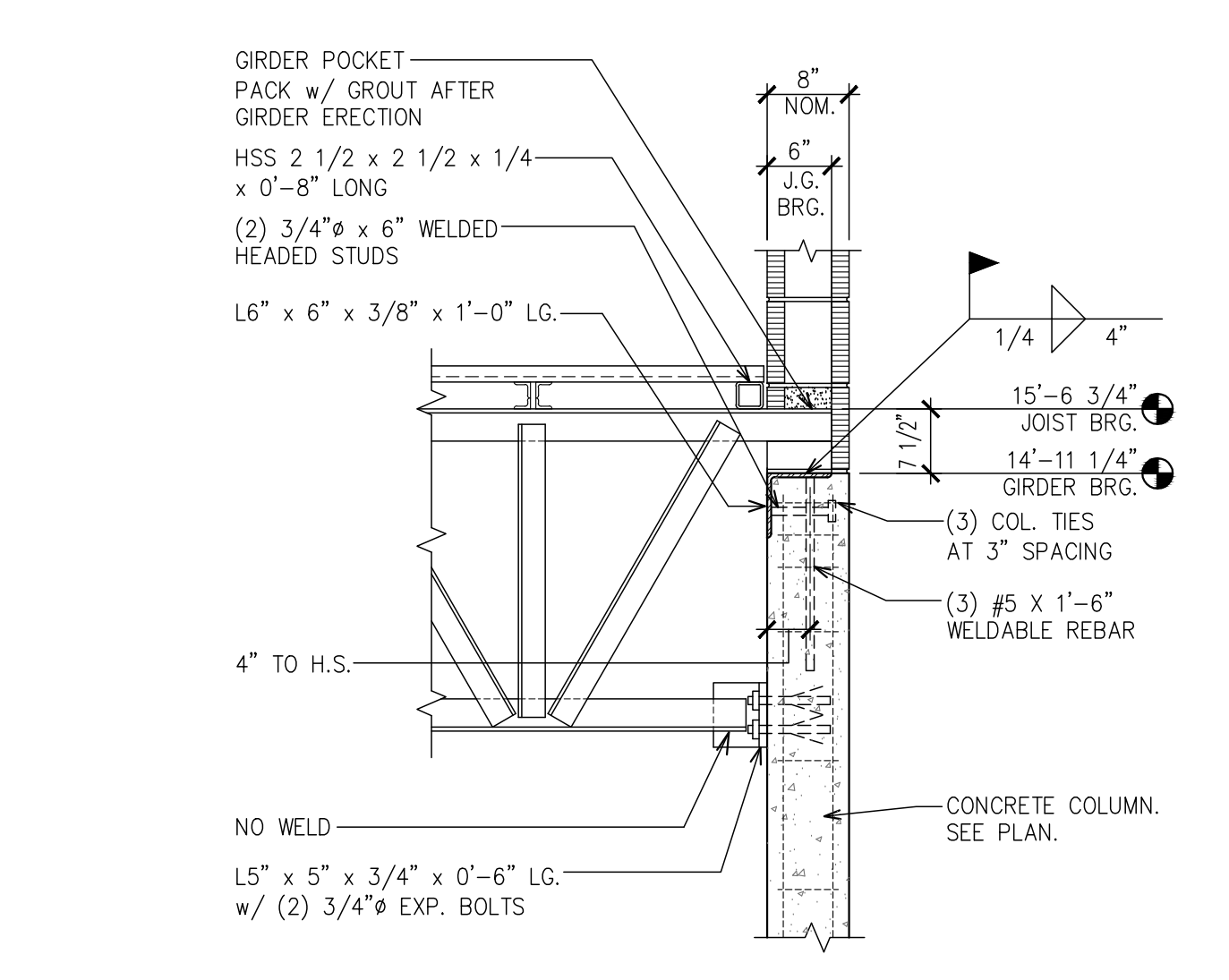
13 JOIST TO GIRDER
SCALE: 3/4" = 1'-0"



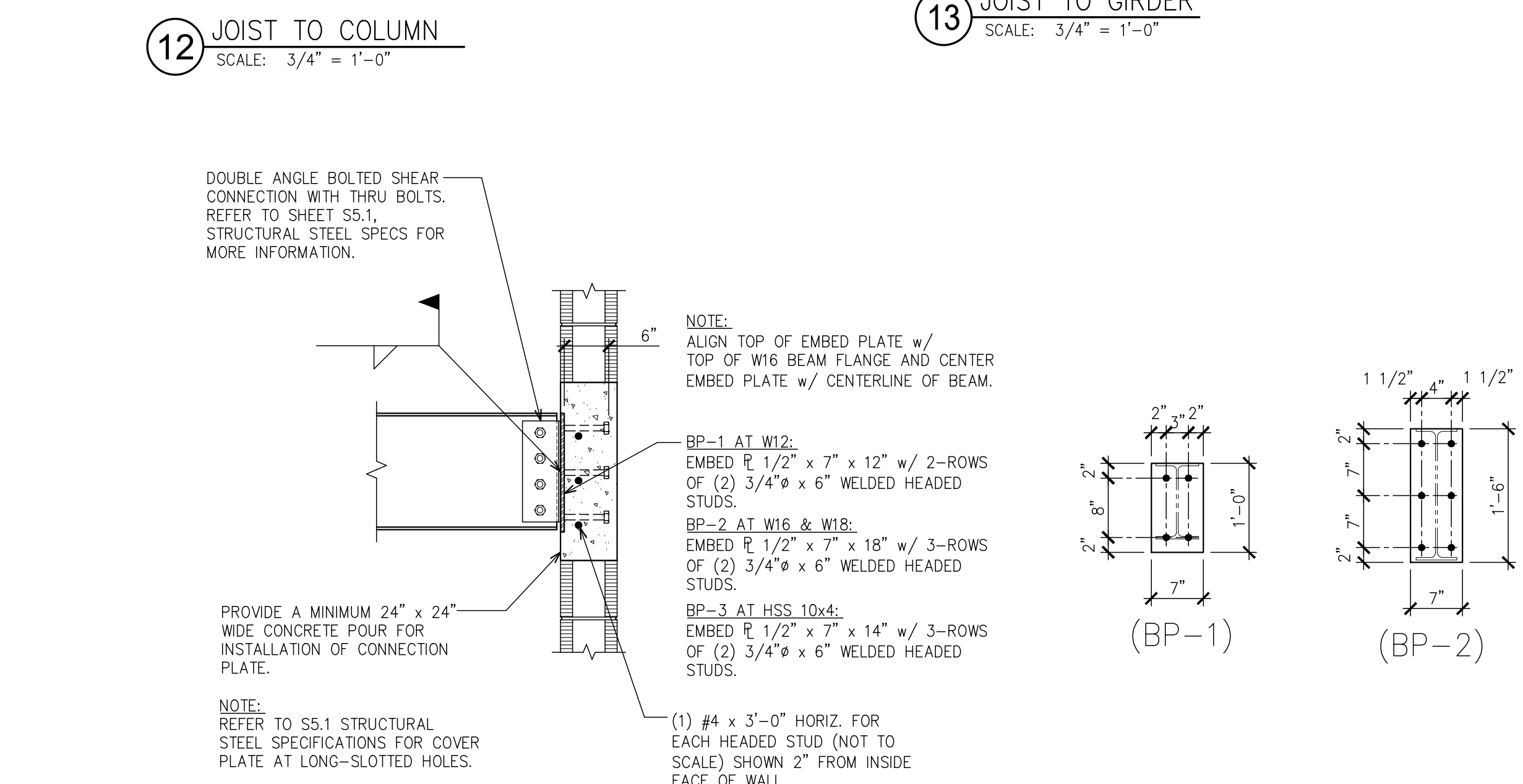
14 JOIST TO COLUMN
SCALE: 3/4" = 1'-0"



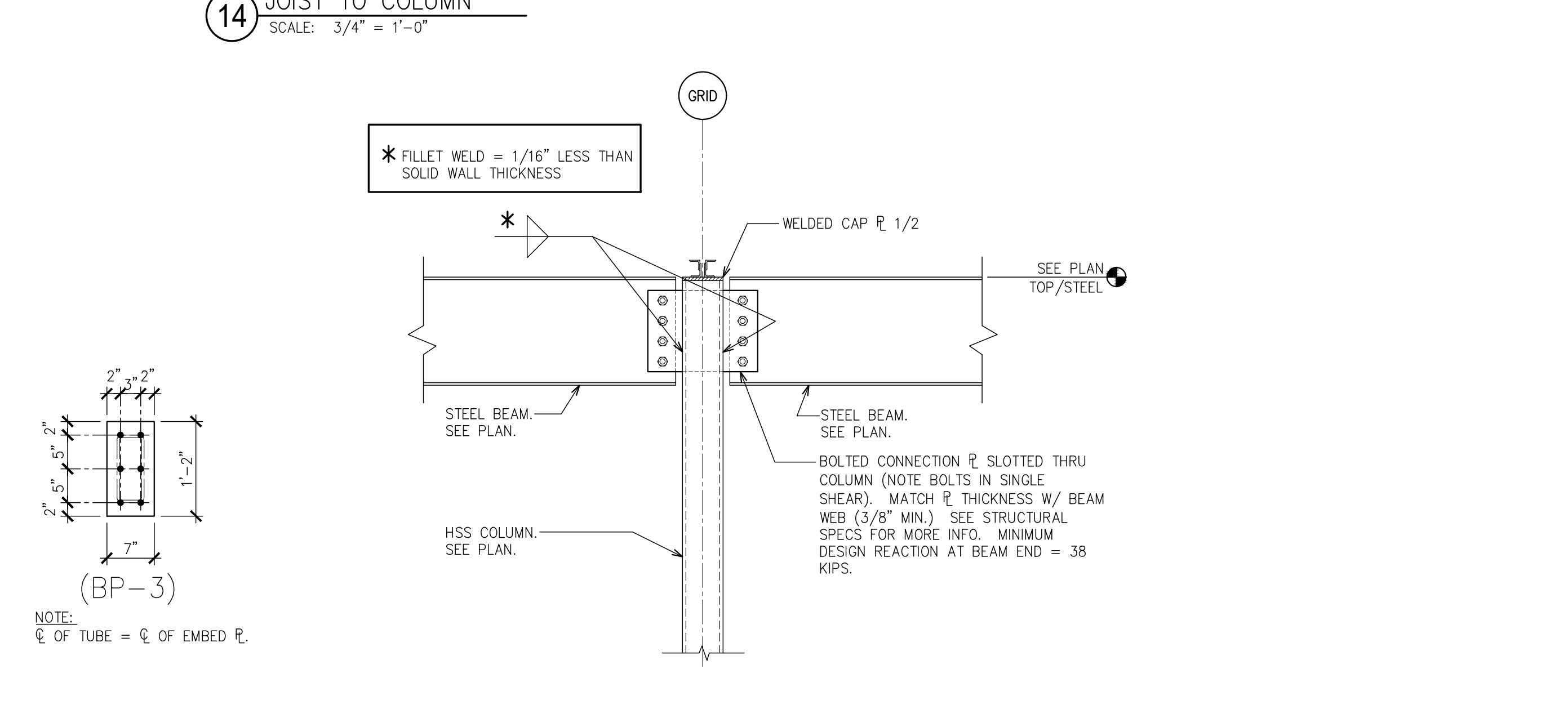
15 SECTION
SCALE: 3/4" = 1'-0"



16 GIRDER TO CONCRETE COLUMN
SCALE: 3/4" = 1'-0"



17 BEAM CONNECTION TO CONCRETE
SCALE: 3/4" = 1'-0"



18 BEAM-COLUMN CONNECTION
SCALE: 3/4" = 1'-0"

api+
2709 Rocky Point Dr. 201 T 813 + 281 9299
Tampa, Florida 33607 USA F 813 + 281 9292
License No AAC001935 **apiplus.com**

BULLETIN LOG



WESTLAKE VISITOR CENTER
CITY OF WESTLAKE
PALM BEACH COUNTY, FLORIDA

ISSUE DATE: -- 09-30-16
ISSUED FOR: PERMIT BUILDING SHELL ONLY

REVISION LOG

EAG
PROFESSIONAL ENGINEERING, INC. #1
16912 Mellissia Ann Dr. Lutz, FL 33558
PH: 813.963.1916 FAX: 813.889.6566
Alan C. Guenther, P.E. #53308/C.A. #26813

ALAN C. GUENTHER, PE #53308

TO THE BEST OF THE KNOWLEDGE OF THE ARCHITECTS AND ENGINEERS, THESE PLANS AND SPECIFICATIONS COMPLY WITH THE APPLICABLE MINIMUM BUILDING CODES AND THE APPLICABLE MINIMUM FIRE SAFETY STANDARDS.

WESTLAKE VISITOR CENTER
PROJECT NAME

SECTIONS AND DETAILS

SHEET NAME

PROJECT NUMBER: 2016.037
DRAWN BY: MAK CHECKED BY: ACC
SCALE: SEE SHEET

S4.2
SHEET NUMBER