

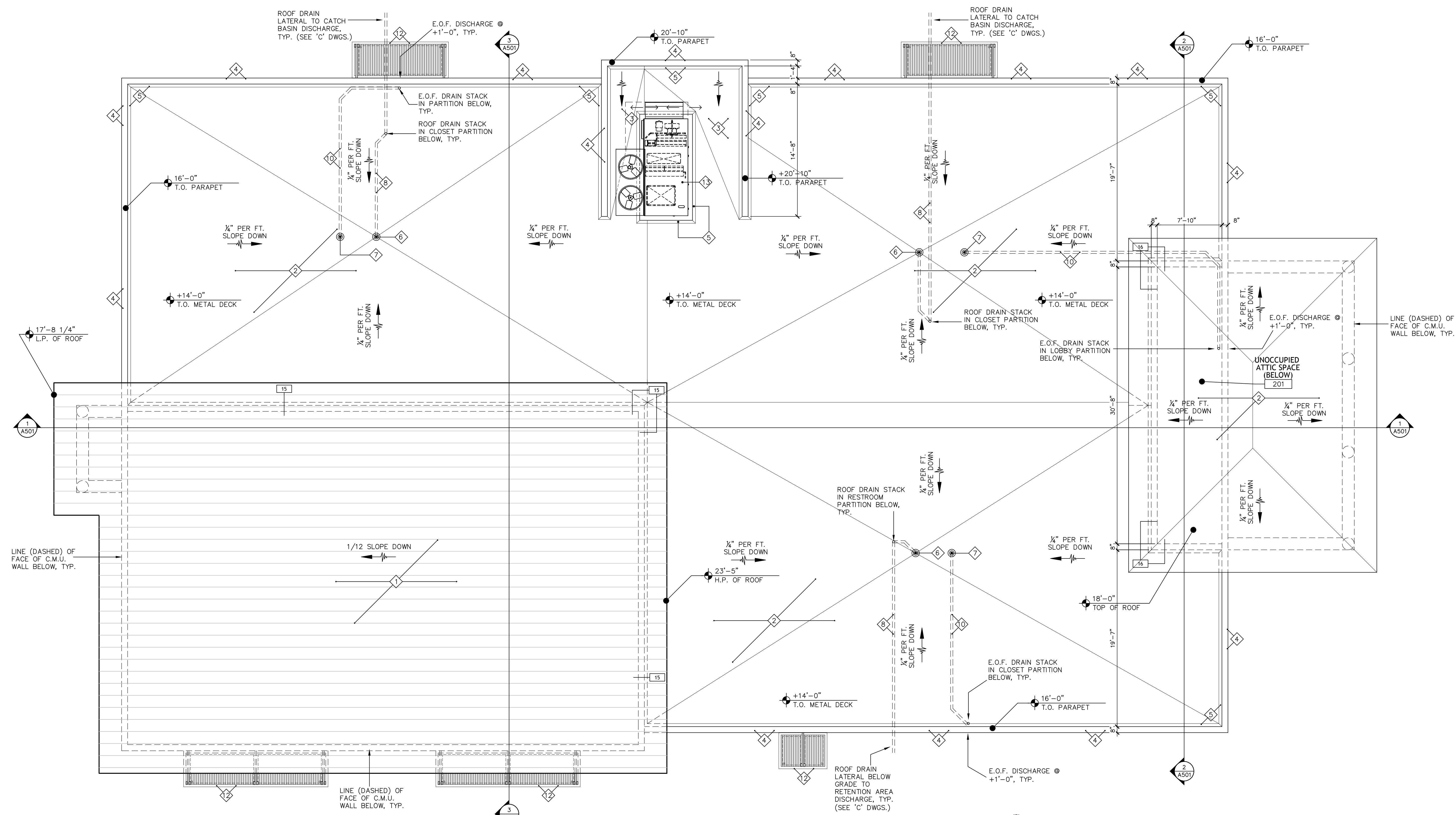
REVISIONS	BY

Slattery & Associates
ARCHITECTS PLANNERS
 2060 NW BOCA RATON BLVD.
 SUITE 2
 BOCA RATON, FL 33431
 TEL: 561-392-3848
 FAX: 561-392-5402
 WWW.SLATTERYARCHITECTS.COM

ACTIVITY CENTER FOR FLORENCE FULLER CHILD DEVELOPMENT CENTERS WEST CAMPUS
 S.W. 185TH STREET
 BOCA RATON, PALM BEACH COUNTY, FLORIDA

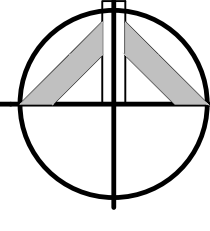
BIDDING NOT FOR CONSTRUCTION
 SEAL DATE: X-XX
 SLATTERY & ASSOCIATES
 FLORIDA REGISTRATION # AA000381

ROOF PLAN
 DRAWN: CR, DR, AB
 CHECKED: KB
 DATE: 10-21-16
 SCALE: AS NOTED
 JOB NO.: 2011-64
 SHEET: **A203**



ROOF PLAN

SCALE: 3/16" = 1'-0"



ROOF PLAN LEGEND			
1	STANDING-SEAM METAL ROOF SYSTEM (COLOR TO BE SELECTED BY ARCHITECT) SCREW & CLIP FASTENED OVER 30 LB. BITUMINOUS FELT UNDERLAMENT 1/4" THK NAIL TO 3/4" FIRE-RETARDANT PLYWOOD SHEATHING SCREW FASTENED PER O.A. & MFR. PUBLISHED INSTRUCTIONS TO G-90 GALV. MTL. STRUCTURAL DECK ATTACHED TO PRE-FAB. STL. JOISTS / BUILDING STRUCTURE, TYP. (SEE 'S' DWGS.)	6	4" ROOF DRAIN ROUTED THRU JOIST SPACE, PARTITION CHASE, THRU-WALL SLABS TO STORM SEWER TIE-IN, AND EMERGENCY OVER FLOW TO DISCHARGED W/ GRATE ABOVE GRADE, TYP.
2	3-PLY MODIFIED BITUMINOUS ROOFING SYST. OF GRANULAR IMPREGNATED CAP SHEET HOT-MOPPED OVER MODIFIED BITUMEN INTER-PLY MEMBRANE HOT-MOPPED OVER 80 LB. AVAILABLE BASE SHEET MECHANICALLY FASTENED TO MIN. 2" THK. 36 PCF. LT. WT. INSULATING CONC. POURED OVER & KEYED INTO MIN. 1 1/2" THK LAYERED POLYSTYRENE BOARD INSULATION W/ KEYING HOLES & TAPERED UP @ 1/2" PER FT. W/ BOTTOM LAYER SET IN WET SLURRY COAT OF 36 PCF. LT. WT. INSULATING CONC. FILLING JUST ABOVE DECK FLUTES ALL PER O.A. & MFR'S. PUBLISHED INSTRUCTIONS OVER SLOTTED G-90 GALV. MTL. STRUCTURAL DECK ATT. TO STL. JOISTS / BUILDING STRUCTURE, TYP. (SEE 'S' DWGS.)	7	4" EMERGENCY OVERFLOW ROOF DRAIN ROUTED THRU JOIST SPACE, PARTITION CHASE, THRU-WALL SLABS TO STORM SEWER TIE-IN, AND EMERGENCY OVER FLOW TO DISCHARGED W/ GRATE ABOVE GRADE, TYP.
3	CRICKET AS PART OF ROOF SYST., TYP.	8	PROPOSED ROUTING OF ROOF DRAIN LEADER THROUGH JOIST SPACE, PARTITION CHASE & SLAB TO STORM SEWER TIE-IN, (SEE 'P' & 'C' DWGS.), TYP.
4	BACK-SLOPED ALUM. CAP FLASHING AS PART OF ROOF SYST., TYP.	9	PROPOSED ROUTING OF ROOF DRAIN LEADER THROUGH JOIST SPACE, C.M.U. COLUMN CHASE & FOOTING TO STORM SEWER TIE-IN, (SEE 'P' & 'C' DWGS.), TYP.
5	4" CANT STRIP OR CRICKET AS PART OF ROOF SYST., TYP.	10	PROPOSED ROUTING OF E.O.F. DRAIN LEADER THROUGH JOIST SPACE, PARTITION CHASE & EXTERIOR WALL 1' BEYOND FINISH & W/ MTL. GRATE COVER @ 1'-0" ABOVE GRADE, (SEE 'P' DWGS.), TYP.
		11	PROPOSED ROUTING OF E.O.F. DRAIN LEADER DOWN THROUGH JOIST SPACE & STUCCO CEILING 1' BEYOND FINISH & W/ MTL. GRATE COVER, (SEE 'P' DWGS.), TYP.
		12	PRE-FAB. ALUMINUM CANOPY SYST. W/ DIAGONAL STRUTS ATTACHED TO BUILDING STRUCTURE PER SPECIALTY ENGINEER'S DESIGN, TYP.
		13	ROOF TOP H.V.A.C. UNIT ON SKID W/ HOLD DOWN ANCHORS ATT. TO WEATHER-TIGHT INSULATED STEEL CURB WELDED TO DECK.

ROOF PLAN NOTES
1. PROVIDE LIGHTNING PROTECTION SYSTEM W/ DESIGN BY CERTIFIED CONTRACTOR. PROVIDE SHOP DRAWINGS TO ARCHITECT FOR REVIEW. GC TO COORDINATE CONCEALED CABLE ROUTING & SLEEVING AS NEEDED & COORDINATE WITH OTHER TRADES.
2. G.C. PLUMBING & SITE / STORM SEWER CONTRACTORS TO FIELD COORDINATE ROUTING CONNECTION OF COMPLETE STORM DRAIN SYSTEM TO EXISTING STORM SEWER TIE-IN & ALSO EMERGENCY OVERFLOW (E.O.F.) DRAIN SYSTEM ROUTING TO VISIBLE ABOVE GRADE DISCHARGES, TYP.