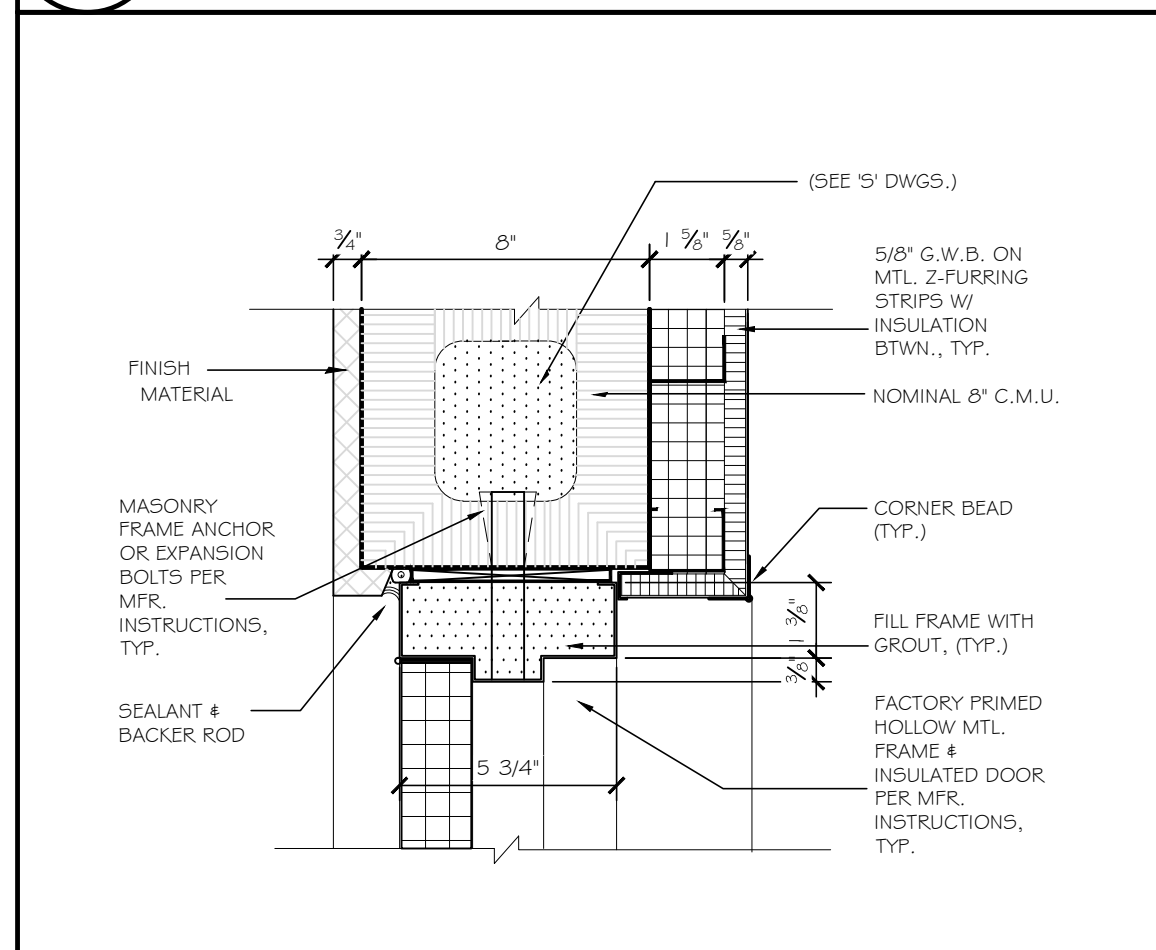
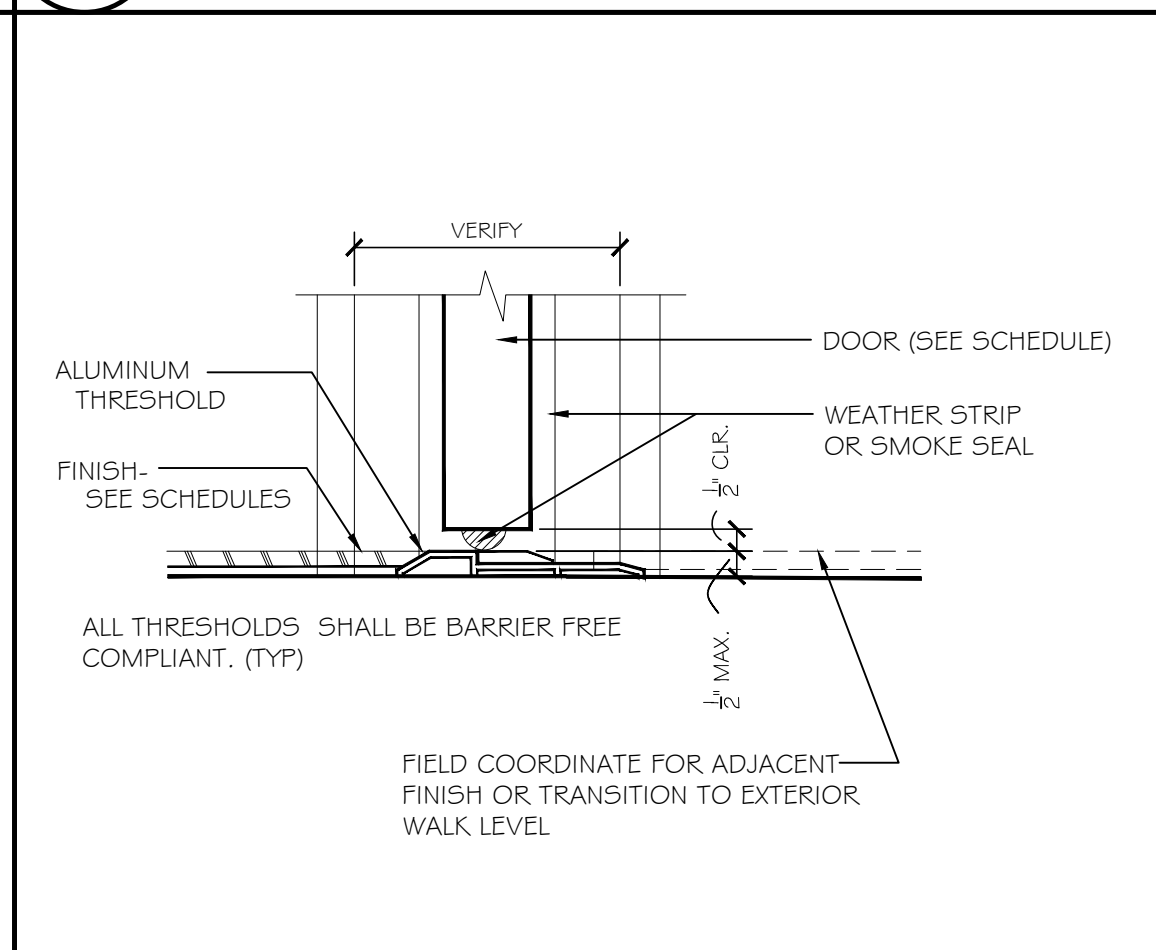


1 HEAD
A901 SCALE: 3"=1'-0"

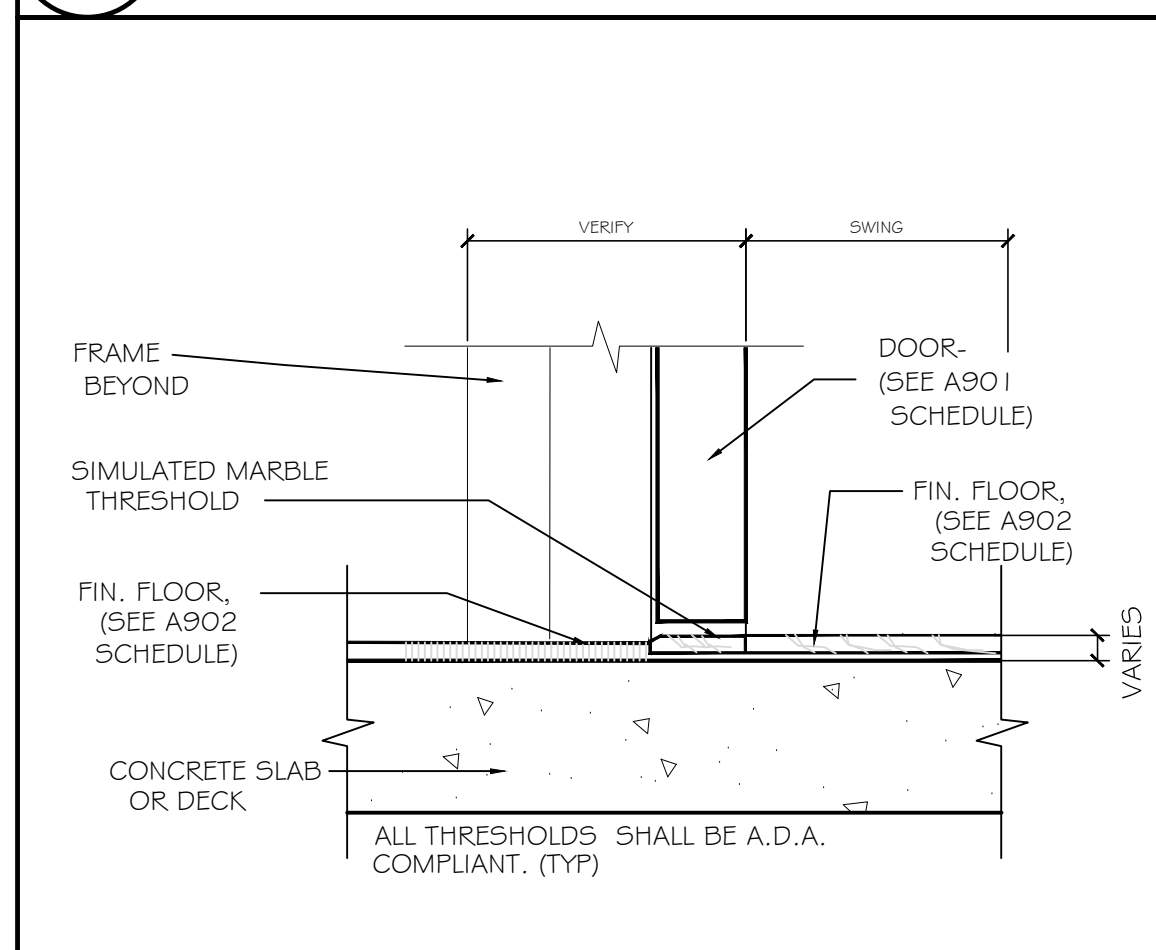
2 DOOR JAMB/HEAD (SIM.)
A901 SCALE: 3"=1'-0"



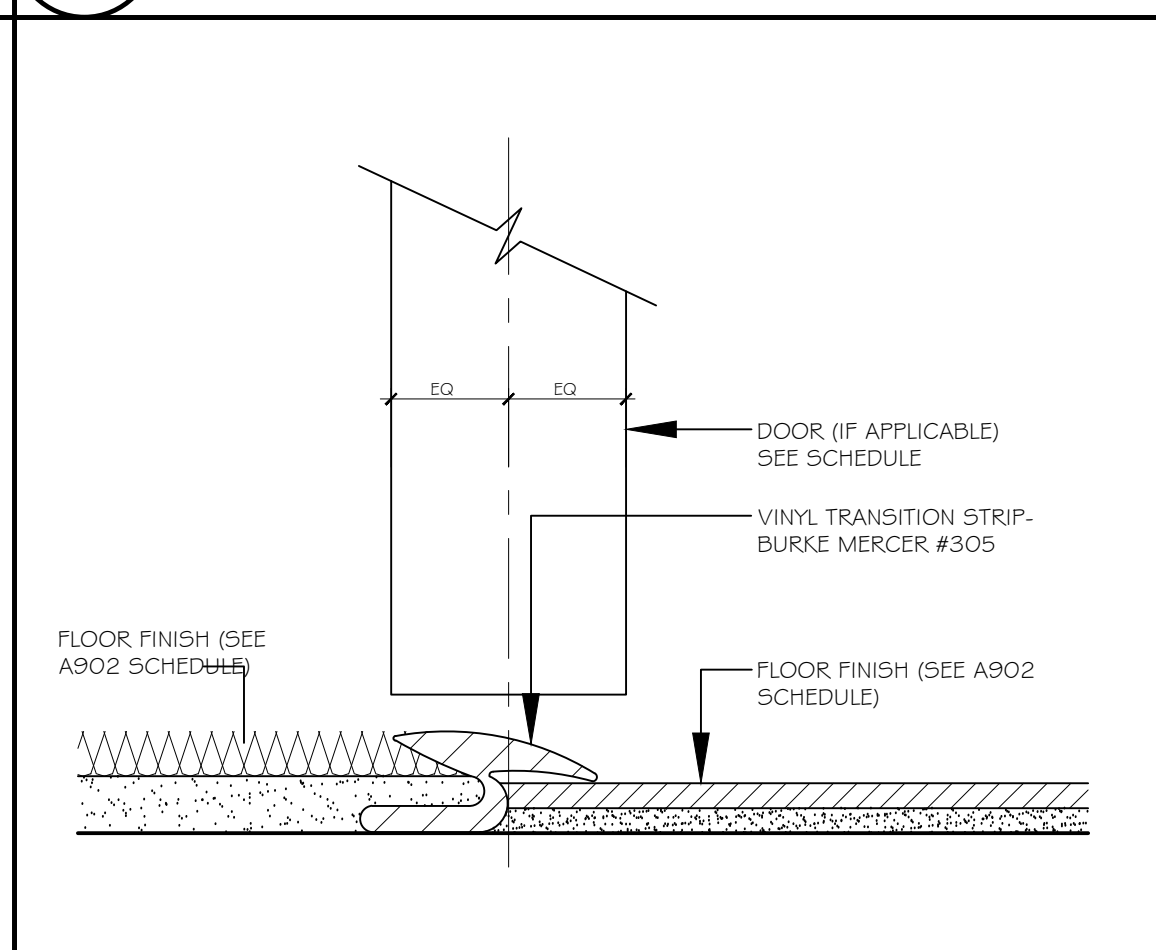
3 JAMB/HEAD (SIM)
A901 SCALE: NOT TO SCALE



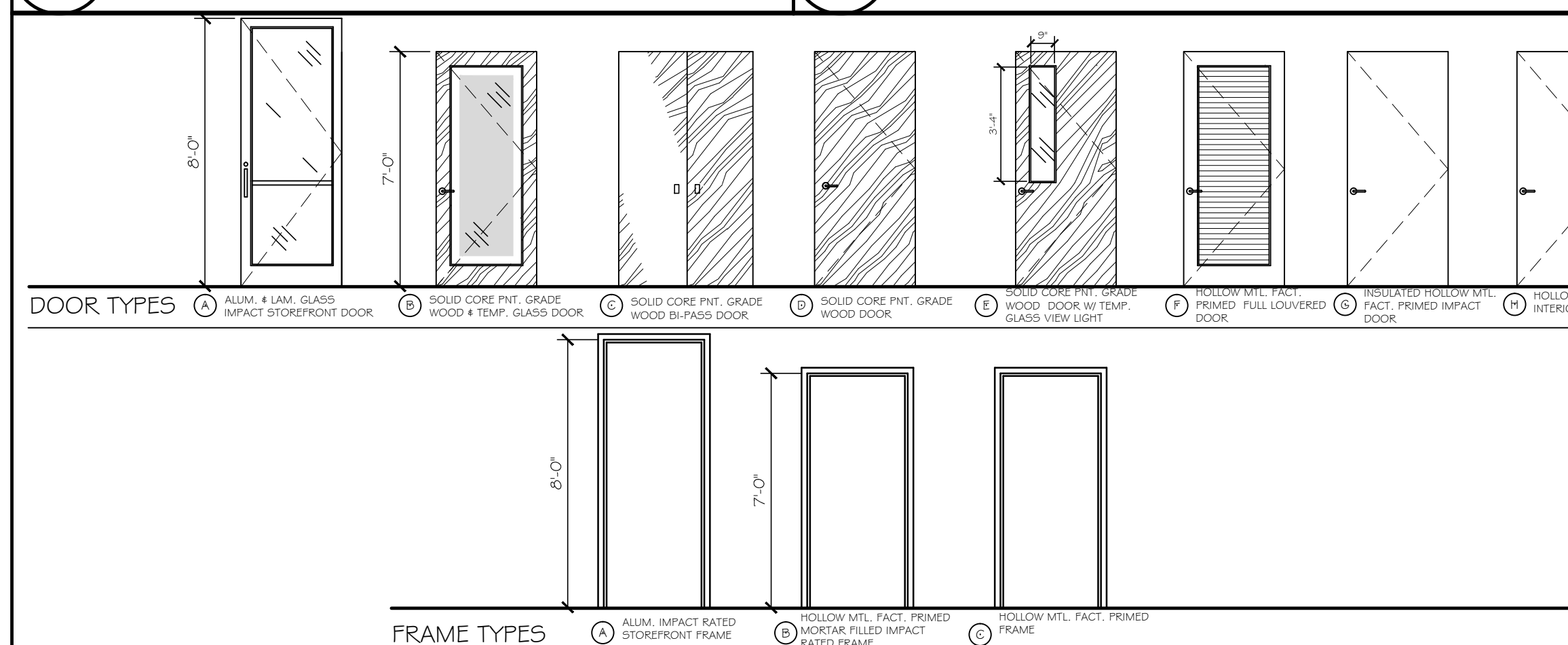
4 THRESHOLD
A901 SCALE: NOT TO SCALE



5 THRESHOLD
A901 SCALE: NOT TO SCALE



6 VCT/CARPET TRANSITION
A901 SCALE: NOT TO SCALE



7 DOOR & FRAME TYPES
A901 SCALE: NOT TO SCALE

8 DOOR & FRAME TYPES
A901 SCALE: NOT TO SCALE

DOOR SCHEDULE

| MARK | DOOR | | SIZE | | | FRAME | | DETAILS | | | LABEL | REMARKS | DOOR COLOR | HDMR SET |
|------|-------------|------|-----------|--------|-----------|-------------|------|---------|--------|-----------|-------|---|------------|----------|
| | MATERIAL | TYPE | WIDTH | HEIGHT | THICKNESS | MATERIAL | TYPE | HEAD | JAMB | THRESHOLD | | | | |
| 101 | ALUM-LGL5 | A | (2) 3'-0" | 8'-0" | 1-3/4" | ALUM | A | 1/A901 | 1/A901 | 4/A901 | N/A | IMPACT RATED SYSTEM W/ N.O.A. OR PRODUCT APPROVAL, TYP. | | 1 |
| 102 | PGSCW-T-GL5 | B | 3'-0" | 7'-0" | 1-3/4" | H-MTL | C | 2/A901 | 2/A901 | 5/A901 | N/A | | | 2 |
| 102A | PGSCW | C | (2) 2'-0" | 7'-0" | 1-3/4" | FACT. TRACK | N/A | - | - | - | N/A | | | N/A |
| 104 | PGSCW | D | 3'-0" | 7'-0" | 1-3/4" | H-MTL | C | 2/A901 | 2/A901 | N/A | N/A | | | 3 |
| 105 | PGSCW | D | 3'-0" | 7'-0" | 1-3/4" | H-MTL | C | 2/A901 | 2/A901 | N/A | N/A | | | 3 |
| 106 | PGSCW | D | 2'-6" | 7'-0" | 1-3/4" | H-MTL | C | 2/A901 | 2/A901 | N/A | N/A | | | 6 |
| 107 | PGSCW | D | 3'-0" | 7'-0" | 1-3/4" | H-MTL | C | 2/A901 | 2/A901 | N/A | N/A | | | 3 |
| 108 | PGSCW | D | 3'-0" | 7'-0" | 1-3/4" | H-MTL | C | 2/A901 | 2/A901 | 5/A901 | N/A | | | 12 |
| 109 | PGSCW | D | (2) 3'-0" | 7'-0" | 1-3/4" | H-MTL | C | 2/A901 | 2/A901 | N/A | N/A | | | 4 |
| 110 | PGSCW | D | 3'-0" | 7'-0" | 1-3/4" | H-MTL | C | 2/A901 | 2/A901 | N/A | N/A | | | 5 |
| 111 | PGSCW | D | 2'-6" | 7'-0" | 1-3/4" | H-MTL | C | 2/A901 | 2/A901 | N/A | N/A | | | 6 |
| 112 | PGSCW | D | 3'-0" | 7'-0" | 1-3/4" | H-MTL | C | 2/A901 | 2/A901 | N/A | N/A | | | 5 |
| 113A | PGSCW-T-GL5 | E | 3'-0" | 7'-0" | 1-3/4" | H-MTL | C | 2/A901 | 2/A901 | N/A | N/A | | | 7 |
| 113B | ALUM-LGL5 | A | 3'-0" | 8'-0" | 1-3/4" | ALUM | A | 1/A901 | 1/A901 | 4/A901 | N/A | IMPACT RATED SYSTEM W/ N.O.A. OR PRODUCT APPROVAL, TYP. | | 8 |
| 114 | PGSCW | D | (2) 2'-6" | 7'-0" | 1-3/4" | H-MTL | C | 2/A901 | 2/A901 | N/A | N/A | | | 9 |
| 116A | PGSCW-T-GL5 | E | 3'-0" | 7'-0" | 1-3/4" | H-MTL | C | 2/A901 | 2/A901 | N/A | N/A | | | 7 |
| 116B | ALUM-LGL5 | A | 3'-0" | 8'-0" | 1-3/4" | ALUM | C | 1/A901 | 1/A901 | 4/A901 | N/A | IMPACT RATED SYSTEM W/ N.O.A. OR PRODUCT APPROVAL, TYP. | | 8 |
| 117 | PGSCW | D | (2) 2'-6" | 7'-0" | 1-3/4" | H-MTL | C | 2/A901 | 2/A901 | N/A | N/A | | | 9 |
| 118 | PGSCW | D | (2) 3'-0" | 7'-0" | 1-3/4" | H-MTL | C | 2/A901 | 2/A901 | N/A | N/A | | | 4 |
| 120A | PGSCW-T-GL5 | E | 3'-0" | 7'-0" | 1-3/4" | H-MTL | C | 2/A901 | 2/A901 | N/A | N/A | | | 7 |
| 120B | ALUM-LGL5 | A | 3'-0" | 8'-0" | 1-3/4" | ALUM | A | 1/A901 | 1/A901 | 4/A901 | N/A | IMPACT RATED SYSTEM W/ N.O.A. OR PRODUCT APPROVAL, TYP. | | 8 |
| 121 | PGSCW | D | (2) 2'-6" | 7'-0" | 1-3/4" | H-MTL | C | 2/A901 | 2/A901 | N/A | N/A | | | 9 |
| 122 | PGSCW | D | 3'-0" | 7'-0" | 1-3/4" | H-MTL | C | 2/A901 | 2/A901 | N/A | N/A | | | 6 |
| 123A | PGSCW | D | (2) 3'-0" | 7'-0" | 1-3/4" | H-MTL | C | 2/A901 | 2/A901 | N/A | N/A | | | 10 |
| 123B | ALUM-LGL5 | A | 3'-0" | 8'-0" | 1-3/4" | ALUM | A | 1/A901 | 1/A901 | 4/A901 | N/A | IMPACT RATED SYSTEM W/ N.O.A. OR PRODUCT APPROVAL, TYP. | | 8 |
| 125A | PGSCW-T-GL5 | E | 3'-0" | 7'-0" | 1-3/4" | H-MTL | C | 2/A901 | 2/A901 | N/A | N/A | | | 7 |
| 125B | ALUM-LGL5 | A | 3'-0" | 8'-0" | 1-3/4" | ALUM | A | 1/A901 | 1/A901 | 4/A901 | N/A | IMPACT RATED SYSTEM W/ N.O.A. OR PRODUCT APPROVAL, TYP. | | 8 |
| 125C | ALUM-LGL5 | A | (2) 3'-0" | 8'-0" | 1-3/4" | ALUM | A | 1/A901 | 1/A901 | 4/A901 | N/A | IMPACT RATED SYSTEM W/ N.O.A. OR PRODUCT APPROVAL, TYP. | | 1 |
| 126 | PGSCW | D | (2) 2'-6" | 7'-0" | 1-3/4" | H-MTL | C | 2/A901 | 2/A901 | N/A | N/A | | | 9 |
| 127A | PGSCW-T-GL5 | E | 3'-0" | 7'-0" | 1-3/4" | H-MTL | C | 2/A901 | 2/A901 | N/A | N/A | | | 7 |
| 127B | ALUM-LGL5 | A | 3'-0" | 8'-0" | 1-3/4" | ALUM | A | 1/A901 | 1/A901 | 4/A901 | N/A | IMPACT RATED SYSTEM W/ N.O.A. OR PRODUCT APPROVAL, TYP. | | 8 |
| 128 | PGSCW | D | (2) 2'-6" | 7'-0" | 1-3/4" | H-MTL | C | 2/A901 | 2/A901 | N/A | N/A | | | 9 |
| 129A | PGSCW-T-GL5 | E | 3'-0" | 7'-0" | 1-3/4" | H-MTL | C | 2/A901 | 2/A901 | N/A | N/A | | | 7 |
| 129B | ALUM-LGL5 | A | 3'-0" | 8'-0" | 1-3/4" | ALUM | A | 1/A901 | 1/A901 | 4/A901 | N/A | IMPACT RATED SYSTEM W/ N.O.A. OR PRODUCT APPROVAL, TYP. | | 8 |
| 130 | PGSCW | D | (2) 2'-6" | 7'-0" | 1-3/4" | H-MTL | C | 2/A901 | 2/A901 | N/A | N/A | | | 9 |
| 131 | PGSCW | D | (2) 2'-6" | 7'-0" | 1-3/4" | H-MTL | C | 2/A901 | 2/A901 | N/A | N/A | | | 9 |
| 133 | FPHMI | G | 3'-0" | 7'-0" | 1-3/4" | H-MTL | C | 3/A901 | 3/A901 | 4/A901 | N/A | IMPACT RATED SYSTEM W/ N.O.A. OR PRODUCT APPROVAL, TYP. | | 11 |
| 134 | FPHMI | G | 2'-6" | 7'-0" | 1-3/4" | H-MTL | C | 3/A901 | 3/A901 | 4/A901 | N/A | IMPACT RATED SYSTEM W/ N.O.A. OR PRODUCT APPROVAL, TYP. | | 11 |

SCHEDULE ABBREVIATIONS

- ALUM STOREFRONT ALUMINUM W/ FACT. POWDER COAT PAINT
- PGSCW PAINT GRADE SOLID CORE WOOD
- FPHM FACTORY PRIMED HOLLOW METAL
- FPHMI FACTORY PRIMED HOLLOW METAL INSULATED
- L-GL5 LAMINATED GLASS
- T-GL5 TEMPERED GLASS
- FACT FACTORY OR VENDOR-SHOP PROVIDED
- H-MTL FACTORY PRIMED WELDED HOLLOW METAL / STEEL FRAME
- N/A NOT APPLICABLE

DOOR HARDWARE SETS

| HARDWARE SET # 1 (DOUBLE STOREFRONT ENTRY) | HARDWARE SET # 2 (OFFICE SUITE ENTRY) | HARDWARE SET # 3 (TYP. OFFICE) |
|---|---|--|
| 6-HINGES: IVES 5BB1, 4.5" X 4.5", NRP 1-BATTERY KEYPAD: SCHL KING COBRA 1-RIM CYLINDER: SCHL INTEGRAL W/ KING COBRA 1-CORE: SCHL EVEREST, INTERCHANGEABLE 2-CLOSERS: LCN 4040, SURFACE-MOUNT 2-EXIT DEVICES: VON DUPRIN 35A, CONCEALED VERT. ROD 2-EXTERIOR PULLS: IVES 8103 1-SET-WEATHERSTRIPS: ZERO 2-SWEEP / DOOR BOTTOMS: PER DOOR MFR. # N.O.A. | 3-HINGES: IVES 5BB1, 4.5" X 4.5", NRP 1-BATTERY KEYPAD: SCHL KING COBRA 1-LOCKSET: SCHL INTEGRAL W/ KING COBRA, ATHENS LEVER 1-CORE: SCHL EVEREST, INTERCHANGEABLE 1-CLOSER: LCN 4040, SURFACE-MOUNT 1-SET-SMOKE SEALS: ZERO 1-INTERIOR KICK PLATE: IVES 8400, 34" X 8" 1-SET-SWEEP / DOOR BOTTOMS: PER DOOR MFR. # N.O.A. | 3-HINGES: IVES 5BB1, 4.5" X 4.5", NRP 1-LOCKSET: SCHL ND, STORAGE, ATHENS LEVER 1-CORE: SCHL EVEREST, INTERCHANGEABLE 3-SILENCERS: IVES 5RG4 1-FLOOR STOP: IVES FS43G |
| HARDWARE SET # 4 (DOUBLE HALLWAY) | HARDWARE SET # 5 (TYP. INTERIOR RESTROOMS) | HARDWARE SET # 6 (OFFICE CLOSET, JANITOR & NUTRITION PREP.) |
| 6-HINGES: IVES 5BB1, 4.5" X 4.5", NRP 2-EXIT DEVICES: VON DUPRIN 35A, SURFACE VERT. ROD 2-CLOSERS: LCN 4040, SURFACE-MOUNT 4-SILENCERS: IVES 5RG4 | 3-HINGES: IVES 5BB1, 4.5" X 4.5", NRP 1-EXTERIOR PULL: IVES 8303, 6" X 12" 1-PUSH PLATE: IVES 8200, 6" X 12" 1-CLOSER: LCN 4040, SURFACE-MOUNT 1-INTERIOR KICK PLATE: IVES 8400, 34" X 8" 1-SET-SMOKE SEALS: ZERO 1-SWEEP / DOOR BOTTOMS: PER DOOR MFR. | 3-HINGES: IVES 5BB1, 4.5" X 4.5", NRP 1-LOCKSET: SCHL ND, STORAGE, ATHENS LEVER 1-CORE: SCHL EVEREST, INTERCHANGEABLE 1-CLOSER: LCN 4040, SURFACE-MOUNT (NUTRITION PREP. ONLY) 1-INTERIOR KICK PLATE: IVES 8400, 34" X 8" 3-SILENCERS: IVES 5RG4 1-SET-SMOKE SEALS: ZERO, (NUTRITION PREP. ONLY) 2-SWEEP / DOOR BOTTOMS: PER DOOR MFR. (NUTRITION PREP. ONLY) |
| HARDWARE SET # 7 (TYP. MULTI-PURPOSE ENTRY) | HARDWARE SET # 8 (TYP. MULTI-PURPOSE EXTERIOR EXIT) | HARDWARE SET # 9 (DOUBLE CLOSET) |
| 3-HINGES: IVES 5BB1, 4.5" X 4.5", NRP 1-LOCKSET: SCHL ND, CLASSROOM SECURITY, ATHENS LEVER 1-CORE: SCHL EVEREST, INTERCHANGEABLE 1-CLOSER: LCN 4040, SURFACE-MOUNT 1-SET-SMOKE SEALS: ZERO 1-SWEEP / DOOR BOTTOMS: PER DOOR MFR. | 4-HINGES: IVES 5BB1, 4.5" X 4.5", NRP 1-LOCKSET: SCHL ND, ENTRANCE / OFFICE, ATHENS LEVER 1-CORE: SCHL EVEREST, INTERCHANGEABLE 1-CLOSER: LCN 4040, SURFACE-MOUNT 1-SET-SMOKE SEALS: ZERO 1-SWEEP / DOOR BOTTOM: PER DOOR MFR. # N.O.A. 1-THRESHOLD: ALUM. 3G, ADA COMPLIANT | 6-HINGES: IVES 5BB1, 4.5" X 4.5", NRP 1-LOCKSET: SCHL ND, STOREROOM, ATHENS LEVER 1-CORE: SCHL EVEREST, INTERCHANGEABLE 1-SET-MANUAL FLUSH-BOLT: IVES FB35B, W/ RECESSED RECEIVERS 4-SILENCERS: IVES 5RG4 |
| HARDWARE SET # 10 (DOUBLE MULTI-PURPOSE TO MULTI-PURPOSE) | HARDWARE SET # 11 (TYP. MECH.-ELECT. ROOM EXTERIOR ENTRY) | HARDWARE SET # 12 (STAFF RESTROOM) |
| 6-HINGES: IVES 5BB1, 4.5" X 4.5", NRP 1-LOCKSET: SCHL ND, CLASSROOM SECURITY, ATHENS LEVER 1-CORE: SCHL EVEREST, INTERCHANGEABLE 1-SET-MANUAL FLUSH-BOLTS: IVES FB35B (T. # B.), W/ RECEIVERS (T. # B.) 2-FLOOR STOPS: IVES FS43G 1-SET-SMOKE SEALS: ZERO | 6-HINGES: IVES 5BB1, 4.5" X 4.5", NRP 1-LOCKSET: SCHL ND, STOREROOM, ATHENS LEVER 1-CLOSER: LCN 4040, SURFACE-MOUNT 1-SET-WEATHERSTRIPS: ZERO 1-SWEEP / DOOR BOTTOM: PER DOOR MFR. # N.O.A. 1-THRESHOLD: ALUM. 3G, ADA COMPLIANT | 3-HINGES: IVES 5BB1, 4.5" X 4.5", NRP 1-PRIVACY LOCK: SCHL ND, ATHENS LEVER 3-SILENCERS: IVES 5RG4 1-FLOOR STOP: IVES FS43G 1-TRANSITION STRIP: PER FLOOR FINISHES, ADA COMPLIANT |

DOOR & HARDWARE NOTES:

- PROVIDE FINISH HARDWARE AS SPECIFIED OR EQUAL FUNCTION, STYLE, FINISH AND QUALITY.
- KEYING TO BE PSB (FIRST QUALITY) WITH INTERCHANGEABLE CORES. GC TO COORDINATE KEYING WITH OWNER.
- GC TO PROVIDE COMPLETE HARDWARE SCHEDULES # PRODUCT DATA CUT SHEET SUBMITTAL FOR PRE-APPROVAL
- ALL FINISH HARDWARE TO BE SATIN CHROME #626 OR TO MATCH, TYP.
- PROVIDE HARDWARE AS INDICATED. THE HARDWARE MANUFACTURERS ARE INDICATED AS A BASIS OF DESIGN. SUBSTITUTES WHICH ARE TRUE EQUAL QUALITY # FUNCTION MAY BE SUBMITTED FOR OWNER # ARCHITECTS PRE-APPROVAL.
- HARDWARE SETS INCLUDING LOCKSETS, FLUSH-BOLTS, HINGES, ETC.) FOR EXTERIOR DOORS ARE TO BE IN COMPLIANCE WITH MANUFACTURERS N.O.A. OR PRODUCT APPROVAL SPECIFICATIONS, TYP.

| REVISIONS | BY |
|-----------|----|
| | |
| | |
| | |
| | |
| | |
| | |

Slattery & Associates
ARCHITECTS PLANNERS
 2060 NW BOCA RATON BLVD.
 SUITE 2
 BOCA RATON, FL 33431
 TEL: 561-392-3848
 FAX: 561-392-5402
 WWW.SLATTERYARCHITECTS.COM

ACTIVITY CENTER FOR FLORENCE FULLER CHILD DEVELOPMENT CENTERS WEST CAMPUS
 S.W. 185TH STREET
 BOCA RATON, PALM BEACH COUNTY, FLORIDA

BIDDING NOT FOR CONSTRUCTION
 SEAL DATE: X-X-X

| | |
|---------|------------|
| DRAWN | CR, DR, AB |
| CHECKED | KB |
| DATE | 10-21-16 |
| SCALE | AS NOTED |
| JOB NO. | 2011-64 |
| SHEET | |

A901

DOOR SCHEDULE AND DETAILS

DATE: 10-21-16