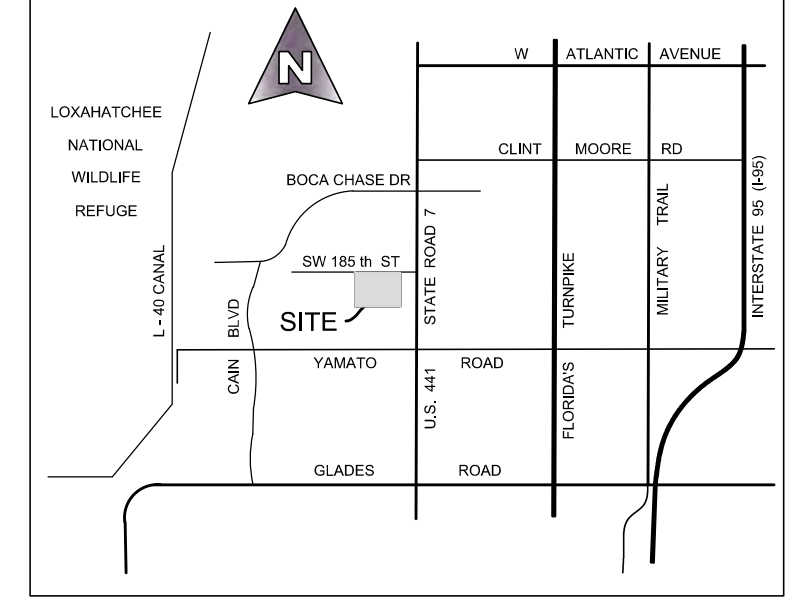
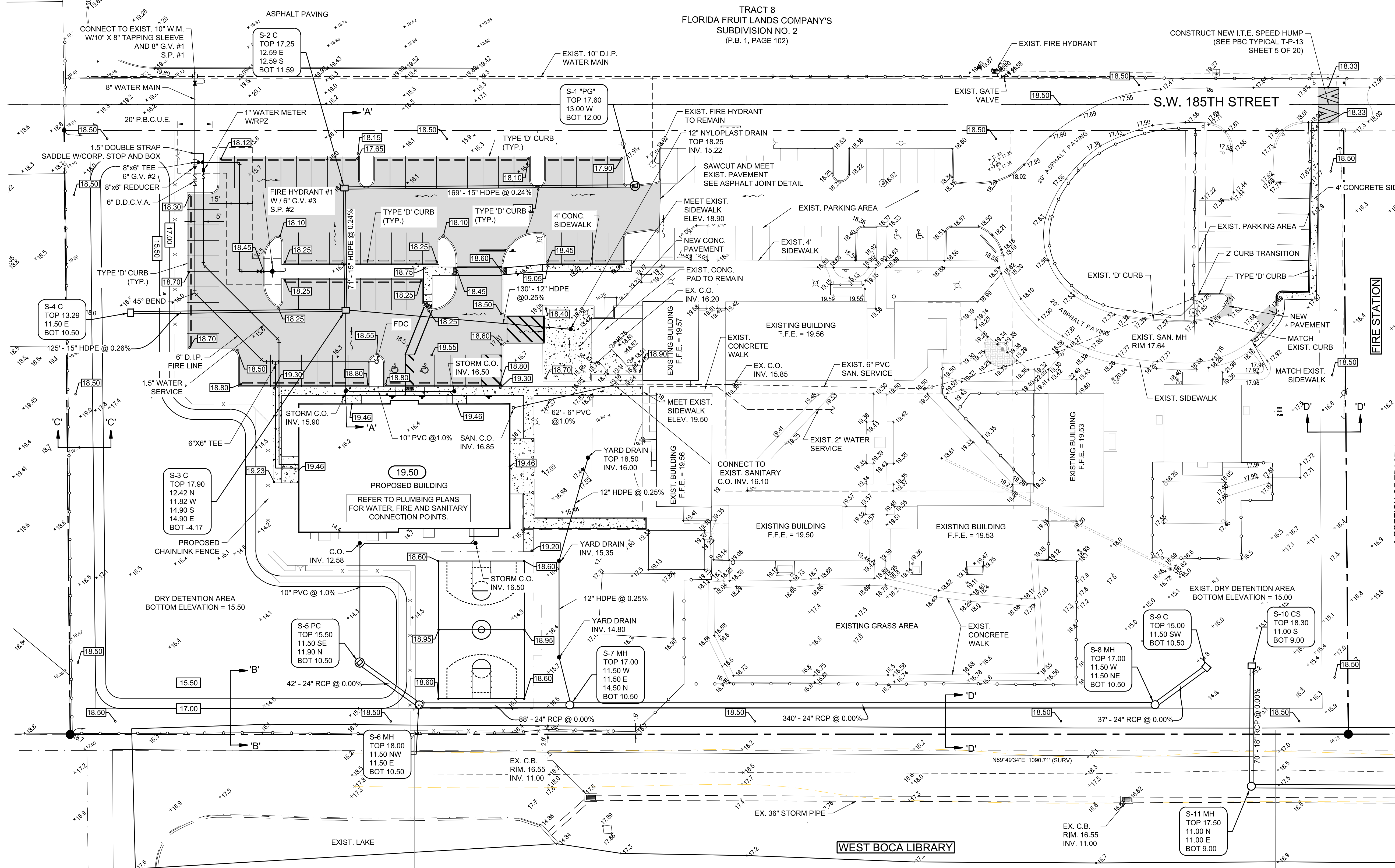
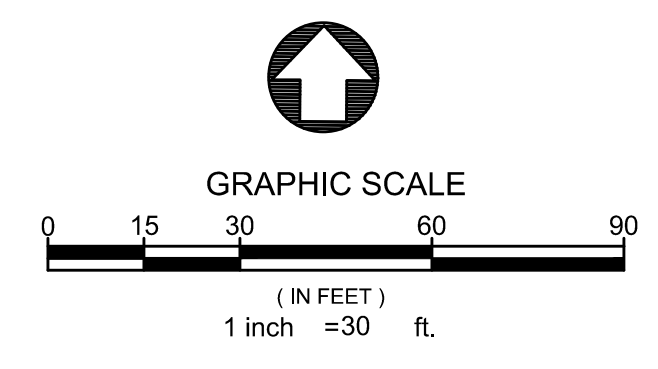


Date/Time : Thu, 10 Nov 2016 - 1:56pm

PathName : P:\1544\CIVIL\CAD\1544 DEV.dwg



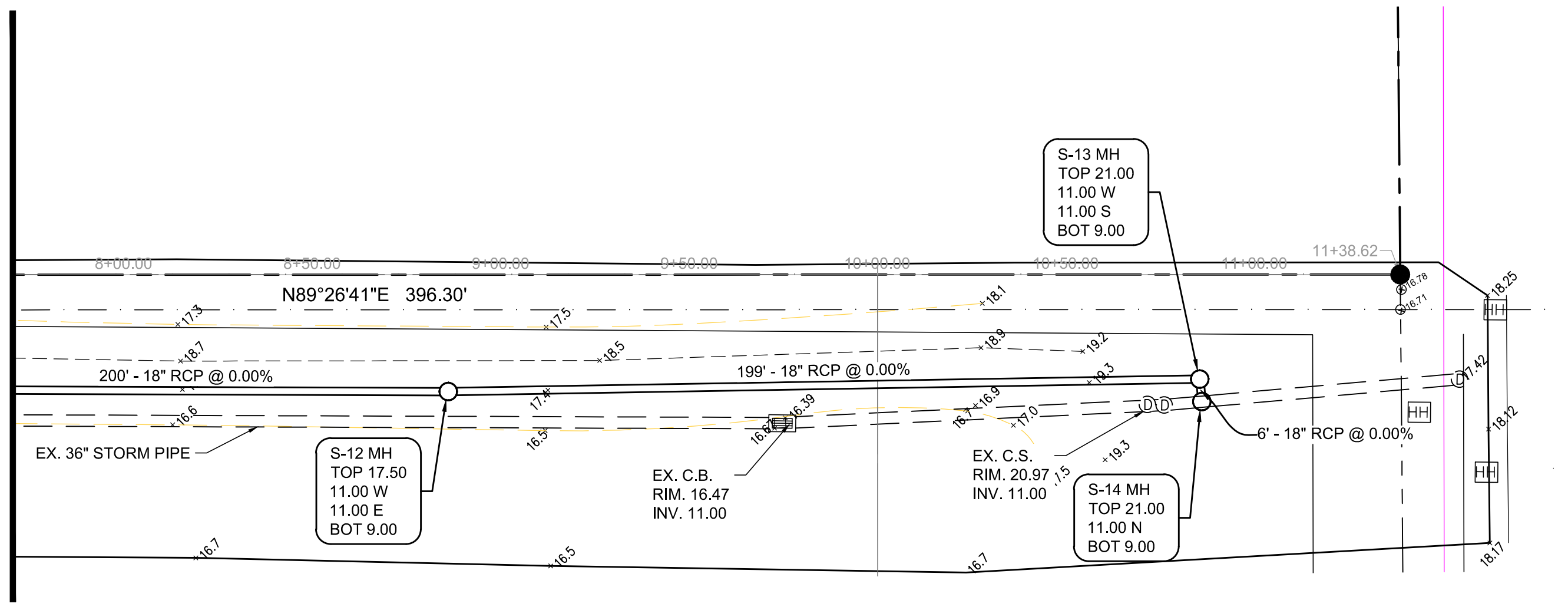
SEC 1, TWP 47, RNG 41E
LOCATION MAP
 N.T.S.



LEGEND

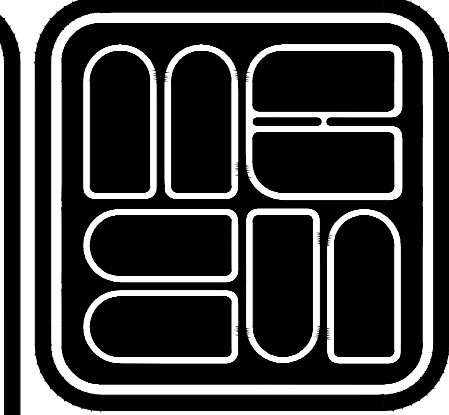
- STRUCTURE NUMBER, TYPE AND SIZE IF LARGER THAN 4', GRATE ELEVATION, INVERT AND DIRECTION, BOTTOM ELEVATION
- PROPOSED MANHOLE AND PIPE
- PROPOSED INLET AND PIPE
- EXISTING SPOT ELEVATION
- SLOPE DIRECTION
- PROPOSED ELEVATION
- FINISHED FLOOR ELEVATION
- CONCRETE PAVEMENT/SIDEWALK
- ASPHALT PAVEMENT
- FIRE HYDRANT ASSEMBLY
- C.O. CLEAN OUT
- D.D.C.V.A. DOUBLE DETECTOR CHECK VALVE
- S.P. SAMPLE POINT
- FDC FIRE DEPARTMENT CONNECTION
- PBC PALM BEACH COUNTY

MATCH LINE



NOTES:

1. ELEVATIONS SHOWN HEREON ARE NAVD 88. CONVERSION TO NGVD 29: NGVD 29 = NAVD 88 + 1.5'
2. THE REQUIRED MINIMUM PERIMETER ELEVATION SHALL BE AT OR ABOVE THE 25 YEAR - 3 DAY STORM EL. 18.26 NAVD / 19.76 NGVD.
3. MINIMUM ROAD ELEVATION TO BE 17.25 NAVD (3 YR-1 DAY ELEVATION = 17.14)
4. MINIMUM FINISHED FLOOR ELEVATION = 19.50 NAVD (100YR-3DAY ELEVATION = 19.46 NAVD)
5. ALL WALKS SHALL HAVE A MAXIMUM 1.5% CROSS SLOPE.
6. ALL CONSTRUCTION AND RESTORATION WORK WITHIN PALM BEACH COUNTY RIGHT-OF-WAY SHALL COMPLY WITH THE LATEST EDITION OF THE FDOT DESIGN STANDARDS AND THE FDOT STANDARD SPECIFICATIONS FOR ROAD AND BRIDGE CONSTRUCTION.
7. PAVEMENT MARKINGS AND GEOMETRICS SHALL BE IN ACCORDANCE WITH THE MANUAL OF UNIFORM TRAFFIC CONTROL DEVICES FOR STREETS AND HIGHWAYS AND PALM BEACH COUNTY TYPICAL T-P-13.



MICHAEL B. SCHORAH & ASSOCIATES, INC.
 ENGINEERS • SURVEYORS • DEVELOPMENT CONSULTANTS
 TEL: (561) 968-0080
 FAX: (561) 642-9726
 www.schorah.com
 EB# 2438
 1850 FOREST HILL BLVD., SUITE 206
 WEST PALM BEACH, FLORIDA 33406

REVISIONS	DATE	BY	DESCRIPTION

DRAWN/CHECKED:	RAB / JIV	SCALE:	1" = 30'	DATE:	AUGUST 2016
PROJECT:		FLORENCE FULLER CHILD DEVELOPMENT CENTER			
DESCRIPTION:		DEVELOPMENT PLAN			

JOB NO.	1544
SHEET NO.	6