

EST. 1988
RICK GONZALEZ, AIA
 PRESIDENT, AR-0014172
 300 CLEMATIS STREET
 WEST PALM BEACH
 FLORIDA 33401
 PH: (561) - 659 - 2383
 FAX: (561) - 659 - 5446
 www.regarchitect.com
 CORPORATION NUMBER
 AA-000247

VILLAGE COMMONS

SUITE 002B

WEST PALM BEACH, FL 33409

REVISIONS	NO.
▽	1
▽	2
▽	3
▽	4
DATE	10-17-16
SCALE	AS NOTED
DRAWN	-/SK/-
CHECKED	SR
REG No.	16445
© 2016	

OWNERSHIP AND USE OF THESE DOCUMENTS & SPECIFICATIONS AS INSTRUMENTS OF SERVICE ARE AND SHALL REMAIN THE PROPERTY OF THE ARCHITECT. NO PART OF THESE DOCUMENTS SHALL BE REPRODUCED OR TRANSMITTED IN ANY FORM OR BY ANY MEANS, ELECTRONIC OR MECHANICAL, INCLUDING PHOTOCOPYING, RECORDING, OR BY ANY INFORMATION STORAGE AND RETRIEVAL SYSTEM, WITHOUT PERMISSION IN WRITING AND WITH APPROPRIATE COMPENSATION TO THE ARCHITECT.

ELECTRICAL PLAN

E1.1

LIGHTING CONTROL SYMBOL LEGEND

TYPE / DESCRIPTION	REQ.	CATALOG NUMBER	VOLTS	LAMPS	WATTS	MOUNTING
① FLUORESCENT STRIP WITH MINIMUM 90 MINUTE BATTERY	COLUMBIA	ES3-323-EG-EL	120	(2) 30W T8	64	CEILING
② EXIT SIGN WITH MINIMUM 90 MINUTE BATTERY	EVALUATE	TEX SERIES	120	LED		

NOTES:

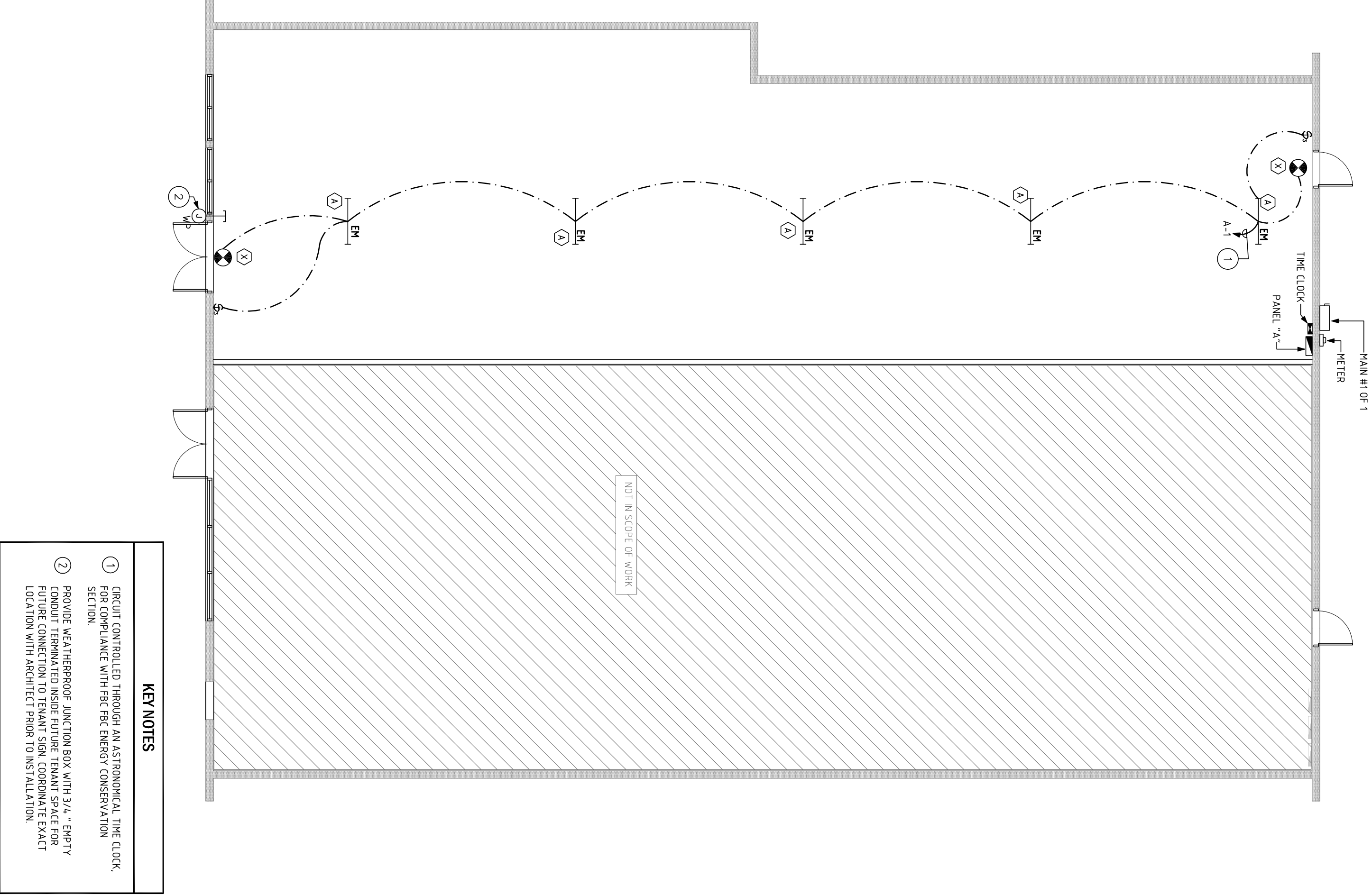
1. PROVIDE ELECTRONIC BALLAST FOR ALL FLUORESCENT LAMPED FIXTURES
2. MINIMUM FLUORESCENT LAMP COLOR TEMPERATURE SHALL BE 3500K
3. VERIFY BALLAST REQUIREMENTS FOR ALL FLUORESCENT FIXTURES. PROVIDE ELECTRONIC DIMMING
4. VERIFY ALL FIXTURE SELECTIONS PRIOR TO PURCHASE WITH OWNER/ARCHITECT

LIGHTING NOTES

1. ALL EXIT, EMERGENCY, AND BATTERY PACKS IN FLUORESCENT FIXTURES TO BE WIRED AHEAD OF CONTROL SWITCHES
2. ALL WALL MOUNTED EMERGENCY LIGHT FIXTURES SHALL BE MOUNTED AT HEIGHTS INDICATED ON THE PLANS
3. ALL DIMMER SWITCHES SHALL HAVE A PRESET MINIMUM RATING OF 10 KW.
4. ALL FIXTURE COUNT, SELECTIONS, AND EXACT LOCATIONS MUST BE VERIFIED WITH OWNER/ARCHITECT PRIOR TO PURCHASE
5. CONTRACTOR TO VERIFY IF ANY LOW VOLTAGE LIGHT FIXTURES REQUIRE STEP-DOWN TRANSFORMERS, QUANTITY AND LOCATION TO BE FIELD VERIFIED PRIOR TO CONSTRUCTION. PROVIDE ALL TRANSFORMERS AND INCLUDE IN BID.
6. ALL FIXTURES TO HAVE UL LISTED CERTIFICATION
7. ALL EXISTING AND NEW LUMINAIRES SHALL COMPLY WITH SECTION 58.03.00 DISCONNECTING MEANS OF THE NEC
8. CONTRACTOR TO PROVIDE LUMINAIRES TO CONFORM TO ENERGY CODE, THERMAL ENVIRONMENT FACTORS

ENERGY COMPLIANCE NOTE

1. AN AUTOMATIC THE CLOCK SHALL BE THE MEANS OF LIGHTING SHUTOFF PER PER ENERGY CONSERVATION SECTION FOR ALL AREAS WHERE OCCUPANCY SENSORS ARE NOT USED, AND IT SHALL CONTAIN AN ASTRONOMICAL THE CLOCK TO SHUT THE TENANT SPACE DOWN AT A SCHEDULED TIME OF DAY.
2. ALL LIGHT FIXTURES THAT ARE NOT WIRED THROUGH THE ASTRONOMICAL THE CLOCK SHALL BE VERIFIED WITH THE ARCHITECT PRIOR TO CONSTRUCTION. SENSORS WHICH MUST TURN LIGHTS OFF WITHIN 30 MINUTES AFTER AN OCCUPANT LEAVES THE SPACE
3. RECORD DRAWINGS OF INSTALLATION AND OPERATION MANUALS ARE TO BE PROVIDED TO THE OWNER AS SPECIFIED IN THE TENDON BUILDING CODE ENERGY CONSERVATION SECTION.



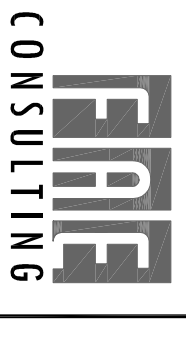
KEY NOTES

①	RELOC CONTROL LED THROUGH AN ASTRONOMICAL THE CLOCK EQUIPMENT SPACE WITH 90% ENERGY CONSERVATION SECTION
②	PROVIDE WEATHERPROOF JUNCTION BOX WITH 3/4" TYPICAL CONDUIT TERMINATED INSIDE FUTURE TENANT SPACE FOR FUTURE CONNECTION TO TENANT SIGN COORDINATE EXACT LOCATION WITH ARCHITECT PRIOR TO INSTALLATION.

ELECTRICAL PLAN
 1/8" = 1'-0"

PRIOR TO SUBMITTING THE BID, THE CONTRACTOR SHALL FIELD VERIFY ALL EXISTING CONDITIONS AND INFORM THE ARCHITECT AND THE ENGINEER OF ANY DISCREPANCY BETWEEN THESE DOCUMENTS AND THE EXISTING CONDITIONS AND SHALL INCLUDE IN THE BID TO CORRECT THE SAME AS DIRECTED. THE ENGINEER AND THE ARCHITECT ARE NOT RESPONSIBLE FOR ANY ADDITIONAL COSTS RESULTING FROM DISCREPANCIES BETWEEN THESE DOCUMENTS AND THE EXISTING CONDITIONS. NO CHANGES SHALL BE MADE TO THESE PLANS WITHOUT PRIOR APPROVAL FROM THE ENGINEER OF RECORD. ALL CHANGES SHALL BE SUBMITTED FOR REVIEW PRIOR TO INSTALLATION. NOT FOR BID UNTIL PERMIT HAS BEEN ISSUED.

CHECK SET 10/19/16



300 LORCK ROAD, SUITE #202
 WEST PALM BEACH, FL 33412
 TEL: (561) 591-9292 FAX: (561) 591-9898
 CERTIFICATE OF AUTHORIZATION NO. 281107
 BRUNLA PARKWAY, SUITE 200
 WEST PALM BEACH, FL 33411
 DONALD H. ALDRIN, JR., P.E. LICENSE #60561
 JASON BARBER, P.E. LICENSE #72050
 DESIGNED BY: -/SK/-
 P/N 16445