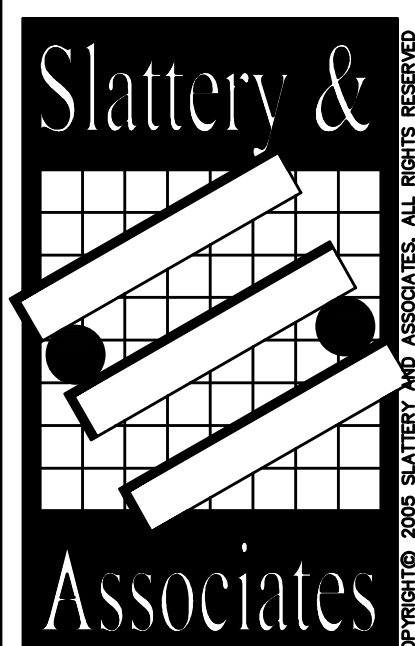


DOMESTIC WATER KEY NOTES

- ① SEE SHEET P0.1 FOR WATER HEATER DETAIL.
- ② EXTEND NEW 1-1/2" DOMESTIC WATER DISTRIBUTION PIPING TO NEW METER AS REQUIRED. CONTRACTOR SHALL FIELD VERIFY EXACT SIZE AND LOCATION PRIOR TO CONSTRUCTION.

REVISIONS	BY

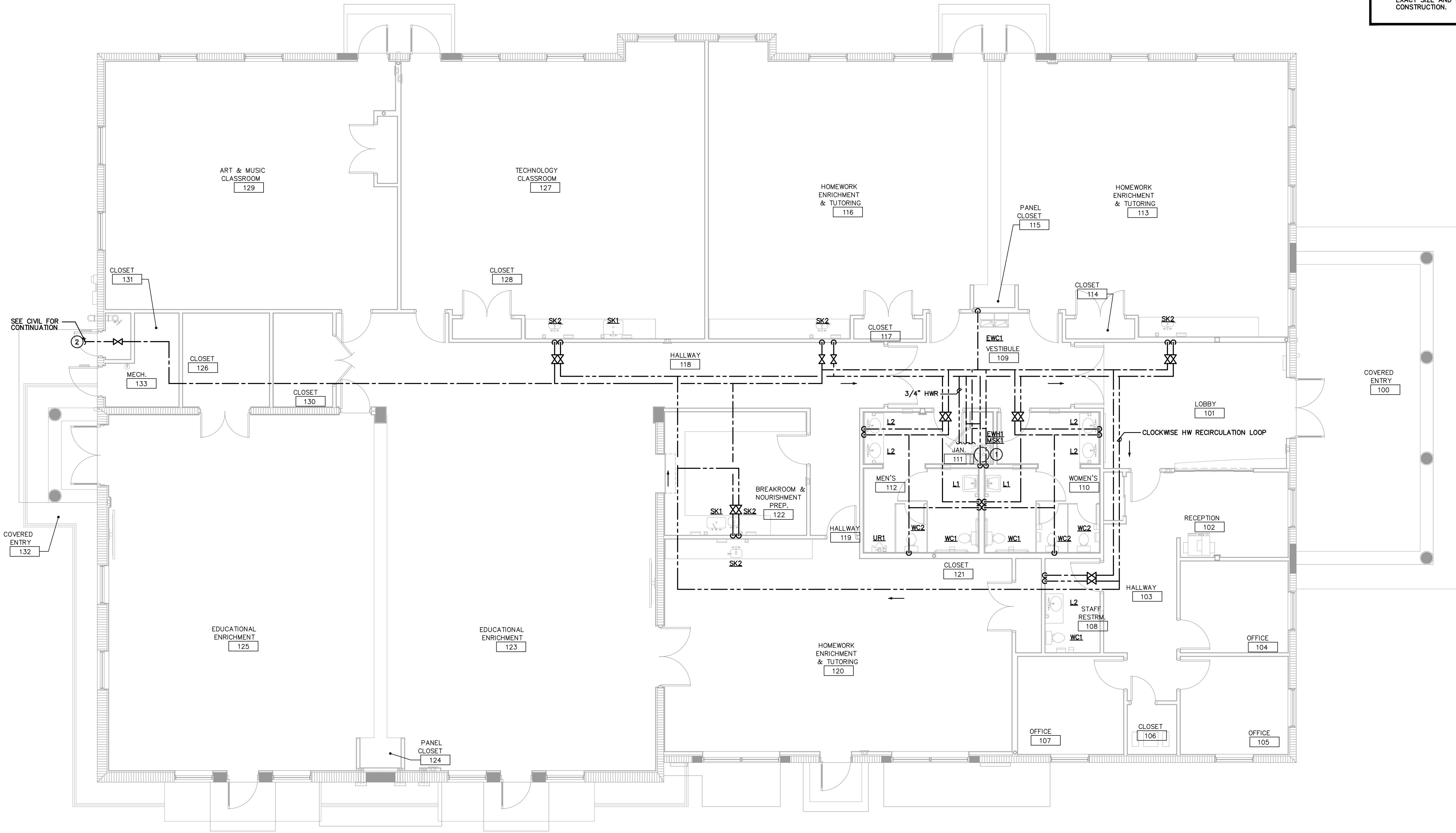


**ARCHITECTS
PLANNERS**
2060 NW BOCA RATON BLVD.
SUITE 2
BOCA RATON, FL 33431
TEL: 561-392-3848
FAX: 561-392-5402
WWW.SLATTERYARCHITECTS.COM

**ACTIVITY CENTER
FOR
FLORENCE FULLER CHILD DEVELOPMENT CENTERS
WEST CAMPUS
S.W. 185TH STREET
BOCA RATON, PALM BEACH COUNTY, FLORIDA**

**BIDDING
NOT FOR
CONSTRUCTION**
DATE OF SEAL: 4/2/08
SLATTERY & ASSOCIATES
FLORIDA REGISTRATION # AA0003381

ISSUED FOR PERMIT	
ISSUED FOR CONSTRUCTION	
KAMM CONSULTING PROJECT #	2016-0024
PROJECT MANAGER:	JOHN CHIRGWIN
KAMM Consulting	1407 West Newport Center Drive Deerfield Beach, Florida 33442 Phone 954.949.2200 Fax 954.949.2201 engineering@kammconsulting.com Certification of Authorization #8189
date	10.21.16
signed	
DRAWN	JWC/PG/AE
CHECKED	AK/MP
DATE	10-21-16
SCALE	AS NOTED
JOB NO.	2011-64
SHEET	
P3.1	



DOMESTIC WATER PLAN
3/16"-1'-0" NORTH

ISSUED FOR PERMIT
ISSUED FOR CONSTRUCTION
KAMM CONSULTING PROJECT # 2016-0024
PROJECT MANAGER: JOHN CHIRGWIN
KAMM Consulting
1407 West Newport Center Drive
Deerfield Beach, Florida 33442
Phone 954.949.2200 Fax 954.949.2201
engineering@kammconsulting.com
Certification of Authorization #8189
date 10.21.16
signed

DOMESTIC WATER PLAN

PHASE: C.D. SET 10-21-16