

REVISIONS	BY

Slattery & Associates
ARCHITECTS PLANNERS

2060 NW BOCA RATON BLVD.
 SUITE 2
 BOCA RATON, FL 33431
 TEL: 561-392-3848
 FAX: 561-392-5402
 WWW.SLATTERYARCHITECTS.COM

© COPYRIGHT © 2013 SLATTERY AND ASSOCIATES, ALL RIGHTS RESERVED.

ACTIVITY CENTER FOR FLORENCE FULLER CHILD DEVELOPMENT CENTERS WEST CAMPUS
 S.W. 185TH STREET
 BOCA RATON, PALM BEACH COUNTY, FLORIDA

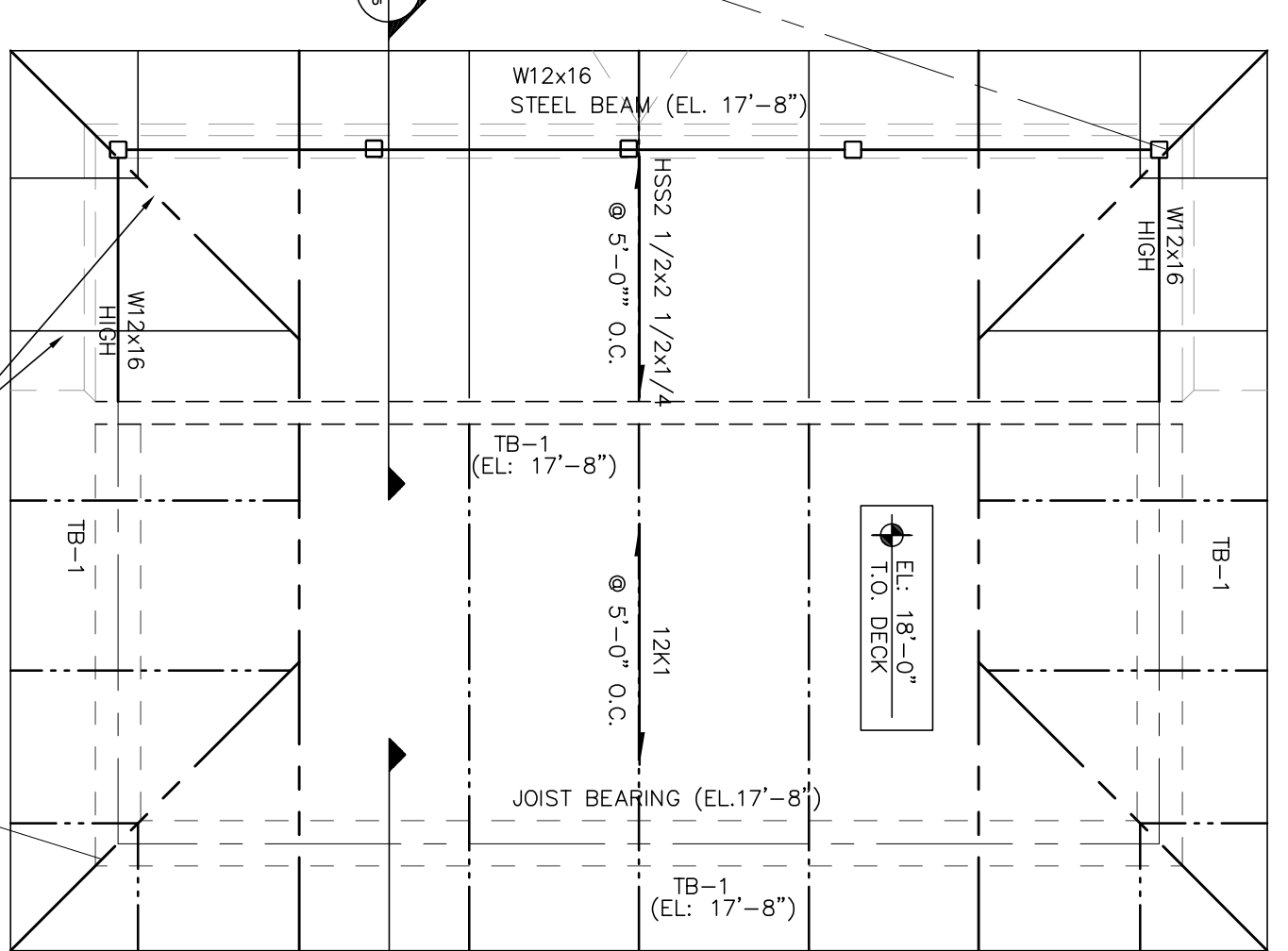
DATE	BY	REVISION
10-21-16	AS NOTED	AS NOTED
2011-11-14	AS NOTED	AS NOTED

ONIMB
Odinelli, Naccarato, Mignogna
 STRUCTURAL ENGINEERS

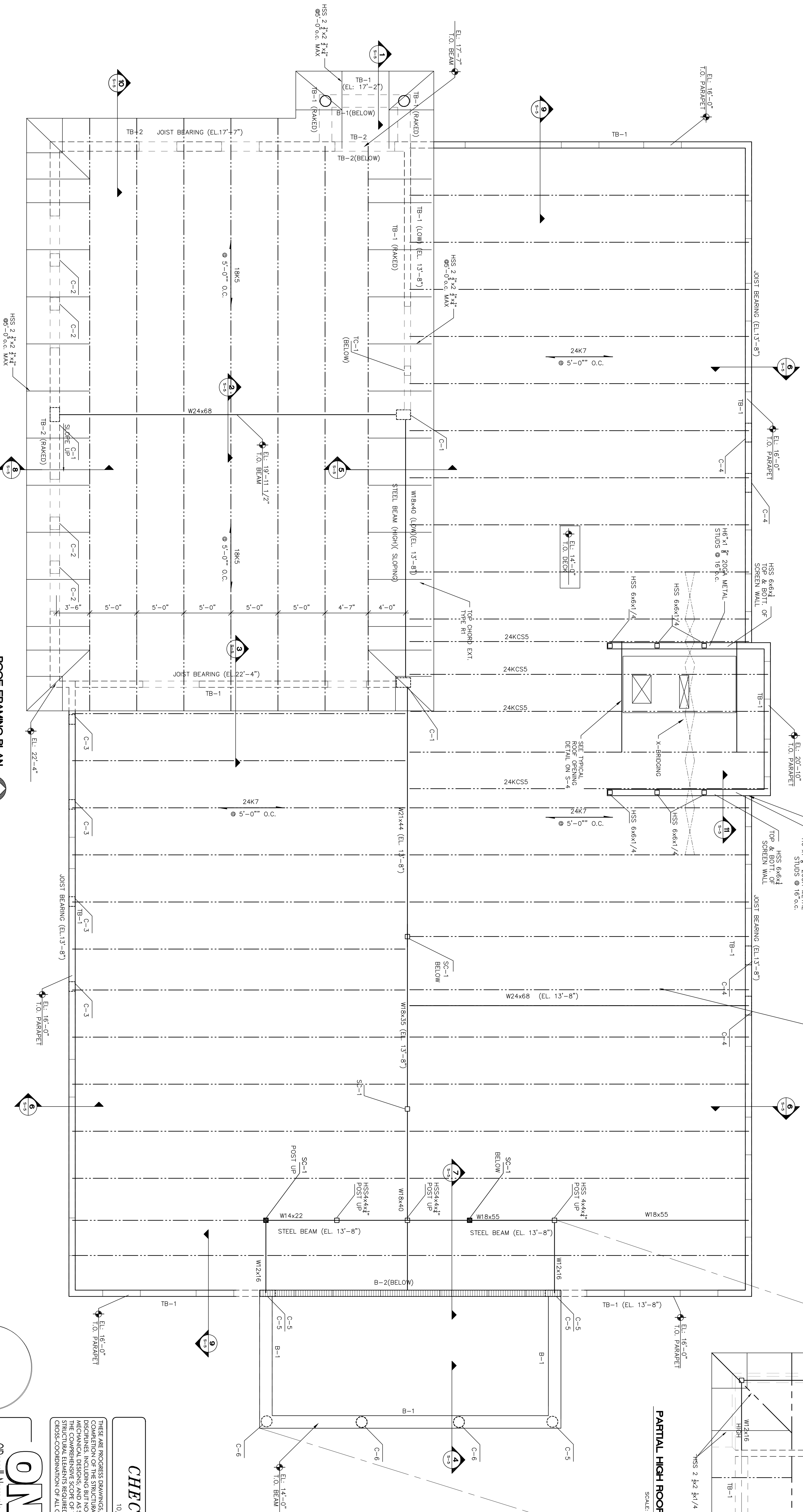
321 15TH STREET, SUITE 200
 WEST PALM BEACH, FLORIDA 33411
 (561) 833-7994 FAX (561) 833-6255

LIC #0004586
 JOB # 440.170

S-2



PARTIAL HIGH ROOF PLAN
 SCALE: 1/8"=1'-0"



ROOF FRAMING PLAN
 SCALE: 1/8"=3'-0"

Structural Drawing Updated
 Based on Architectural Backgrounds Dated 9-26-16

PALM JI ARCH
 REG. #6998

CHECK SET

10/21/16

THESE ARE ROOFERS DRAWINGS. THEREFORE THEY ARE ISSUED PRIOR TO THE COMPLETION OF THE ROOFING CONTRACT. THE CONTRACTOR SHALL BE RESPONSIBLE FOR VERIFYING THE ACCURACY OF ALL DIMENSIONS AND CONDITIONS OF ALL OTHER TRADES BEFORE BEING MADE.