

REVISIONS	BY

Slatery & Associates
ARCHITECTS
PLANNERS

2060 NW BOCA RATON BLVD.
 SUITE 2
 BOCA RATON, FL 33431
 TEL: 561-392-3848
 FAX: 561-392-5402
 WWW.SLATTERYARCHITECTS.COM

ACTIVITY CENTER
FOR
FLORENCE FULLER CHILD DEVELOPMENT CENTERS
WEST CAMPUS
S.W. 185TH STREET
BOCA RATON, PALM BEACH COUNTY, FLORIDA

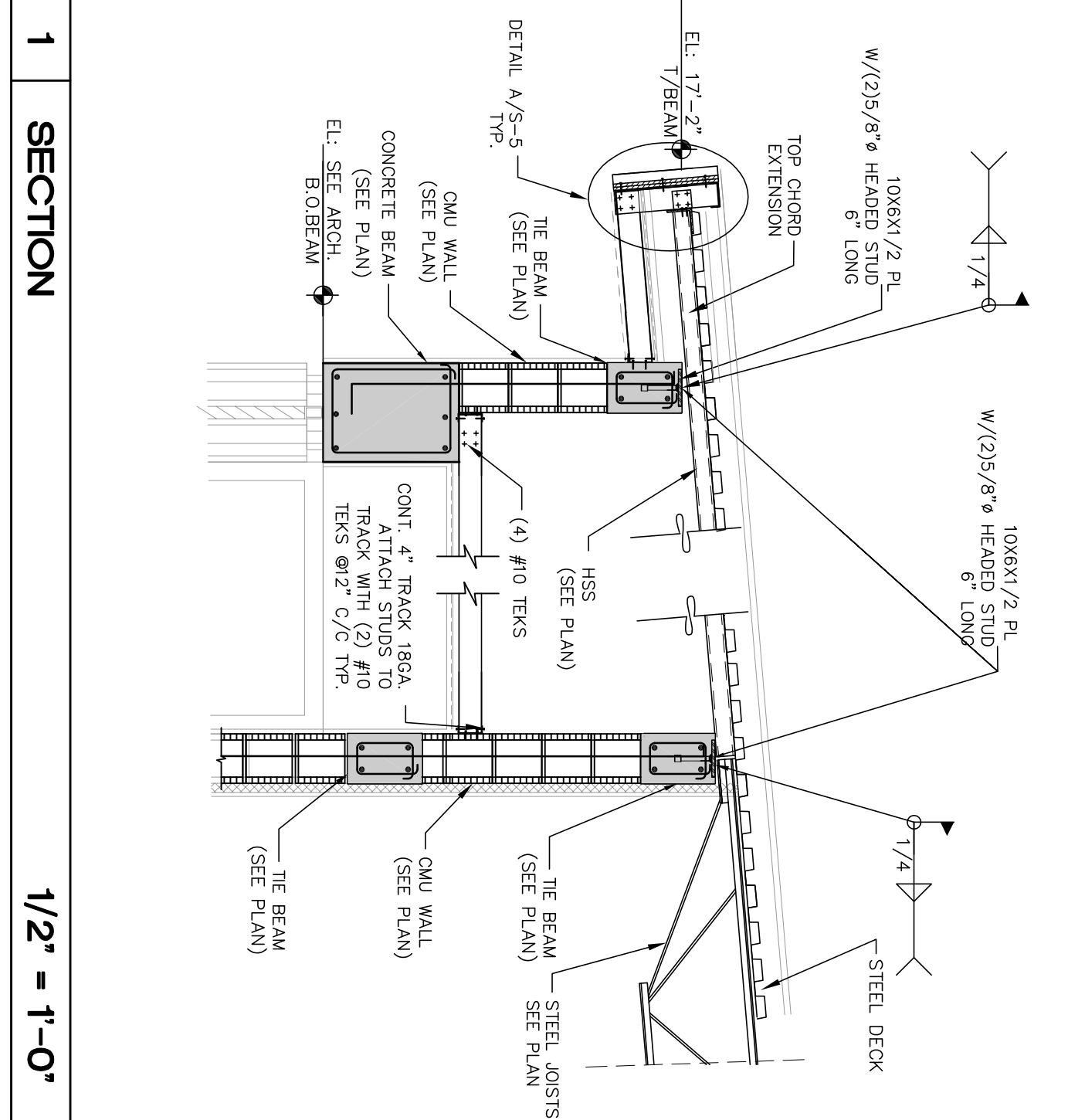
DATE	BY	CHKD	APP'D	SCALE	AS NOTED
10-21-16					
2011-1-4					

ONIM&J
Odinelli, Naccarato, Mignogna
STRUCTURAL ENGINEERS

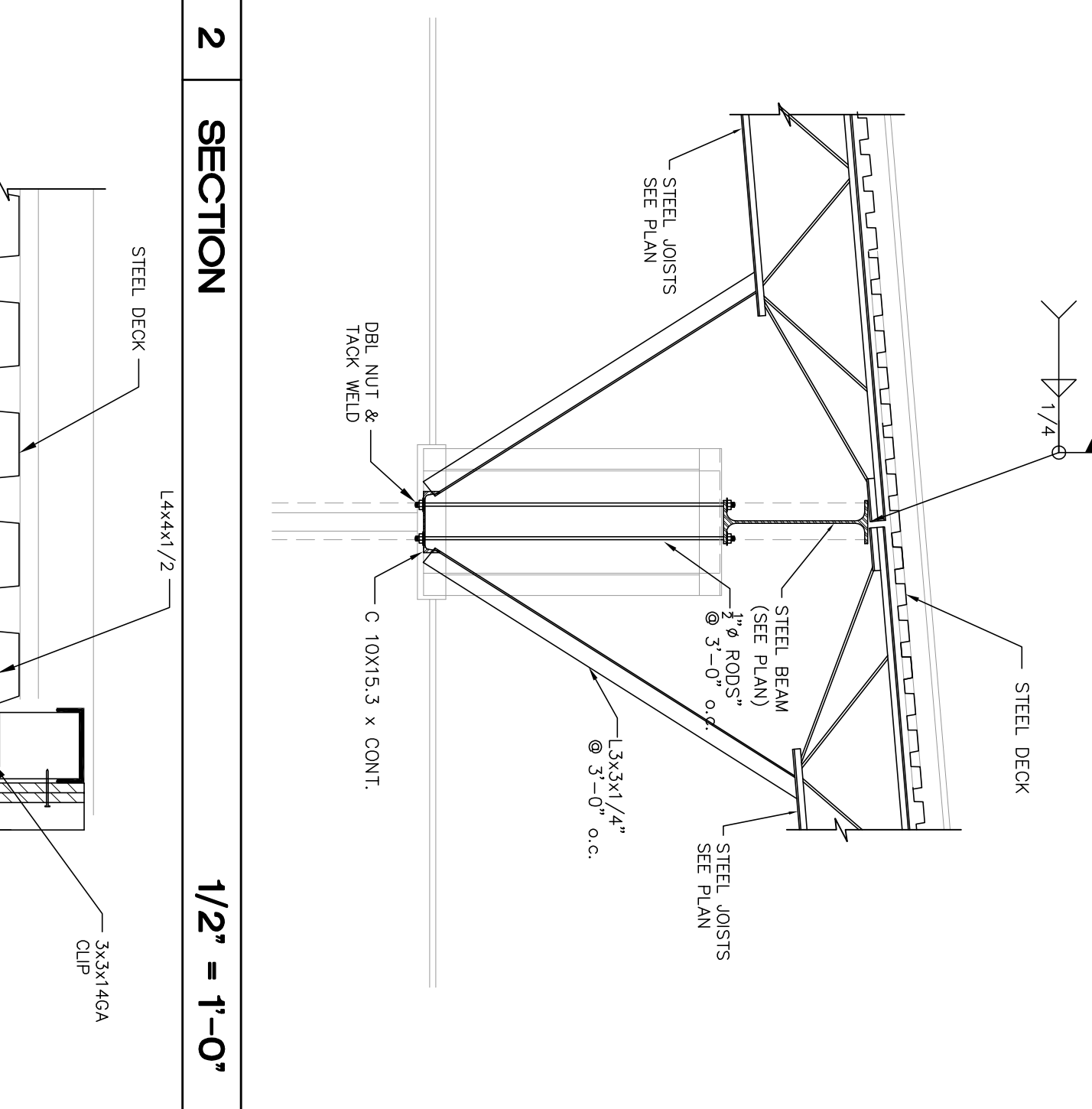
321 15TH STREET, SUITE 200
 WEST PALM BEACH, FLORIDA 33411
 (561) 833-7894 FAX (561) 833-6253

LIC #0004586
 JOB # 440.170

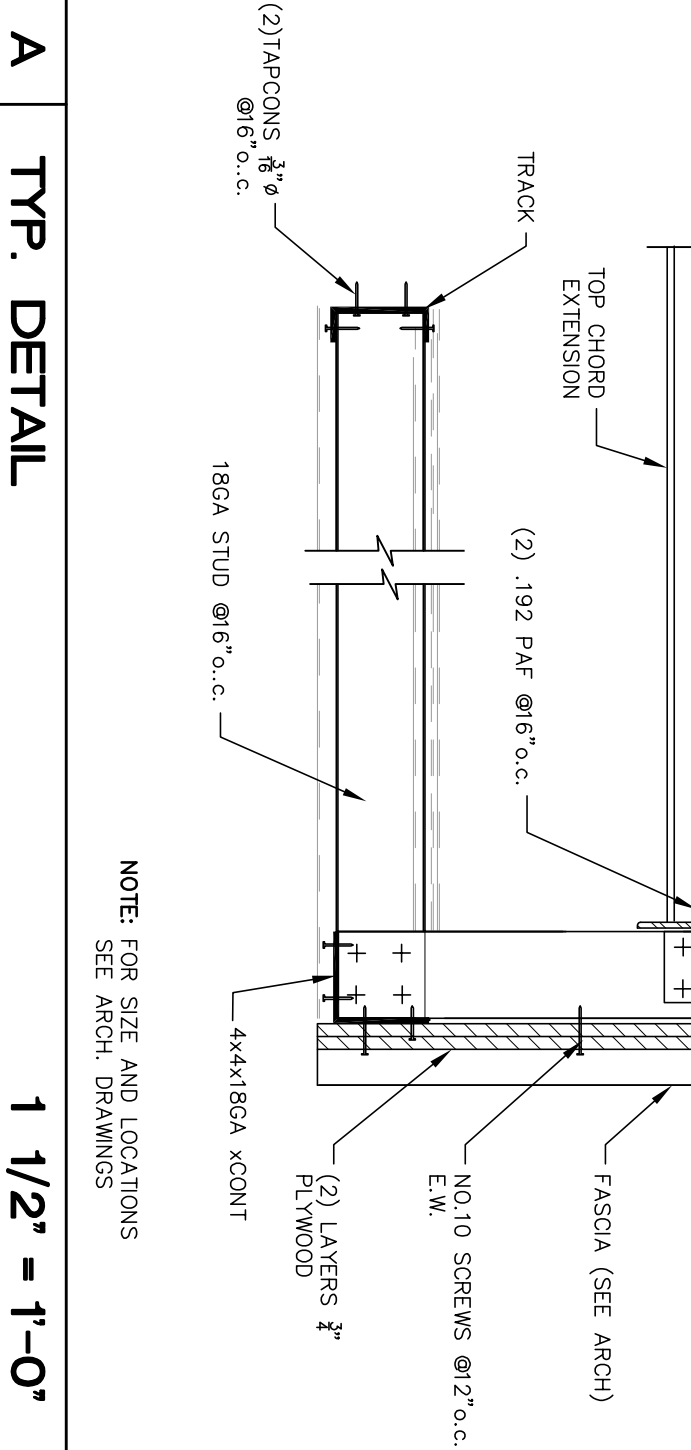
S-5



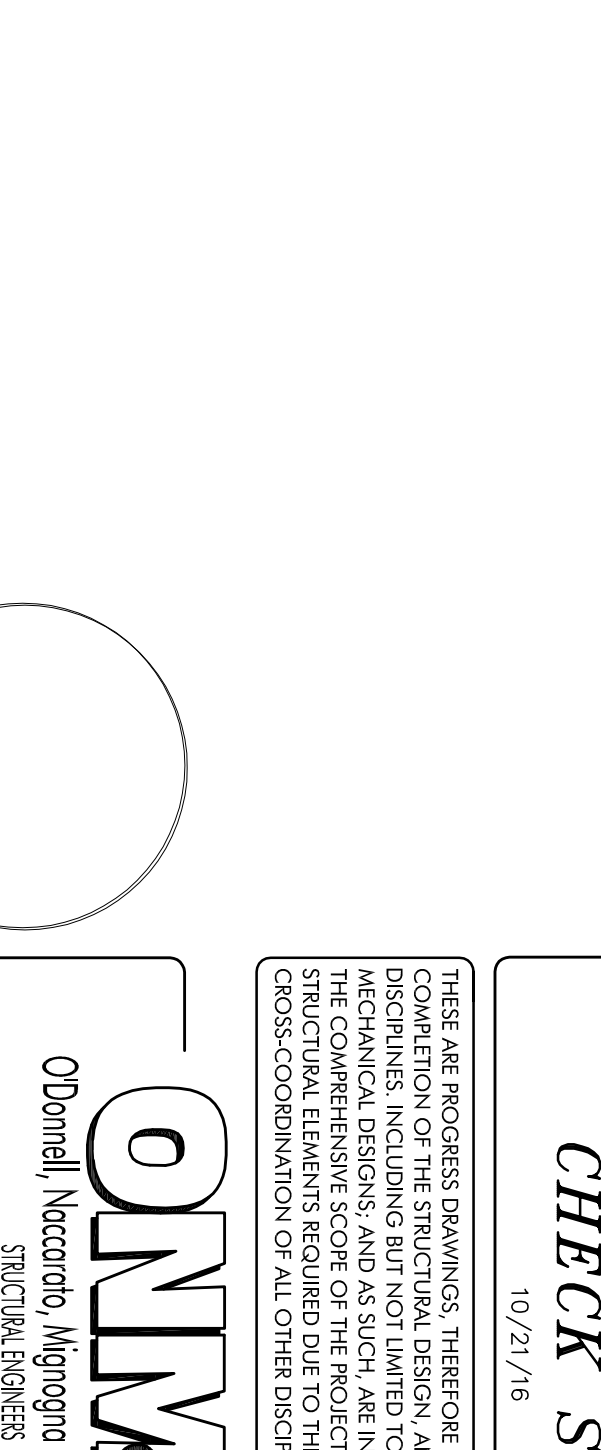
1 SECTION
1/2" = 1'-0"



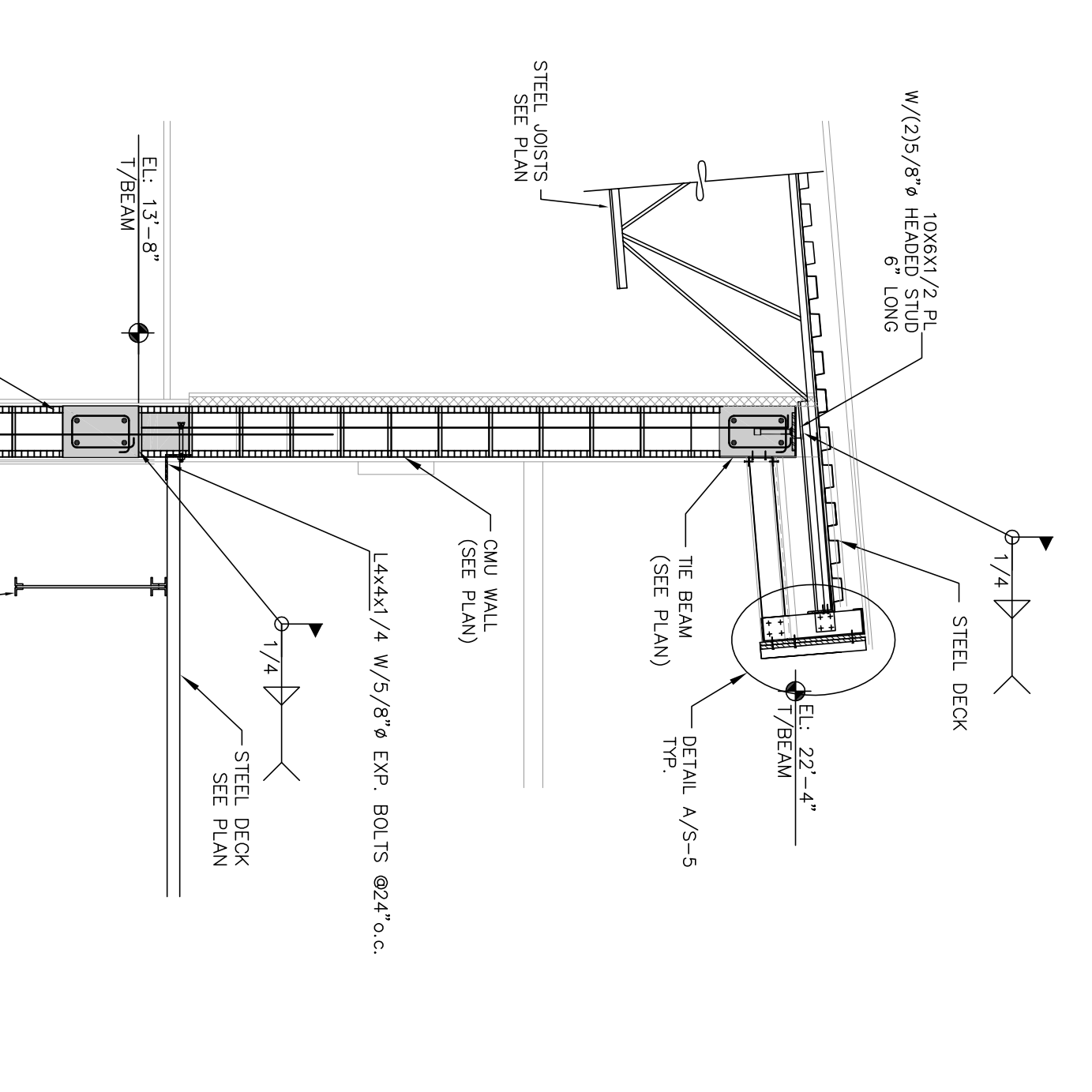
2 SECTION
1/2" = 1'-0"



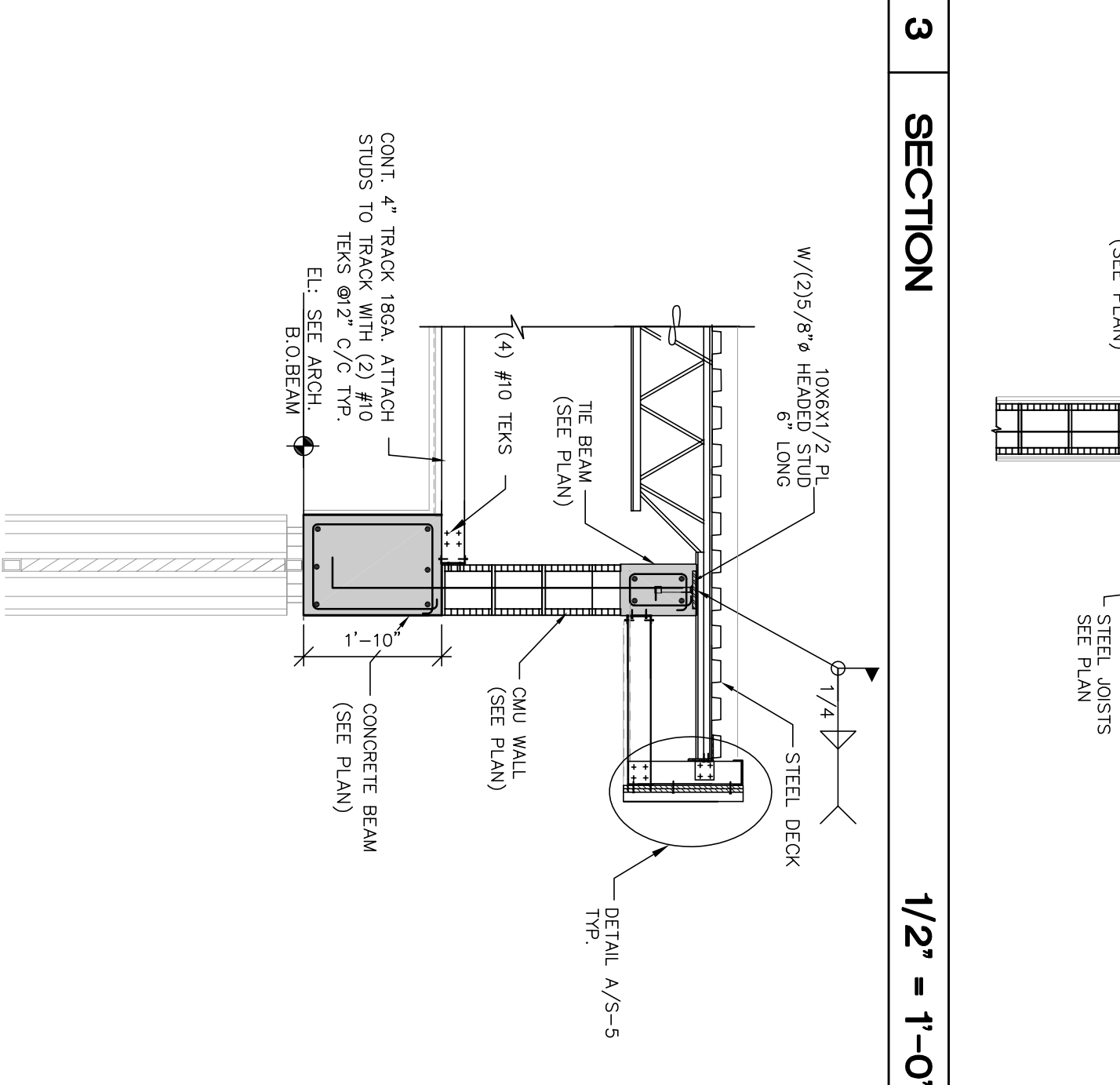
3 SECTION
1/2" = 1'-0"



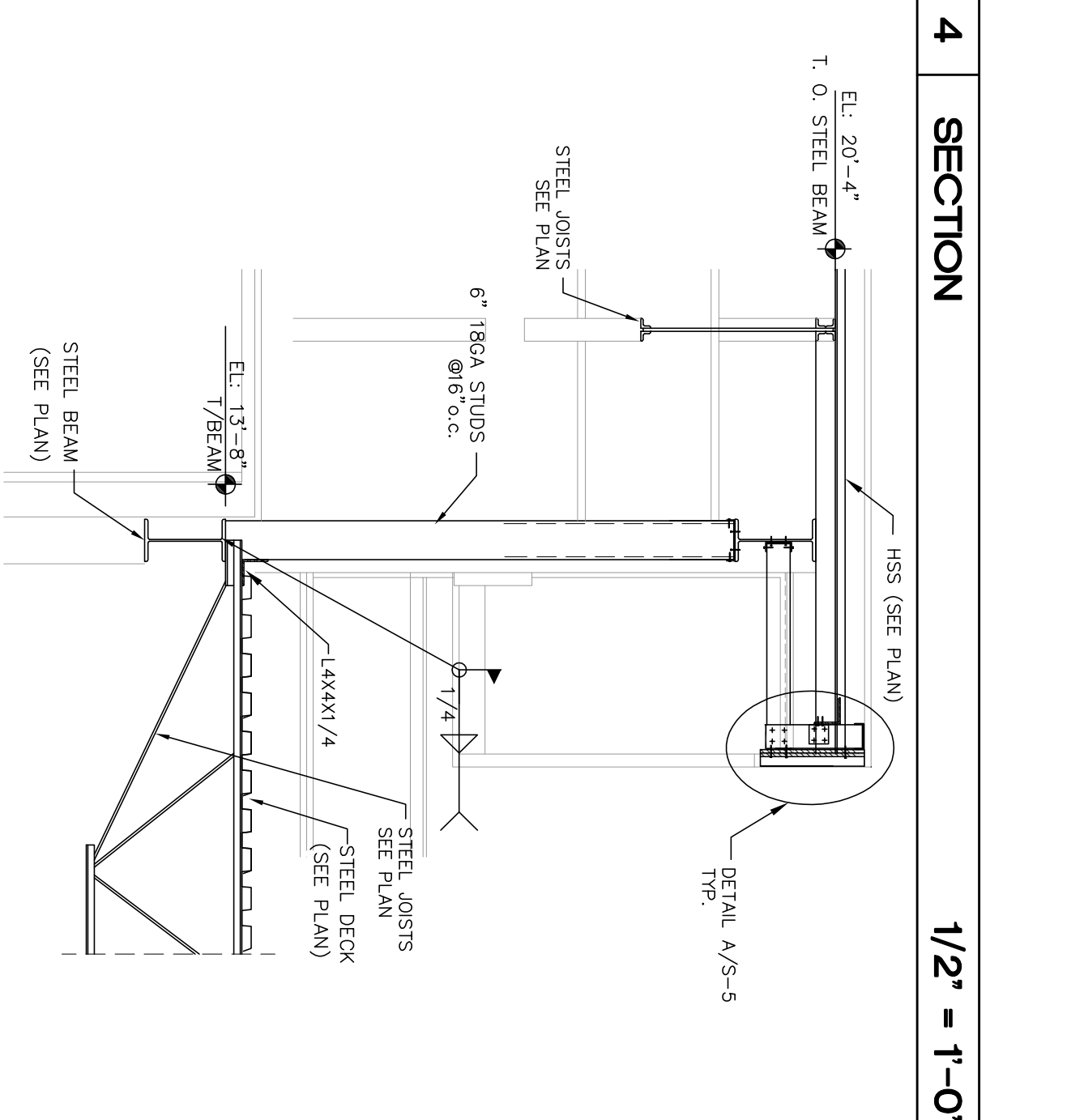
4 SECTION
1/2" = 1'-0"



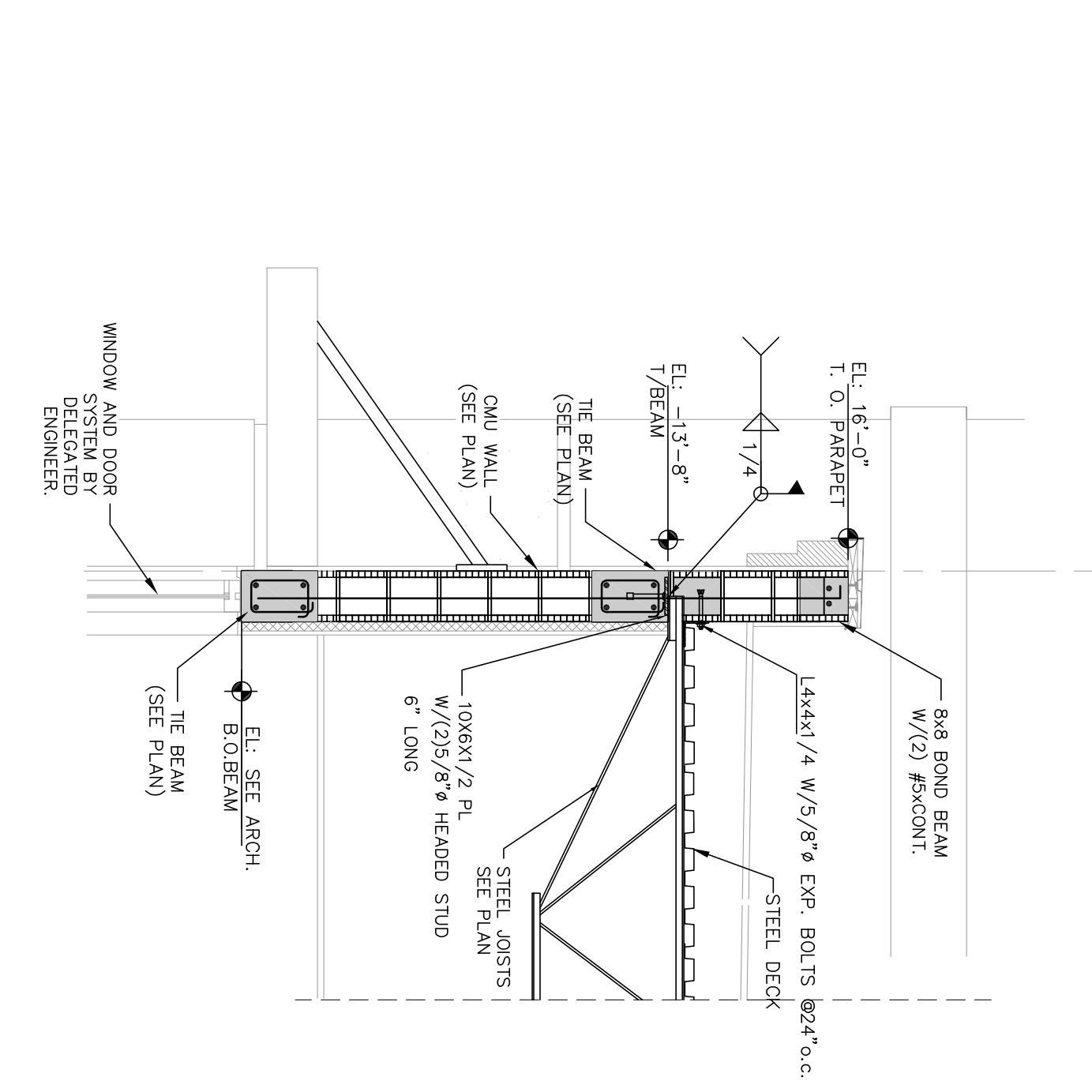
5 SECTION
1/2" = 1'-0"



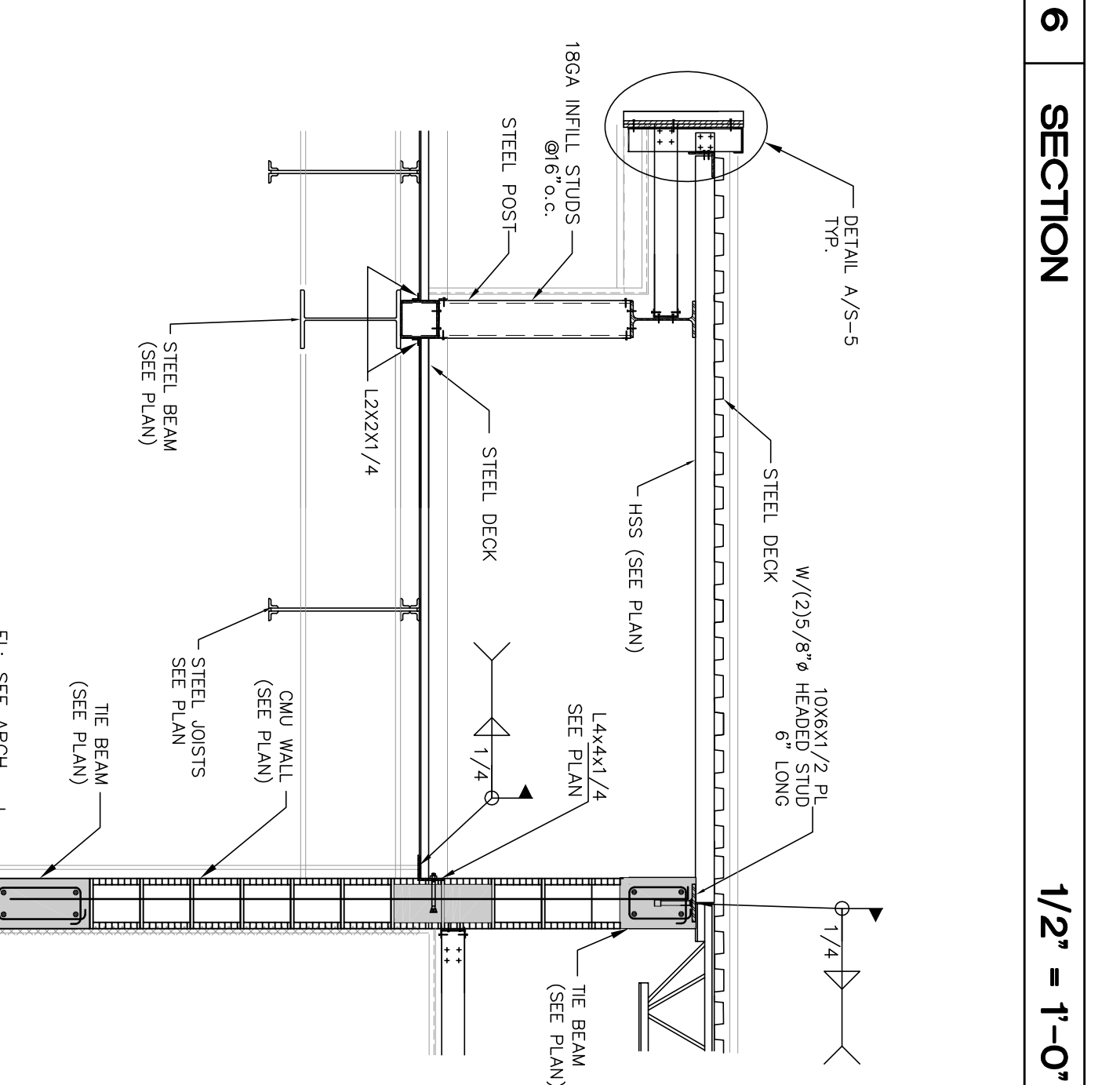
6 SECTION
1/2" = 1'-0"



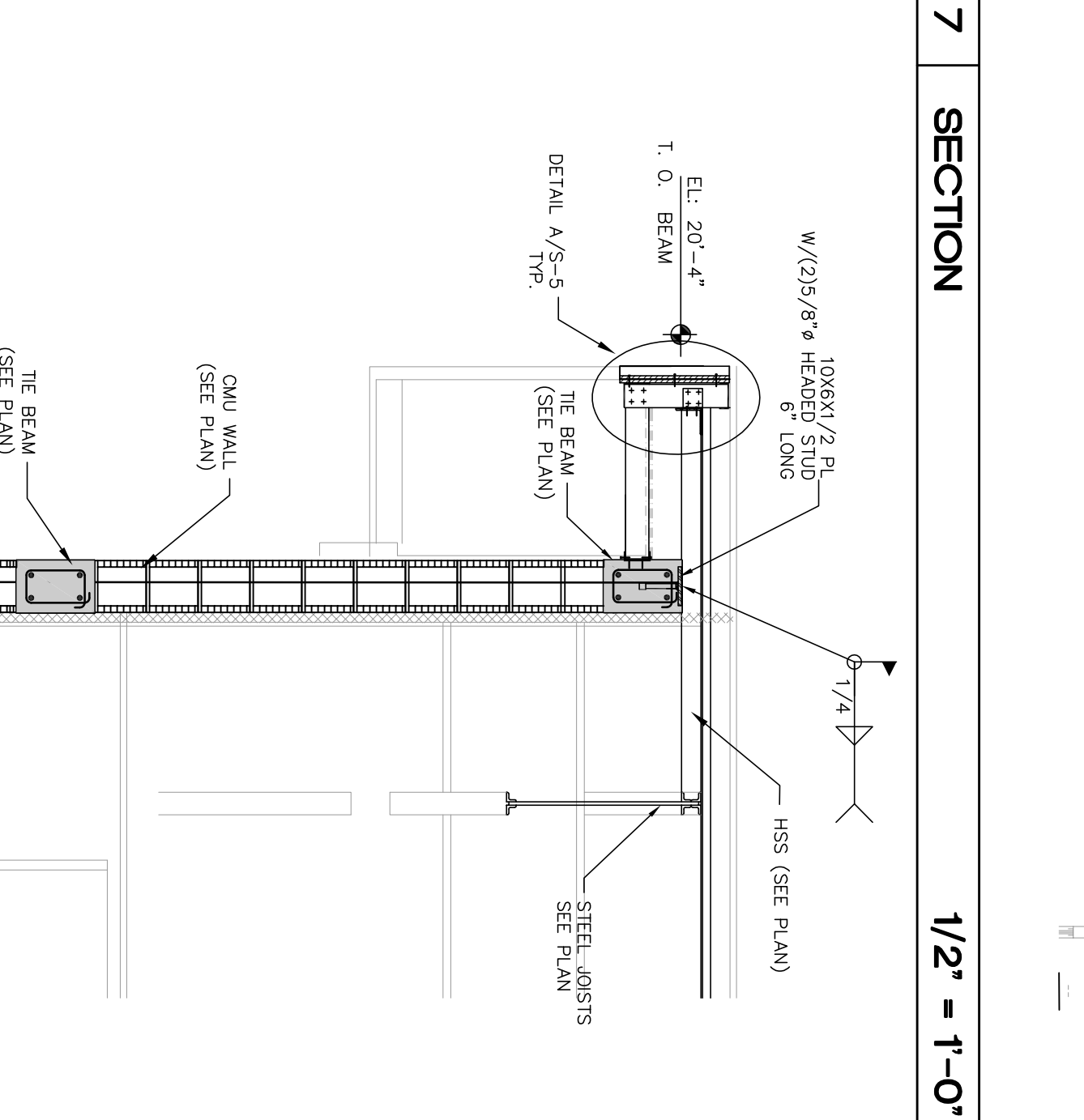
7 SECTION
1/2" = 1'-0"



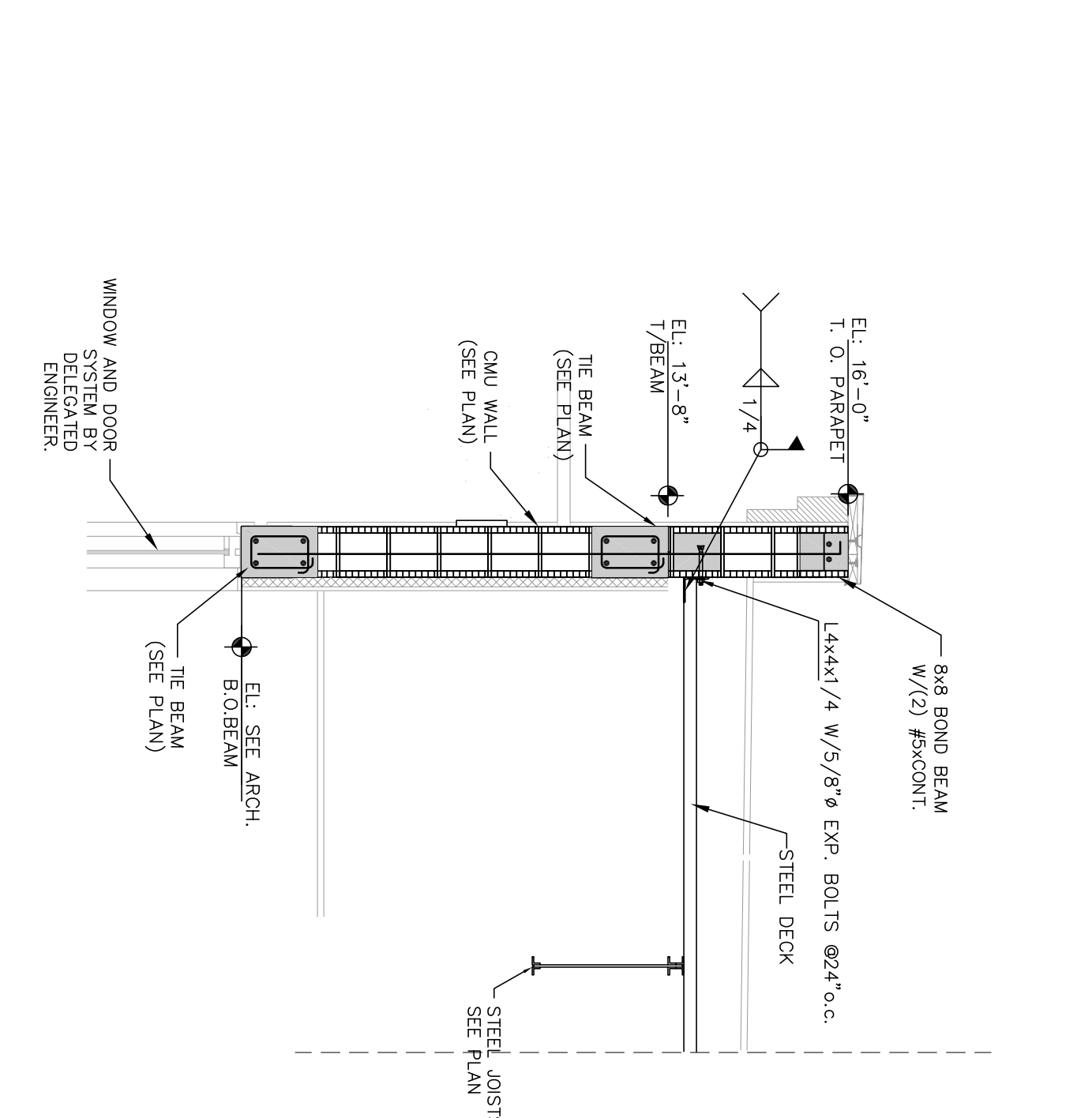
8 SECTION
1/2" = 1'-0"



9 SECTION
1/2" = 1'-0"



10 SECTION
1/2" = 1'-0"



11 SECTION
3/4" = 1'-0"

NOTE: FOR SIZE AND LOCATIONS SEE ARCH. DRAWINGS

CHECK SET
 10/21/16

THESE ARE PRELIMINARY DRAWINGS. THEREFORE, THEY ARE ISSUED WITHOUT WARRANTIES, INCLUDING BUT NOT LIMITED TO, ACCURACY, OR MECHANICAL DESIGN, AND AS SUCH, ARE INCOMPLETE BY NATURE FOR THE COMPREHENSIVE SCOPE OF THE PROJECT. ALLOWANCES FOR STRUCTURAL ELEMENTS REQUIRED DUE TO THE COMPLETION AND SUBSEQUENT MODIFICATION OF ALL OTHER DISCIPLINES SHOULD BE MADE.

Structural Drawing Updated
 Based on Architectural Backgrounds Dated 9-26-16

PURLO 21 8220
 REL: 80998