

AIR CONDITIONING SPLIT SYSTEM EQUIPMENT SCHEDULE

CONDENSING UNIT															
CU TAG	MANUFACTURER & MODEL	NOMINAL TONNAGE	CAP. STAGES	(S)EER/(P)LV	REFRIG./LBS	LIQ./SUCT. LINES	NO. FANS	FAN FLA(EA)	NO. COMP.	COMP.PLA(EA)	VOLTAGE/PH	MCA/MOCP	WEIGHT (LBS)	L x W x H (IN)	NOTES
CU-1	UDC-AD12A12MHS015C00D	8	1	13	R410A/-	3/8.3/4	1	0.50	1		208/3/60	38.8/50.0	599	-	1-9
CU-2	CARRIER/24ABC 36A003	3	1	16	R410A/-	3/8.7/8	1	0.50	1	14.1	208/1/60	18.1/30.0	165	35X35X29	1-9
CU-3	AIRSTAGE/AQUA72RLBV	6	1	12.5	R410A/-	3/8.3/4	1	0.75	1	13.5	208/3/60	41/50.0	490	32X32X29	1-8,10

AIR HANDLING UNIT																
AHU TAG	MANUFACTURER & MODEL	TOTAL MBH	SENSIBLE MBH	TOTAL CFM	O/A CFM	E.S.P. ("W.G.)	ENT. DB/MB	LEAV. DB/MB	ROWS/TP1	FAN HP/FLA	HEATER KW	VOLTAGE/PH	MCA/MOCP	WEIGHT (LBS)	L x W x H (IN)	NOTES
AHU-1	UDC-AD12A12MHS015C00D	105.7	12.8	1160	860	0.4	80/67	-	-	-	-	208/1	48.0/50.0	525	56X49X32	1-9
AHU-2	CARRIER/FV4CNF005T00	34.1	25.0	1200	120	0.4	80/67	-	-	0.50/4.30	8	208/1	44.7/45.0	172	22X23X54	1-9
MMU-1,2	AIRSTAGE/ASUA14RLAV	14	-	394	-	-	80/67	-	-	0.30/4.30	-	208/1	0.36/15	20	11X31X9	1-8
MMU-3,6	AIRSTAGE/ASUA12RLAV	12	-	330	-	-	80/67	-	-	0.20/4.30	-	208/1	0.24/15	20	11X31X9	1-8
MMU-4	AIRSTAGE/ASUA9RLAV	9.5	-	294	-	-	80/67	-	-	0.35/4.30	-	208/1	0.88/15	20	11X31X9	1-8
MMU-5	AIRSTAGE/ASUA18RLAV	18	-	494	-	-	-	-	-	-	-	-	-	20	11X31X9	1-8

- NOTES:**
- UNITS RATED PER ARI 210, 240 AND 270, APPROVED EQUAL: TRANE, YORK, LENOX, ETC.
 - PROVIDE WITH ELECTRIC EXPANSION VALVES, LIQUID LINE FILTER DRYER AND MULTI-USE SERVICE VALVES
 - PROVIDE COMPRESSOR WITH CRANKCASE HEATER AND MIN. 5-YEAR WARRANTY
 - PROVIDE HIGH AND LOW PRESSURE CONTROL AND OVER TEMPERATURE PROTECTION.
 - PROVIDE WEATHERPROOF ELECTRIC CONTROLS AND SINGLE SIDE SERVICE ACCESS
 - PROVIDE DISCONNECT BY ELECTRICAL CONTRACTOR FOR C.U., COORDINATE PRIOR TO PURCHASING
 - PROVIDE REFRIGERANT LINES SIZE AS RECOMMENDED BY MANUFACTURER, NOT TO EXCEED 50 FT. EQUIV. LENGTH FOR LONGER RUNS COORDINATE WITH MANUFACTURER PRIOR TO PURCHASE OR ANY WORK.
 - CONTRACTOR TO COORDINATE WITH ELECTRICAL CONTRACTOR TO INSURE THAT THE CONDENSING UNIT AND RACK ARE TIED TO THE LIGHTNING PROTECTION SYSTEM ON THE ROOF.
 - PROVIDE CO2 SENSOR AND MOTORIZED DAMPER.
 - COORDINATE VRF PIPING WITH MANUFACTURER.
- COORDINATION NOTE:**
MECHANICAL CONTRACTOR SHALL COORDINATE ALL ELECTRICAL REQUIREMENTS AND ACCESSORIES WITH ELECTRICAL CONTRACTOR PRIOR TO PURCHASING AND INSTALLATION AND SHALL BRING ANY DISCREPANCIES TO THE ATTENTION OF ENGINEER

OUTSIDE AIR CALCULATIONS

(PER TABLE 403.3, FLORIDA BUILDING CODE 5TH EDITION (2014) MECHANICAL)

AREA SERVED OR UNIT TAG	NET OCCUPIABLE AREA SQ.FT.	AREA OUTDOOR AIR RATE (RA) CFM/FT ²	TOTAL NO. OF PEOPLE	PEOPLE OUTDOOR AIR RATE (RP) CFM/PERSON	DEFAULT VALUES OCC. DENS. P/1000FT ² FL. AR.	TOTAL NO. OF PEOPLE FROM DEFAULT VALUES	COMBINED OUTDOOR AIR RATE CFM/PERSON	TOTAL CFM O/A REQUIRED	TOTAL CFM O/A PROVIDED	NOTES
RESTROOMS	270	0.06	4	5.0	-	-	16+20	36	40	SEE NOTES
DINING AREA 1	207	0.18	15	7.5	-	-	37+113	150	150	SEE NOTES
DINING AREA 2	169	0.18	12	7.5	-	-	30+90	120	120	SEE NOTES
DINING AREA 3	128	0.18	9	7.5	-	-	23+68	91	95	SEE NOTES
KITCHEN	131	0.12	10	7.5	-	-	31+75	106	350	SEE NOTES
BAR	188	0.18	14	7.5	-	-	68+105	173	175	SEE NOTES
WAITING	157	0.06	14	5.0	-	-	9+70	79	80	SEE NOTES
KITCHEN/BAR	320	0.06	14	5.0	-	-	9+70	79	80	SEE NOTES
TOTAL	1570.0	-	-	-	-	-	-	821.0	1090.0	-

- NOTES:**
- CALCULATIONS ARE BASED ON ESTIMATED MAX. OCCUPANCY RATES PER ARCHITECTURAL PLANS AND TABLE 403.3 FLORIDA BUILDING CODE 5TH EDITION (2014) MECHANICAL.
 - FOR OFFICE AND OTHER SIMILAR AREAS CALCULATIONS ARE BASED ON CONTINUOUS OCCUPANCY.

SUPPLY AIR GRILLE SCHEDULE

TAG	MANUF. & MODEL	FACE SIZE	NECK SIZE	MATERIAL	FRAME	FINISH	DAMPER	THROW	NC	CFM RANGE	NOTES
A	TITUS/ TDCA-AA	24X24	SEE SCH.	ALUM.	NOTE #3	OFF WHITE	-	4-WAY	MAX. 30	SEE SCH.	1-6
B	TITUS/ TDCA-AA	12X12	SEE SCH.	ALUM.	NOTE #3	OFF WHITE	-	4-WAY	MAX. 30	SEE SCH.	1-6
C	TITUS/ 27ZFL	NECK 4 1-3/4"	SEE PLAN	ALUM.	SIDE WALL	OFF WHITE	-	-	MAX. 30	SEE PLAN	4

- (*) EQUIVALENT MANUFACTURER: METALAIR, PRICE, CARNES, T & B, NAILOR
- GENERAL NOTES:**
- PROVIDE SPIN-IN COLLAR AT TRUNK TO FLEX DUCT CONNECTION.
 - PROVIDE TYPICAL 4-WAY DIFFUSION, 2-WAY OR 3-WAY ONLY WHERE INDICATED ON PLAN
 - REFER TO ARCHITECT PLANS FOR CEILING TYPE.
 - CONTRACTOR TO COORDINATE FINAL SELECTION WITH ARCHITECT AND OWNER
 - FLEX DUCT SIZE TO BE SAME AS DIFFUSER NECK SIZE.
 - PROVIDE INSULATION ON THE BACK OF DIFFUSER IF IN UNCONDITIONED SPACE
 - PROVIDE END CAP FOR LINEAR DIFFUSERS.
 - ADJUST LENGTHS TO LINE UP WITH INTERIOR DESIGNER'S PLANS.
 - PROVIDE INSULATION PLENUM
- | FLEX SCHEDULE | |
|---------------|-------------|
| 6" | 50-125 CFM |
| 8" | 130-200 CFM |
| 10" | 205-330 CFM |
| 12" | 335-450 CFM |
| 14" | 455-600 CFM |
| 16" | 605-700 CFM |
- CONTRACTOR SHALL VERIFY WITH ARCHITECT AND TENANT/OWNER, PRIOR TO ANY PURCHASING OR INSTALLATION, IF A BUILDING STANDARD HAS TO BE FOLLOWED REGARDING A SPECIFIC MODEL OR MANUFACTURER AND SHALL BRING ANY DISCREPANCY TO THE ATTENTION OF ENGINEER.

RETURN AIR GRILLE SCHEDULE

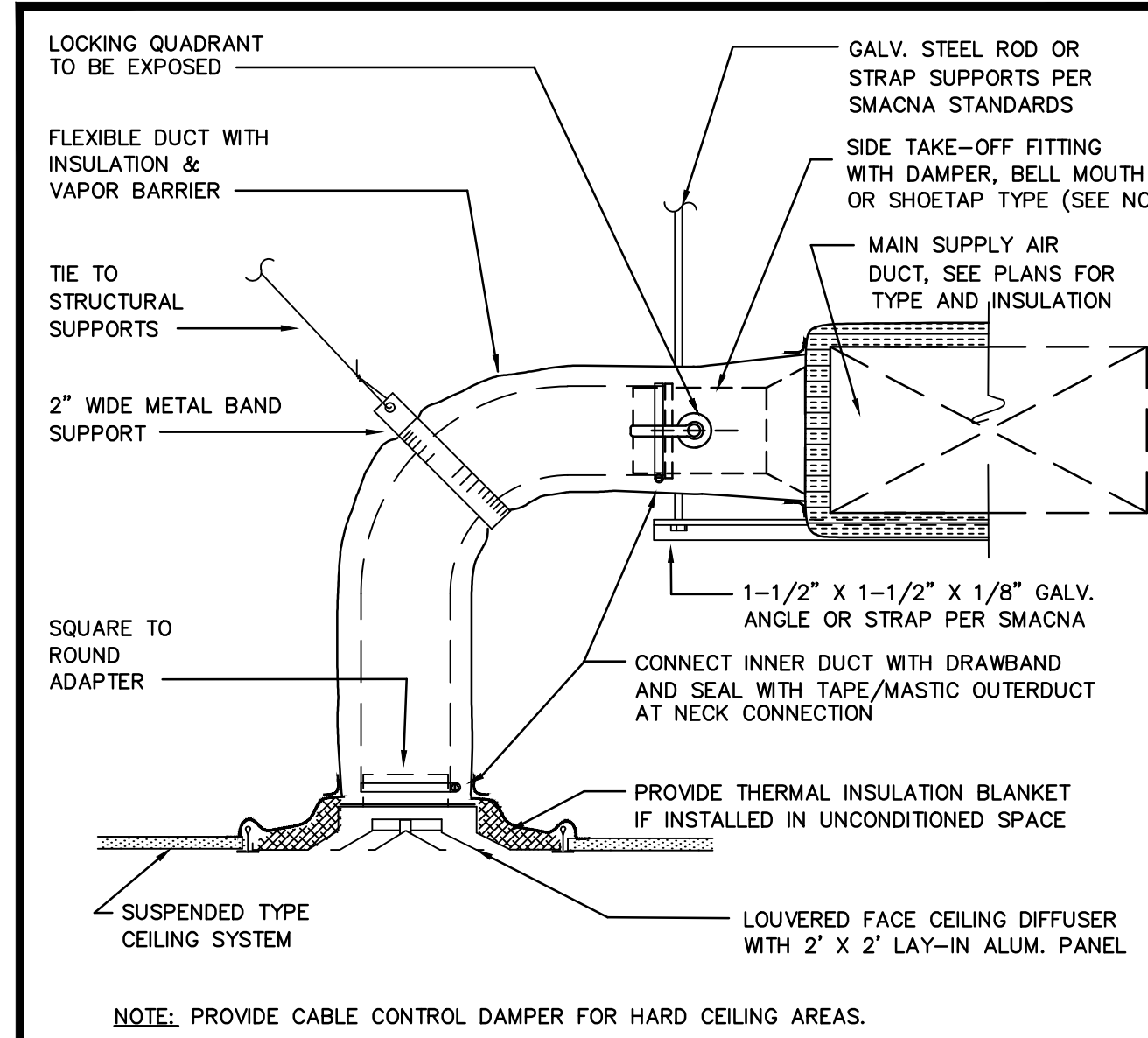
TAG	MANUF. & MODEL	FACE SIZE	NECK SIZE	MATERIAL	FRAME	FINISH	DAMPER	THROW	NC	CFM RANGE	NOTES
AA	TITUS/PAR-AA	24X24	SEE SCH.	ALUM.	NOTE #1	OFF WHITE	-	-	MAX. 30	SEE SCH.	1-3

- (*) EQUIVALENT MANUFACTURER: METALAIR, PRICE, CARNES, T & B, NAILOR
- GENERAL NOTES:**
- REFER TO ARCHITECT PLANS FOR CEILING TYPE.
 - CONTRACTOR TO COORDINATE FINAL SELECTION WITH ARCHITECT AND OWNER.
 - PROVIDE INSULATION ON THE BACK OF DIFFUSER IF IN UNCONDITIONED SPACE
 - PROVIDE END CAP FOR LINEAR DIFFUSERS.
 - ADJUST LENGTHS TO LINE UP WITH INTERIOR DESIGNER'S PLANS.
- | NECK SIZE | CFM RANGE | NECK SIZE | CFM RANGE |
|-----------|-----------|-----------|------------|
| 6X6 | 0-150 CFM | 15X15 | 0-900 CFM |
| 8X8 | 0-250 CFM | 18X18 | 0-1350 CFM |
| 10X10 | 0-400 CFM | 22X22 | 0-2000 CFM |
| 12X12 | 0-600 CFM | | |
- CONTRACTOR SHALL VERIFY WITH ARCHITECT AND TENANT/OWNER, PRIOR TO ANY PURCHASING OR INSTALLATION, IF A BUILDING STANDARD HAS TO BE FOLLOWED REGARDING A SPECIFIC MODEL OR MANUFACTURER AND SHALL BRING ANY DISCREPANCY TO THE ATTENTION OF ENGINEER.

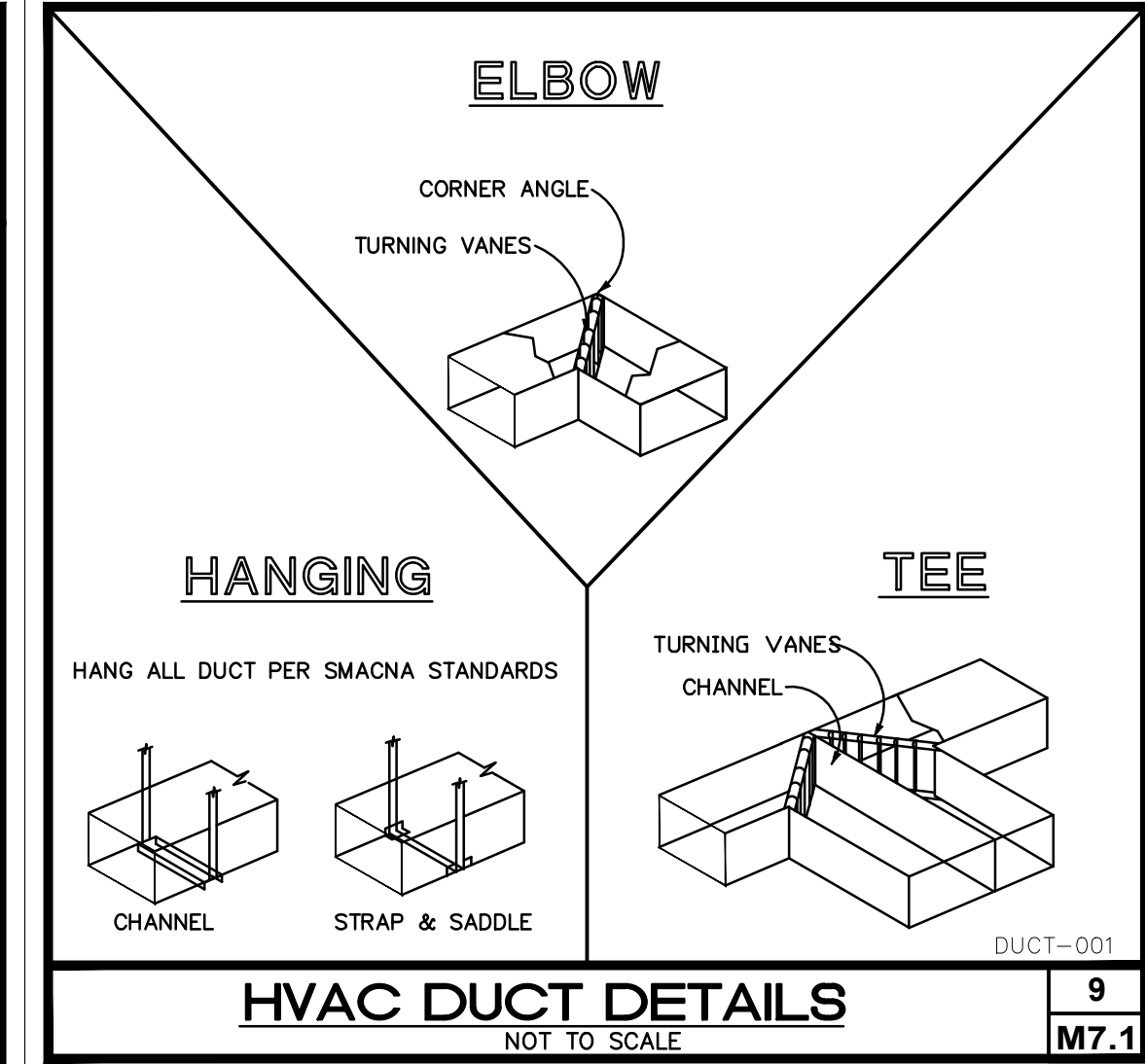
FAN SCHEDULE

SELECTION DATA				FAN DATA				MOTOR DATA				GENERAL DATA				
TAG	SERVICE AREA	MANUF.(*)	MODEL	CONFIG.	CFM	ESP ("WG)	SONES	HP	RPM	DRIVE	VOLTAGE	WEIGHT (LBS)	DIMENSIONS L"xW"xH"	OPENING L"xW"	CONTROL	ACCESSORIES
EF-3	RR	GREENHECK	SP-B70	CEILING	50	.2	1.2	45 WATT	675	DIRECT	120/1/60	9	14X12X7	*	LIGHT INTERLOCK	*
EF-1,2	RR	GREENHECK	SP-B110	CEILING	100	.2	1.5	80 WATT	950	DIRECT	120/1/60	10	14X12X7	*	LIGHT INTERLOCK	*
GH-1	ROOF	GREENHECK	GSRI	CEILING	1280	.2	1.5	-	-	-	-	19	-	18X18	-	*

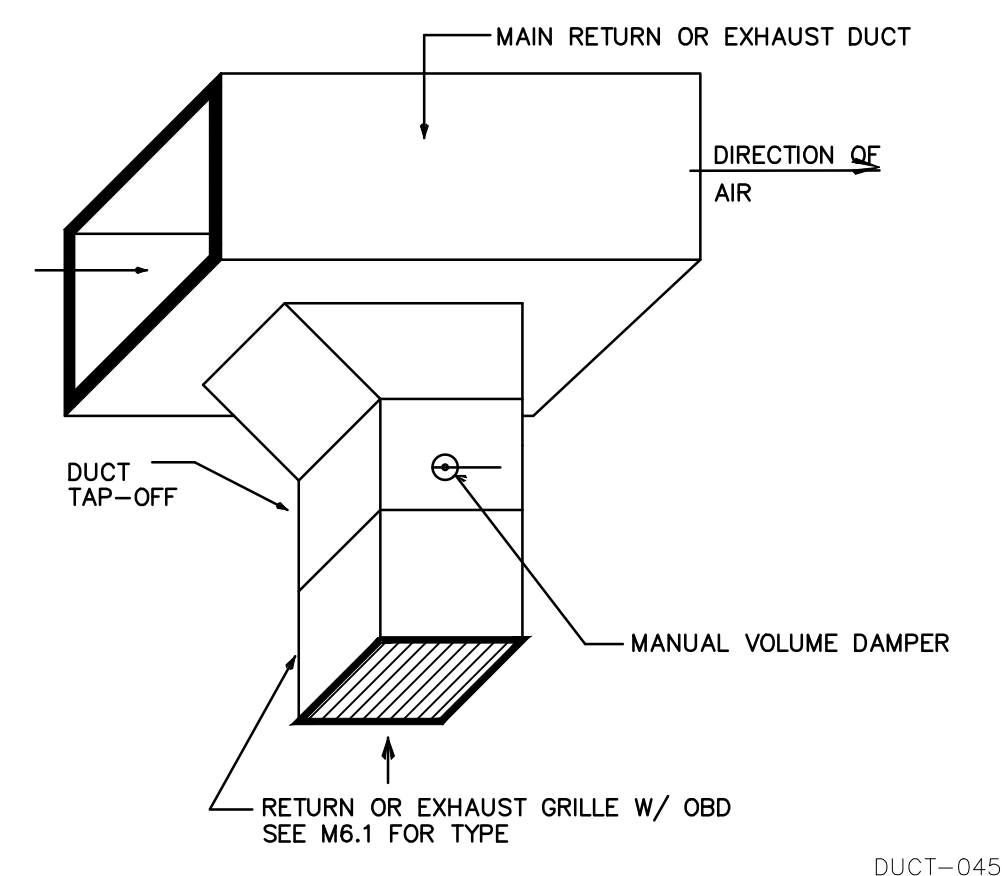
- ACCESSORIES NOTES:**
- PROVIDE GRILLE COLOR PER ARCH. SPECS
 - PROVIDE BACK DRAFT DAMPER
 - LOCATE BACK DRAFT DAMPER AT DISCHARGE
 - PROVIDE FACTORY MOUNTED DISCONNECT SWITCH AND INTEGRAL THERMAL OVERLOAD PROTECTION, COORDINATE WITH ELECTRICAL CONTRACTOR PRIOR TO ANY PURCHASING.
 - PROVIDE BIRD SCREEN
 - SUPPORT FROM STRUCTURE COMPLETE WITH VIBRATION ISOLATORS
 - PROVIDE WEATHERHOOD DRAIN AND CORROSION COATING.
 - PROVIDE WITH MOTORIZED DAMPER.
 - PROVIDE MOTOR SIDE GUARD
 - PROVIDE SPARK RESISTANCE CONSTRUCTION FAN
- GENERAL FAN NOTES:**
- MOTOR STARTERS, DISCONNECTS (IF NOT FACTORY PROVIDED) AND ALL EQUIPMENT NORMAL POWER AND EMERGENCY POWER WIRING BY ELEC. CONTRACTOR
 - ALL CONTINUOUS-DUTY MOTORS SHALL BE PROVIDED WITH OVERLOAD PROTECTION ACCORDING TO NATIONAL ELECTRICAL CODE PAR. 430-32.
 - FIELD ADJUST OPENINGS WITH STRUCTURE.
 - ALL OUTDOOR EQUIPMENT SHALL COMPLY WITH LOCAL ZONING NOISE ORDINANCE OR NOT EXCEED A NOISE LEVEL OF 65dB AS MEASURED RADIALLY 30 FT. FROM THE EQUIPMENT IN ALL DIRECTIONS.
 - COORDINATE WITH ELECTRICAL CONTRACTOR BEFORE BIDDING OR ORDERING ANY EQUIPMENT.
 - SEE PROJECT PLANS AND SPECIFICATIONS FOR OTHER FIELD SUPPLIED ITEMS AND ADDITIONAL INFORMATION.
 - ALL FANS ON ROOF SHALL BE PAINTED AS PER ARCHITECTURAL SPECS.



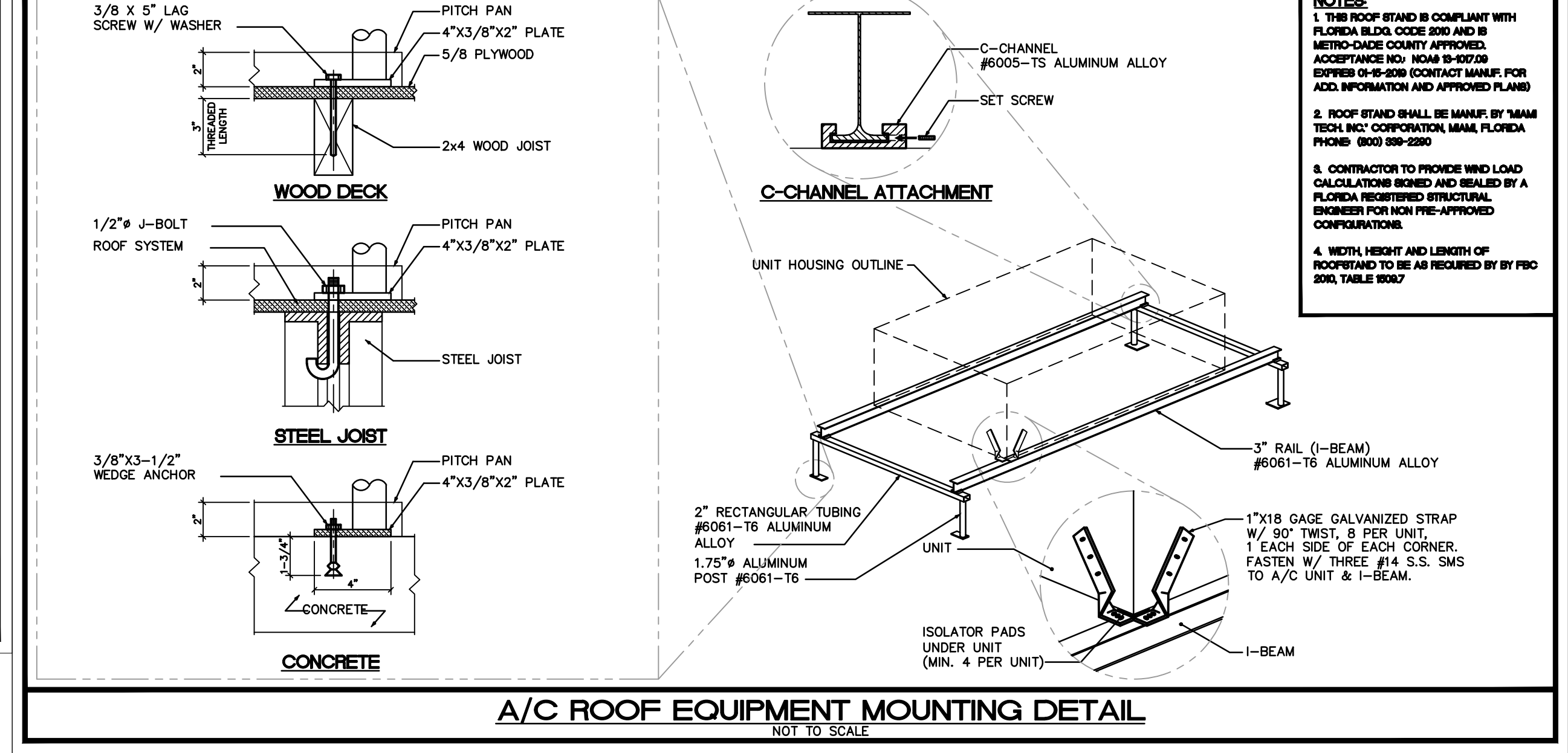
TYPICAL DIFFUSER DETAIL
NOT TO SCALE



HVAC DUCT DETAILS
NOT TO SCALE



RETURN AND EXHAUST DUCT MOUNTED GRILLE DETAIL
NOT TO SCALE



A/C ROOF EQUIPMENT MOUNTING DETAIL
NOT TO SCALE

ISSUED FOR PERMIT ONLY 12-01-16

KAMM CONSULTING PROJECT # 2016-0807
PROJECT MANAGER: JOHN MAYR

1408 Orange Avenue
Fort Pierce, Florida 34950
Phone: 772.595.1744 Fax: 772.595.1745
jmayr@kammconsulting.com
Certification of Authorization #8189

PRINCIPAL: Ready L. Brown Florida License #58232 12-01-16
date: _____
signed: _____

AW
architects

RODOLFO ACEVEDO AIA
JAMES R. WILLIAMS AIA

7700 CONGRESS AVE.
SUITE 1114
BOCA RATON, FLORIDA 33487

TEL: 561.997.1244
FAX: 561.992.1675

JAMES R. WILLIAMS - AR0017581
RODOLFO ACEVEDO - AR0116324

211 E OCEAN AVENUE
BOYNTON BEACH, FL 33435

FLORIDA LICENSE:
AA26002219

PROJECT NO: 15196
DESIGNED BY: JW
DRAWN BY: RC/MACE
CHECKED BY: JW
SUBMITTALS:
PERMIT SET 12-02-2016

REVISIONS:

MECHANICAL SCHEDULES

M6.1