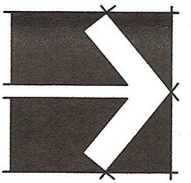
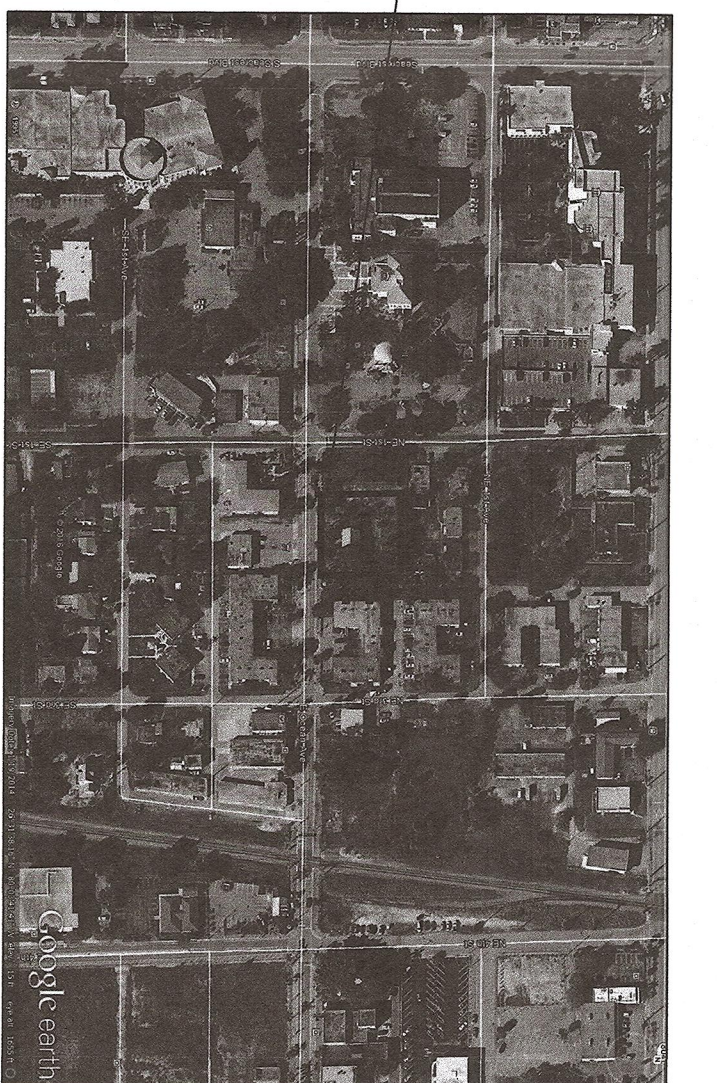


20' ALLEY (P.B. 1/23, P.B.C.R.)

B L O C K 4

SITE



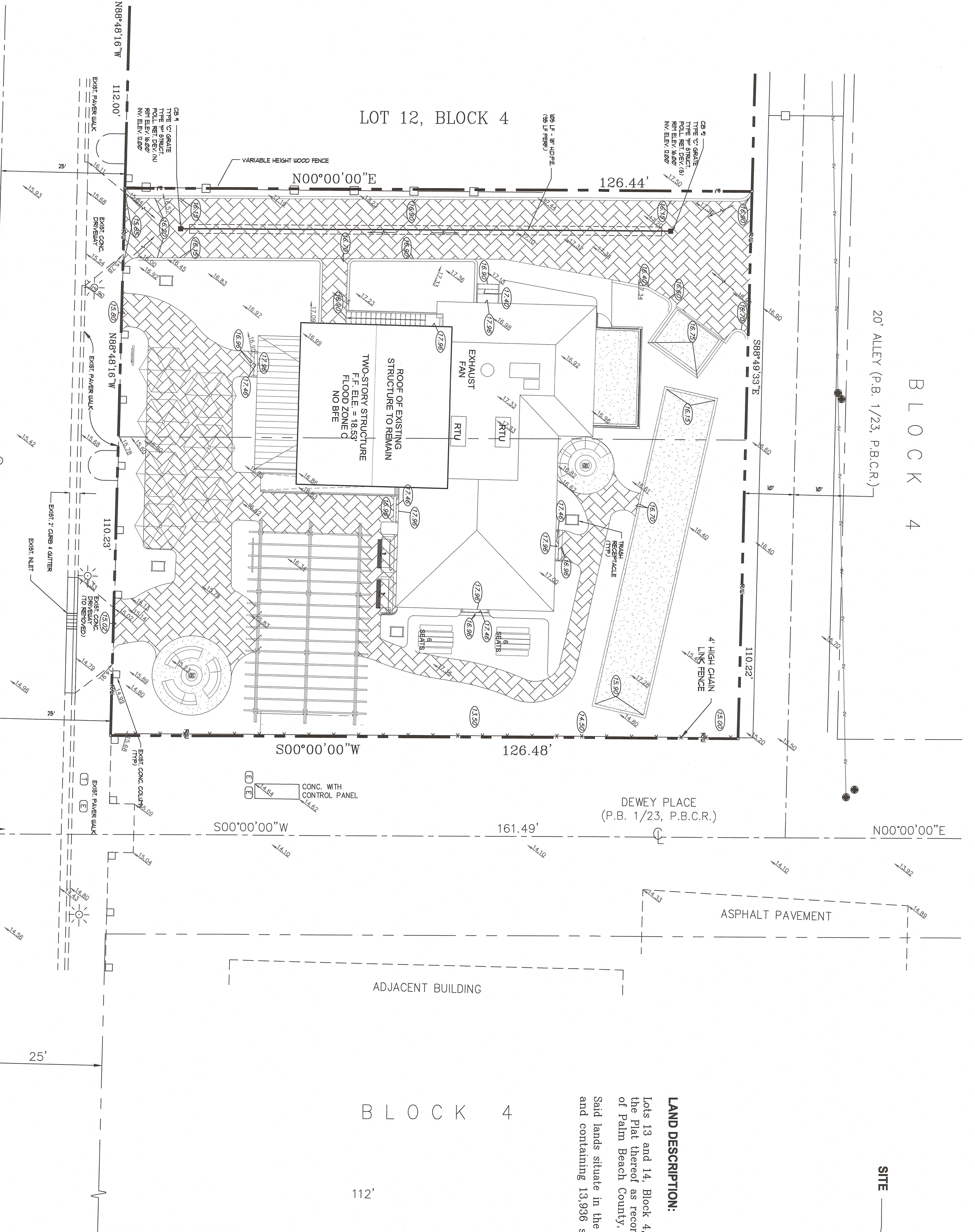
LOCATION SKETCH
N.T.S.

LAND DESCRIPTION:

Lots 13 and 14, Block 4, ORIGINAL TOWN OF BOYNTON BEACH, according to the Plat thereof as recorded in Plat Book 1, Page 23 of the Public Records of Palm Beach County, Florida.
Said lands situate in the City of Boynton Beach, Palm Beach County, Florida and containing 13,936 square feet (0.32 acres) more or less.

LOT 12, BLOCK 4

B L O C K 4



N.E. 3rd STREET

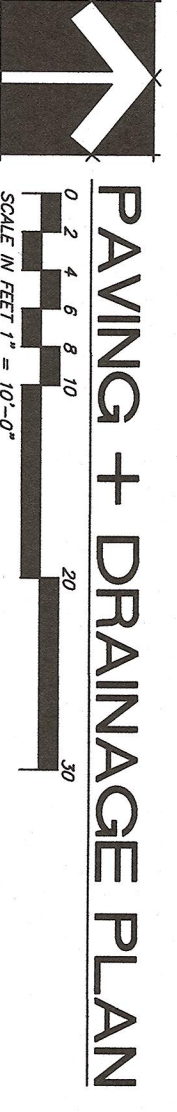
ALM STREET - PER P.B. 1/23, P.B.C.R.)

NOTES:
1. PRIOR TO FIRST INSTALLATION CONTACT THE PUBLIC WORKS DEPARTMENT (361) 424-6200 FOR REMOVAL OF EXISTING UTILITIES AND DETERMINE THE CONSTRUCTION PHASE FOR THE CODE SECTION (2-467A).

- LEGEND**
- EXISTING PAVEMENT
 - PROPOSED PAVEMENT
 - PROPOSED STORM SEWER
 - PROPOSED PERFORATED C/P-F W/DEANFIELD
 - PROPOSED GRADE
 - EXISTING GRADE
 - DIRECTION OF DRAINAGE FLOW
 - PROPOSED CATCH BASIN OR INLET
 - EXISTING CATCH BASIN OR INLET
 - PROPOSED STORM HANDBOLE
 - PROPOSED TYPE "P" CURB & GUTTER
 - EXISTING TYPE "P" CURB & GUTTER
 - EXISTING UTILITY POLE
 - RIGHT-OF-WAY LINE OR PROPERTY LINE
 - PROPOSED ASPHALT PAVEMENT
 - PROPOSED CONCRETE SIDEWALK
 - HDPE HIGH DENSITY POLYETHYLENE PIPE, WATER TIGHT
 - RAIN WATER LEADER
 - THERMOPLASTIC REFLECTORIZED REINFORCED MATERIAL INTERLUMINITY
 - (R/L) REFLECTORIZED MATERIAL INTERLUMINITY
 - C/P-F COMBUSTIBLE METAL PIPE

NOTE:

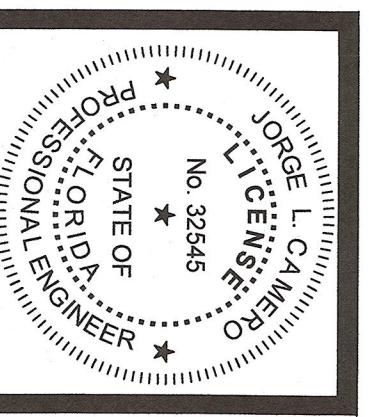
NOT RECOVERED



PAVING + DRAINAGE PLAN

E. OCEAN AVENUE
(50' APPARENT PUBLIC R/W PER P.B. 1/23, P.B.C.R.)

[Handwritten signature]
1-22-10



REVISIONS

211 EAST OCEAN RESTAURANT
211 EAST OCEAN AVENUE
BOYTON BEACH, PALM BEACH COUNTY, FL

CAMERO + ASSOCIATES, INC.
ENGINEERS PLANNERS
1400 SW. 50th TERR. SUITE 204 MIAMI, FL 33155
(305) 665-1602 FAX (305) 665-8488

SCALE: 1"=10'
DATE: 03-20-10
DRAWN BY: FA
CHECKED BY: JLC
PROJECT: 16-115

C-1
OF
C-4