

EXHAUST FAN INFORMATION - Job#2422586

FAN UNIT NO.	TAG	FAN UNIT MODEL #	CFM	ESP.	RPM	H.P.	B.H.P.	Ø	VOLT	FLA	WEIGHT (LBS.)	SONES
1		NCA16FA	2460	1.200	1090	1.500	0.9790	1	208	10.2	157	12.9
2		NCA16FA	2520	1.200	1094	1.500	0.9960	1	208	10.2	157	13

MUA FAN INFORMATION - Job#2422586

FAN UNIT NO.	TAG	FAN UNIT MODEL #	BLOWER	HOUSING	CFM	ESP.	RPM	H.P.	B.H.P.	Ø	VOLT	FLA	WEIGHT (LBS.)	SONES
3		A2-G15	G15-PB	A2	3984	0.750	669	2.000	1.2880	1	208	13.2	370	12

FAN OPTIONS

FAN UNIT NO.	TAG	OPTION (Qty. - Descr.)
1		1 - Grease Box 1 - Miami Dade Certification.
2		1 - Grease Box 1 - Miami Dade Certification.
3		1 - Miami Dade Certification.

FAN ACCESSORIES

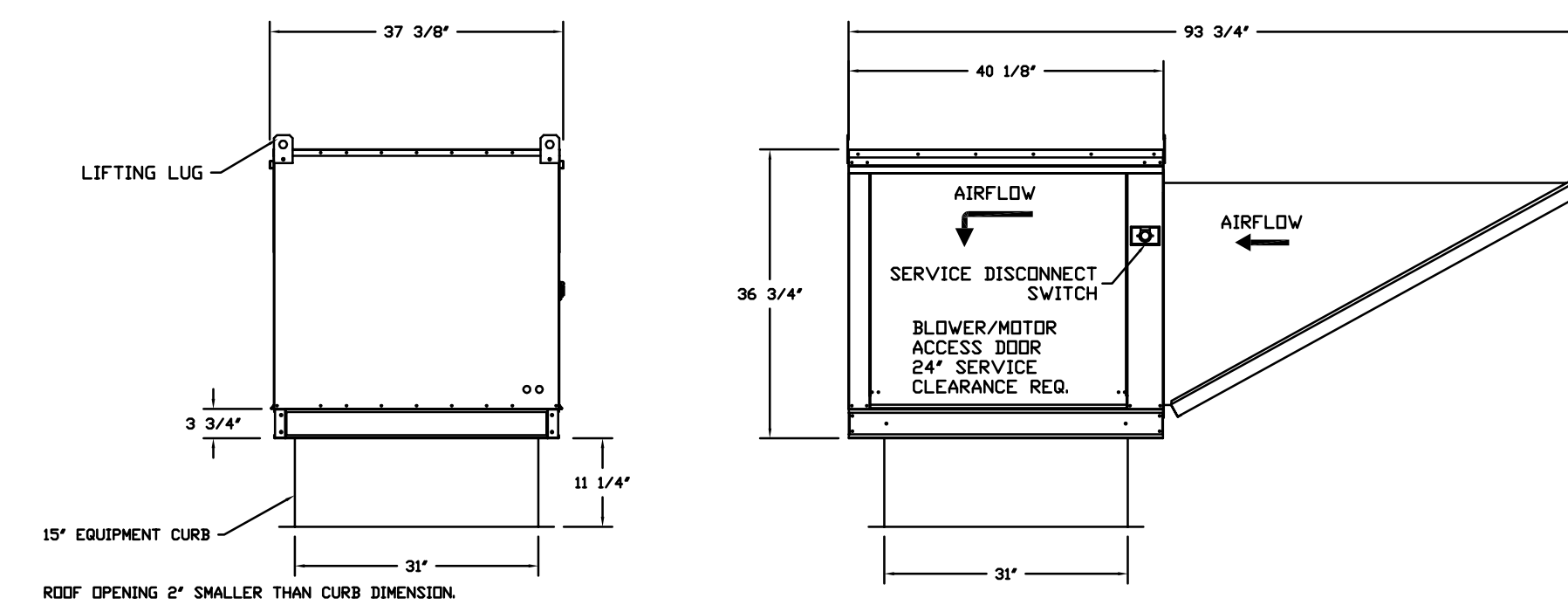
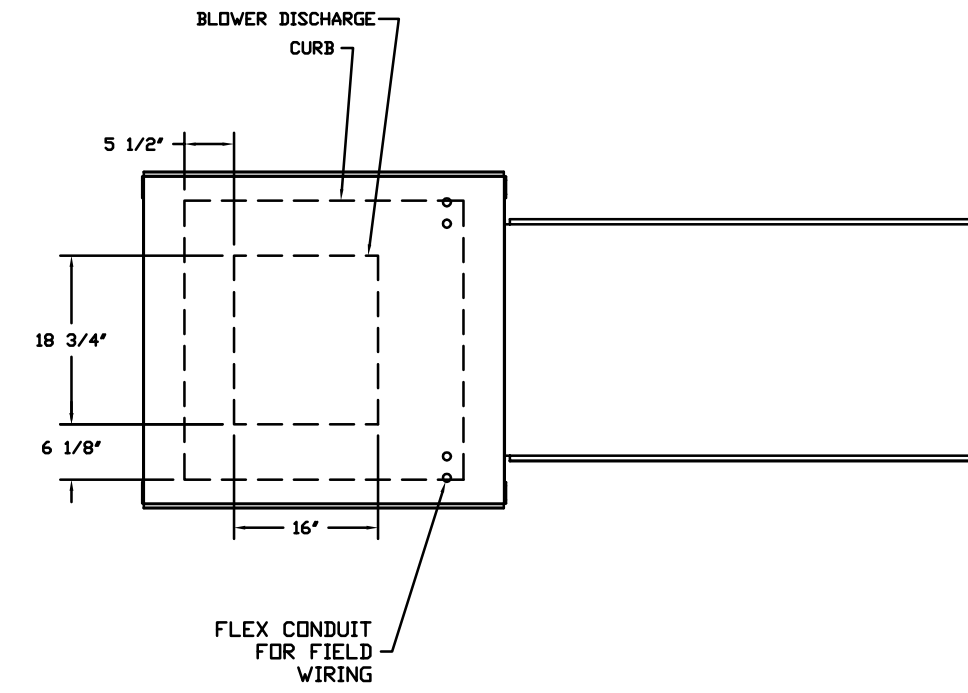
FAN UNIT NO.	TAG	EXHAUST			SUPPLY		
		GREASE CUP	GRAVITY DAMPER	WALL MOUNT	GRAVITY DAMPER	MOTORIZED DAMPER	WALL MOUNT
1		YES					
2		YES					

CURB ASSEMBLIES

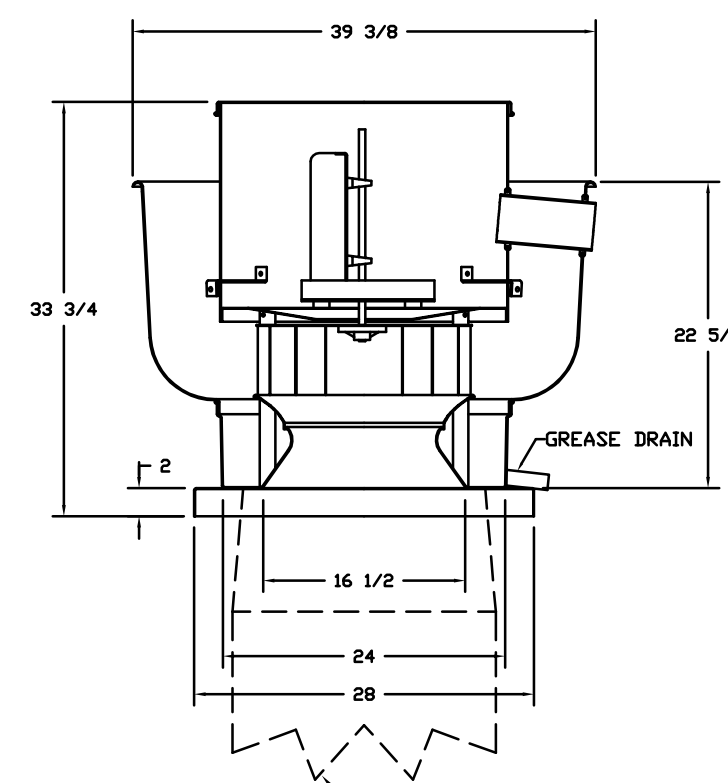
NO.	IN FAN	WEIGHT	ITEM	SIZE
1	# 1	53 LBS	Curb	26.500"W x 26.500"L x 26.000"H 3.000/12.000 Pitch Vented Hinged 16 Gauge
2	# 2	53 LBS	Curb	26.500"W x 26.500"L x 26.000"H 3.000/12.000 Pitch Vented Hinged 16 Gauge
3	# 3	42 LBS	Curb	31.000"W x 31.000"L x 15.000"H 3.000/12.000 Pitch

GENERAL NOTE
DRAWINGS/DETAILS ARE TO BE CONSIDERED DIAGRAMMATIC, NOT NECESSARILY SHOWING IN DETAIL OR TO SCALE ALL MINOR ITEMS, UNLESS SPECIFIC DIMENSIONS ARE SHOWN, THE STRUCTURAL, ARCHITECTURAL AND SITE CONDITIONS SHALL GOVERN EXACT LOCATIONS. CONTRACTOR SHALL FOLLOW DRAWINGS IN LAYING OUT WORK, AND CHECK/COORDINATE DRAWINGS OF ALL TRADES.

FAN #3 A2-G15 - SUPPLY FAN
1. UNTEMPERED SUPPLY UNIT WITH 15" BLOWER IN SIZE #2 HOUSING
2. INTAKE HOOD WITH IZ FILTERS
3. DOWN DISCHARGE - AIR FLOW RIGHT -> LEFT
4. MIAMI DADE IMPACT AND WIND LOAD CERTIFICATION - MIAMI DADE COUNTY PRODUCT CONTROL APPROVED, FLORIDA BUILDING CODE APPROVAL, CURBS UP TO 20" HIGH MUST BE 20 GAUGE ALUMINIZED, CURBS 20" HIGH THROUGH 42" HIGH MUST BE 16 GAUGE ALUMINIZED.



FAN #1, #2 - NCA16FA EXHAUST FAN

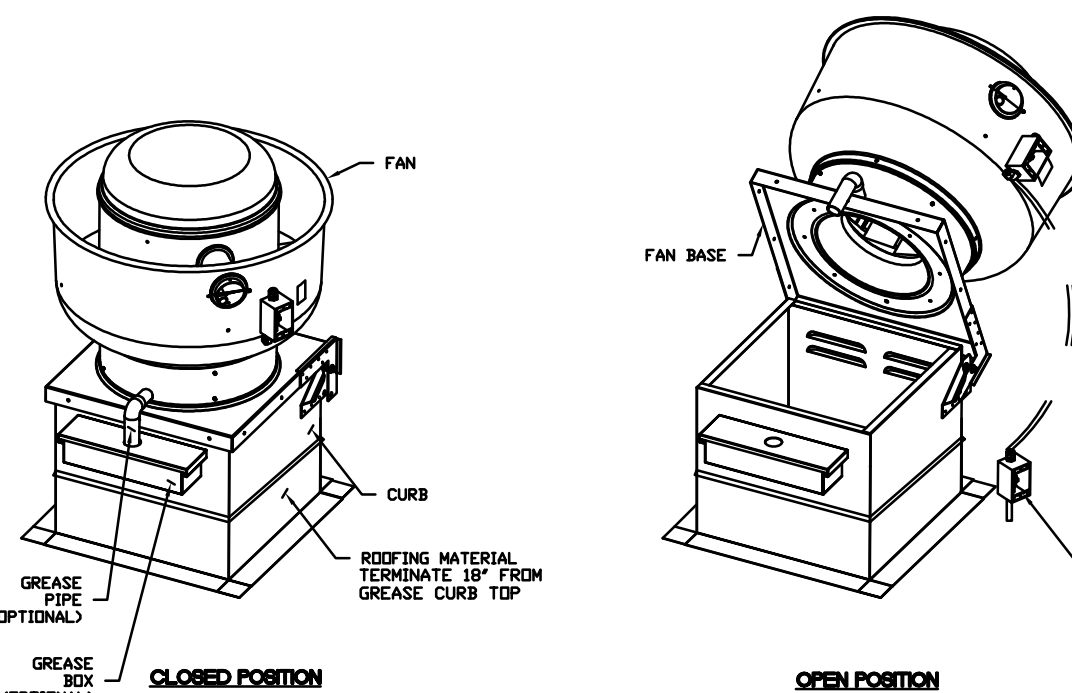
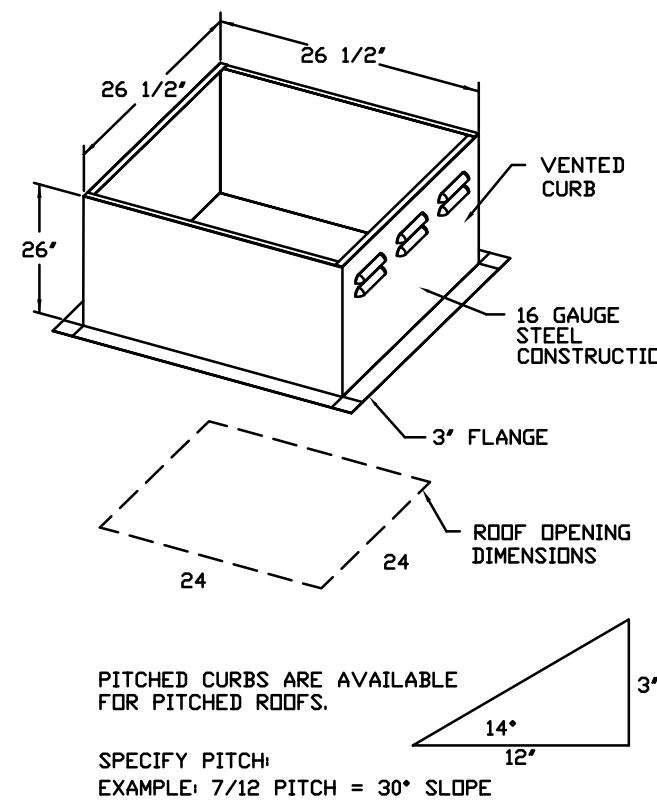


FEATURES:
- ROOF MOUNTED FANS
- RESTAURANT MODEL
- UL705 AND UL752
- AMCA SOUND AND AIR CERTIFIED
- WIRING FROM MOTOR TO DISCONNECT SWITCH
- WEATHERPROOF DISCONNECT
- HIGH HEAT OPERATION 300°F (149°C)
- GREASE CLASSIFICATION TESTING

NORMAL TEMPERATURE TEST
EXHAUST FAN MUST OPERATE CONTINUOUSLY WHILE EXHAUSTING BURNING GREASE VAPORS UNTIL ALL FAN PARTS HAVE REACHED THERMAL EQUILIBRIUM, AND WITHOUT ANY DETRIMENTARY EFFECTS TO THE FAN WHICH WOULD CAUSE UNSAFE OPERATION.

ABNORMAL FLARE-UP TEST
EXHAUST FAN MUST OPERATE CONTINUOUSLY WHILE EXHAUSTING BURNING GREASE VAPORS AT 600°F (316°C) FOR A PERIOD OF 15 MINUTES WITHOUT THE FAN BECOMING DAMAGED TO ANY EXTENT THAT COULD CAUSE AN UNSAFE CONDITION.

OPTIONS
GREASE BOX
MIAMI DADE CERTIFICATION.



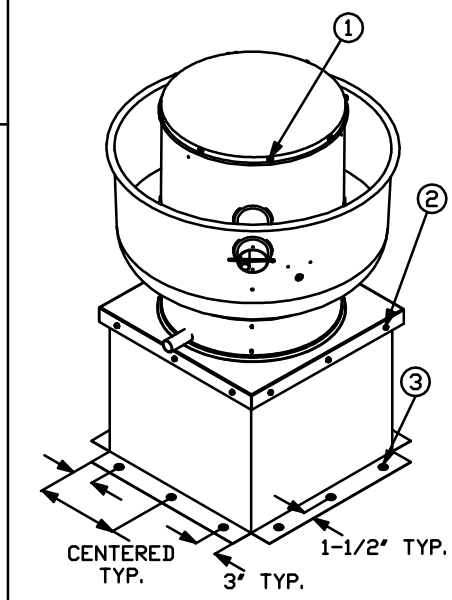
HINGE KIT DETAIL GREASE EXHAUST FAN

ELECTRICIAN SHALL SUPPLY ENOUGH ELECTRICAL CORD TO LET FAN MAKE COMPLETE SWING
ELECTRICAL CONNECTION TO FAN DISCONNECT SHALL BE MADE OUTSIDE OF GREASE CURB AND DUCT

Miami-Dade - Upblast Aluminum - NOA1

Installation Instructions:

- Secure the lid to the fan using (8) 1/4" - 14 x 1" zinc plated steel self drilling screws with rubber washers, spaced evenly around the lid.
- Secure the fan base to the curb using a minimum of (12) 1/4" - 14 x 2" zinc plated steel self drilling screws, through pre-punched holes in the fan base with a max spacing of 16 inches.
- Secure the curb to the roof framing members by drilling 1/4" pilot holes in the curb flanges at locations shown in the diagram and using a minimum of (12) 3/8" x 2" (minimum embedment), zinc plated steel lag bolts and zinc plated washers, screw through curb flanges and into roof framing members with a maximum spacing 21 1/4".



Miami-Dade NOA1

General Notes:

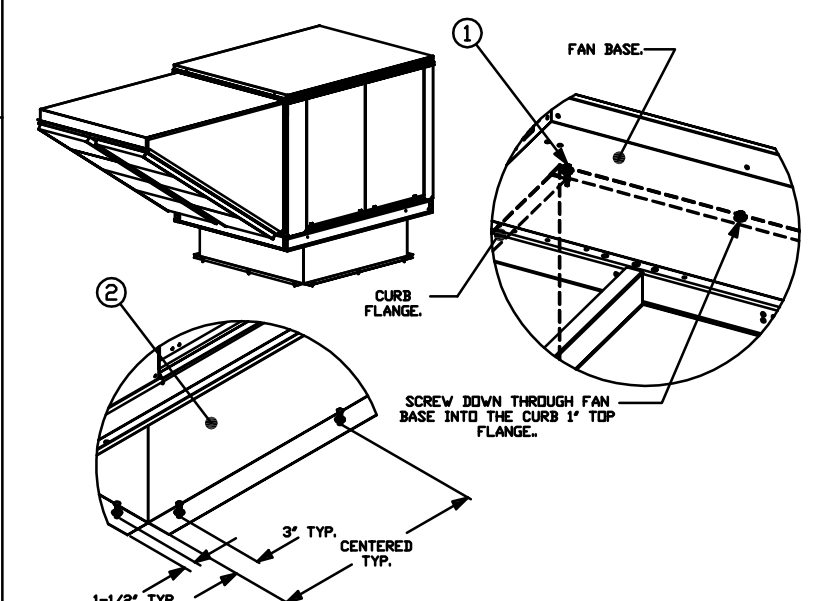
- This approval is for the structural capacity and impact rating of the exterior housing only; it does not include any interior mechanism or electrical part.
- These fans have not been wind tested for Wind Driven Rain Test per Florida Building Code, TAS100 (A)-95.
- Tested in accordance to Florida Building Code test protocol TAS201, TAS202, TAS203.
- Tested for areas including high velocity hurricane zones.
- Tested under Miami-Dade County Notification number ATI-08033.

**DESIGN PRESSURE: +30.0 / -66.0 PSF
LARGE MISSILE IMPACT RESISTANT**

Miami-Dade - Steel Supply Fan - NOA2

Installation Instructions:

- Secure the fan base to the top of the curb using a minimum of (12) 1/4"-14 x 1" self drilling screws (steel zinc plated) with a minimum spacing of 30" inches, secure through the fan base and into the curb.
- Secure the curb to the roof framing members by drilling 1/4" pilot holes in the curb flanges at locations shown in the diagram and using a minimum of (12) 3/8" x 2" (minimum embedment), zinc plated steel lag bolts and zinc plated washers, screw through curb flanges and into roof framing members with a maximum spacing 30".



Miami-Dade NOA2

General Notes:

- This approval is for the structural capacity and impact rating of the exterior housing only; it does not include any interior mechanism or electrical part.
- These fans have not been wind tested for Wind Driven Rain Test per Florida Building Code, TAS100 (A)-95.
- Tested in accordance to Florida Building Code test protocol TAS201, TAS202, TAS203.
- Tested for areas including high velocity hurricane zones.
- Tested under Miami-Dade County Notification number ATI-08034.

**DESIGN PRESSURE: +30.0 / -130.0 PSF
LARGE MISSILE IMPACT RESISTANT**

VENTILATION EQPT AND MOTOR DETAIL
NTS

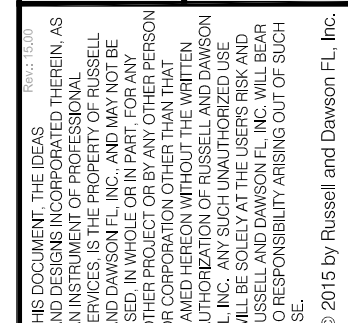
SHEET 2 OF 7



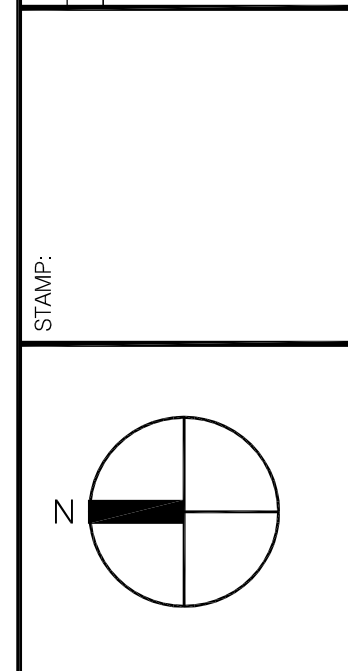
FOR QUESTIONS:
PLEASE CONTACT THE
CAPTIVE AIR SOUTH FLORIDA OFFICE
6601 LYONS RD. F-4, COCONUT CREEK, FL 33073
PHONE: (954) 578-8595, (800) 477-0454
REG63RCAPTIVEAIRE.COM

BUCHANAN P.E CONSULTING INC.
ELECTRICAL * MECHANICAL * PLUMBING
ENGINEERING
6191 W. ATLANTIC BLVD, SUITE 2 MARGATE, FL 33063
PH: 954-590-3300 FAX: 954-590-2232
EMAIL: BUCHANAN@PEENGINEERS.COM
CERTIFICATE OF AUTHORIZATION # 8842
ORAJA BUCHANAN P.E # 48916 MAURICE LORD P.E # 72550

JOB	NHAC BROWARD KITCHEN
LOCATION	1700 BLOUNT RD, POMPANO BCH, FL
DATE	9/2/2016
DWG #	NHAC
REV.	
JOB #	2422586
DRAWN BY	TMH
SCALE	NTS



NO.	REVISIONS	DATE	BY
1	DESCRIPTION	03/29/16	
2	BUILDING DEPT. COMMENTS		
3	KITCHEN REDESIGN	08/26/16	



PROJECT: KITCHEN RENOVATION TO NORTH HOMELESS ASSISTANCE CENTER
BROWARD COUNTY
1700 BLOUNT ROAD, POMPANO BEACH, FL

FILE NO.:	15.012
DATE:	07/29/15
DRAWN BY:	SBUP/DORT
CHECKED BY:	GSJ

SHEET TITLE: KITCHEN HOOD PAN
SHEET NUMBER: M-103.1