

Fire System Information - Job#2422586

FIRE SYSTEM NO.	Tag	TYPE	SIZE	FLOW POINTS	INSTALLATION	
					SYSTEM	LOCATION ON HOOD
1		Ansul R102	3.0/3.0	22	Wall Mount Left	N/A

INCLUDES: FIELD INSTALLATION AND HOOKUP DURING NORMAL BUSINESS HOURS BY CERTIFIED INSTALLERS ONLY IN THE LOCATION NOTED ABOVE. TWO SITE VISITS ONLY ONE VISIT TO SET PULL STATION & SYSTEM HOOKUP AND ONE VISIT FOR ONE TEST. ADDITIONAL VISITS WILL RESULT IN ADDITIONAL CHARGES. ONE MECHANICAL GAS VALVE PER SYSTEM AT A MAXIMUM SIZE OF 2" PERMIT, AND SYSTEM TEST.
EXCLUDES: UNION LABOR & PREVAILING WAGE (LABOR & WAGES WILL BE ADDED IF APPLICABLE), GAS VALVE INSTALLATION, ELECTRICAL HOOKUP AND CONNECTIONS, HANGING OF FIRE CABINET, SHUNT TRIP, HANDHELD EXTINGUISHER(S), ON-SITE RE-PIPING DUE TO EQUIPMENT LAYOUT CHANGES.

NOTES

- FIELD PIPE DROPS AS SHOWN
- SLEEVING, ELBOWS, TEES, AND NOZZLES SUPPLIED BY CAS
- RELOCATE NOZZLES IF FLOW PATTERN IS BLOCKED BY SHELVING, SALAMANDERS, ETC.
- MAXIMUM 9 ELBOWS IN SUPPLY LINE.
- MINIMUM 7/8 INCHES OF AGENT LINE FROM TANK TO FIRST NOZZLE.
- IF APPLICABLE, PRE-PIPED CHARBROILER DROPS ARE SHIPPED LOOSE.
- FACTORY PIPING EXTENDS A MAXIMUM OF 6" ABOVE THE TOP OF THE HOOD.

- APPLIANCE DIMENSIONS LISTED REPRESENT THE COOKING SURFACE SIZE, NOT THE OVERALL APPLIANCE SIZE.
- THIS FIRE SYSTEM COMPLIES WITH UL 300 REQUIREMENTS

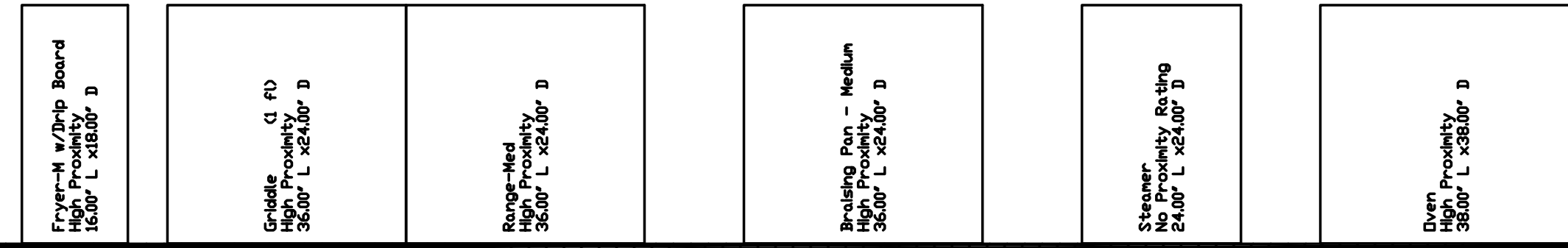
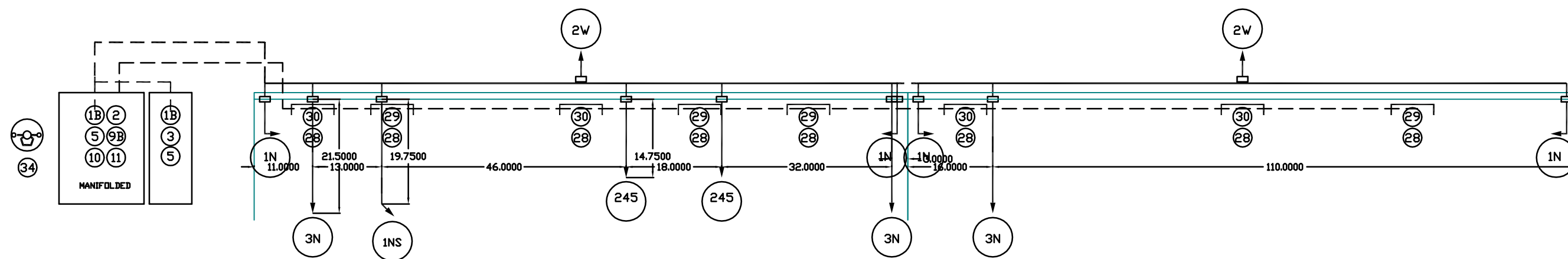
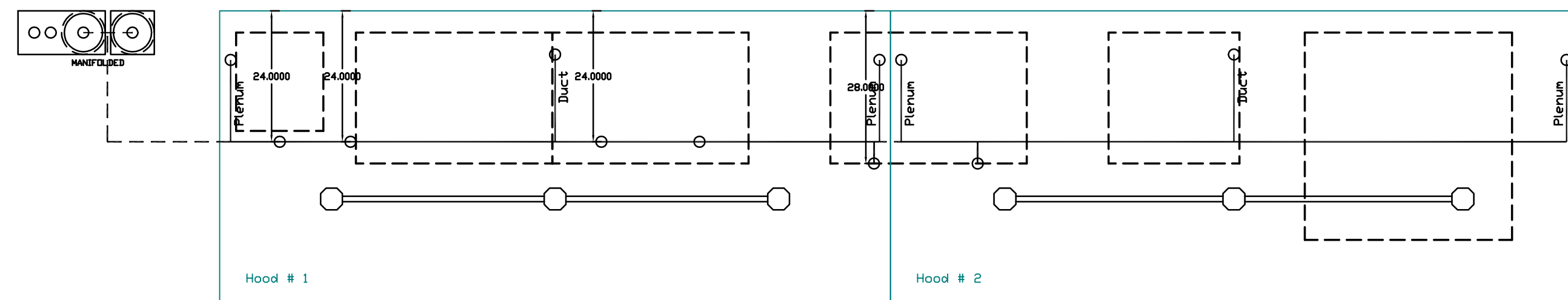
SPECIFICATIONS

THE RESTAURANT FIRE SUPPRESSION SYSTEM SHALL BE THE PRE-ENGINEERED TYPE WITH A FIXED NOZZLE AGENT DISTRIBUTION NETWORK. IT SHALL BE LISTED WITH UNDERWRITERS LABORATORIES, INC. (UL)

THE SYSTEM SHALL BE CAPABLE OF AUTOMATIC DETECTION AND ACTUATION WITH LOCAL OR REMOTE MANUAL ACTUATION. ACCESSORIES SHALL BE AVAILABLE FOR MECHANICAL OR ELECTRICAL GAS LINE SHUT-OFF APPLICATIONS.

THE EXTINGUISHING AGENT SHALL BE A POTASSIUM CARBONATE, POTASSIUM ACETATE-BASED FORMULATION DESIGNED FOR FLAME KNOCKDOWN AND SECUREMENT OF GREASE-RELATED FIRES. IT SHALL BE AVAILABLE IN PLASTIC CONTAINERS WITH INSTRUCTIONS FOR LIQUID AGENT HANDLING AND USAGE.

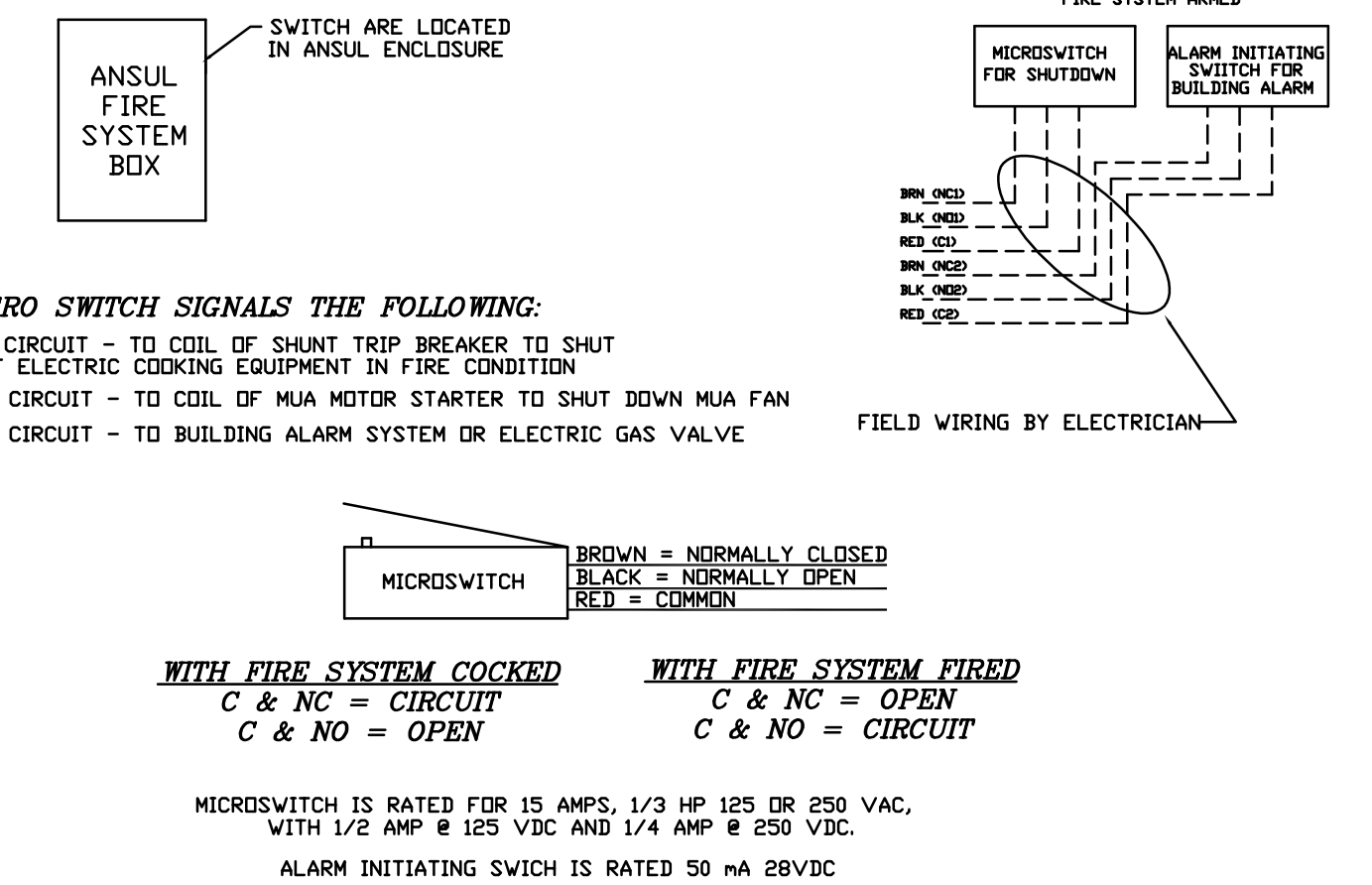
THE REGULATED RELEASE MECHANISM SHALL BE COMPATIBLE WITH A FUSIBLE LINK DETECTION SYSTEM. THE FUSIBLE LINK SHALL BE SELECTED AND INSTALLED ACCORDING TO THE OPERATING TEMPERATURE IN THE VENTILATING SYSTEM. THE FUSIBLE LINK SHALL BE SUPPORTED BY A DETECTOR BRACKET/LINKAGE ASSEMBLY.



KITCHEN HOOD SHALL OVERHANG COOKING EQPT BY A MINIMUM OF 6" ON ALL OPEN SIDES

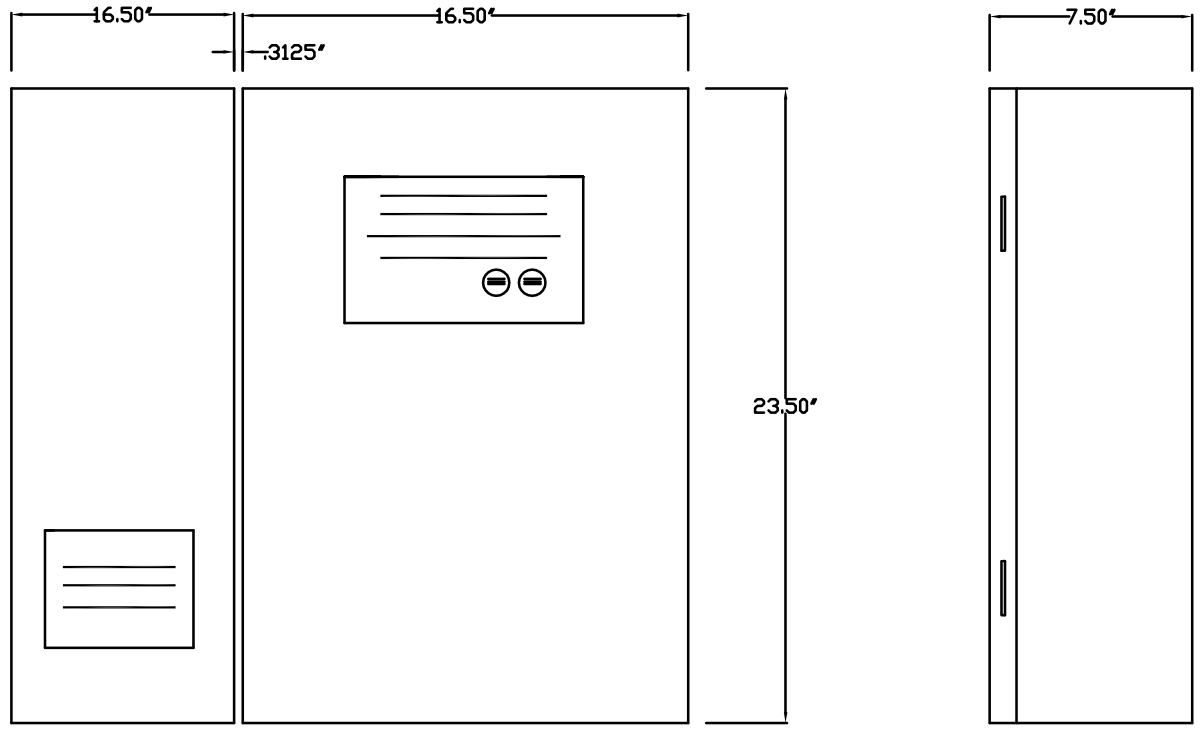
NOTE: UL 300 FIRE SYSTEM COOKING EQUIPMENT - FIRE SUPPRESSION DETAIL UNDER SEPARATE PERMIT FOR REFERENCE ONLY - COOKING EQPT AND FIRE SUPPRESSION BY OTHERS

FIRE SYSTEM MICROSWITCHES

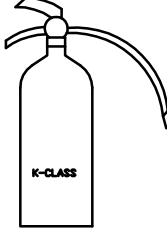


- MICRO SWITCH SIGNALS THE FOLLOWING:**
- NO CIRCUIT - TO COIL OF SHUNT TRIP BREAKER TO SHUT OFF ELECTRIC COOKING EQUIPMENT IN FIRE CONDITION
 - NC CIRCUIT - TO COIL OF MUA MOTOR STARTER TO SHUT DOWN MUA FAN
 - 3N CIRCUIT - TO BUILDING ALARM SYSTEM OR ELECTRIC GAS VALVE
- FIELD WIRING BY ELECTRICIAN
- MICROSWITCH**
BROWN = NORMALLY CLOSED
BLACK = NORMALLY OPEN
RED = COMMON
- WITH FIRE SYSTEM COCKED**
C & NC = CIRCUIT
C & NO = OPEN
- WITH FIRE SYSTEM FIRED**
C & NC = OPEN
C & NO = CIRCUIT
- MICROSWITCH IS RATED FOR 15 AMPS, 1/3 HP 125 OR 250 VAC, WITH 1/2 AMP @ 125 VDC AND 1/4 AMP @ 250 VDC.
ALARM INITIATING SWITCH IS RATED 50 mA 28VDC

WALL MOUNTED ANSUL CABINET DETAIL



TOP OF CABINET TO BE INSTALLED AT FINISHED CEILINGES



K-CLASS EXTINGUISHER MAXIMUM 30 FEET FROM HOOD

NOTES

- FIELD PIPE DROPS AS SHOWN
- SLEEVING, ELBOWS, TEES, AND NOZZLES SUPPLIED BY CAS
- RELOCATE NOZZLES IF FLOW PATTERN IS BLOCKED BY SHELVING, SALAMANDERS, ETC.
- MAXIMUM 9 ELBOWS IN SUPPLY LINE.
- MINIMUM 7/8 INCHES OF AGENT LINE FROM TANK TO FIRST NOZZLE.
- IF APPLICABLE, PRE-PIPED CHARBROILER DROPS ARE SHIPPED LOOSE.
- FACTORY PIPING EXTENDS A MAXIMUM OF 6" ABOVE THE TOP OF THE HOOD.
- APPLIANCE DIMENSIONS LISTED REPRESENT THE COOKING SURFACE SIZE, NOT THE OVERALL APPLIANCE SIZE.
- THIS FIRE SYSTEM COMPLIES WITH UL 300 REQUIREMENTS

ALL PIPING FOR CHEMICAL SUPPLYLINES TO BE 3/8" SCHEDULE 40 BLACK IRON

Job #: 2422586
Job Name: NHAC BRDWARD KITCHEN
Drawn By:
System Size: ANSUL-3.0/3.0-MANIFOLD Total FP required: 22
Hood # 1 10' 3.00' Long x 54" Wide x 12" High
Riser # 1 Size: 10" x 23"
Hood # 2 10' 6.00' Long x 54" Wide x 12" High
Riser # 1 Size: 10" x 24"
Hood # 2 Metal Blow-Off Caps included.

GENERAL NOTES :

- FIRE SUPPRESSION SYSTEM IS UL 300 LISTED. FIRE SYSTEM COMPLIES WITH NFPA 96 AND NFPA 17A.
- STAINLESS STEEL CABLE (1/16") ENCLOSED IN 1/2" CONDUIT. ALL PIPE TO BE 3/8" BLACK IRON UNLESS OTHERWISE NOTED.
- MICRO SWITCH PROVIDED FOR ELECTRICAL INTERFACE. UPON SYSTEM DISCHARGE THE FOLLOWING MUST OCCUR: EXHAUST AIR CONTINUES TO RUN, SUPPLY AIR SHUTS DOWN, ALARM (IF AVAILABLE) OR HORN STROBE MUST ANNUNCIATE. ALL GAS AND ELECTRIC SUPPLY TO ALL APPLIANCES AND OUTLETS WITHIN HAZARD MUST SHUT DOWN.
- REMOTE MANUAL PULL STATION LOCATED BETWEEN 10' AND 20' FROM HAZARD AND ALONG EGRESS AT 48" ABOVE FINISHED FLOOR.
- ALL SYSTEM PARTS TO BE APPROVED MANUFACTURER'S COMPONENTS. SYSTEM INSTALLED IN COMPLIANCE WITH MANUFACTURER UL LISTING.
- AUTOMATIC GAS VALVE TO LOCATED IN A SERVICABLE POSITION NOT IN HAZARD, IN CEILING OR BEHIND OR UNDER EQUIPMENT.
- APPLIANCE DIMENSIONS REPRESENT ACTUAL COOKING SURFACE.
- REQUIRED CLASS "K" EXTINGUISHER WITH PROPER PLACARD TO BE LOCATED WITHIN 30 FEET OF HAZARD, NEAR REMOTE PULL.
- FUNCTION TEST ONLY REQUIRED FOR FINAL INSPECTION.

GENERAL NOTE

DRAWINGS/DETAILS ARE TO BE CONSIDERED DIAGRAMMATIC, NOT NECESSARILY SHOWING IN DETAIL OR TO SCALE ALL MINOR ITEMS. UNLESS SPECIFIC DIMENSIONS ARE SHOWN, THE STRUCTURAL, ARCHITECTURAL AND SITE CONDITIONS SHALL GOVERN EXACT LOCATIONS. CONTRACTOR SHALL FOLLOW DRAWINGS IN LAYING OUT WORK, AND CHECK/COORDINATE DRAWINGS OF ALL TRADES.



NFPA #96 NSF UL 710 & UL710 STANDARDS E.T.L. LISTED 3054804-001

FOR QUESTIONS:
PLEASE CONTACT THE CAPTIVE AIRE SOUTH FLORIDA OFFICE
6601 LYONS RD. F-4, COCONUT CREEK, FL 33073
PHONE: (954) 578-8595, (800) 477-0454
REG63@CAPTIVEAIRE.COM

BUCHANAN P.E CONSULTING INC.
ELECTRICAL * MECHANICAL * PLUMBING ENGINEERING
6191 W. ATLANTIC BLVD, SUITE# 2 MARGATE, FL 33063
Ph: 954-590-3300 Fax: 954-590-2232
Email: BUCHANAN@PEENGINEERS.COM
CERTIFICATE OF AUTHORIZATION # 8842
CRAJA BUCHANAN P.E # 48916 MAURICE LORD P.E # 72550



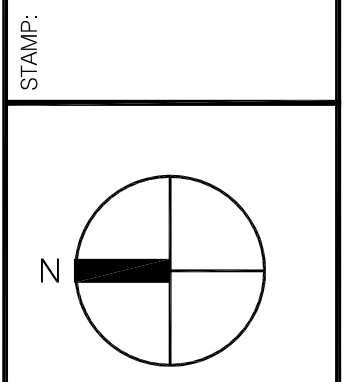
JOB: NHAC BRDWARD KITCHEN
LOCATION: 1700 BLOUNT RD, POMPANO BCH, FL
DATE: 9/2/2016 JOB #: 2422586
DWG #: NHAC DRAWN BY: TMH
REV: SCALE: NTS

SHEET 4 OF 7



WE CAN SAVE THE EARTH AND DESIGN UNFORGETTABLE SPACES TO THE PROJECT OF RESILIENT SERVICES TO THE PEOPLE OF FLORIDA. USED IN FULL OR PART FOR ANY OTHER PROJECT WITHOUT THE WRITTEN CONSENT OF SINGER ARCHITECTS AND ENGINEERS, P.A. WILL BE SOLELY AT THE USER'S RISK. THE RESPONSIBILITY FOR THE ACCURACY OF THIS INFORMATION RESTS WITH THE USER.

NO.	REVISIONS	DESCRIPTION	DATE	BY
1	REVISIONS	BUILDING DEPT. COMMENTS	03/29/16	
2	REVISIONS	KITCHEN REVISION	08/26/16	



PROJECT: KITCHEN RENOVATION TO NORTH HOMELESS ASSISTANCE CENTER
BROWARD COUNTY
1700 BLOUNT ROAD, POMPANO BEACH, FL

FILE NO.:	15.012
DATE:	07/23/15
DRAWN BY:	SBUP/DVRT
CHECKED BY:	GSJ

SHEET TITLE: KITCHEN HOOD PAN

SHEET NUMBER: M-103.3