

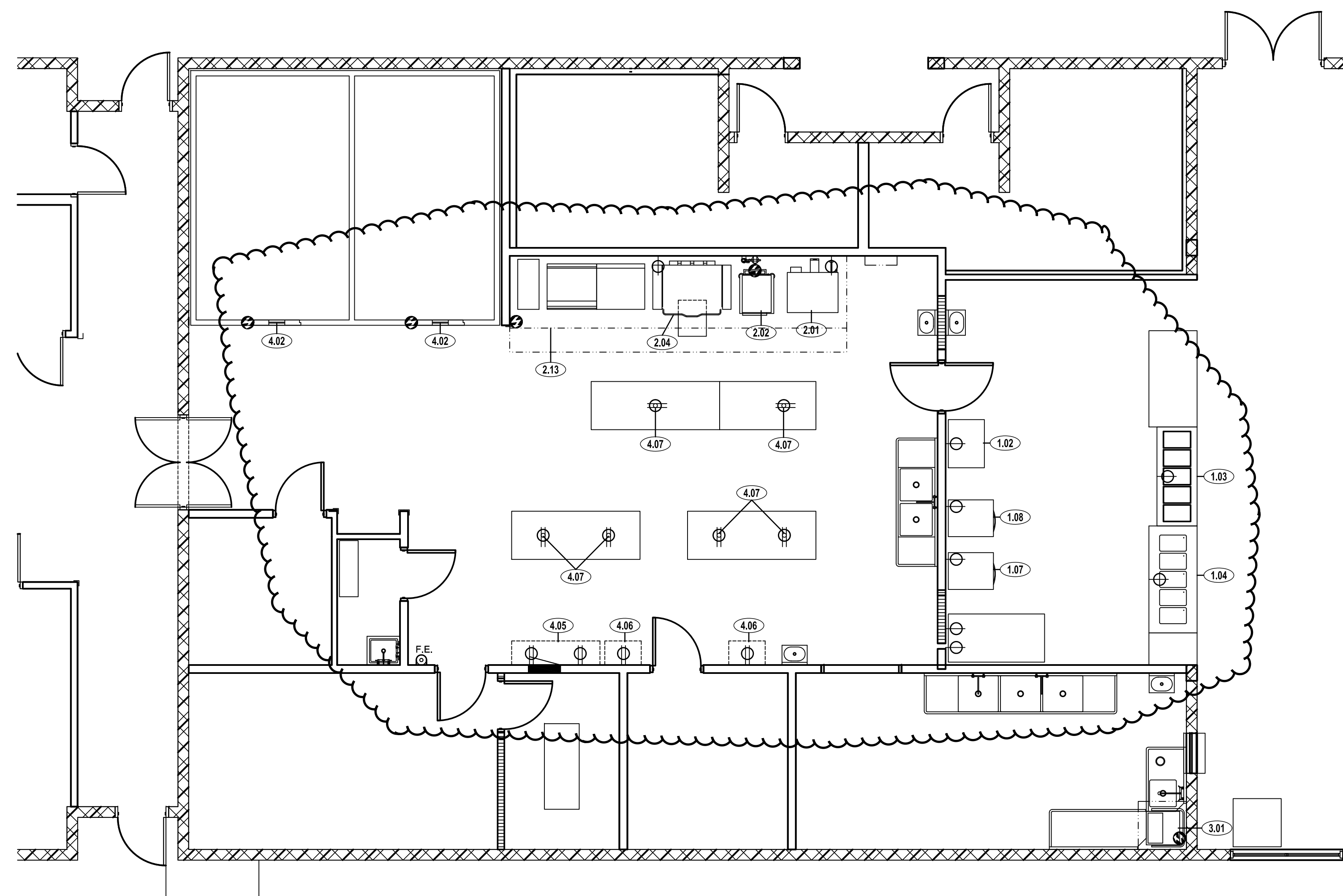
**ELECTRICAL NOTES**

WORK DESCRIBED IN THESE NOTES IS TO BE PERFORMED UNDER DIVISION 26 (ELECTRICAL).

- THIS DRAWING LOCATES FINAL ELECTRICAL POINTS OF CONNECTION FOR EACH FOODSERVICE EQUIPMENT ITEM. IT DOES NOT INDICATE UTILITY ROUGH-IN LOCATIONS AND MUST NOT BE USED FOR THAT PURPOSE. LOCATIONS, SIZES, AND HEIGHTS ABOVE THE FLOOR ARE APPROXIMATELY AS THEY WILL OCCUR ON THE EQUIPMENT ITEMS SHOWN. THE DESIGN OF SYSTEMS TO ACCOMMODATE THESE REQUIREMENTS IS TO BE IN ACCORDANCE WITH ALL APPLICABLE CODES AND MEET WITH THE APPROVAL OF ALL GOVERNING AUTHORITIES.
- UTILITIES SHOWN ARE FOR FOODSERVICE EQUIPMENT ITEMS ONLY. THIS DRAWING MUST BE USED IN CONJUNCTION WITH THE ELECTRICAL DRAWINGS FOR OTHER REQUIRED UTILITIES.
- CONCEAL ALL UTILITIES IN WALLS AND STUB-OUT OF WALLS AS REQUIRED FOR CONNECTIONS. DO NOT RUN EXPOSED ON THE FACE OF THE WALL. DO NOT STUB-OUT OF THE FLOOR UNLESS IT IS BELOW FREESTANDING EQUIPMENT.
- EXPOSED CONDUIT ABOVE WORK SURFACES TO BE STAINLESS STEEL. EXPOSED CONDUIT BELOW WORK SURFACES TO BE CHROME PAINTED.
- POWER TO ALL ELECTRICALLY OPERATED EQUIPMENT UNDER HOODS IS TO COME FROM THE PANEL WHERE THE MAIN BREAKER IS INTERWIRED WITH THE FIRE EXTINGUISHING SYSTEM SO THAT POWER SHUT-OFF IS ACHIEVED UPON EITHER MANUAL OR AUTOMATIC OPERATION OF THE FIRE EXTINGUISHING SYSTEM.
- PROVIDE A FLUSH, EMPTY JUNCTION BOX AT EACH REMOTE FIRE CABLE PULL. PROVIDE CONDUIT CONCEALED IN WALL FROM JUNCTION BOX TO A POINT 6"(155mm) ABOVE FINISHED CEILING.
- PROVIDE CONDUIT AND WIRING BETWEEN THE FUEL LINE SOLENOID SHUT-OFF VALVES, SHUNT TRIP BREAKERS, CONTACTORS, REMOTE NOTIFICATION AND FIRE EXTINGUISHING SYSTEMS.
- NOT USED.
- NOT USED.
- NOT USED.
- A MECHANICAL GAS SHUT OFF VALVE OR ELECTRICAL SOLENOID SHUT OFF VALVE WITH MOMENTARY POWER INTERRUPTION DEVICE SHALL BE PROVIDED LOOSE BY KEC FOR FIELD INSTALLATION IN SUPPLY LINE FOR GAS FUELED EQUIPMENT ITEMS.
- PROVIDE DUPLEX CONVENIENCE OUTLET (120/1Ø, 20A) AT HEIGHT INDICATED.
- COORDINATE THE INTERWIRE OF ALL SPECIFIED TEMPERATURE ALARM SYSTEMS TO BUILDING SYSTEM.
- VENTILATORS SHALL INCLUDE THERMOSTAT(S) INSTALLED IN THE CANOPY TO AUTOMATICALLY START THE EXHAUST FAN(S) WHEN COOKING OCCURS TO MEET IMC 2006 SECTION 507.2.1.1.
- ELECTRICAL PANELS TO BE LOCATED WITHIN LINE OF SIGHT OF EQUIPMENT SERVED BY PANELS AND NOT FURTHER AWAY FROM EQUIPMENT THAN LOCAL CODE REQUIREMENTS ALLOW.

ELECTRICAL ABBREVIATIONS AND SYMBOLS	
SWITCH	SW (S)
ELECTRICAL CONNECTION	EC (E)
JUNCTION BOX	JB (J)
SINGLE RECEPTACLE	SR (S)
DUPLEX RECEPTACLE	DR (D)
DATA COMMUNICATIONS	DC (D)
EMPTY JUNCTION BOX	(E)
AMP	A
KILOWATT	KW
HORSEPOWER	HP
VOLT	V
PHASE	Ø
ABOVE FINISHED FLOOR	AFF
DOWN FROM ABOVE	DFA

FIRE EXTINGUISHING SYSTEM NOTES	
(FA)	WIRING IN CONDUIT BY ELECTRICAL TRADE BETWEEN RESET RELAY, AUTOMAN RELEASE AND ELECTRICAL GAS SOLENOID SHUT-OFF VALVE
(FB)	WIRING IN CONDUIT BY ELECTRICAL TRADE TO SHUNT-TRIP BREAKER LOCATED IN POWER PANEL SUPPLYING EQUIPMENT BENEATH VENTILATOR AND/OR BETWEEN RESET RELAY AND CONTACTORS SERVING EQUIPMENT BENEATH VENTILATOR
(FC)	WIRING IN CONDUIT BY ELECTRICAL TRADE BETWEEN MICROSWITCH AND BUILDING FIRE ALARM SYSTEM AS REQUIRED
(FD)	FLUSH-MOUNT OCTAGONAL J-BOX (8B TYPE) MOUNTED AT 48" (1200mm) TO 54" (1350mm) AFF WITH 1/2" (15mm) EMT TO 6" (150mm) ABOVE CEILING BY ELECTRICAL TRADE FOR REMOTE CABLE PULL (HEIGHT VARIES PER LOCAL CODES)
(FE)	WIRING IN CONDUIT BY ELECTRICAL TRADE BETWEEN MICROSWITCH AND FIRE TERMINAL BLOCK IN UDS
(FF)	IF ELECTRIC GAS SOLENOID SHUT OFF VALVE IS REQUIRED, WIRING IN CONDUIT BY ELECTRICAL TRADE BETWEEN MOMENTARY POWER INTERRUPTION DEVICE, RESET RELAY AND GAS SOLENOID VALVE



**NOTE:**  
REFER TO SHEET QF105 FOR  
ELECTRICAL UTILITY  
LOAD SCHEDULE

VENTILATOR NOTES	
(VA)	WIRING IN CONDUIT BY ELECTRICAL TRADE BETWEEN VENTILATOR CONTROL AND MICRO SWITCH IN FIRE SUPPRESSION SYSTEM
(VB)	WIRING IN CONDUIT BY ELECTRICAL TRADE BETWEEN VENTILATOR CONTROL (FAN SWITCH, PANEL OR VARIABLE SPEED FAN CONTROL) AND EXHAUST/SUPPLY FAN MAGNETIC STARTER/MOTOR
(VC)	WIRING IN CONDUIT BY ELECTRICAL TRADE BETWEEN VENTILATOR CONTROL AND REMOTE DETERGENT PUMP AND FLOW SWITCH
(VD)	WIRING IN CONDUIT BY ELECTRICAL TRADE BETWEEN VENTILATOR CONTROL (FAN SWITCH, PANEL OR VARIABLE SPEED FAN CONTROL) AND JB ON TOP OF VENTILATOR FOR DAMPER CONTROL(S), AUTOSTART THERMOSTATS, UV
(VE)	WIRING IN CONDUIT BY ELECTRICAL TRADE BETWEEN VENTILATOR CONTROL AND JB ON TOP OF VENTILATOR FOR LIGHTS AND/OR FAN
(VF)	WIRING IN CONDUIT BY ELECTRICAL TRADE BETWEEN WALL SWITCH AND JB ON TOP OF VENTILATOR FOR LIGHTS AND/OR FAN
(VG)	WIRING IN CONDUIT BY ELECTRICAL TRADE BETWEEN VENTILATOR CONTROL AND SOLENOID AT PLUMBING ASSEMBLY ABOVE VENTILATOR
(VH)	WIRING IN CONDUIT BY ELECTRICAL TRADE BETWEEN VENTILATOR CONTROL AND VARIABLE SPEED FAN CONTROL
(VI)	WIRING IN CONDUIT BY ELECTRICAL TRADE BETWEEN VENTILATOR CONTROL AND BUILDING MANAGEMENT SYSTEM (AND DEMAND VENTILATION UNIT)

**NOTE: THIS DRAWING IS FOR INFORMATION ONLY.**

GENERAL CONTRACTOR SHALL COORDINATE WITH THE KITCHEN EQUIPMENT SUB-CONTRACTOR AND RELATED MECHANICAL, ELECTRICAL AND PLUMBING SUB-CONTRACTORS TO ESTABLISH FINAL SPOT CONNECTIONS LOCATIONS AND CONFIGURATIONS AS REQUIRED. THIS DRAWING SHALL NOT BE USED TO LOCATE ANY UTILITY CONNECTIONS IN THE FIELD OR TO LOCATE ANY ROUGH-IN, PENETRATION, OR OTHER REQUIREMENTS.

CINI • LITTLE INTERNATIONAL, INC.

**Cini-Little**  
CINI-LITTLE INTERNATIONAL, INC.  
3405 N.W. 9th AVENUE, SUITE 1202  
FT. LAUDERDALE, FL 33309-5943 USA  
954-846-9600 OFFICE  
954-564-1065 FAX  
www.cini-little.com

OFFICE LOCATIONS  
CHICAGO CLEVELAND FT. LAUDERDALE LOS ANGELES NEW YORK SAN FRANCISCO TORONTO WASHINGTON LONDON STONEY TOKYO

PROJECT NAME  
**NORTH HOMELESS ASSISTANCE CENTER**  
FT. LAUDERDALE, FL

SHEET TITLE  
**FOODSERVICE EQUIPMENT ELECTRICAL SPOT CONNECTION PLAN**

PROJECT MGR/DRN:	SW/CAD
SCALE:	1/4" = 1'-0"
PROJECT NO:	16-0046-0
ISSUE DATE:	/ /
REFERENCE NORTH	SHEET NUMBER
	<b>QF103</b>

OCT 10, 2016 3:03 PM USER19  
Z:\A-YR-2015\15012 NORTH HOMELESS ASSISTANCE CENTER KITCHEN RENOV\SA INCOMING\CINI-LITTLE\2016.08.15 FINAL\BROWARD\_QF101.DWG