

GENERAL NOTES:

- STRUCTURAL DRAWINGS SHALL BE USED IN CONJUNCTION WITH ARCHITECTURAL, MECHANICAL, ELECTRICAL, PLUMBING, AND CIVIL DRAWINGS. CONSULT THESE DRAWINGS FOR DEPRESSIONS, OPENINGS, FLOOR FINISHES, AND OTHER DETAILS NOT SHOWN ON STRUCTURAL DRAWINGS. IF A CONFLICT EXISTS, CONTACT THE ENGINEER BEFORE PROCEEDING.
- DIMENSIONS AND CONDITIONS MUST BE VERIFIED IN THE FIELD. DO NOT USE SCALED DIMENSIONS; USE WRITTEN DIMENSIONS. ANY DISCREPANCIES SHALL BE BROUGHT TO THE ATTENTION OF THE ENGINEER BEFORE PROCEEDING WITH THE AFFECTED PART OF THE WORK.
- THE STRUCTURE IS DESIGNED TO BE SELF SUPPORTING AND STABLE AFTER THE BUILDING IS COMPLETE. IT IS THE CONTRACTOR'S RESPONSIBILITY TO DETERMINE ERECTION PROCEDURES AND SEQUENCE TO ENSURE SAFETY OF THE BUILDING AND ITS COMPONENTS DURING ERECTION. THIS INCLUDES THE ADDITION OF NECESSARY SHORING, SHEETING, TEMPORARY BRACING, GUYS, OR TIEDOWNS.
- WORK SHOWN AS NEW UNLESS NOTED AS EXISTING, (E).
- DETAILS LABELED "TYPICAL" APPLY TO ALL SITUATIONS THAT ARE THE SAME OR SIMILAR TO THOSE SPECIFICALLY CALLED OUT WHETHER EVERY LOCATION IS SPECIFIED OR NOT. CONTACT THE ENGINEER WITH ANY QUESTIONS OF APPLICABILITY.

DESIGN CRITERIA:

- TO THE BEST OF OUR KNOWLEDGE, THE STRUCTURAL DRAWINGS COMPLY WITH THE APPLICABLE REQUIREMENTS OF THE 2010 EDITION OF THE FLORIDA BUILDING CODE WITH ITS APPLICABLE SUPPLEMENTS.
- CONSTRUCTION IS TO COMPLY WITH THE GOVERNING BUILDING CODE AND ALL FEDERAL, STATE, AND LOCAL BUILDING REQUIREMENTS.
- SUPERIMPOSED DESIGN LOADS:

OCCUPANCY	DEAD LOAD	LIVE LOAD*
ROOF TOP CHORD	15 PSF	30 PSF
ROOF BOTTOM CHORD	20 PSF	-
EXHAUST FAN	210 LBS	-
SUPPLY FAN	412 LBS	-
HOODS	554 LBS	-

* LIVE LOAD REDUCTION HAS BEEN APPLIED WHERE ALLOWED BY CODE.

WIND LOADS	
GOVERNING CODE	ASCE 7-10
DESIGN WIND SPEED	V=170 MPH
RISK CATEGORY	II
EXPOSURE	C
ENCLOSURE CLASSIFICATION	ENCLOSED

- ALL EXTERIOR COMPONENTS OF THE BUILDING SHALL BE RATED FOR THE DESIGN WIND PRESSURES LISTED ON THE DRAWINGS BASED ON THE EFFECTIVE AREA OF THE COMPONENT. LINEAR INTERPOLATION IS PERMITTED FOR COMPONENTS WITH AREAS NOT LISTED ON THE DRAWINGS. DESIGN PRESSURES FOR 10 sf SHALL BE USED FOR ALL COMPONENTS WITH LESS THAN 10 sf EFFECTIVE AREA AND 100 SF DESIGN PRESSURE SHALL BE USED FOR ALL COMPONENTS WITH GREATER THAN 100 sf EFFECTIVE AREA.

STRUCTURAL STEEL:

- FABRICATE AND ERECT STRUCTURAL STEEL IN CONFORMANCE WITH AISC'S "CODE OF STANDARD PRACTICE FOR STEEL BUILDINGS AND BRIDGES," AISC 360, AND ALL OSHA REQUIREMENTS.
- ROLLED SHAPES (M, S, C, MC, AND L), PLATES AND BARS SHALL CONFORM TO ASTM A36, Fy = 36 ksi.
- STEEL SHALL RECEIVE ONE SHOP COAT AND ONE FIELD TOUCH-UP COAT OF APPROVED PAINT, EXCEPT WHERE GALVANIZING IS INDICATED ON THE DRAWINGS OR WHERE FIRE-PROOFING COATING IS TO BE APPLIED AFTER ERECTION.
- SHOP CONNECTIONS TO BE WELDED UTILIZING E70XX ELECTRODES AND CONFORMING TO AWS D1.1.
- TYPICAL BOLTED CONNECTIONS SHALL CONSIST OF 1/2 INCH DIAMETER ASTM A307 BOLTS. TIGHTEN BOLTS TO THE SNUG TIGHT CONDITION, U.O.N.
- DO NOT REUSE OR RETIGHTEN BOLTS THAT HAVE BEEN FULLY TIGHTENED.
- PROVIDE HARDENED WASHERS CONFORMING TO ASTM F436 AND PLACED UNDER THE FASTENER BEING TURNED.
- STORE FASTENERS IN SEALED CONTAINERS UNTIL READY FOR USE. STORE SEALED CONTAINERS AWAY FROM DIRT AND MOISTURE. DO NOT USE FASTENERS FROM OPEN CONTAINERS OR THAT HAVE ACCUMULATED RUST OR DIRT.
- WELDING SHALL BE DONE BY WELDERS WITH CURRENT CERTIFICATION USING ASTM E70 SERIES ELECTRODES FOR SHOP WELDING A36 STEEL, AND E70 SERIES LOW HYDROGEN ELECTRODES FOR ALL WELDING OF HIGH STRENGTH STEELS AND FOR FIELD WELDING.
- CUT, DRILL, OR PUNCH HOLES PERPENDICULAR TO METAL SURFACES. REAM HOLES THAT MUST BE ENLARGED. DO NOT ENLARGE UNFAIR HOLES BY BURNING OR USING DRIFT PINS.

WOOD:

- STRUCTURAL WOOD COMPONENTS (BEAMS, JOISTS, RAFTERS, ETC.) SHALL BE VISUALLY GRADED NO. 2 SOUTHERN PINE, UNLESS NOTED OTHERWISE. PROVIDE HIGHER GRADE LUMBER WHERE INDICATED ON THE DRAWINGS.
- WOOD IN CONTACT WITH CONCRETE OR MASONRY, AND AT OTHER LOCATIONS AS SHOWN ON STRUCTURAL DRAWINGS, SHALL BE PROTECTED OR PRESSURE TREATED IN ACCORDANCE WITH AMERICAN WOOD PROTECTION ASSOCIATION STANDARDS. MEMBER SIZES SHOWN ARE NOMINAL UNLESS NOTED OTHERWISE.

PLYWOOD:

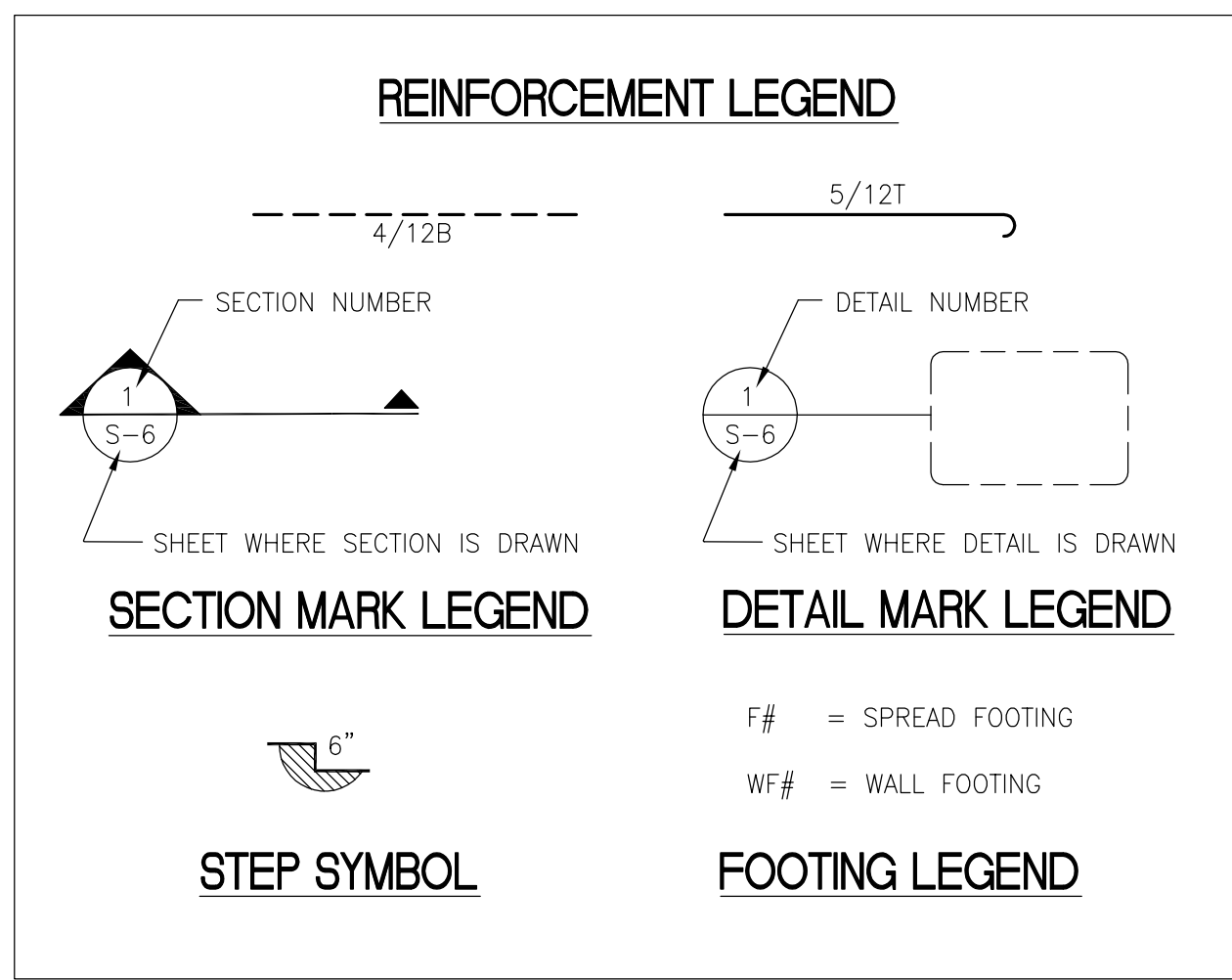
- PLYWOOD USED FOR ROOF SHEATHING SHALL BE MINIMUM 19/32" THICK (NOMINAL 5/8") EXTERIOR GRADE (CDX) PLYWOOD WITH A SPAN RATING OF 32/16. ROOF SHEATHING SHALL BE NAILED TO SUPPORT FRAMING USING 8d RING SHANK COMMON NAILS AT 6" ON CENTERS AT INTERMEDIATE SUPPORTS AND AT 4" ON CENTERS AT PANEL EDGES.
- WOOD STRUCTURAL PANELS USED FOR WALL SHEATHING ARE DESIGNED AS DIAPHRAGMS AND SHALL COMPLY WITH APPLICABLE PROVISIONS OF CHAPTER 23 OF THE FLORIDA BUILDING CODE. UNLESS SHOWN OTHERWISE, SPAN RATED PANELS SHALL BE FASTENED TO NOMINAL 2x SOUTHERN PINE FRAMING SPACED UP TO 16" O.C. IN ACCORDANCE WITH THE FOLLOWING:

PANELS UP TO 5/8" THICK: 10d NAILS AT 4" O.C. EDGE, 12" O.C. ELSEWHERE.

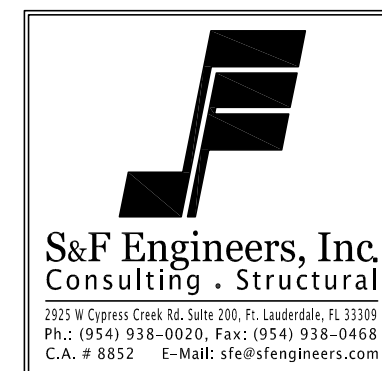
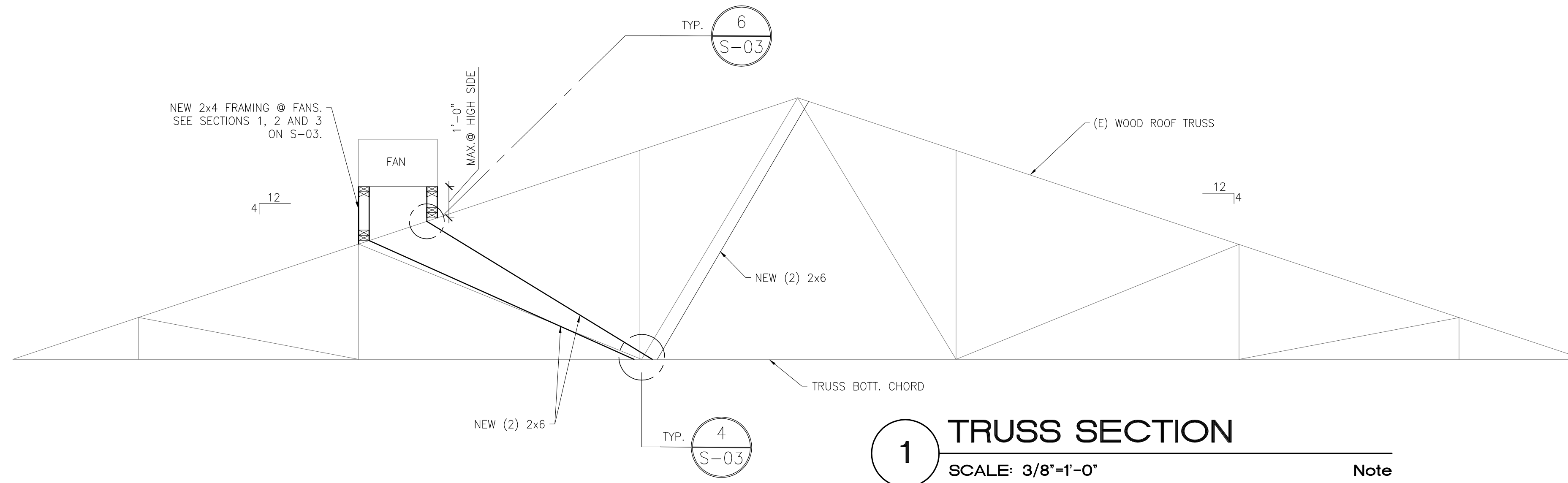
- ALL PLYWOOD DECKING SHALL BE INSTALLED IN MINIMUM TWO SPAN CONDITIONS WITH OUTER LAYER WOOD GRAIN PERPENDICULAR TO THE SUPPORT FRAMING AND WITH JOINTS STAGGERED.

WOOD FRAMING CONNECTORS:

- CONNECTORS SHALL BE ZMAXX COATED CONNECTOR MODEL NUMBERS SHOWN ARE CONNECTORS AS MANUFACTURED BY SIMPSON Strong-Tie Co., 1450 DOOLITTLE DR., P.O. BOX 1568, SAN LEANDRO, CA 94577. SUBSTITUTIONS ARE ACCEPTABLE WITH THE APPROVAL OF THE STRUCTURAL ENGINEER. UNLESS SHOWN OTHERWISE, INSTALL SIZE AND NUMBER OF FASTENERS SHOWN IN LATEST SIMPSON CATALOG.



ABBREVIATIONS			
AB	- ANCHOR BOLT	LB	- POUND
ALT	- ALTERNATE	LP	- LOW POINT
APPR	- APPROXIMATELY	LLV	- LONG LEG VERTICAL
ARCH	- ARCHITECTURAL	LLH	- LONG LEG HORIZONTAL
B	- BOTTOM	LONG	- LONG LONGITUDINAL
BLDG	- BUILDING	MFR	- MANUFACTURER
BM	- BEAM	MAS	- MASONRY
BOTT	- BOTTOM	MO	- MASONRY OPENING
BRG	- BEARING	MATL	- MATERIAL
C/C	- CENTER TO CENTER	MAX	- MAXIMUM
CH	- CHANNEL	MECH	- MECHANICAL
CIP	- CAST IN PLACE	MEP	- MECHANICAL/ELECTRICAL/PLUMBING
CJ	- CONTROL JOINT	MTL	- METAL
CL	- CENTERLINE	MIN	- MINIMUM
CLR	- CLEAR	MISC	- MISCELLANEOUS
CMU	- CONCRETE MASONRY UNIT	NS	- NEAR SIDE
COL	- COLUMN	NIC	- NOT IN CONTRACT
CONC	- CONCRETE	NTS	- NOT TO SCALE
COND	- CONDITION	O/C	- ON CENTER
CONFIG	- CONFIGURATION	OH	- OPPOSITE HAND
CONT	- CONTINUOUS	OPNG	- OPENING
CONTR	- CONTRACTOR	PART	- PARTITION
CTR	- CENTER	PL	- PLATE
DBL	- DOUBLE	PLF	- POUNDS PER LINEAR FOOT
DET	- DETAIL	PSF	- POUNDS PER SQUARE FOOT
DIA	- DIAMETER	PSI	- POUNDS PER INCH
DIM	- DIMENSION	PT	- POST TENSION/PRESSURE TREATED
DN	- DOWN	R	- RISER
DO	- DITTO	REINF	- REINFORCED
DR	- DOOR	REM	- REMAINDER
DWG	- DRAWING	REQ'D	- REQUIRED
(E)	- EXISTING	REV	- REVISED/REVISION
EA	- EACH	RM	- ROOM
EF	- EACH FACE	RO	- ROUGH OPENING
EJ	- EXPANSION JOINT	ROMT	- REQUIREMENT
EL	- ELEVATION	S.A.D.	- SEE ARCHITECTURAL DRAWINGS
ELECT	- ELECTRICAL	SCHED	- SCHEDULE
ELEV	- ELEVATOR	SECT	- SECTION
EQ	- EQUAL	SIM	- SIMILAR
EW	- EACH WAY	SL	- SLOPE
EXP	- EXPANSION	S.M.S.	- SHEET METAL SCREW
FIN	- FINISH	S.M.D.	- SEE MECHANICAL DRAWINGS
FLR	- FLOOR	SOG	- SLAB ON GRADE
FND	- FOUNDATION	SO	- SQUARE
FOM	- FACE OF MASONRY	SP	- SPIRAL
FRMG	- FRAMING	SS	- STAINLESS STEEL
FS	- FAR SIDE	STD	- STANDARD
FT	- FOOT	SW	- SHEARWALL/SHORT WAY
FTG	- FOOTING	STL	- STEEL
GA	- GAGE	STRUCT	- STRUCTURAL
GALV	- GALVANIZED	TB	- TIE BEAM
GT	- GIRDER TRUSS	TC	- TIE COLUMN
HC	- HOLLOW CORE	T/O	- THRU OUT
HK	- HOOK	TO	- TOP OF
HDG	- HOT DIPPED GALVANIZED	TOC	- TOP OF CONCRETE
HJ	- HIP JACK TRUSS	T/	- TOP
HORIZ	- HORIZONTAL	TEMP	- TEMPERATURE
HP	- HIGH POINT	TOS	- TOP OF STEEL
HS	- HEADED STUD	TRANS	- TRANSVERSE
IJ	- ISOLATION JOINT	TR	- TREAD
INFO	- INFORMATION	TYP	- TYPICAL
INT	- INTERIOR	UNO	- UNLESS NOTED OTHERWISE
JST	- JOIST	VERT	- VERTICAL
JAT	- JACK TRUSS	VIF	- VERIFY IN FIELD
JT	- JOINT	WA	- WEDGE ANCHOR
KJ	- CONSTRUCTION JOINT	WD	- WOOD
L	- ANGLE	WWF	- WELDED WIRE FABRIC
LG	- LONG		



REVISIONS

NO.	DESCRIPTION	DATE	BY

STAMP: NOT FOR CONSTRUCTION ISSUED FOR ADDENDUM NO.1
DATE: 12/02/2016

STAMP: SIVANATHAN, SRITHARAN, P.E. - FLORIDA LICENSE #55133

PROJECT: NORTH HOMELESS ASSISTANCE CENTER KITCHEN RENOVATION
1700 BLOUNT ROAD, POMPANO BEACH, FL 33069

FILE NO.: 16128
DATE: 12-02-16
DRAWN BY: BL
CHECKED BY: SS/CS

STRUCTURAL NOTES AND SECTIONS

SHEET TITLE: STRUCTURAL NOTES AND SECTIONS
SHEET NUMBER: S-01

THE DOCUMENT, THE SEALS, AND THE STAMPS ARE THE PROPERTY OF S&F ENGINEERS, INC. AND DAWSON LLC AND SHALL NOT BE REPRODUCED, COPIED, OR TRANSMITTED IN ANY FORM OR BY ANY OTHER MEANS OR FOR ANY PURPOSE WITHOUT THE WRITTEN PERMISSION OF S&F ENGINEERS, INC. AND DAWSON LLC. ANY SUCH UNAUTHORIZED REPRODUCTION SHALL BE THE RESPONSIBILITY AND LIABILITY OF THE USER.
© 2015 by Russell and Dawson LLC

SINGER ARCHITECTS
A RUSSELL AND DAWSON COMPANY
915 Middle River Road, Suite 100
Fort Lauderdale, Florida 33304
Phone: (954) 333-3333
License: CO000808 • www.singerarchitect.com